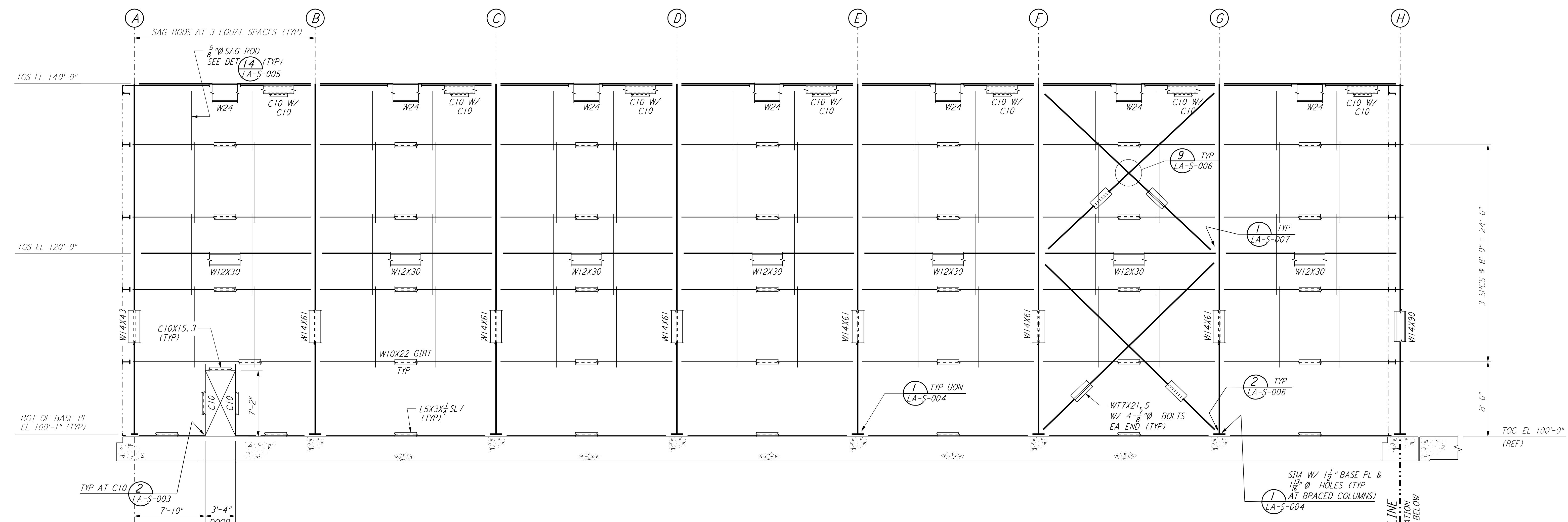
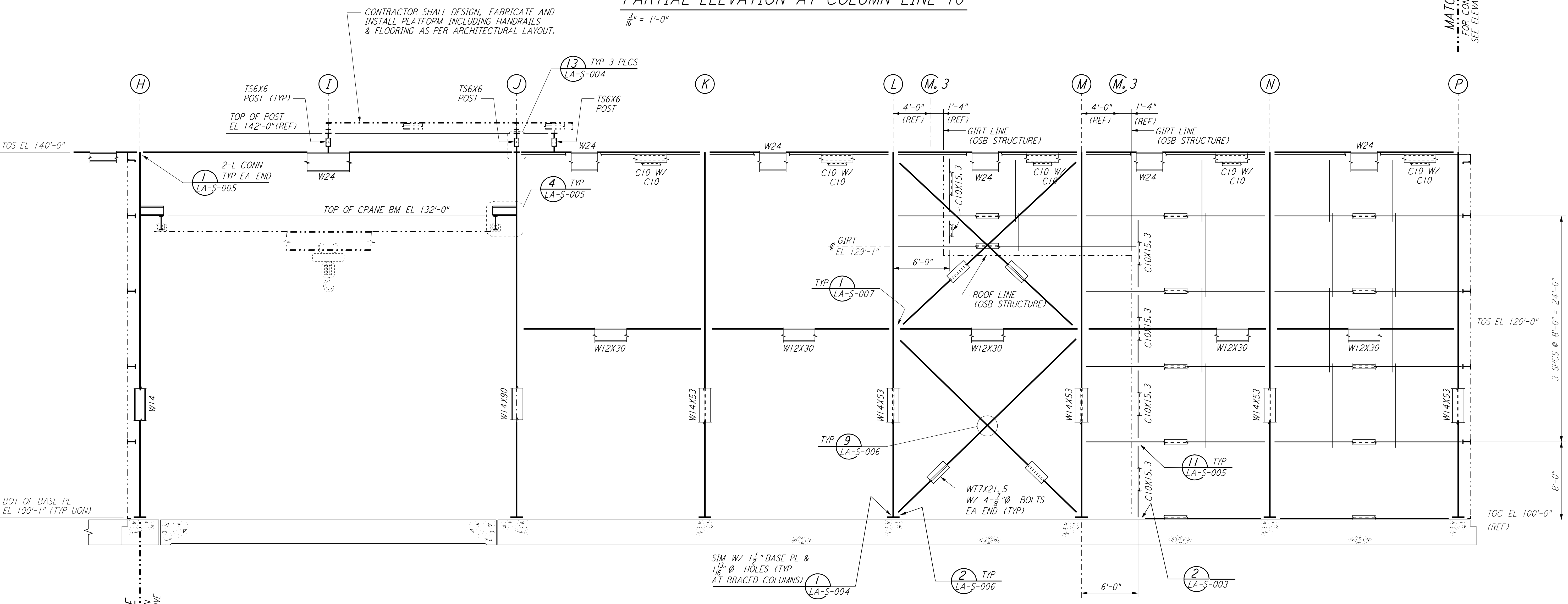


This document and the design it covers are the property of PARSONS. They are loaned only with the borrower's expressed written agreement that they will not be reproduced, copied, loaned, exhibited, or used in any other way, except by written consent from PARSONS to the borrower.

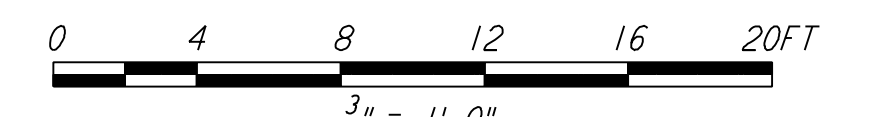


PARTIAL ELEVATION AT COLUMN LINE 10
 $\frac{3}{16}'' = 1'-0''$



PARTIAL ELEVATION AT COLUMN LINE 10
 $\frac{3}{16}'' = 1'-0''$

NOTE:
 1. FOR NOTES SEE DRAWING LA-S-107.



LIGO-D960926-01-O

NO.	DATE	BY	CHKD	ENGR	PROJ	DESCRIPTION
1	08-07-98	WA				ISSUED FOR AS-BUILT

ISSUED FOR CONSTRUCTION		
DRAWN	MCS	11-15-96
CHECKED	DDM	11-15-96
ENGINEER	BP	11-15-96
PROJ	TDM	11-15-96

AS-BUILT DRAWINGS



100 WEST WALNUT STREET
 PASADENA, CALIFORNIA



CALIFORNIA INSTITUTE OF TECHNOLOGY
 MASSACHUSETTS INSTITUTE OF TECHNOLOGY

LASER INTERFEROMETER GRAVITATIONAL-WAVE OBSERVATORY SITE NO. 2 - LIVINGSTON, LOUISIANA			
TITLE	SCALE	CONTRACT NUMBER	PROJECT NUMBER
STRUCTURAL CORNER STATION LVEA FRAMING ELEVATIONS SHEET 4	AS NOTED	PP150969	8094
	SHEET NUMBER	REVISIONS	
	LA-S-110		