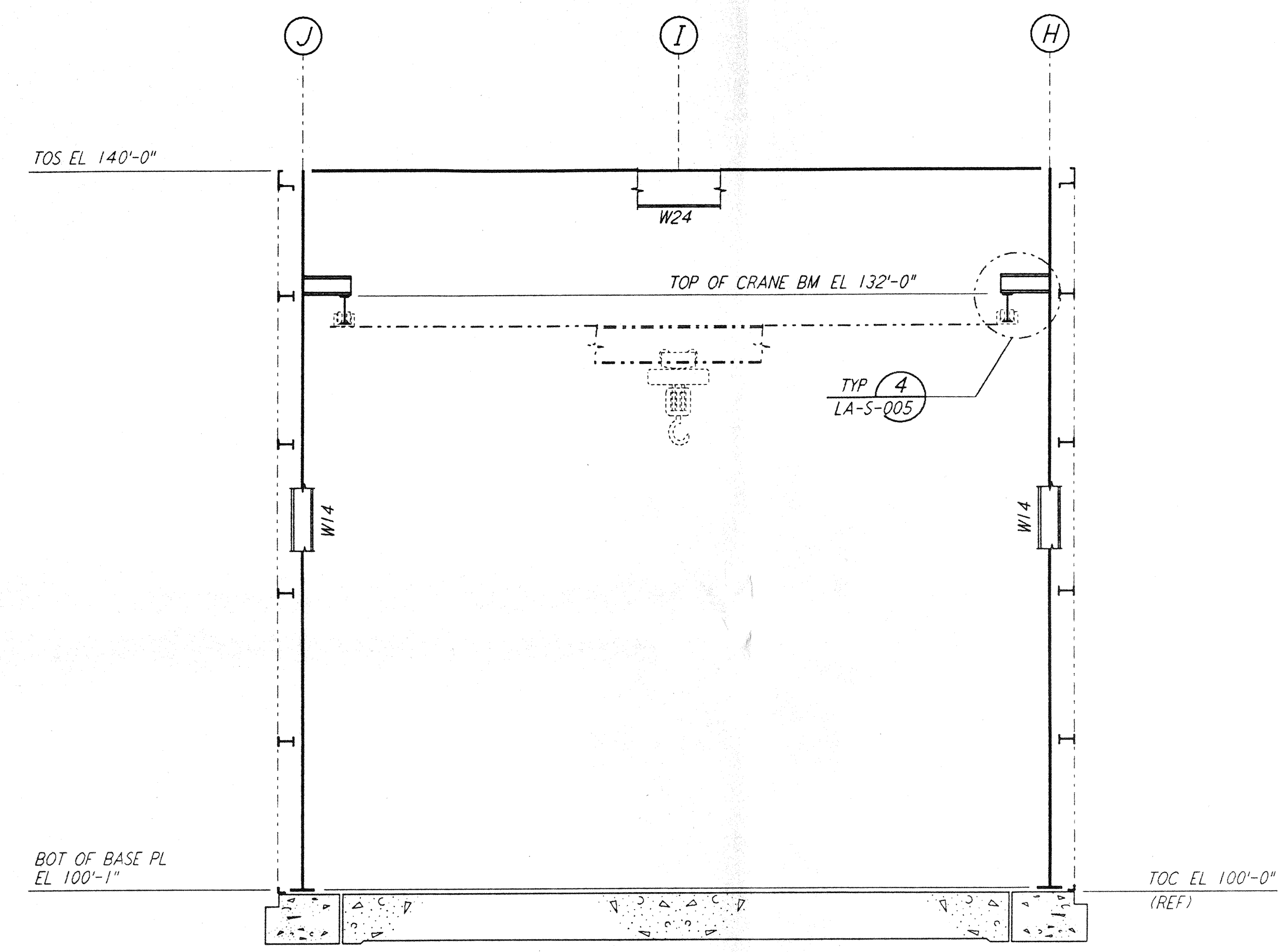
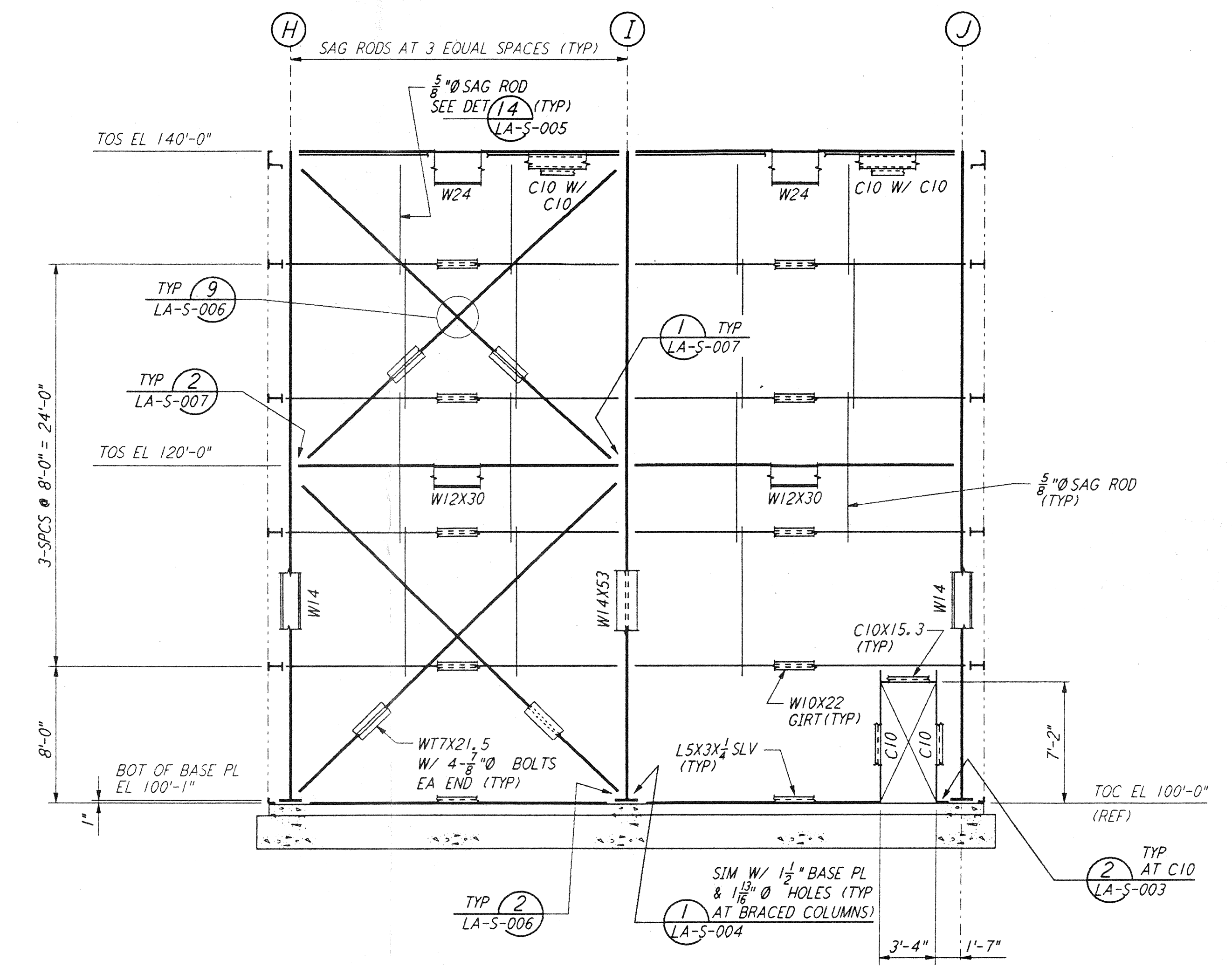


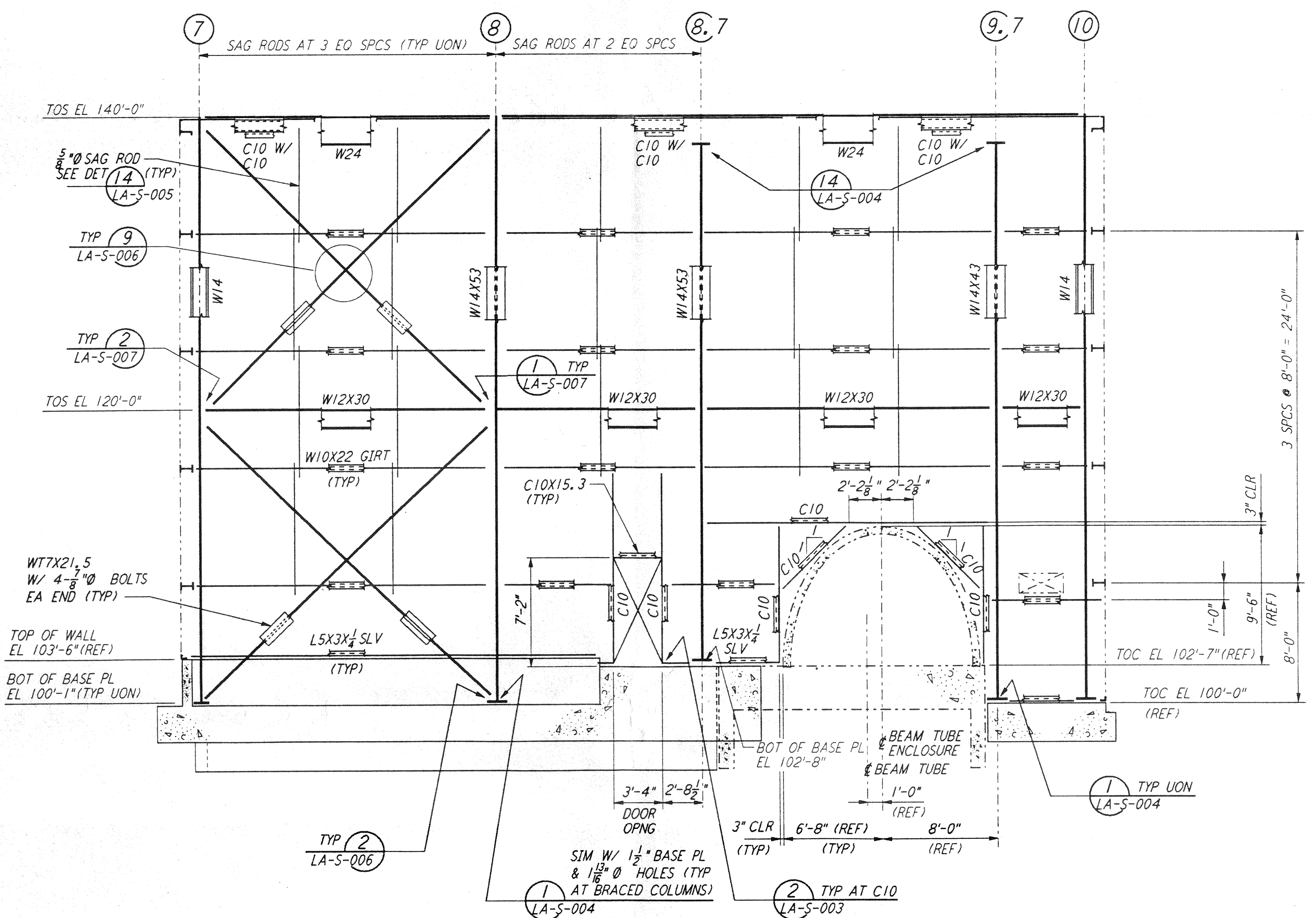
This document and the design it covers are the property of PARSONS. They are loaned only with the borrower's expressed written agreement that they will not be reproduced, copied, loaned, exhibited, or used in any other way, except by written consent from PARSONS to the borrower.



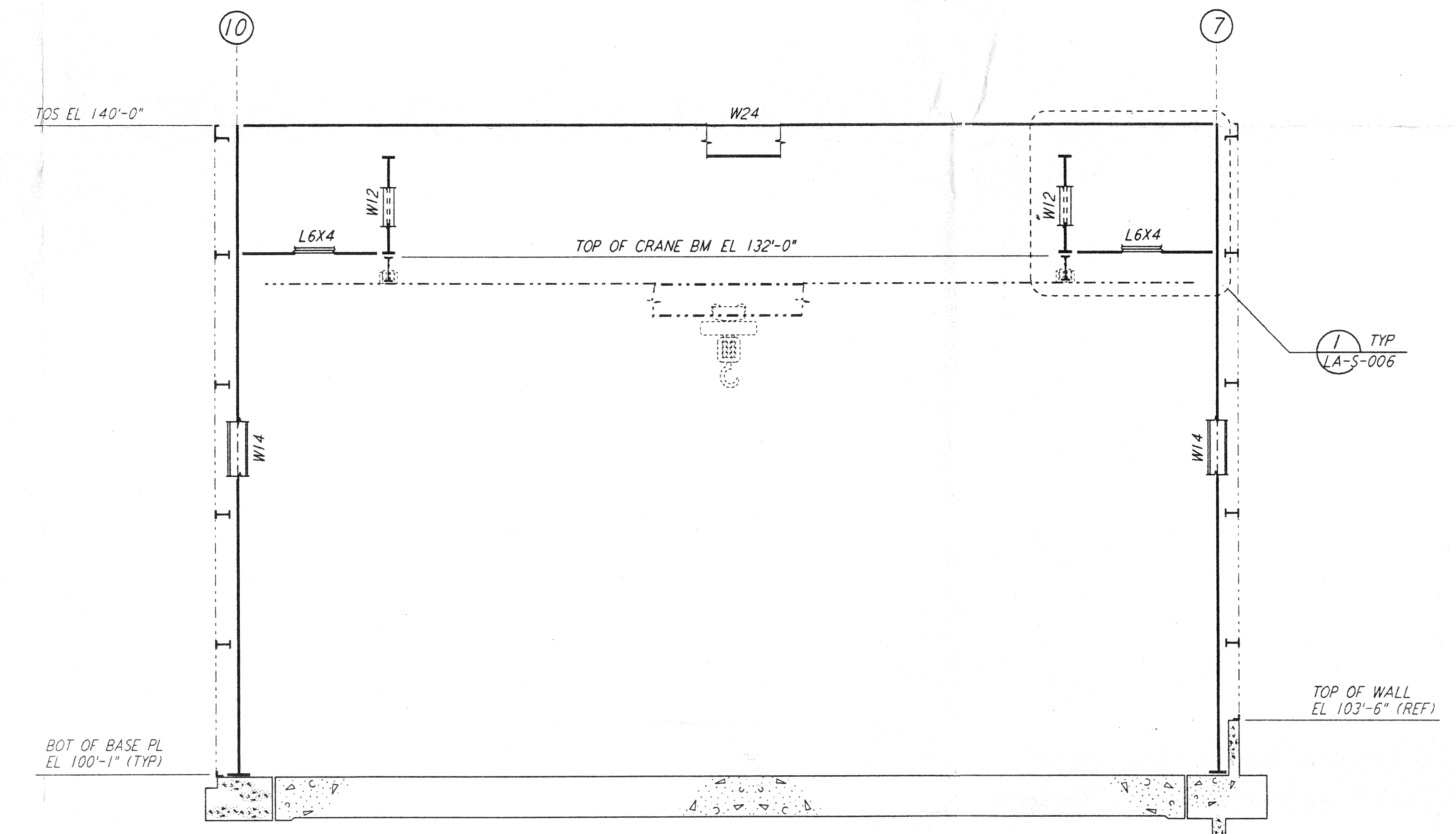
ELEVATION AT COLUMN LINES 11, 12, 13, 14 & 15
 $\frac{3}{16}'' = 1'-0''$



ELEVATION AT COLUMN LINE 16
 $\frac{3}{16}'' = 1'-0''$

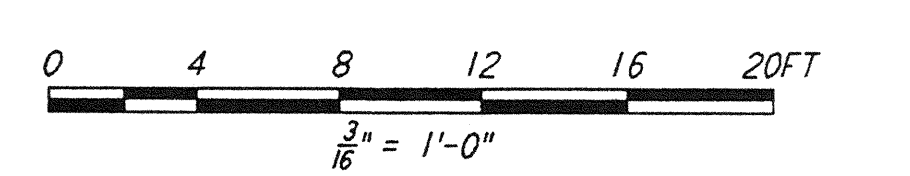


ELEVATION AT COLUMN LINE A
 $\frac{3}{16}'' = 1'-0''$



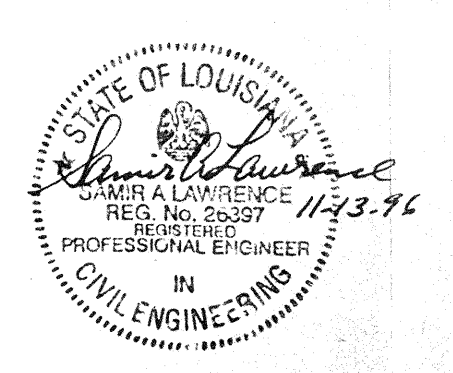
ELEVATION AT COLUMN LINES B, C, D, E & F
 $\frac{3}{16}'' = 1'-0''$

NOTE:
 1. FOR NOTES SEE DRAWING LA-S-107.



NO.	DATE	BY	CHKD	ENGR	PROJ	DESCRIPTION

ISSUED FOR CONSTRUCTION	
DRAWN	MCS 11-15-96
CHECKED	11-15-96
ENGINEER	11-15-96
PROJ	11/15/96



PARSONS
 100 WEST WALNUT STREET
 PASADENA, CALIFORNIA

LIGO
 CALIFORNIA INSTITUTE OF TECHNOLOGY
 MASSACHUSETTS INSTITUTE OF TECHNOLOGY

LASER INTERFEROMETER
 GRAVITATIONAL-WAVE OBSERVATORY
 SITE NO. 2 - LIVINGSTON, LOUISIANA

TITLE	SCALE	CONTRACT NUMBER	PROJECT NUMBER
STRUCTURAL CORNER STATION LVEA FRAMING ELEVATIONS SHEET 5	AS NOTED	PP150969	8094
SHEET NUMBER		REVISIONS	
LA-S-111			