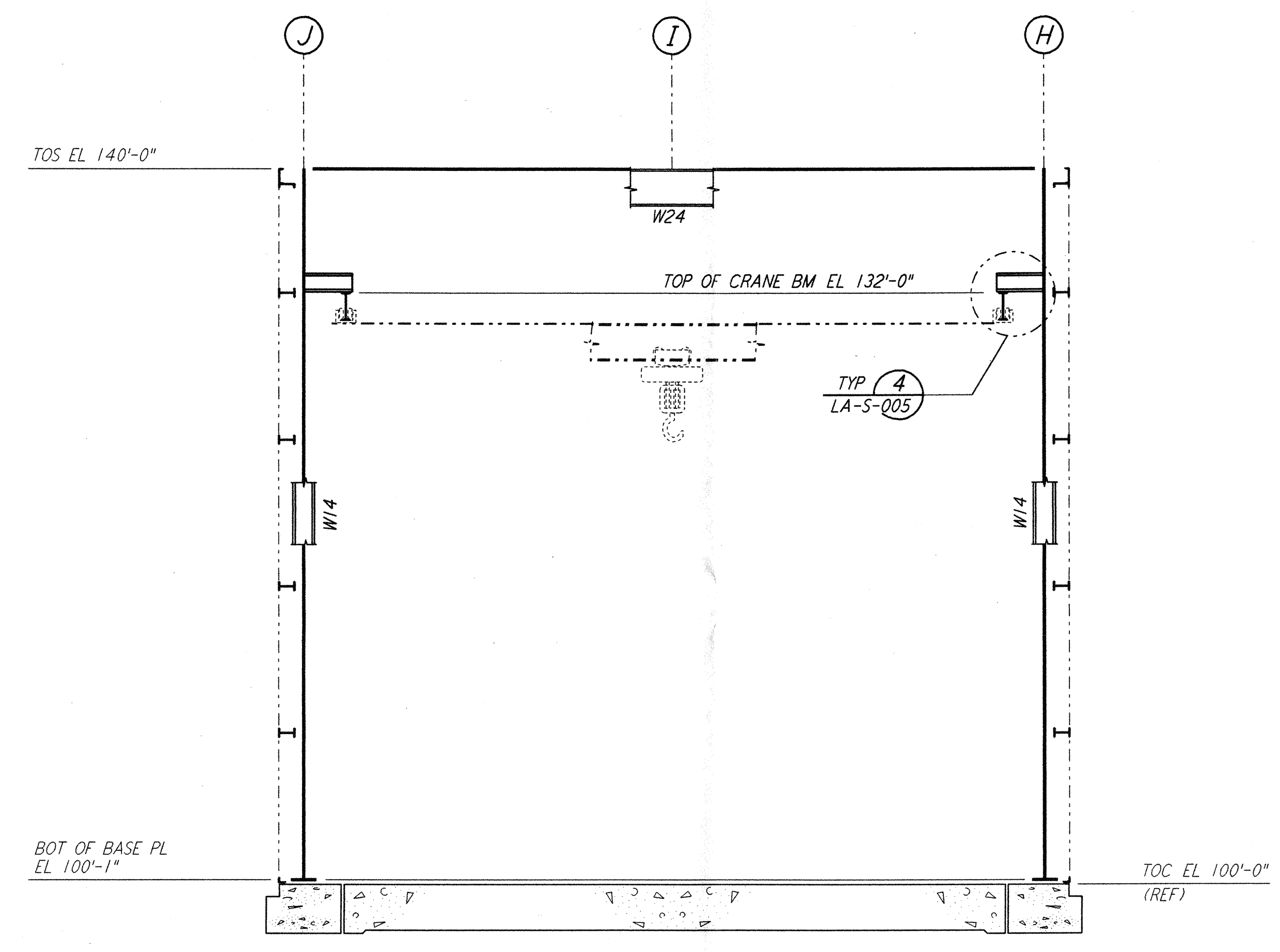
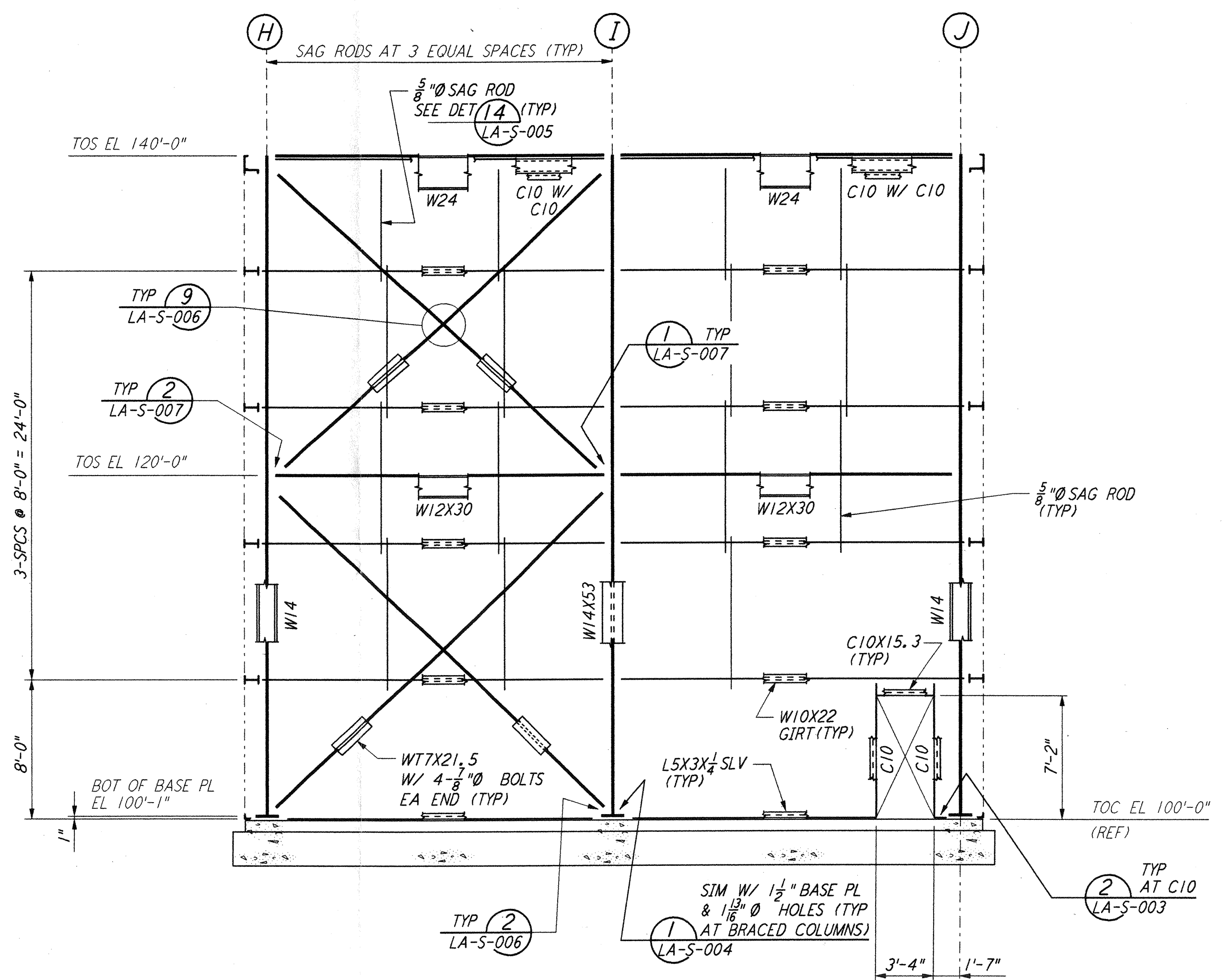


not be reproduced, copied, loaned, exhibited, or used in any other way, except by written consent from PARSONS to the borrower.

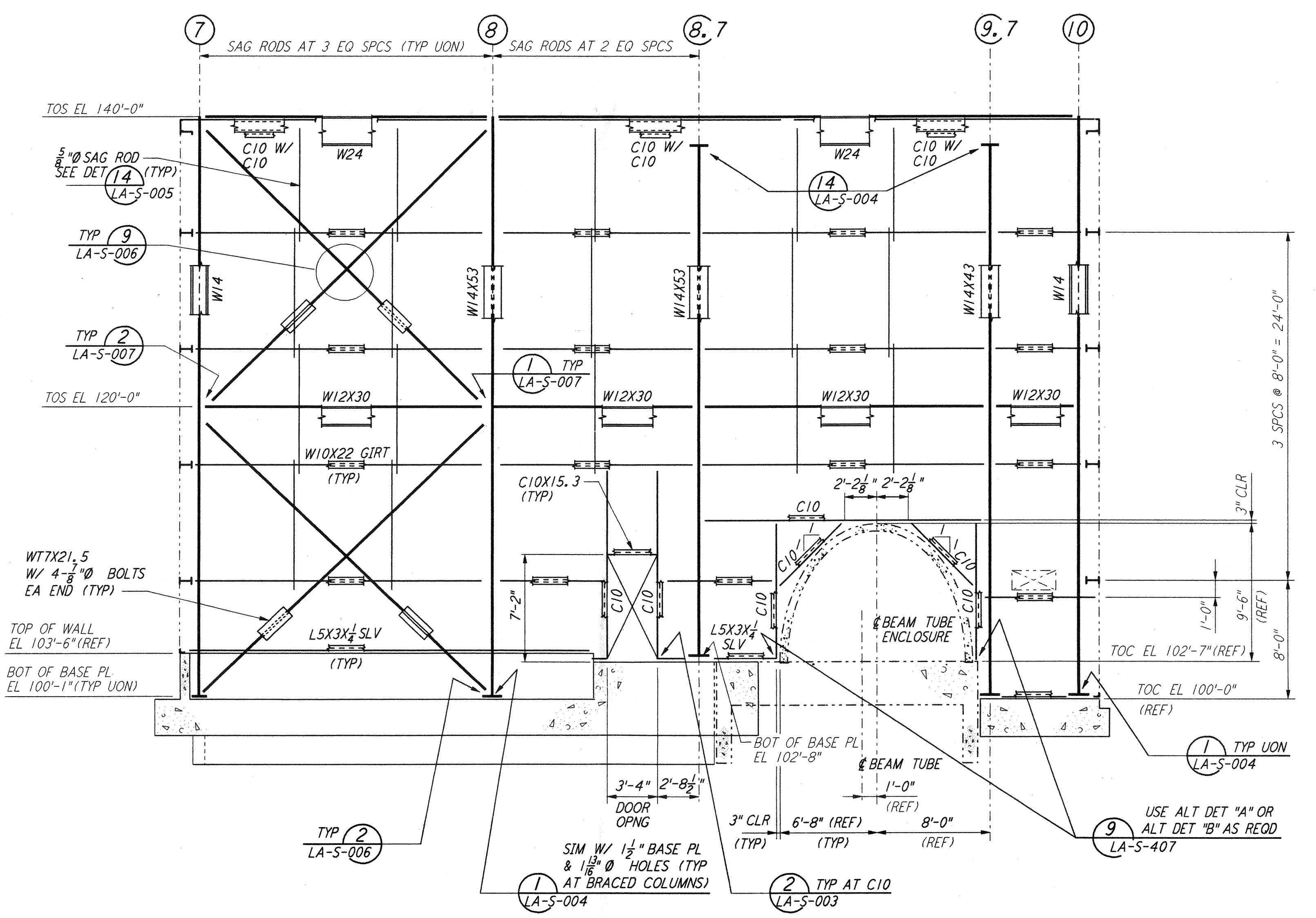
This document and the design it covers are the property of PARSONS. They are loaned only with the borrower's expressed written agreement that they will



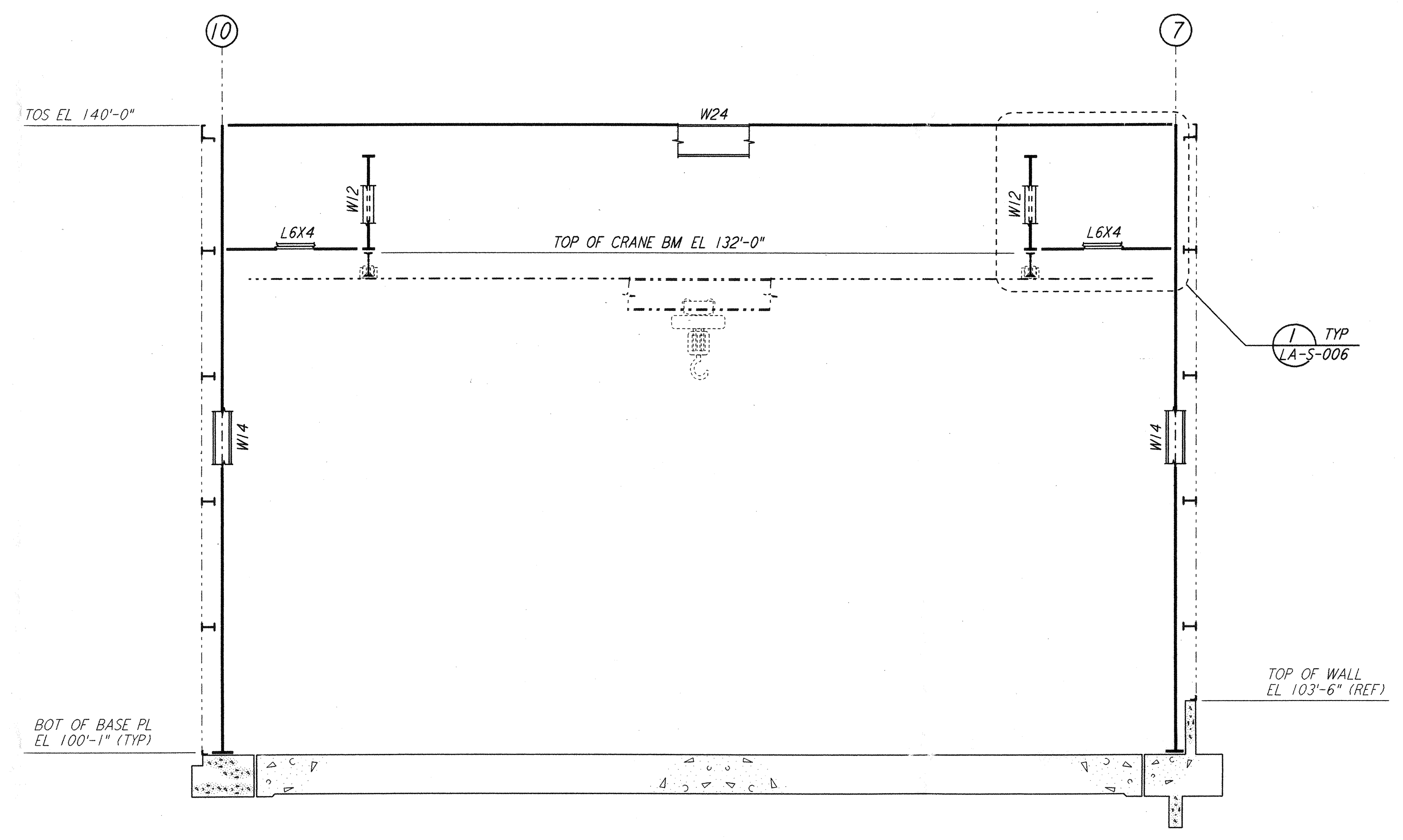
ELEVATION AT COLUMN LINES 11, 12, 13, 14 & 15
 $\frac{3}{16}'' = 1'-0''$



ELEVATION AT COLUMN LINE 16
 $\frac{3}{16}'' = 1'-0''$

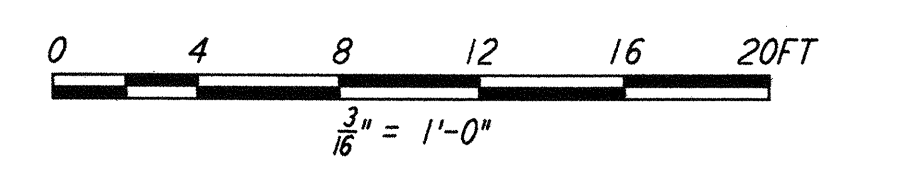


ELEVATION AT COLUMN LINE A
 $\frac{3}{16}'' = 1'-0''$



ELEVATION AT COLUMN LINES B, C, D, E & F
 $\frac{3}{16}'' = 1'-0''$

NOTE:
 1. FOR NOTES SEE DRAWING LA-S-107.



NO.	DATE	BY	CHKD	ENGR	PROJ	DESCRIPTION
2	08-07-98	WA	QAM	QAM	WWW	ISSUED FOR AS-BUILT
1	2-28-97	RM	AB	BP		ADDED DET REF AT ELEV LN A

ISSUED FOR CONSTRUCTION	MCS	11-15-96
DRAWN	DDM	11-15-96
CHECKED	BP	11-15-96
ENGINEER	TDM	11-15-96
PROJ		

AS-BUILT DRAWINGS



100 WEST WALNUT STREET
 PASADENA, CALIFORNIA



CALIFORNIA INSTITUTE OF TECHNOLOGY
 MASSACHUSETTS INSTITUTE OF TECHNOLOGY

LIGO-D960927-02-O

LASER INTERFEROMETER
 GRAVITATIONAL-WAVE OBSERVATORY
 SITE NO. 2 - LIVINGSTON, LOUISIANA

TITLE	SCALE	CONTRACT NUMBER	PROJECT NUMBER
STRUCTURAL CORNER STATION LVEA FRAMING ELEVATIONS SHEET 5	AS NOTED	PP150969	8094
SHEET NUMBER		REVISIONS	
LA-S-111			