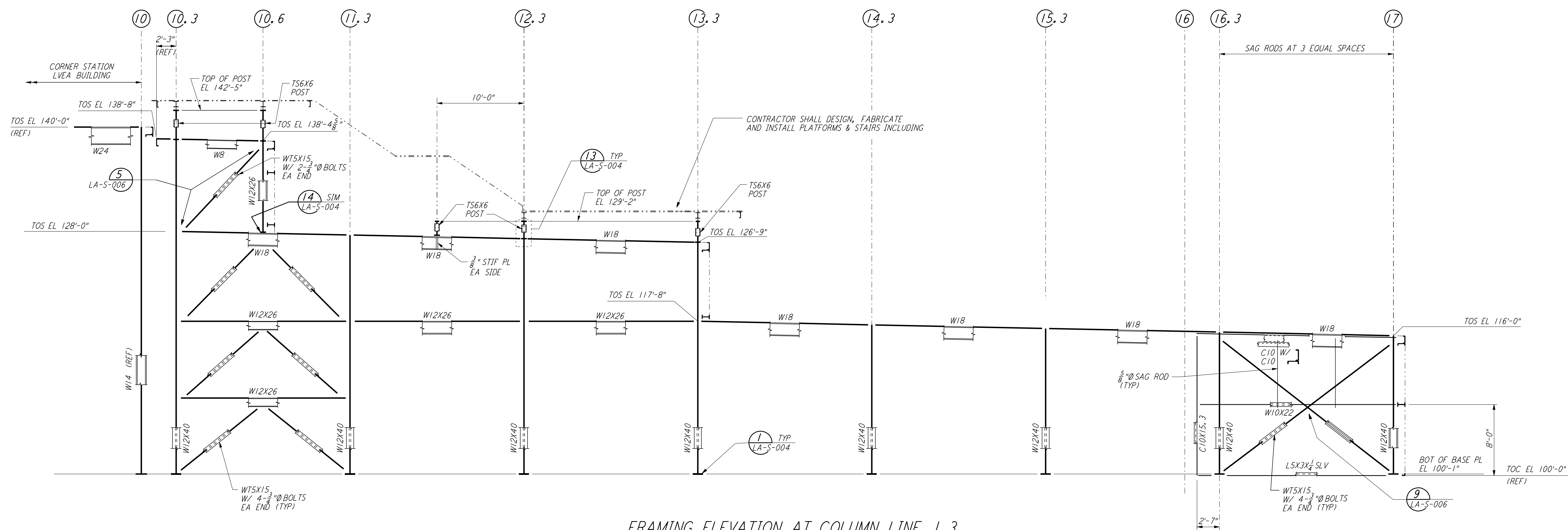
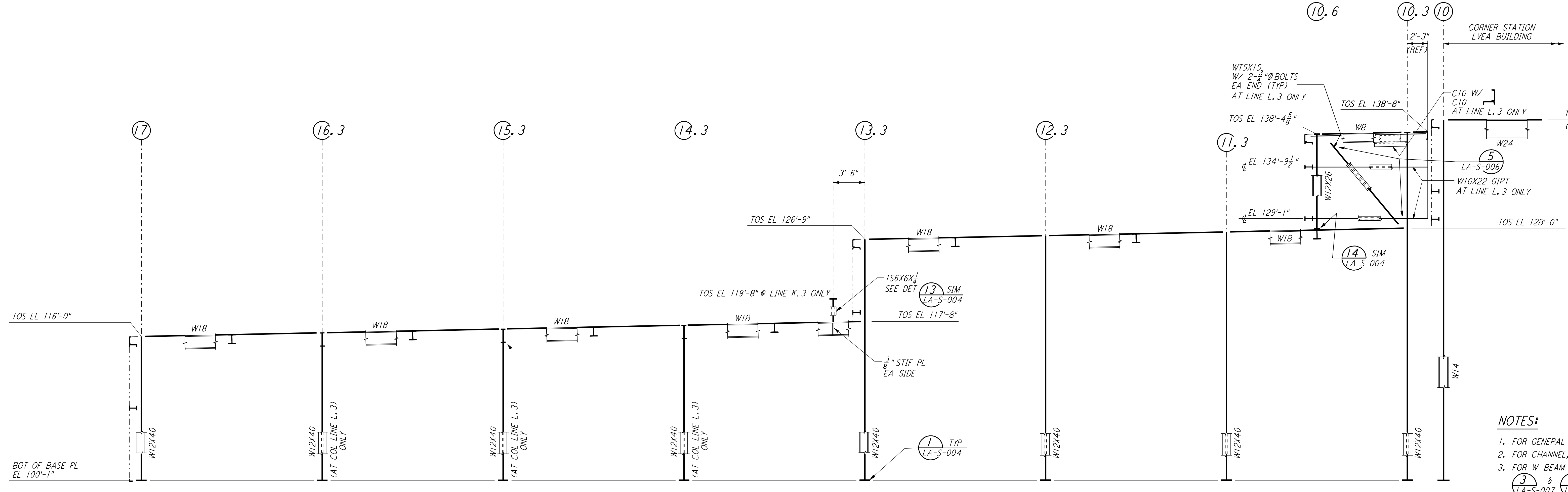


This document and the design it covers are the property of PARSONS. They are loaned only with the borrower's expressed written agreement that they will not be reproduced, copied, loaned, exhibited, or used in any other way, except by written consent from PARSONS to the borrower.

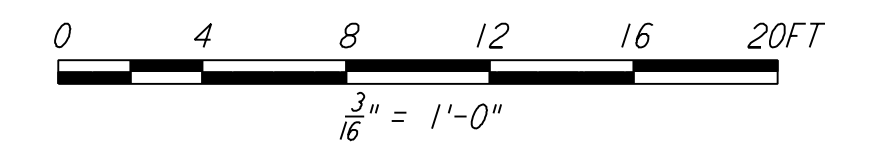


FRAMING ELEVATION AT COLUMN LINE J.3
 $\frac{3}{16}'' = 1'-0''$



FRAMING ELEVATION AT COLUMN LINE K.3 & L.3
 $\frac{3}{16}'' = 1'-0''$

- NOTES:**
- FOR GENERAL NOTES, ABBREVIATIONS AND SYMBOLS SEE DRAWING LA-S-001.
 - FOR CHANNEL, GIRTS AND EAVE STRUT CONNECTION DETAILS SEE DRAWING LA-S-005.
 - FOR W BEAM TO COLUMN WEB/FLANGE CONNECTIONS, SEE DETAILS 3 & 4 TYPICAL UNLESS OTHERWISE NOTED.
 - FOR BASE ANGLE (L5X3) CONNECTIONS, SEE SECTION A LA-S-003.
 - FOR VERT BRGC CONNECTIONS SEE 2 & 8 LA-S-006, 1 & 2 LA-S-007 TYP UNO.



LIGO-D960933-02-O

NO.	DATE	BY	CHKD	ENGR	PROJ	DESCRIPTION
2	08-07-98	IWA				ISSUED FOR AS-BUILT
1	2-28-97	RM	AB	BP		REV GIRTS EL AT ELEV LN K.3 & L.3

ISSUED FOR CONSTRUCTION		
DRAWN	MCS	11-15-96
CHECKED	DDM	11-15-96
ENGINEER	BP	11-15-96
PROJ	TDM	11-15-96

AS-BUILT DRAWINGS



LASER INTERFEROMETER GRAVITATIONAL-WAVE OBSERVATORY SITE NO.2 - LIVINGSTON, LOUISIANA		
TITLE	AS NOTED	PROJECT NUMBER
STRUCTURAL CORNER STATION OSB FRAMING ELEVATIONS SHEET 1	PP150969	8094
SHEET NUMBER		REVISIONS
LA-S-117		2

Wed Oct 7 15:53:59 1998 c:\p1\st\l117.dwg N:\D01\ELCS\2092\117.PDF