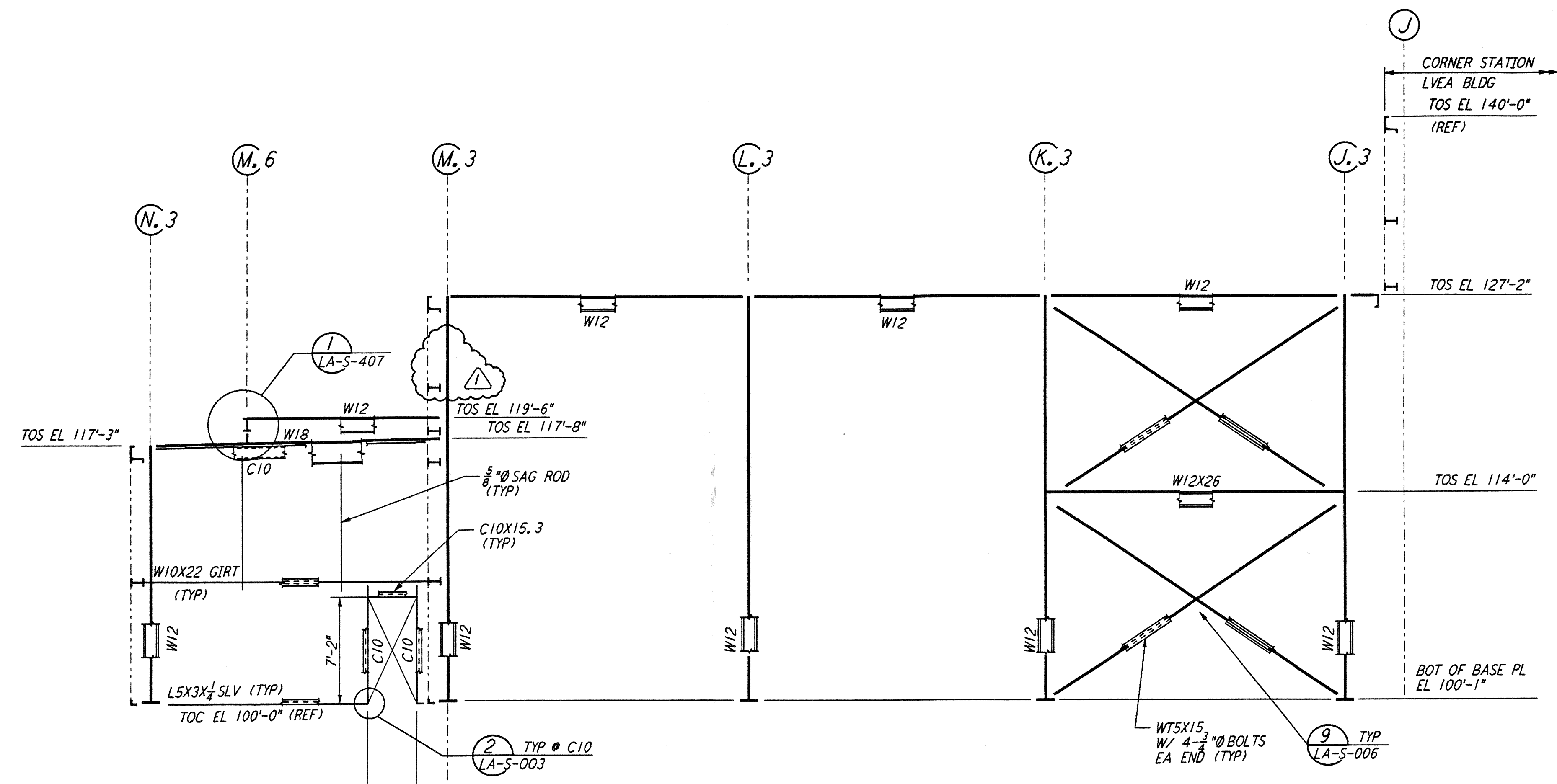
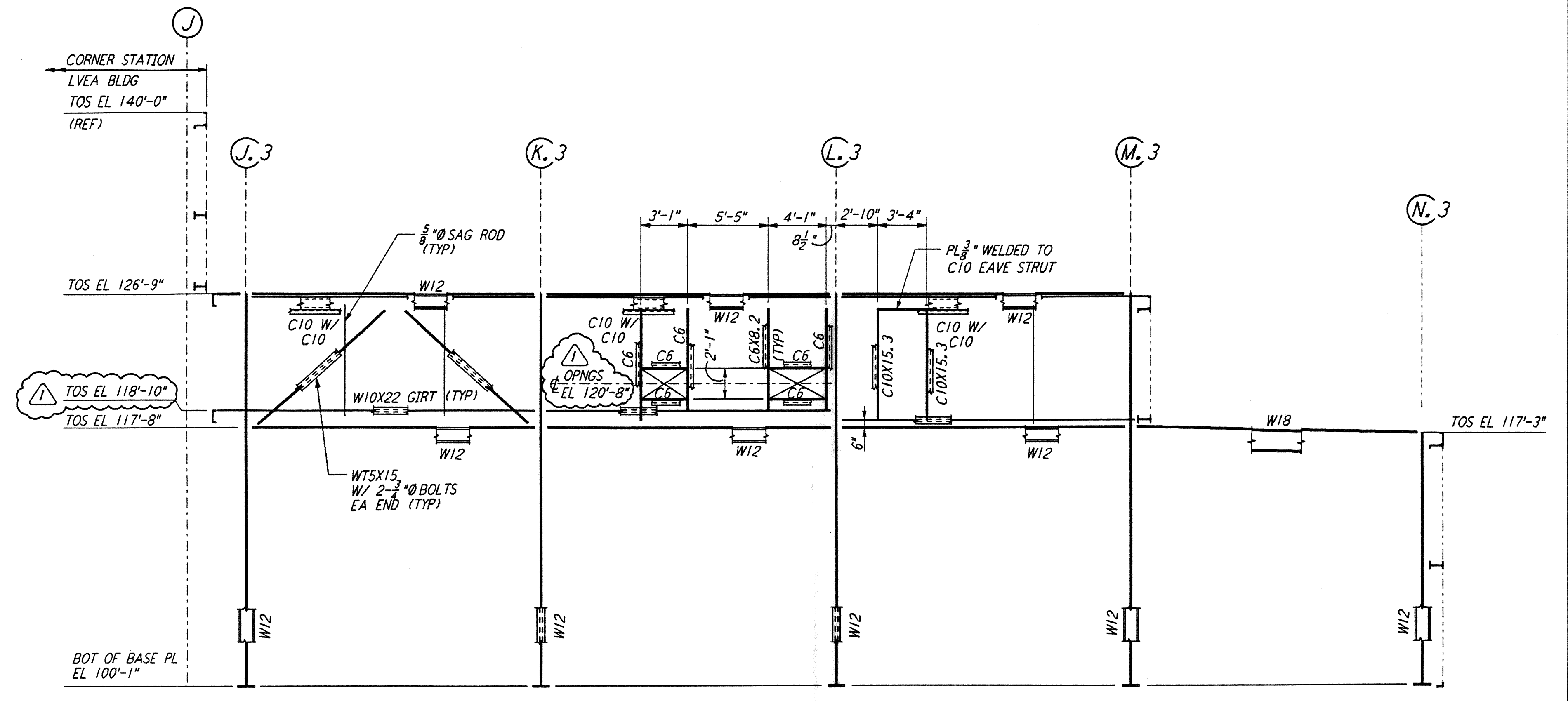


not be reproduced, copied, loaned, exhibited, or used in any other way, except by written consent from PARSONS to the borrower.

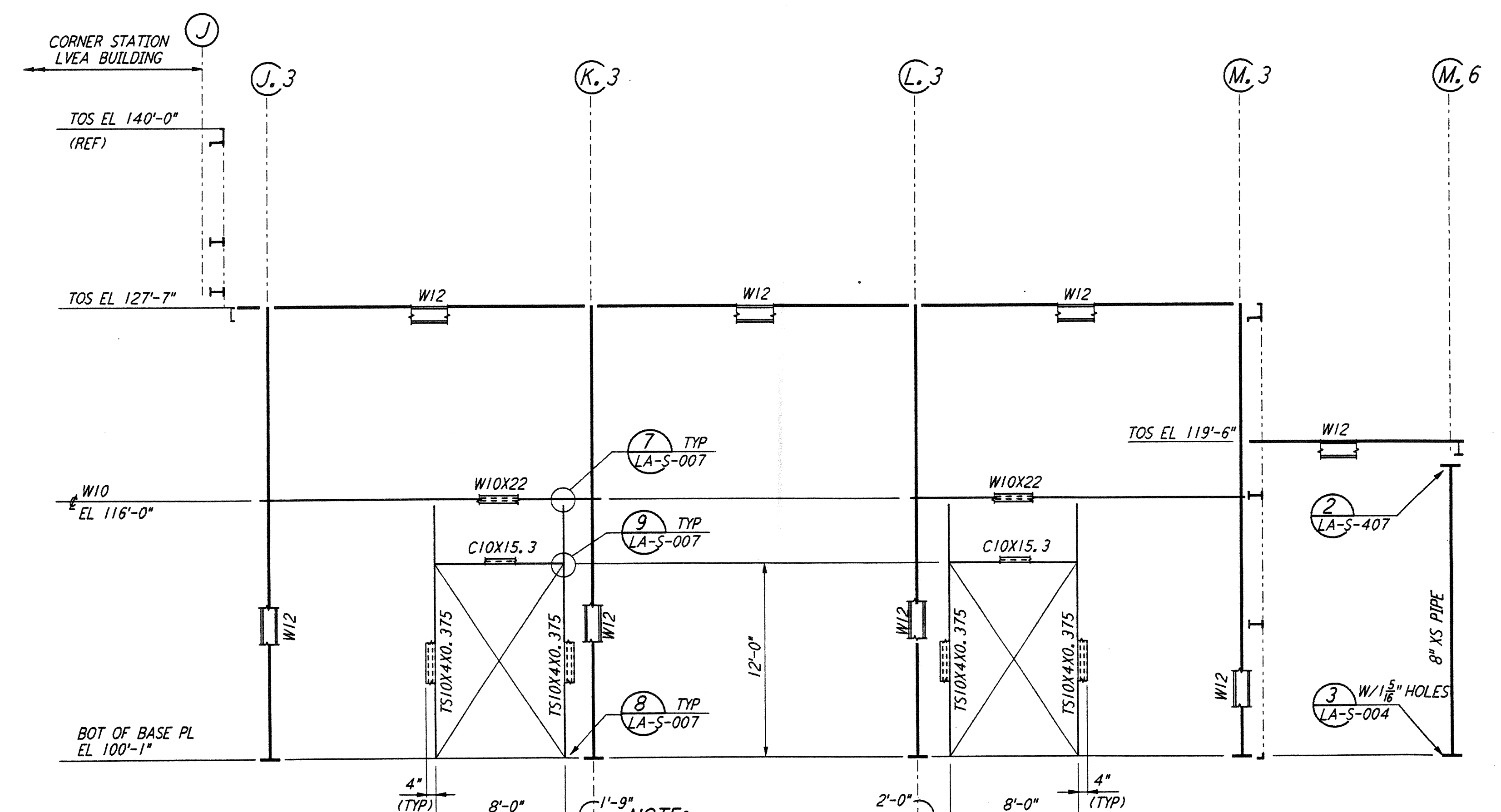
This document and the design it covers are the property of PARSONS. They are loaned only with the borrower's expressed written agreement that they will



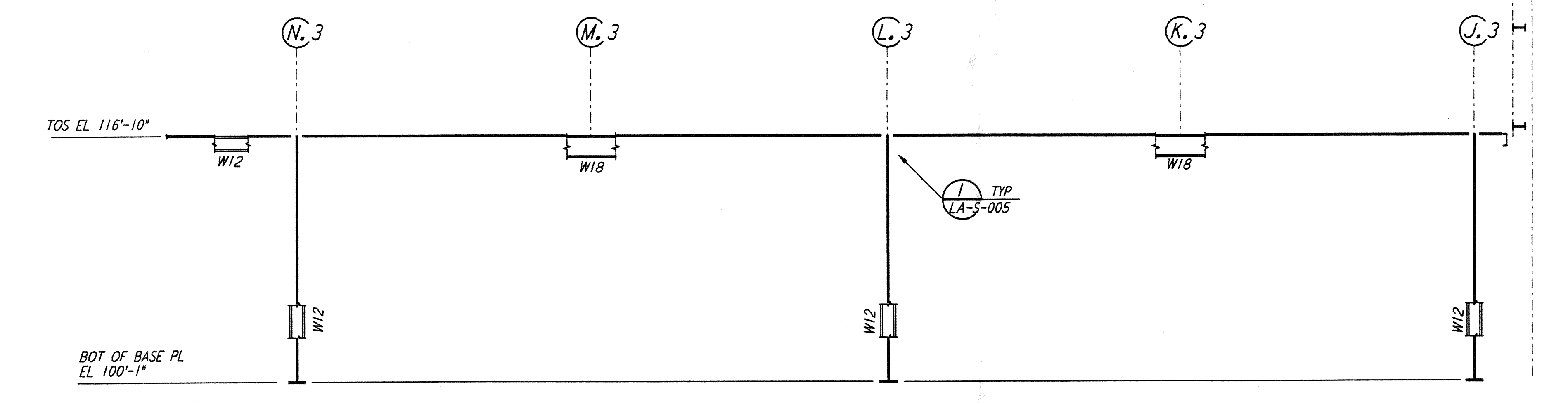
FRAMING ELEVATION AT COLUMN LINE 12.3  
 $\frac{3}{16}'' = 1'-0''$



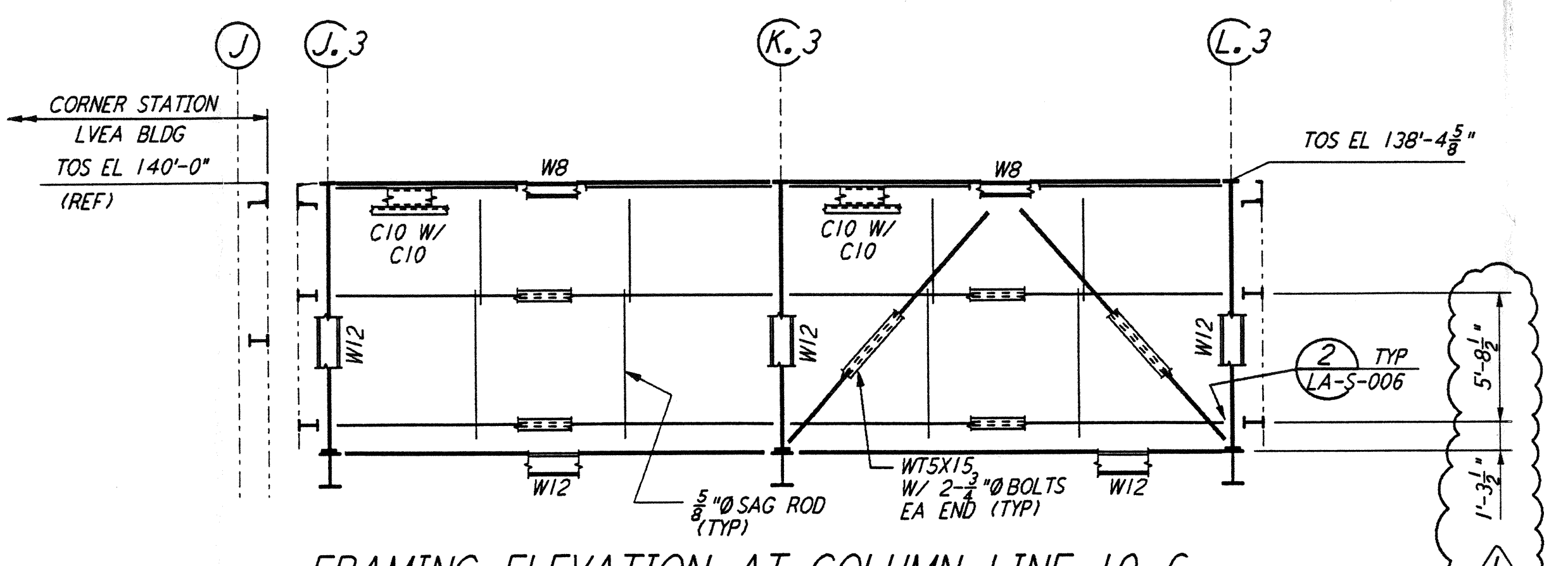
FRAMING ELEVATION AT COLUMN LINE 13.3  
 $\frac{3}{16}'' = 1'-0''$



FRAMING ELEVATION AT COLUMN LINE 11.3  
 $\frac{3}{16}'' = 1'-0''$



FRAMING ELEVATION AT COLUMN LINE 15.3  
 $\frac{3}{16}'' = 1'-0''$



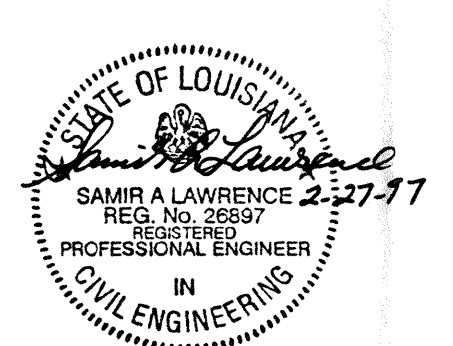
FRAMING ELEVATION AT COLUMN LINE 10.6  
 $\frac{3}{16}'' = 1'-0''$

- NOTES:**
- FOR GENERAL NOTES, ABBREVIATIONS AND SYMBOLS SEE DRAWING LA-S-001.
  - FOR CHANNEL, GIRTS AND EAVE STRUT CONNECTION DETAILS SEE DRAWING LA-S-005.
  - FOR W BEAM TO COLUMN WEB/FLANGE CONNECTIONS, SEE DETAILS (6) LA-S-004 & (4) LA-S-007 TYPICAL UNLESS OTHERWISE NOTED.
  - FOR BASE ANGLE (LSX3) CONNECTIONS, SEE SECTION (A) LA-S-003.
  - FOR VERT BRGC CONNECTIONS SEE (2) LA-S-006 (8) LA-S-006 (1) LA-S-007 (2) LA-S-007 TYP UNON.

LIGO-D960936-01-0  
 $\frac{3}{16}'' = 1'-0''$

NO.	DATE	BY	CHKD	ENGR	PROJ	DESCRIPTION
1	2-28-97	RM	AB	HT		REV GIRTS AT ELEV LN 12.3, 13.3 & 10.6

ISSUED FOR CONSTRUCTION		
DRAWN	MCS	11-15-96
CHECKED	DDM	11-15-96
ENGINEER	BP	11-15-96
PROJ	TDM	11-15-96



100 WEST WALNUT STREET  
 PASADENA, CALIFORNIA



CALIFORNIA INSTITUTE OF TECHNOLOGY  
 MASSACHUSETTS INSTITUTE OF TECHNOLOGY

LASER INTERFEROMETER  
 GRAVITATIONAL-WAVE OBSERVATORY  
 SITE NO. 2 - LIVINGSTON, LOUISIANA

TITLE	SCALE	CONTRACT NUMBER	PROJECT NUMBER
STRUCTURAL CORNER STATION OSB FRAMING ELEVATIONS SHEET 4	AS NOTED	PP150969	8094
SHEET NUMBER		REVISIONS	
LA-S-120			