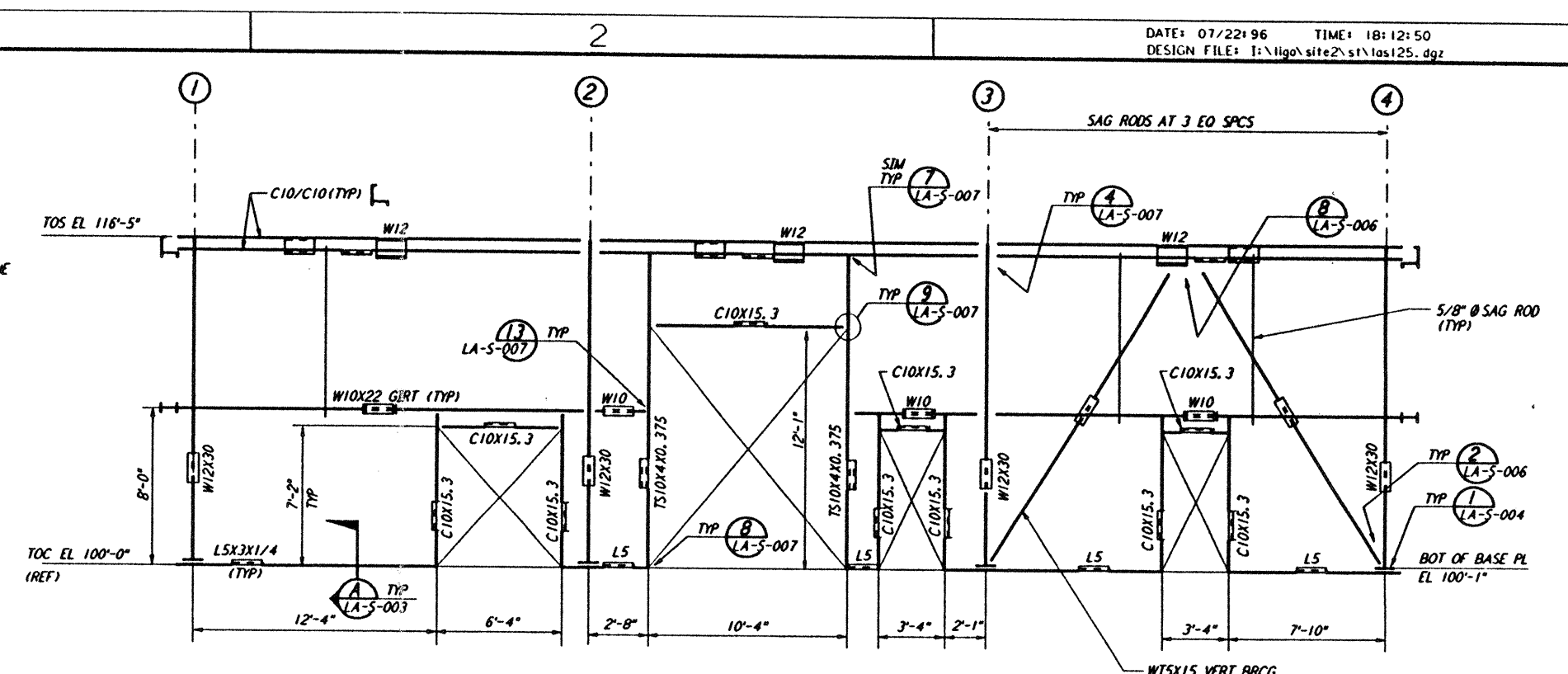
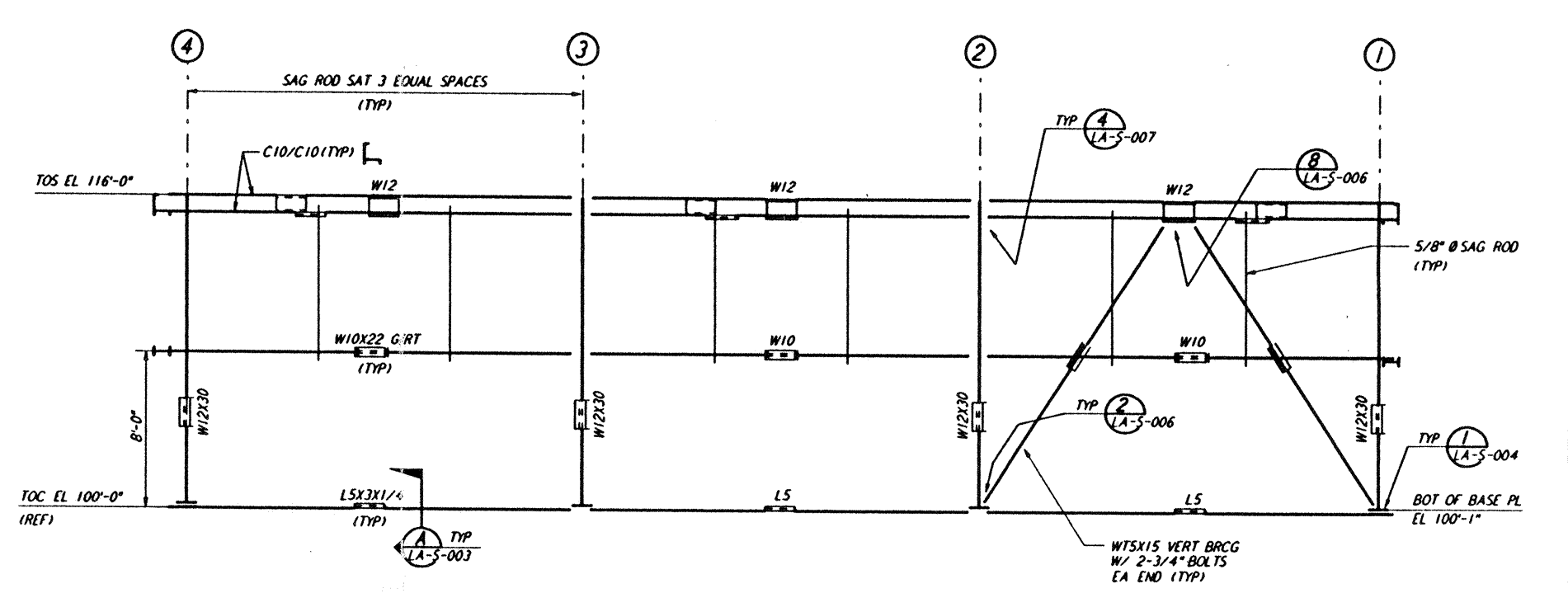


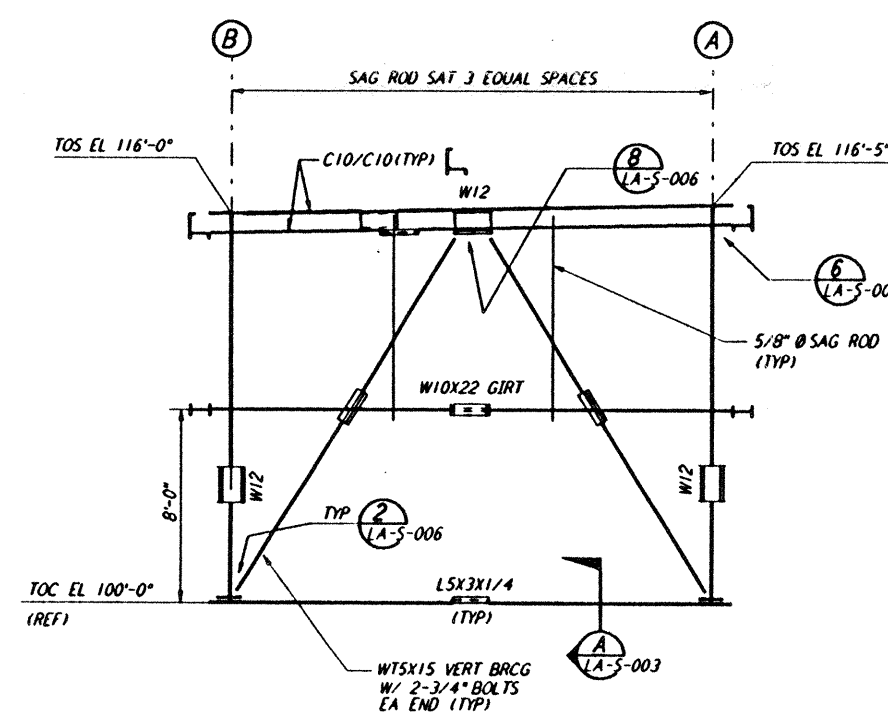
**ROOF FRAMING PLAN**  
 1/4" = 1'-0"



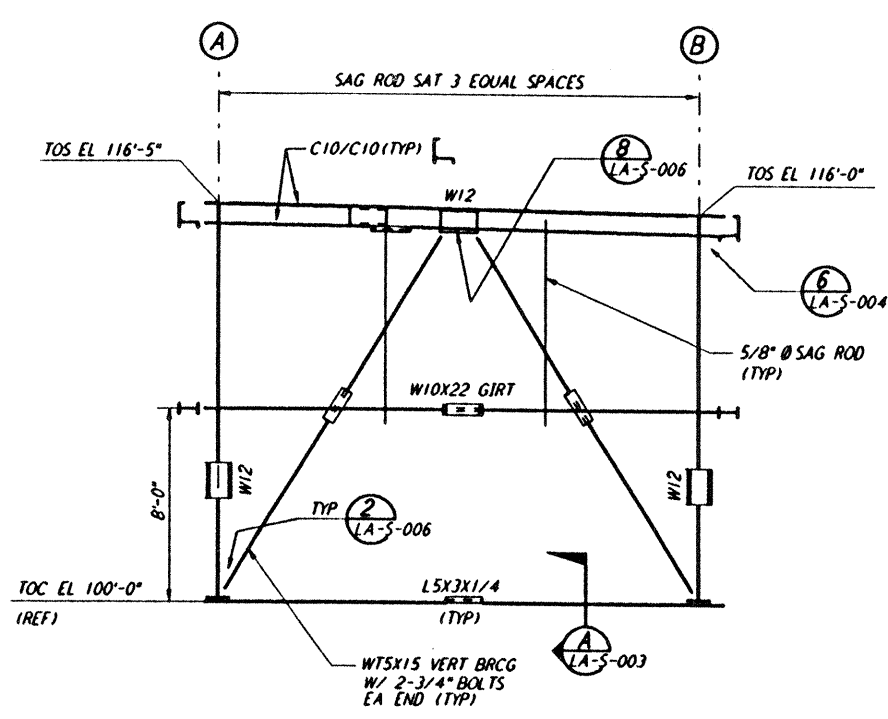
**FRAMING ELEVATION AT COL LINE A**  
 1/4" = 1'-0"



**FRAMING ELEVATION AT COL LINE B**  
 1/4" = 1'-0"

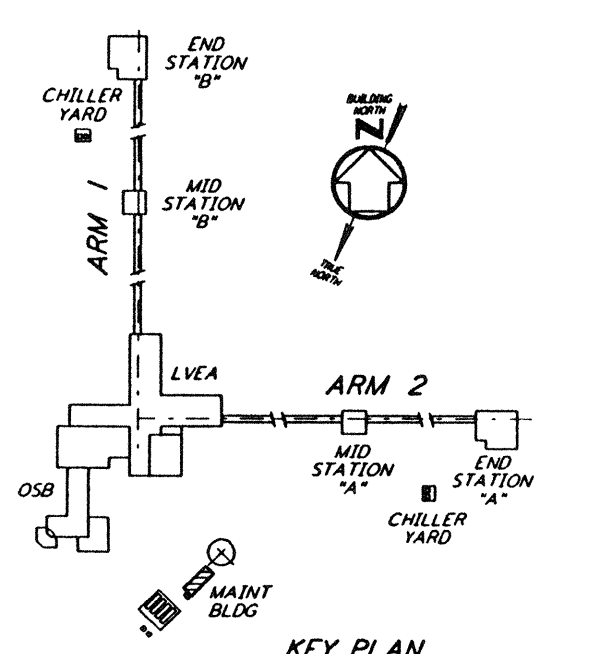
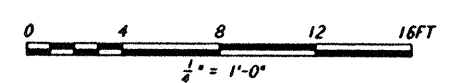


**FRAMING ELEVATION AT COL LINE 1**  
 1/4" = 1'-0"



**FRAMING ELEVATION AT COL LINE 4**  
 1/4" = 1'-0"

**NOTES:**  
 1. FOR GENERAL NOTES, ABBREVIATIONS AND SYMBOLS, SEE DRAWING LA-S-001.  
 2. FOR CHANNEL, GIRT AND EAVE STRUT CONNECTION DETAILS, SEE DRAWING LA-S-005.



**KEY PLAN**

Mon Jul 22 18:12:16 1996 S3-V18B2 J:\PLOTS\NOUEUES\18B2\ST125.PRF  
 This document and the design it covers are the property of PARSONS. They are loaned only with the borrower's expressed written agreement that they will not be reproduced, copied, loaned, exhibited, or used in any other way, except by written consent from PARSONS to the borrower.

NO.	DATE	BY	CHKD	ENGR	PROJ	DESCRIPTION
B	7-24-96	MCS	BY	EDV		ISSUED FOR BID
A	6-14-96	MCS	DDM	BP	TDM	FINAL DESIGN REVIEW

DRAWN	PK
CHECKED	
ENGINEER	
PROJ	

**PARSONS**  
 100 WEST WALNUT STREET  
 PASADENA, CALIFORNIA

**LIGO**  
 CALIFORNIA INSTITUTE OF TECHNOLOGY  
 MASSACHUSETTS INSTITUTE OF TECHNOLOGY

LASER INTERFEROMETER  
 GRAVITATIONAL-WAVE OBSERVATORY  
 SITE NO. 2 - LIVINGSTON, LOUISIANA

STRUCTURAL  
 MAINTENANCE BUILDING  
 ROOF FRAMING PLAN &  
 FRAMING ELEVATIONS

AS NOTED PPI50969 8094  
**LA-S-125**

LIGO-D960941-B-O

LIGLAF.BDR