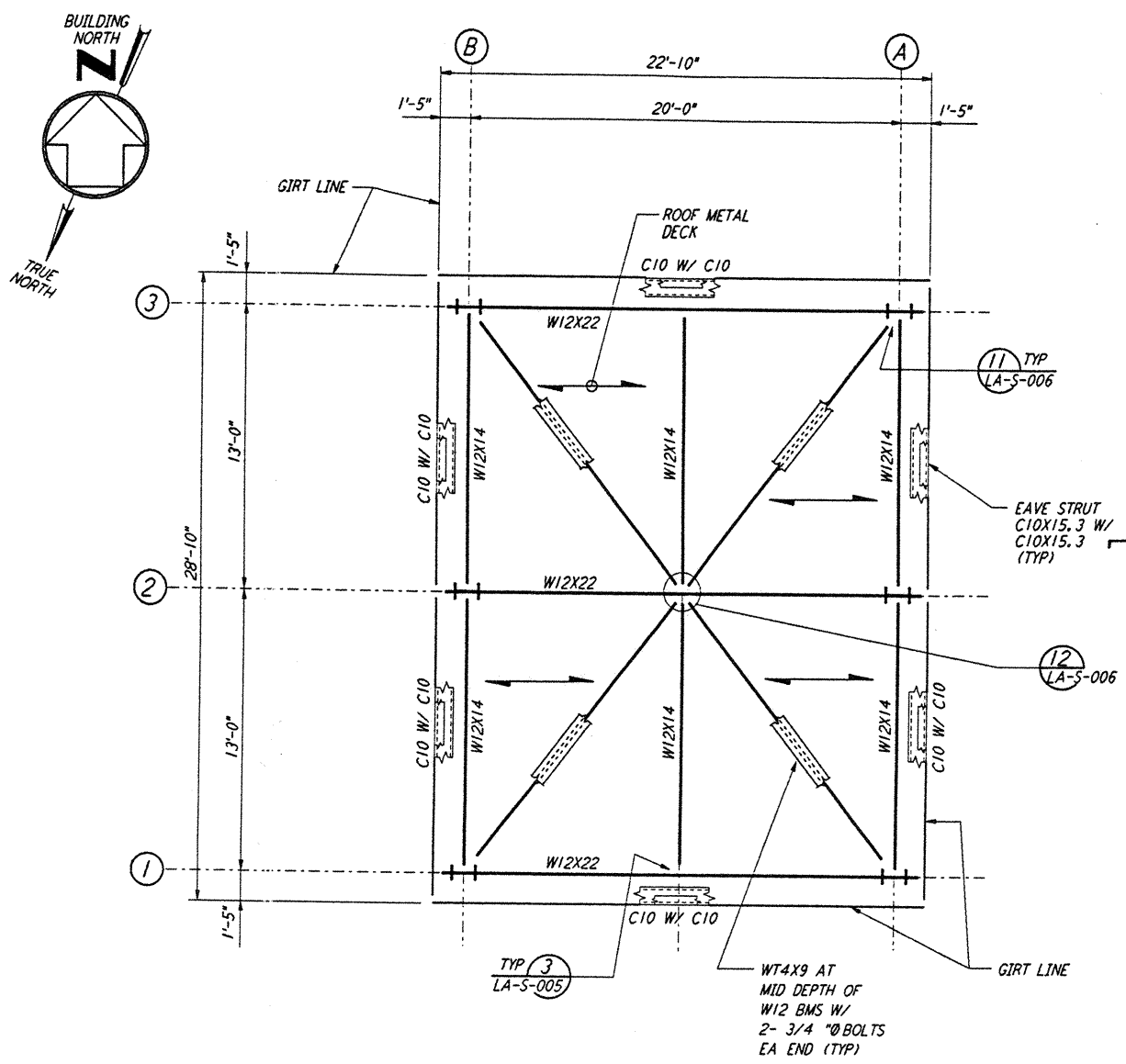


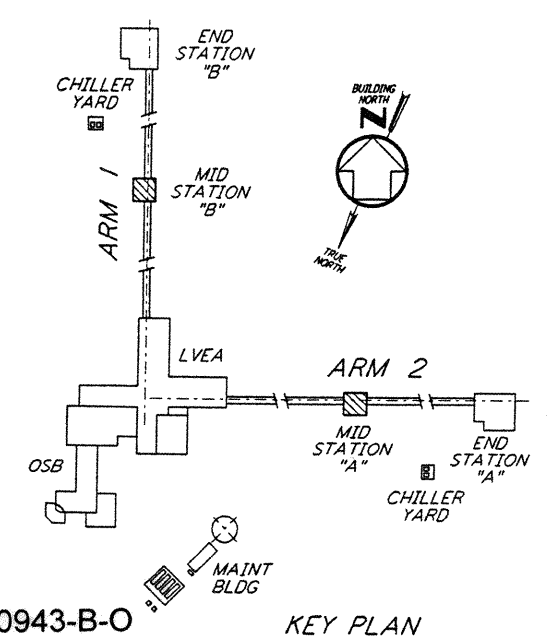
**ARM 2**  
**MID STATION "A" - ROOF FRAMING PLAN**  
 1/4" = 1'-0"



**ARM 1**  
**MID STATION "B" - ROOF FRAMING PLAN**  
 1/4" = 1'-0"

- NOTES:**
1. FOR GENERAL NOTES, ABBREVIATIONS AND SYMBOLS, SEE DRAWING LA-S-001.
  2. FOR EAVE STRUT CONNECTION DETAILS, SEE DRAWING LA-S-005.

This document and the design it covers are the property of PARSONS. They are loaned only with the borrower's expressed written agreement that they will not be reproduced, copied, loaned, exhibited, or used in any other way, except by written consent from PARSONS to the borrower.



0 4 8 12 16 FT  
 1/4" = 1'-0" LIGO-D960943-B-0 **KEY PLAN**

NO.	DATE	BY	CHKD	ENGR	PROJ	DESCRIPTION
B	6-14-96	MCS				FINAL DESIGN REVIEW
A	10-31-95					PRELIMINARY DESIGN REVIEW

DRAWN	MCS
CHECKED	
ENGINEER	
PROJ	

**PARSONS**  
 100 WEST WALNUT STREET  
 PASADENA, CALIFORNIA

**LIGO**  
 CALIFORNIA INSTITUTE OF TECHNOLOGY  
 MASSACHUSETTS INSTITUTE OF TECHNOLOGY

LASER INTERFEROMETER  
 GRAVITATIONAL-WAVE OBSERVATORY  
 SITE NO. 2 - LIVINGSTON, LOUISIANA

STRUCTURAL  
 MID STATIONS "A" & "B"  
 ROOF FRAMING PLANS

AS NOTED PP150969 8094  
**LA-S-202**