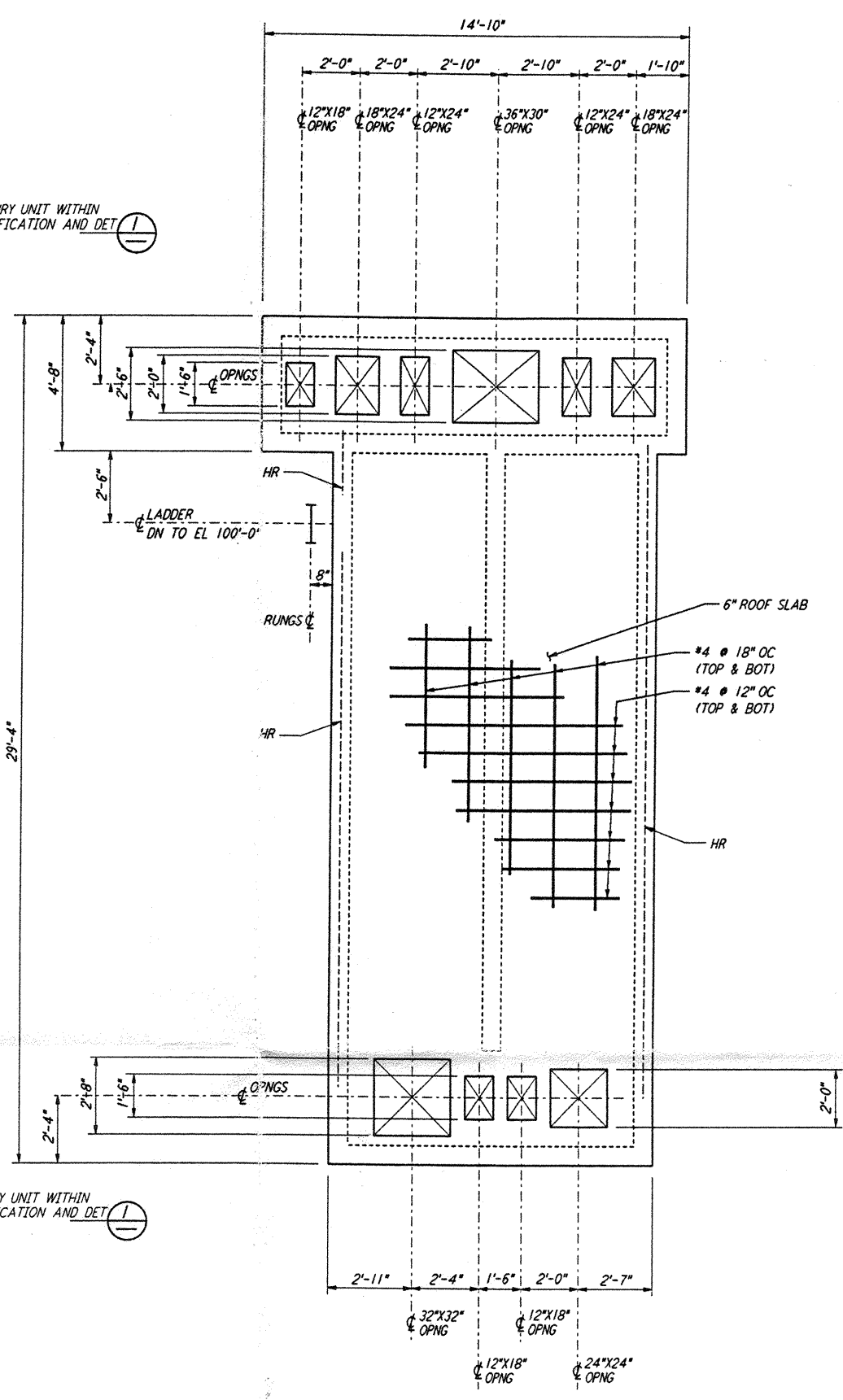
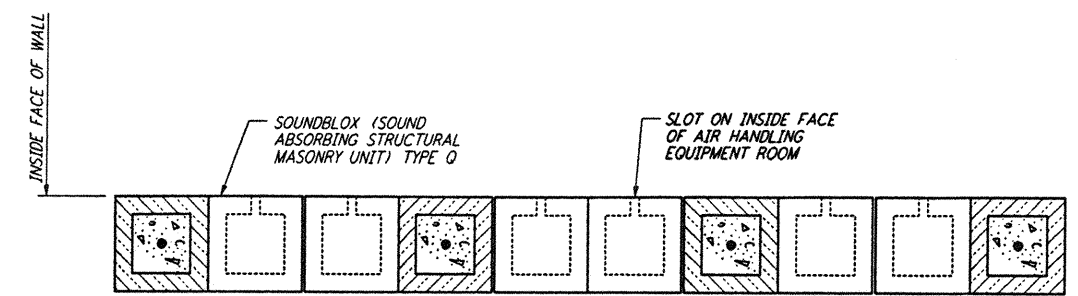


AIR HANDLING UNIT STRUCTURE
FOUNDATION PLAN
 $\frac{3}{8}'' = 1'-0''$

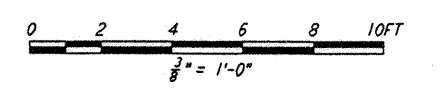


AIR HANDLING UNIT STRUCTURE
CONCRETE ROOF SLAB PLAN
 $\frac{3}{8}'' = 1'-0''$



TYPICAL SECTION OF SOUNDBLOSS MASONRY WALL
DETAIL
 $\frac{1}{2}'' = 1'-0''$

NOTES:
 1. LOCATION AND SIZE OF ALL EQUIPMENT PADS ARE FOR BID PURPOSE ONLY. CONTRACTOR SHALL ADJUST TO SUIT ACTUAL EQUIPMENT AND SUBMIT DRAWINGS SHOWING ACTUAL SIZES AND LOCATIONS PRIOR TO CONSTRUCTION.
 2. FOR AIR HANDLING UNIT STRUCTURE ORIENTATION, SEE FOUNDATION PLAN ON DRAWING LA-S-301.



LIGO-D960946-A-0

DRAWING NO. 5		DESCRIPTION		REVISONS				DRAWN MCS		CHECKED		ENGINEER		PROJ	
A	6-14-96	MCS	ben	A	adm	adm	adm	adm	adm	adm	adm	adm	adm	adm	
NO.		DATE		BY		CHKD		ENGR		PROJ		DESCRIPTION			
												FINAL DESIGN REVIEW			

PARSONS
 100 WEST WALNUT STREET
 PASADENA, CALIFORNIA

LIGO
 CALIFORNIA INSTITUTE OF TECHNOLOGY
 MASSACHUSETTS INSTITUTE OF TECHNOLOGY

LASER INTERFEROMETER
 GRAVITATIONAL-WAVE OBSERVATORY
 SITE NO. 2 - LIVINGSTON, LOUISIANA

TITLE		SCALE	CONTRACT NUMBER	PROJECT NUMBER
STRUCTURAL END STATIONS "A" & "B" AIR HANDLING UNIT ENCLOSURE PLANS		AS NOTED	PP150969	8094
SHEET NUMBER		REVISIONS		
LA-S-302				

not be reproduced, copied, loaned, exhibited, or used in any other way, except by written consent from PARSONS to the borrower.

This document and the design it covers are the property of PARSONS. They are loaned only with the borrower's expressed written agreement that they will