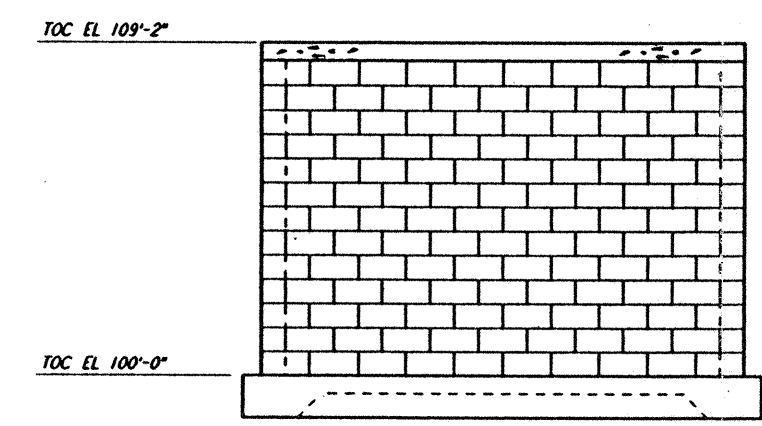
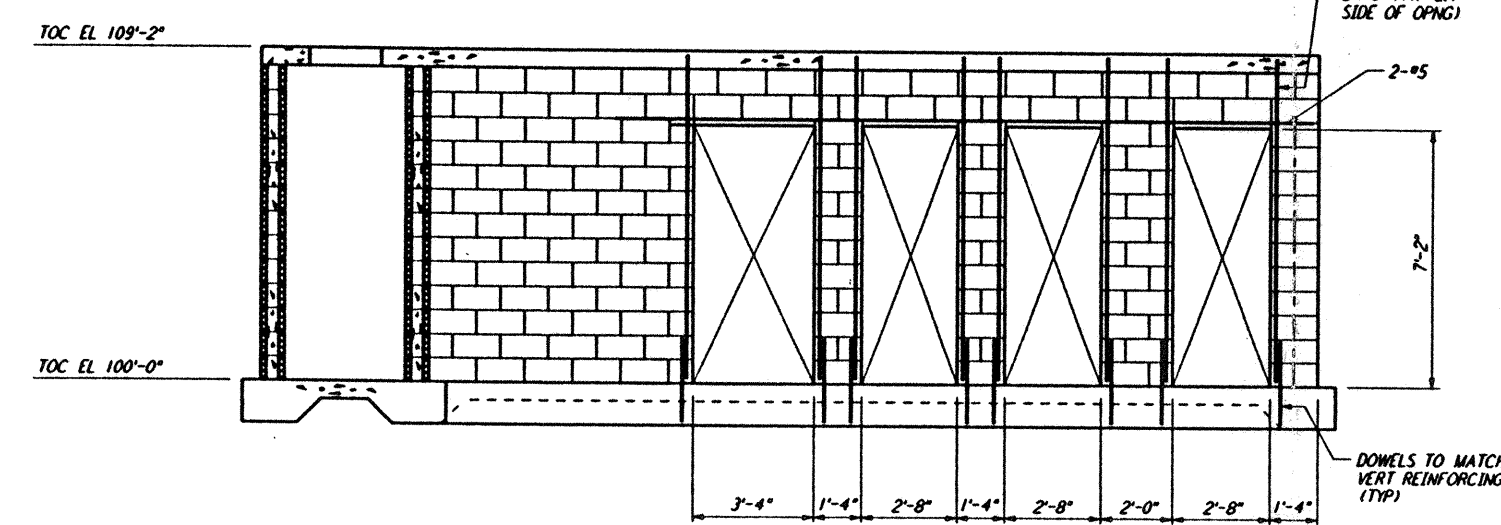


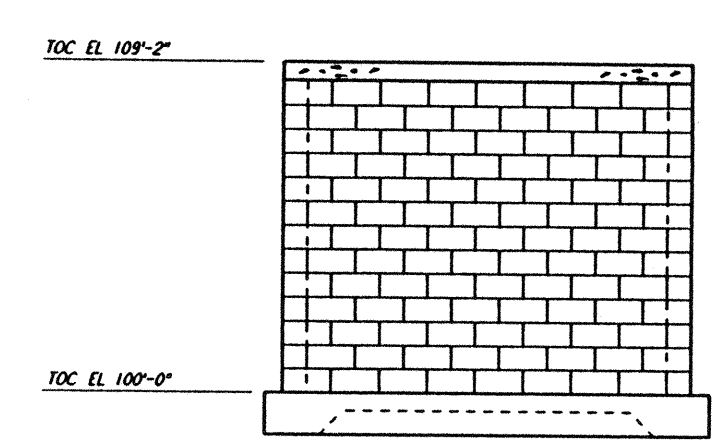
Mon Jul 22 18:26:44 1996 S3-V18B2 J:\PLOTS\QUEUES\18B2\ST303.PRF



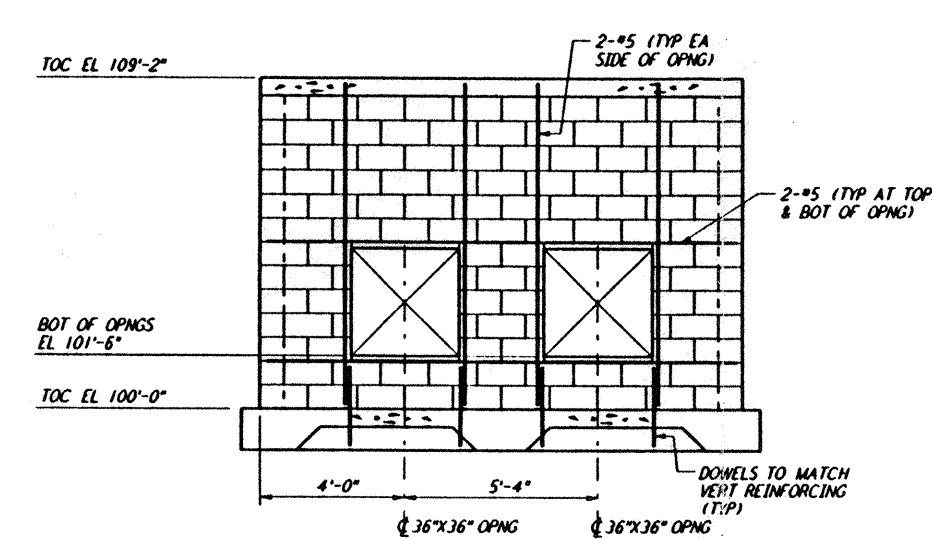
ELEVATION A REF
 LA-S-303 LA-S-302
 1/4" = 1'-0"



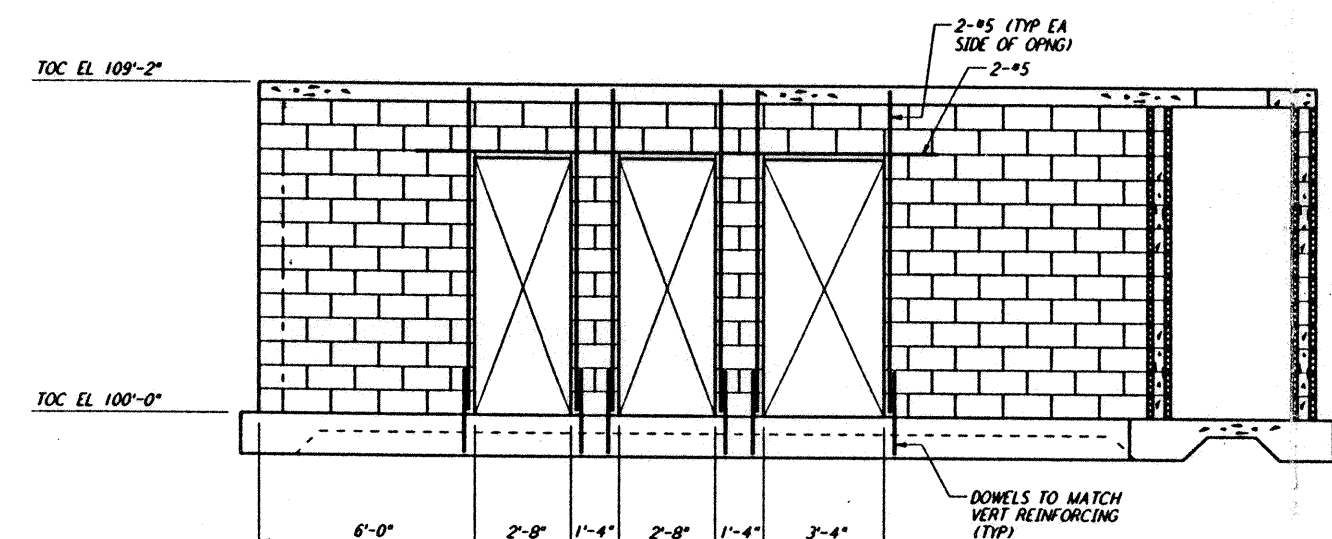
ELEVATION B REF
 LA-S-303 LA-S-302
 1/4" = 1'-0"



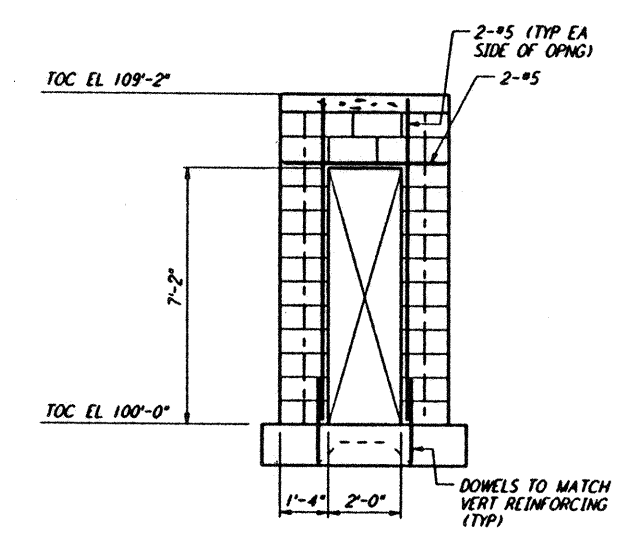
ELEVATION C REF
 LA-S-303 LA-S-302
 1/4" = 1'-0"



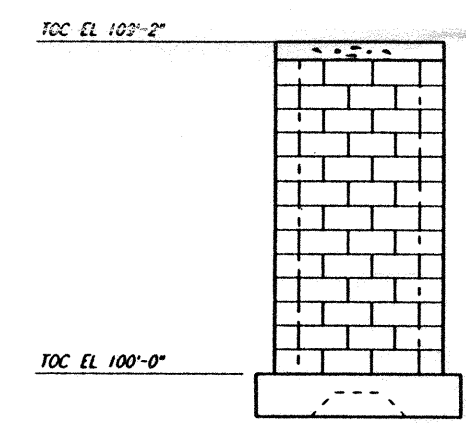
ELEVATION D REF
 LA-S-303 LA-S-302
 1/4" = 1'-0"



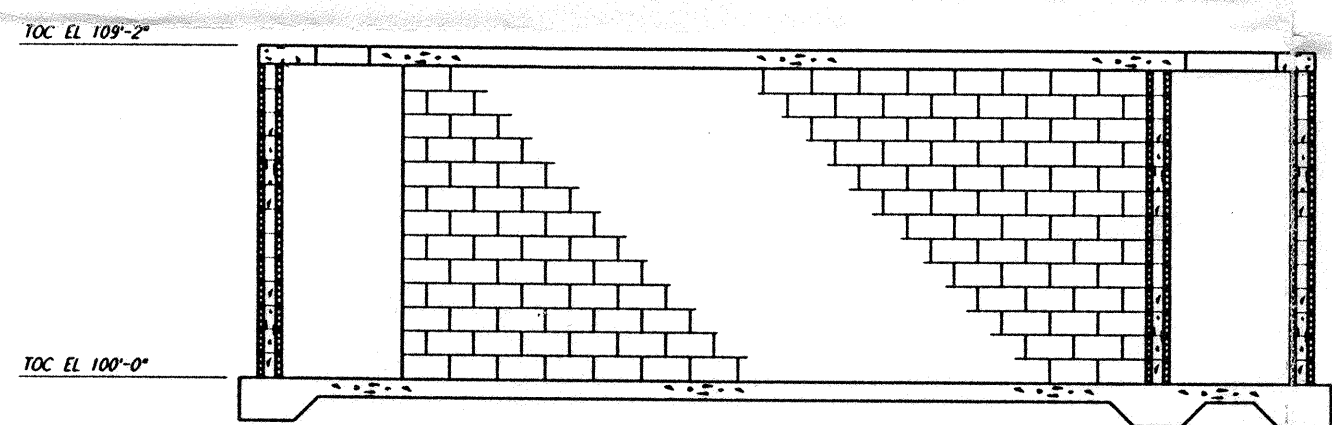
ELEVATION E REF
 LA-S-303 LA-S-302
 1/4" = 1'-0"



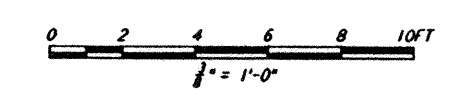
ELEVATION F REF
 LA-S-303 LA-S-302
 1/4" = 1'-0"



ELEVATION G REF
 LA-S-303 LA-S-302
 1/4" = 1'-0"



ELEVATION H REF
 LA-S-303 LA-S-302
 1/4" = 1'-0"



NO.	DATE	BY	CHKD	ENGR	PROJ	DESCRIPTION
B	7-24-96	MCS				ISSUED FOR BID
A	6-14-96	MCS	DDM	BP	TDM	FINAL DESIGN REVIEW

DRAWN	MCS
CHECKED	
ENGINEER	
PROJ	

PARSONS
 100 WEST WALNUT STREET
 PASADENA, CALIFORNIA

LIGO
 CALIFORNIA INSTITUTE OF TECHNOLOGY
 MASSACHUSETTS INSTITUTE OF TECHNOLOGY

LASER INTERFEROMETER
 GRAVITATIONAL-WAVE OBSERVATORY
 SITE NO. 2 - LIVINGSTON, LOUISIANA

TITLE	SCALE	CONTRACT NUMBER	PROJECT NUMBER
STRUCTURAL END STATIONS "A" & "B" AIR HANDLING UNIT ENCLOSURE ELEVS & SECTS	AS NOTED	PP150969	8094
LA-S-303		LIGO-D960947-B-O	

5

4

3

2

A

B

C

D

E