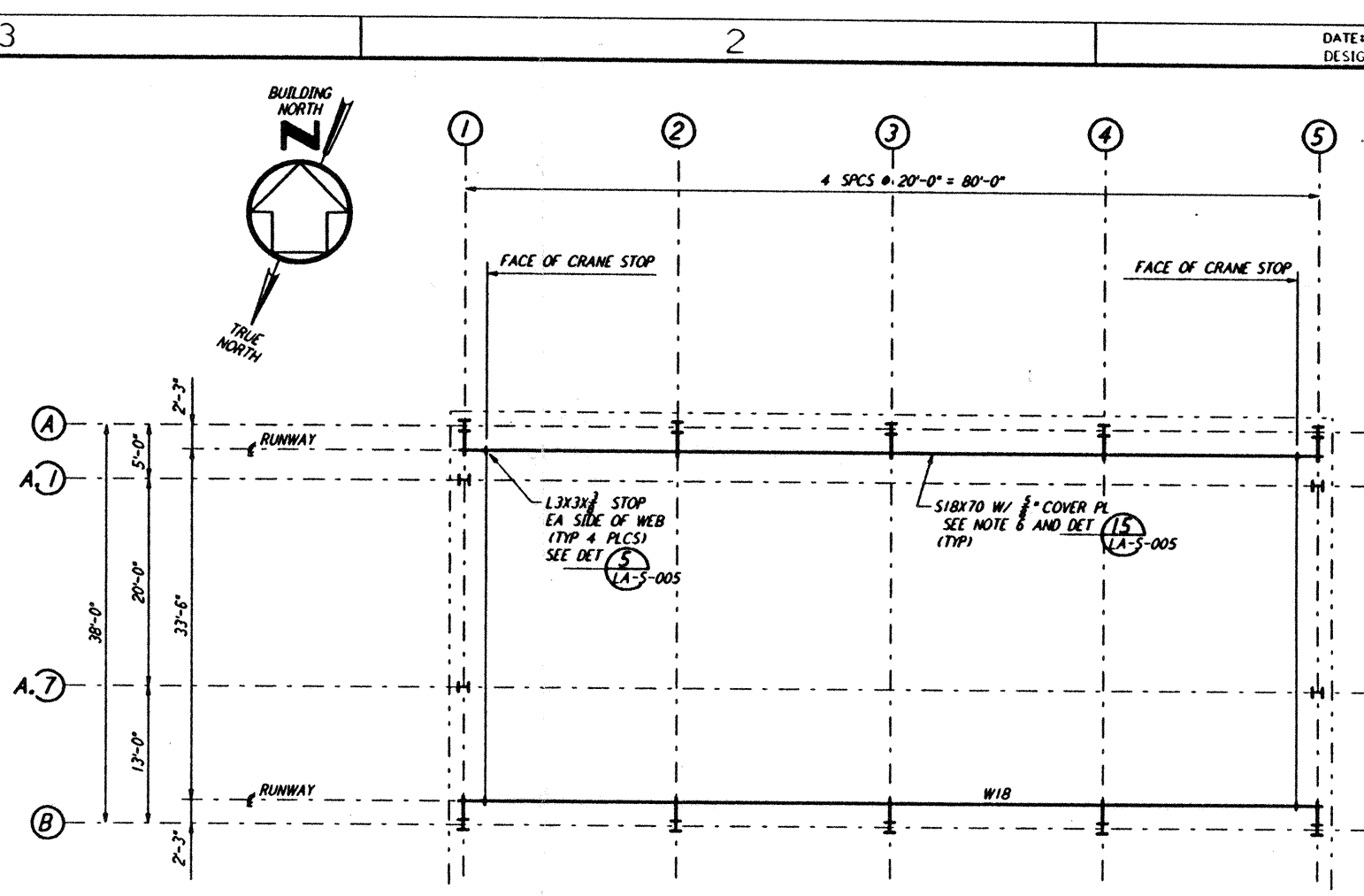


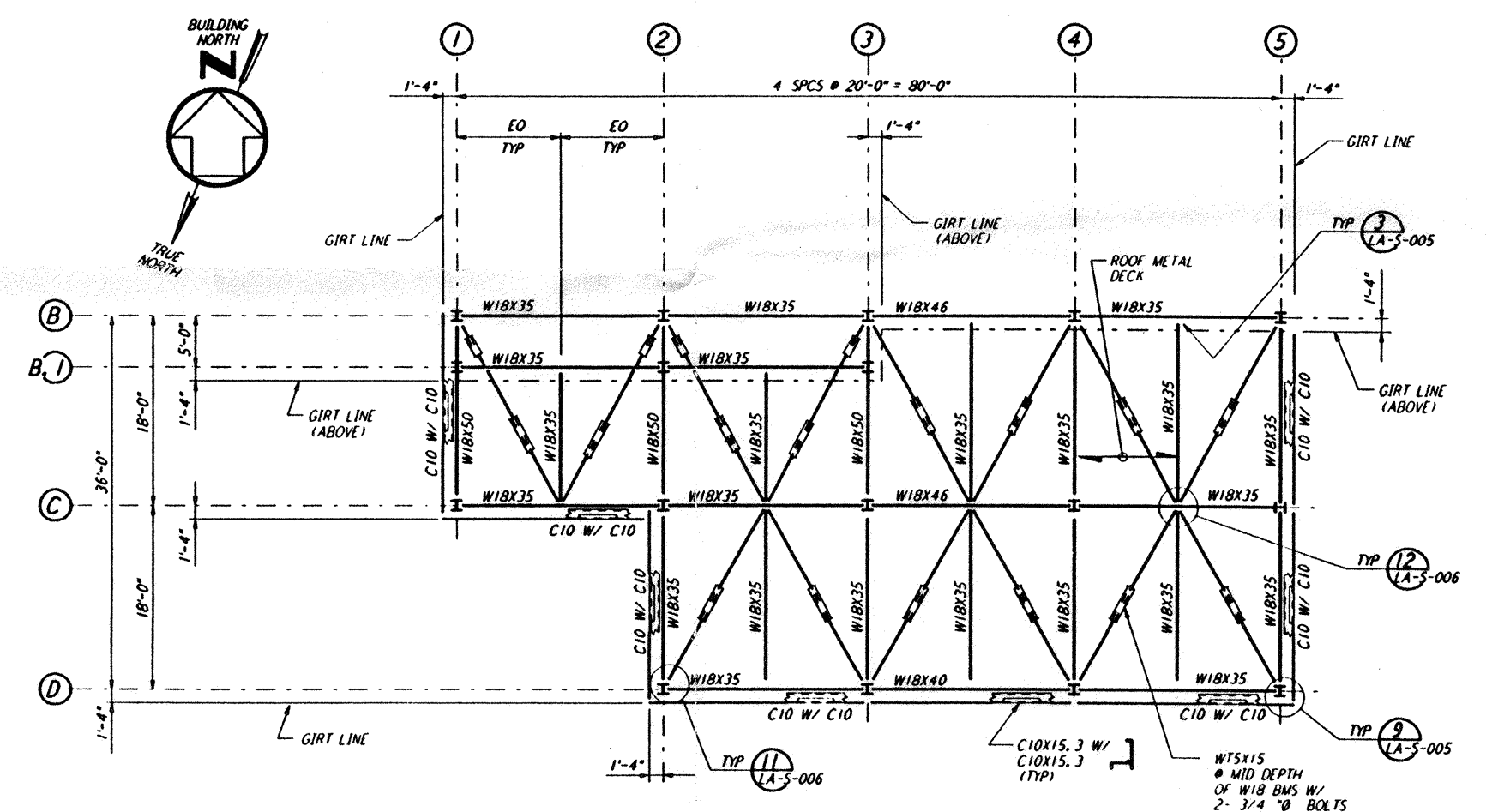
FOR END STATION "A" ON ARM 2
 HIGH ROOF FRAMING PLAN
 1/8" = 1'-0"



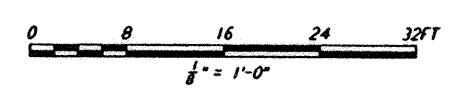
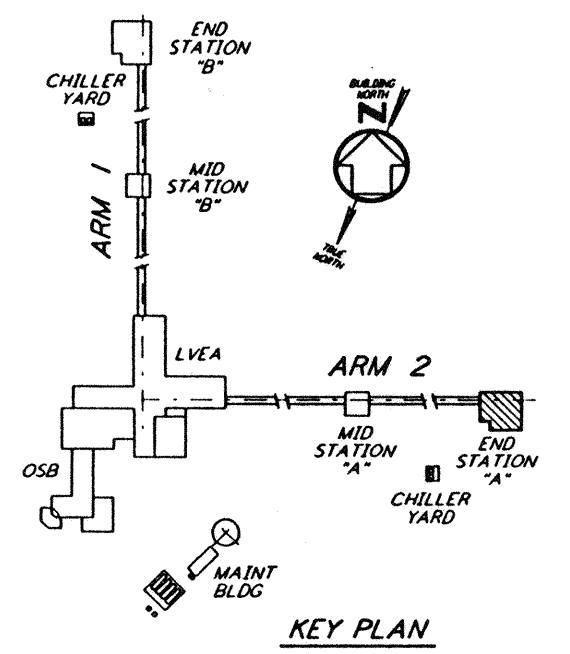
FOR END STATION "A" ON ARM 2
 CRANE GIRDER FRAMING PLAN
 1/8" = 1'-0"

NOTES:

1. FOR GENERAL NOTES, ABBREVIATIONS AND SYMBOLS SEE DRAWING LA-S-001.
2. FOR ROOF FRAMING PLANS AND CRANE GIRDER FRAMING PLAN ON ARM 1, SEE DRAWING LA-S-308.
3. FABRICATOR SHALL STAGGER THE SPLICES IN CRANE RUNWAY GIRDERS.
4. FOR ADDITIONAL NOTES SEE DRAWING LA-S-107.
5. CRANE STOPS SHALL BE FIELD LOCATED TO PROVIDE CRANE COVERAGE AS PER SPECIFICATIONS.
6. ROLLING SURFACE OF CRANE RAILS SHALL BE POLISHED TO PROVIDE "FLAKE FREE" OPERATION.



FOR END STATION "A" ON ARM 2
 LOW ROOF FRAMING PLAN
 1/8" = 1'-0"



Mon Jul 22 18:29:08 1996 53-V18B2 J:\PLOTS\QUEUES\18B2\ST304.PRF
 This document and the design it covers are the property of PARSONS. They are loaned only with the borrower's expressed written agreement that they will not be reproduced, copied, loaned, exhibited, or used in any other way, except by written consent from PARSONS to the borrower.

NO.	DATE	BY	CHK'D	ENGR	PROJ.	DESCRIPTION
C	7-24-96	AKCS	DATA	BP	TOM	ISSUED FOR BID
B	6-14-96	AKCS	DDM	BP	TOM	FINAL DESIGN REVIEW
A	10-31-95				TOM	PRELIMINARY DESIGN REVIEW

DRAWN	MCS
CHECKED	
ENGINEER	
PROJ	

PARSONS
 100 WEST WALNUT STREET
 PASADENA, CALIFORNIA

LIGO
 CALIFORNIA INSTITUTE OF TECHNOLOGY
 MASSACHUSETTS INSTITUTE OF TECHNOLOGY

LASER INTERFEROMETER
 GRAVITATIONAL-WAVE OBSERVATORY
 SITE NO. 2 - LIVINGSTON, LOUISIANA

TITLE	SCALE	CONTRACT NUMBER	PROJECT NUMBER
STRUCTURAL END STATION "A" ROOF & CRANE GIRDER FRAMING PLANS	AS NOTED	PP150969	8094
SHEET NUMBER		REVISION	
LA-S-304			