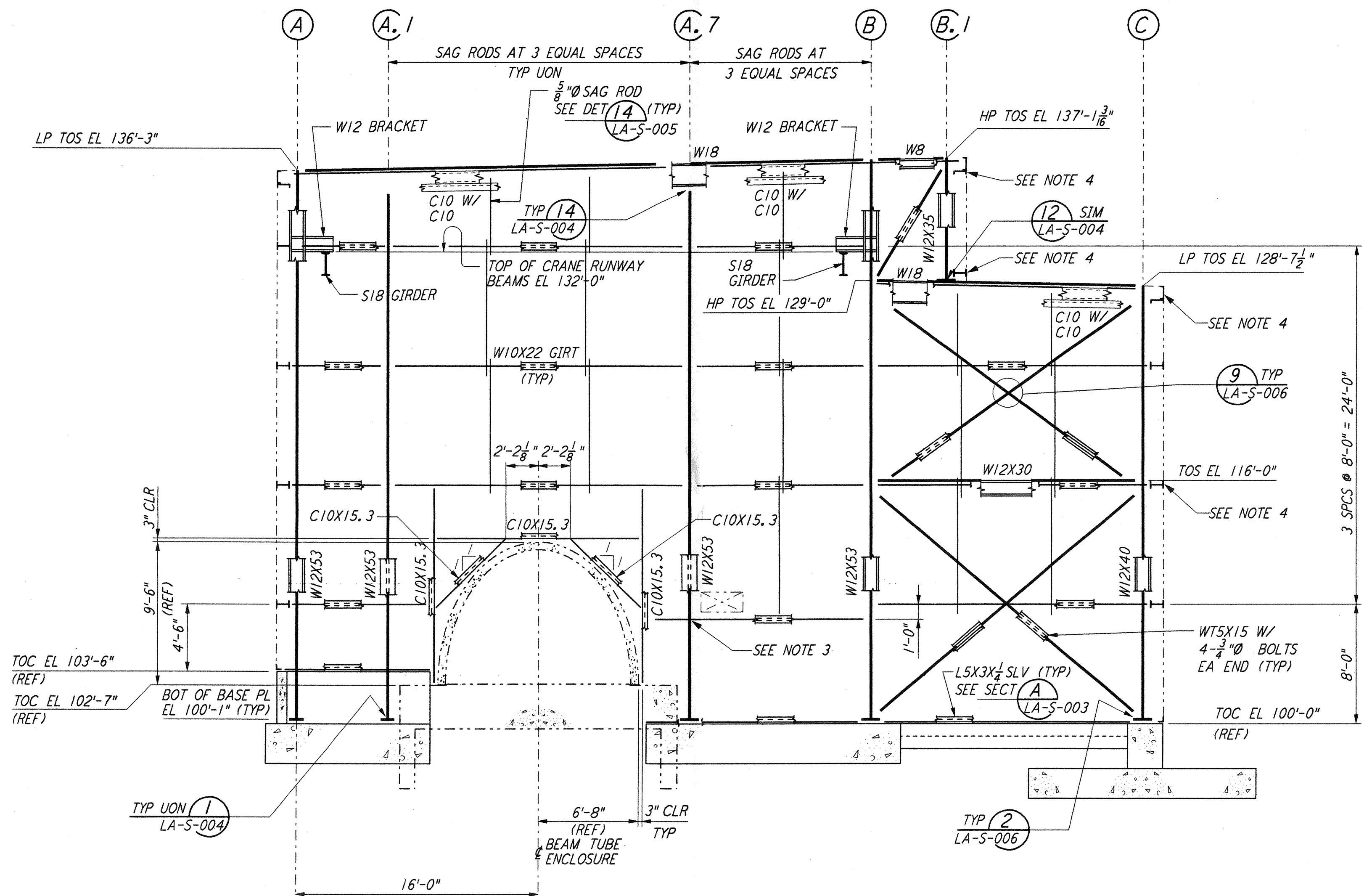
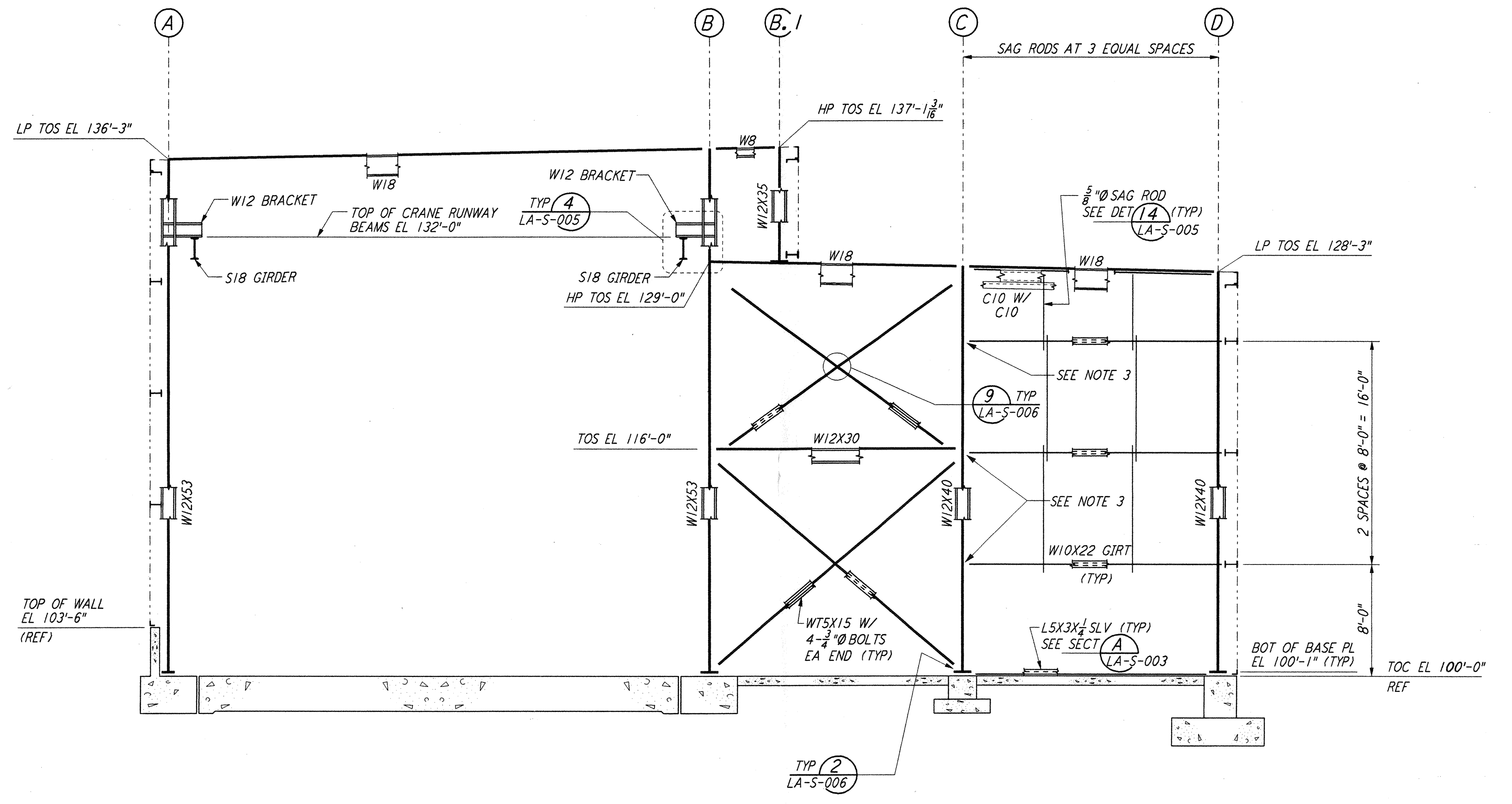


not be reproduced, copied, loaned, exhibited, or used in any other way, except by written consent from PARSONS to the borrower.

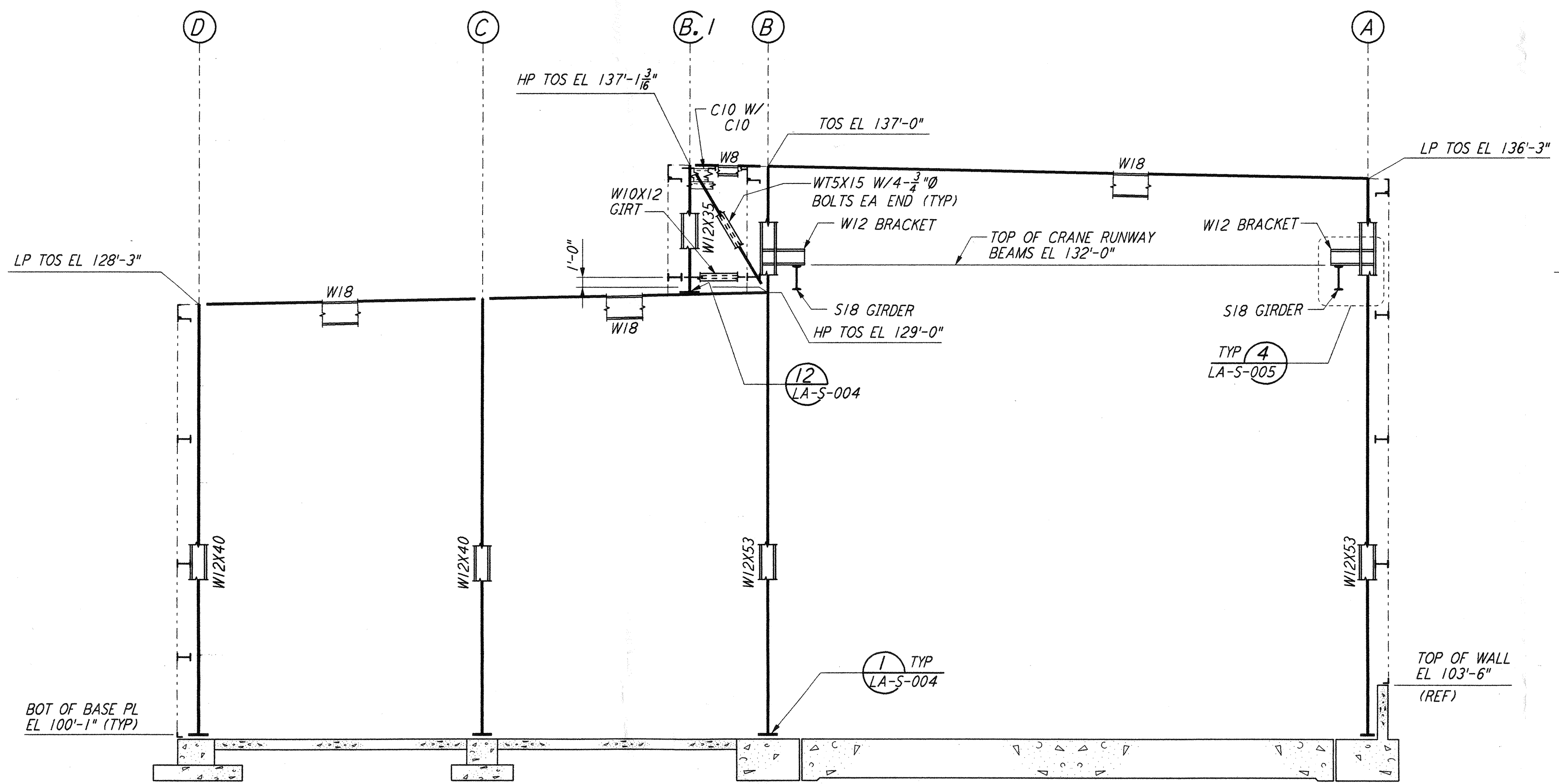
This document and the design it covers are the property of PARSONS. They are loaned only with the borrower's expressed written agreement that they will



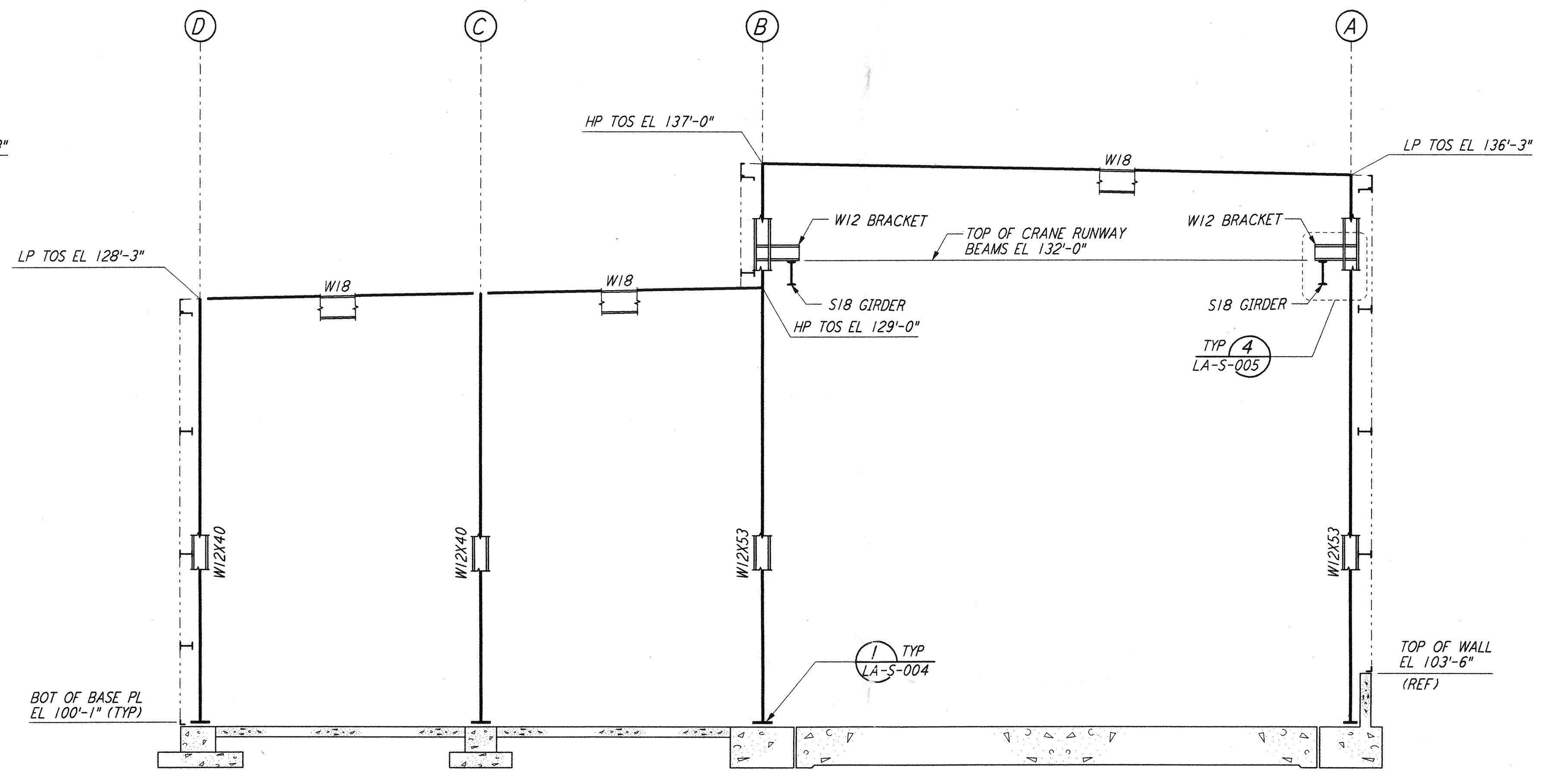
LOOKING SOUTH - FOR END STATION "B" ON ARM 1  
 LOOKING EAST - FOR END STATION "A" ON ARM 2  
 ELEVATION AT COLUMN LINE 1  
 $\frac{3}{8}'' = 1'-0''$



LOOKING SOUTH - FOR END STATION "B" ON ARM 1  
 LOOKING EAST - FOR END STATION "A" ON ARM 2  
 ELEVATION AT COLUMN LINE 2  
 $\frac{3}{8}'' = 1'-0''$

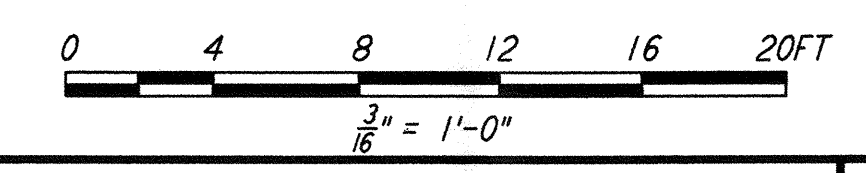


LOOKING NORTH - FOR END STATION "B" ON ARM 1  
 LOOKING WEST - FOR END STATION "A" ON ARM 2  
 ELEVATION AT COLUMN LINE 3  
 $\frac{3}{8}'' = 1'-0''$



LOOKING NORTH - FOR END STATION "B" ON ARM 1  
 LOOKING WEST - FOR END STATION "A" ON ARM 2  
 ELEVATION AT COLUMN LINE 4  
 $\frac{3}{8}'' = 1'-0''$

- NOTES:**
- FOR NOTES SEE DRAWING LA-S-107.
  - FOR VERTICAL BRACING CONNECTIONS, SEE DETAIL (5) LA-S-006
  - FIELD WELD BOTH LEGS L4X3 $\frac{1}{2}$  CONNECTORS TO C10 GIRTS.
  - ATTACH LADDER SUPPORTS PER STANDARD DETAIL AT GIRTS.



REV.	NO.	DATE	BY	CHKD	ENGR	PROJ	DESCRIPTION
1	08-07-98	WA	GM	GM	WJ		ISSUED FOR AS-BUILT

ISSUED FOR CONSTRUCTION	
DRAWN	MCS 11-15-96
CHECKED	DDM 11-15-96
ENGINEER	BP 11-15-96
PROJ	TDM 11-15-96

**AS-BUILT DRAWINGS**

100 WEST WALNUT STREET  
PASADENA, CALIFORNIA

CALIFORNIA INSTITUTE OF TECHNOLOGY  
MASSACHUSETTS INSTITUTE OF TECHNOLOGY

**LIGO-D960949-01-0**

LASER INTERFEROMETER  
GRAVITATIONAL-WAVE OBSERVATORY  
SITE NO. 2 - LIVINGSTON, LOUISIANA

TITLE	SCALE	CONTRACT NUMBER	PROJECT NUMBER
STRUCTURAL END STATIONS "A" & "B" FRAMING ELEVATIONS SHEET 1	AS NOTED	PP150969	8094
SHEET NUMBER	LA-S-305		REVISIONS