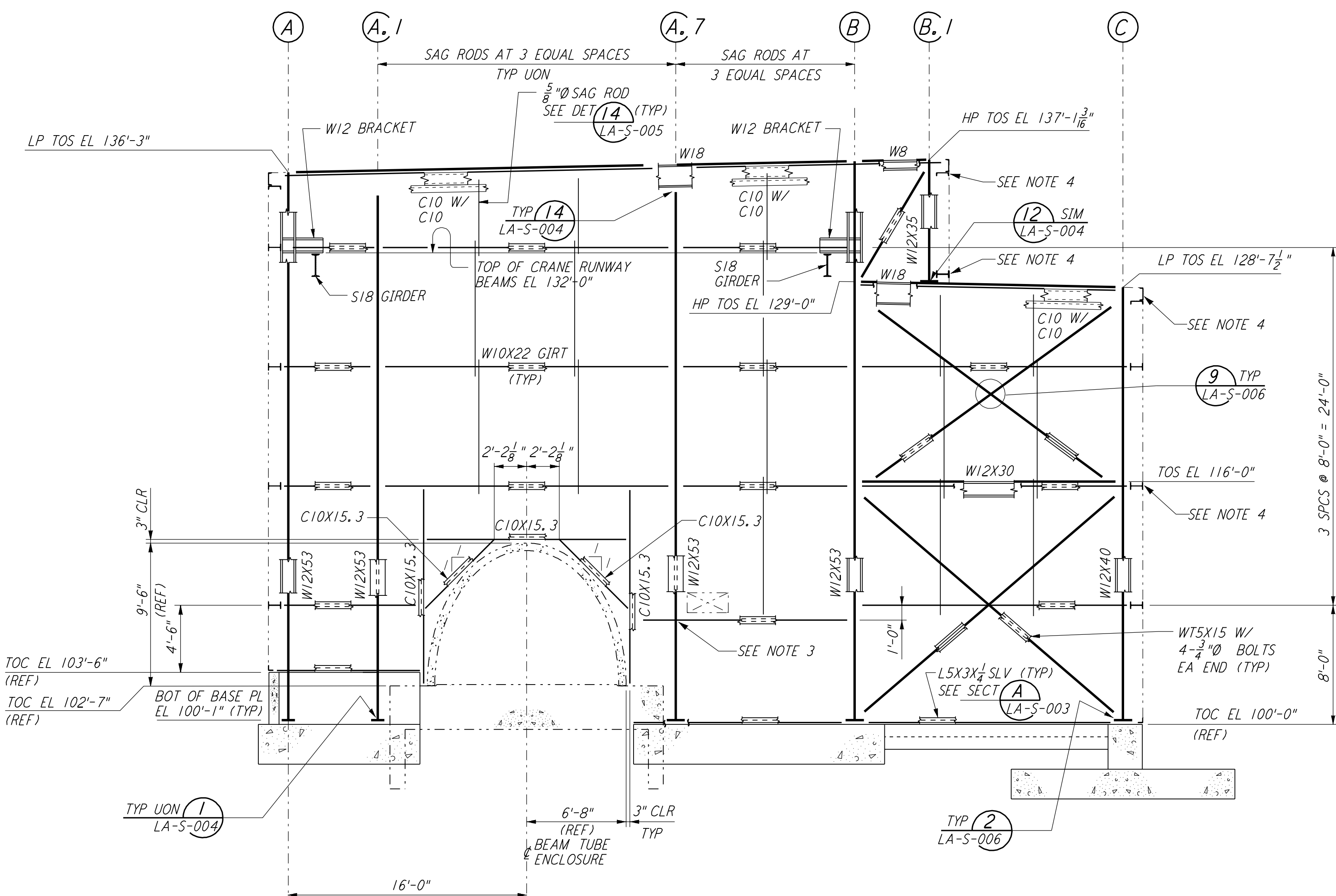
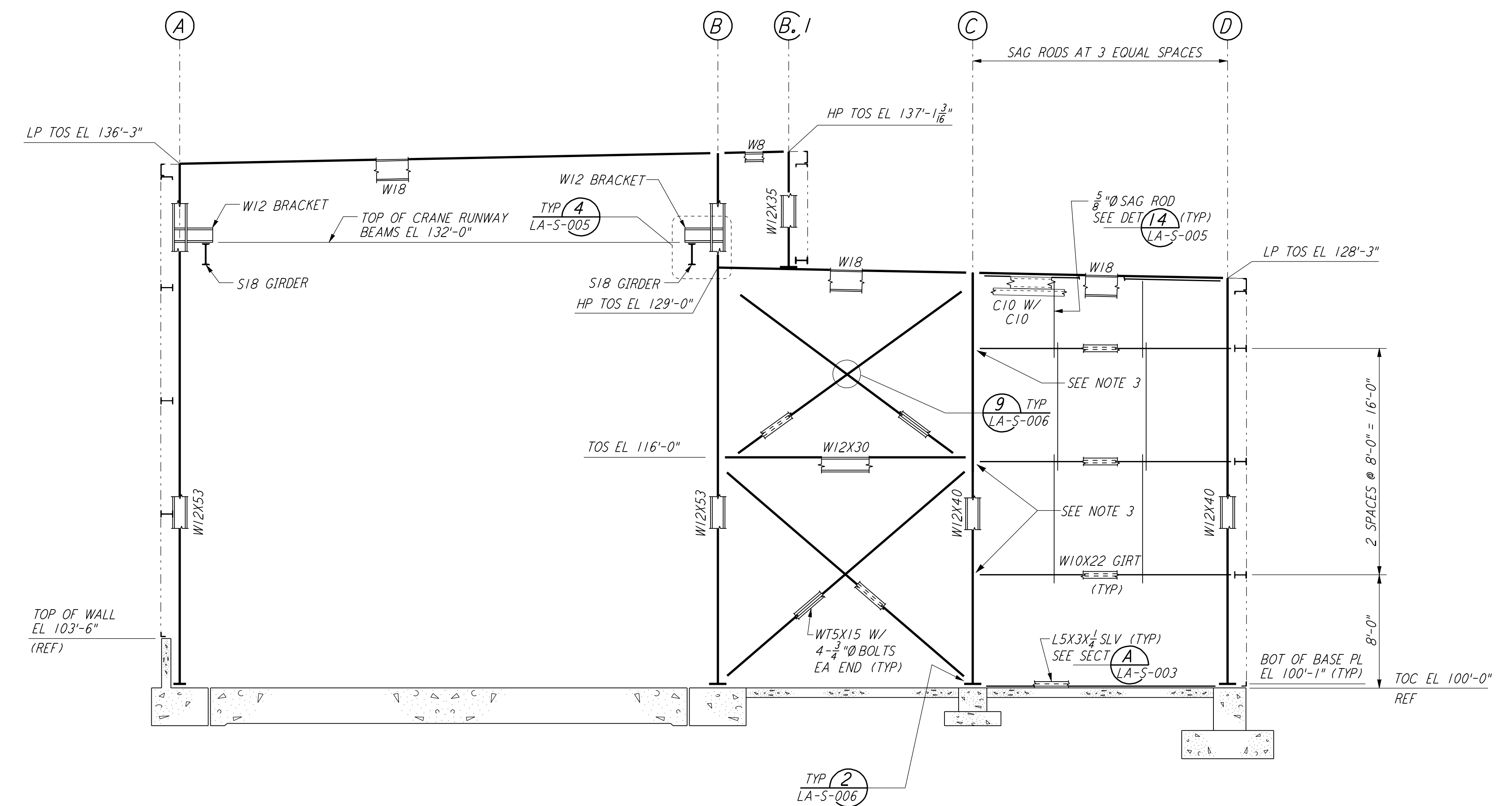


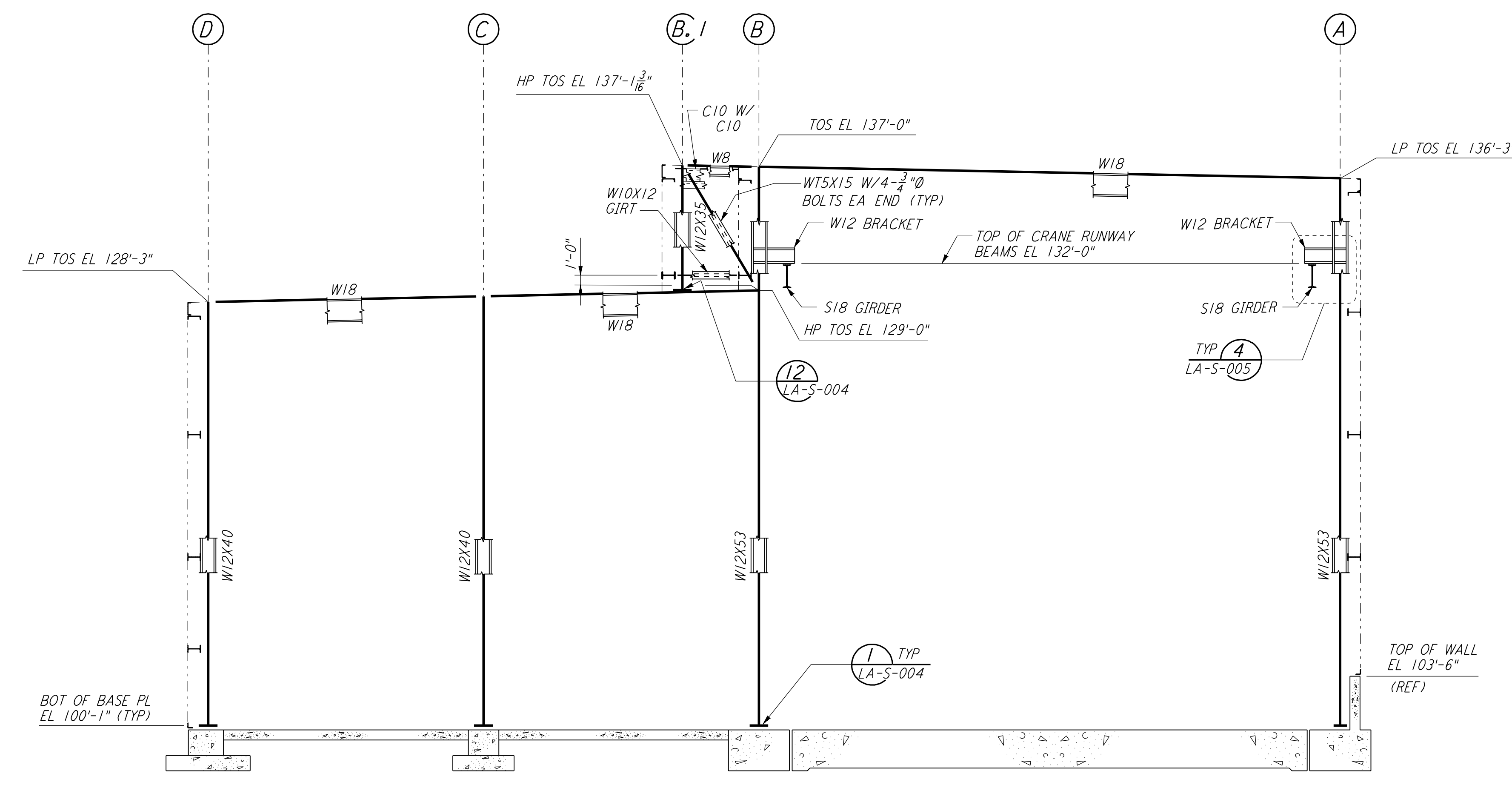
This document and the design it covers are the property of PARSONS. They are loaned only with the borrower's expressed written agreement that they will not be reproduced, copied, loaned, exhibited, or used in any other way, except by written consent from PARSONS to the borrower.



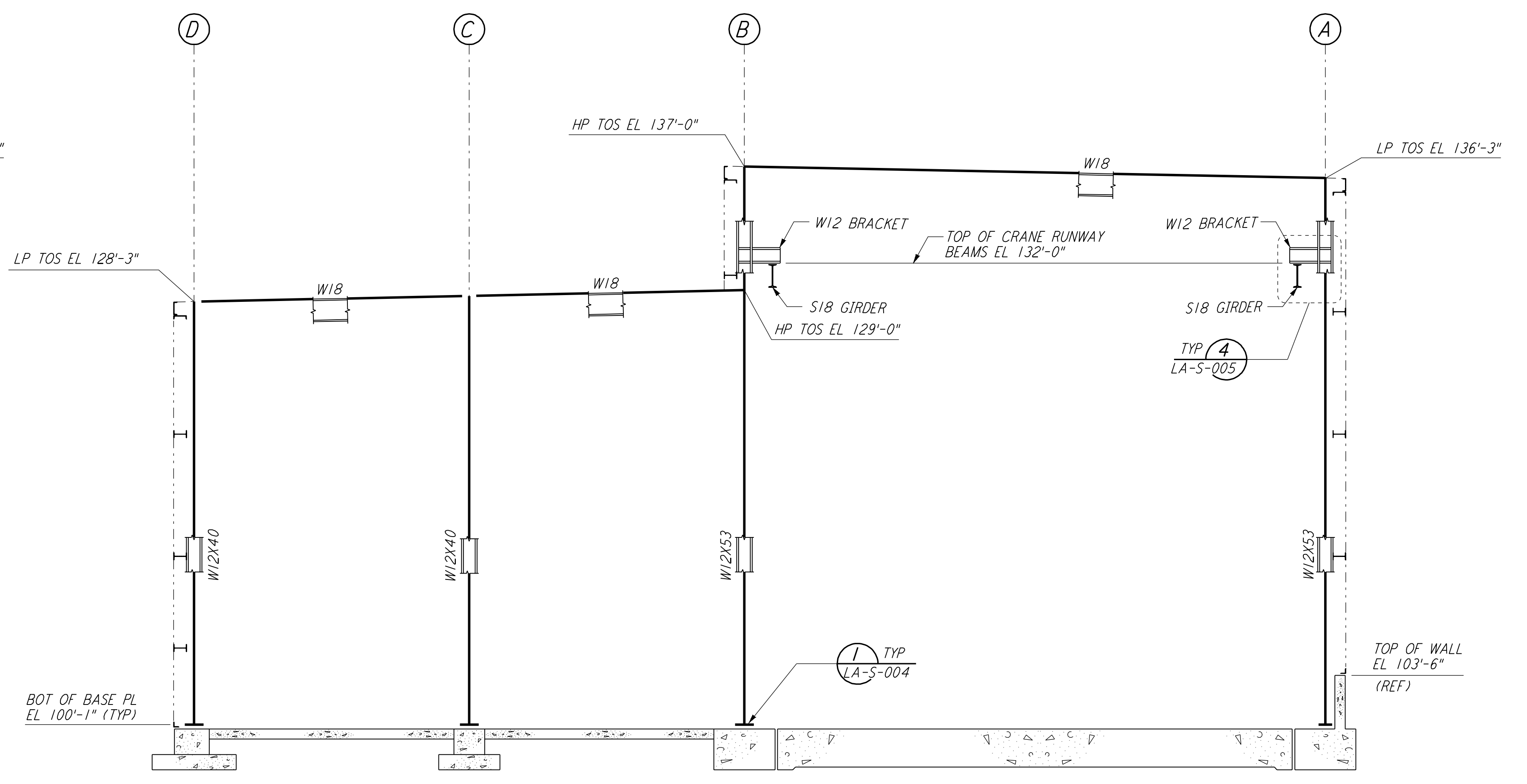
LOOKING SOUTH - FOR END STATION "B" ON ARM 1  
 LOOKING EAST - FOR END STATION "A" ON ARM 2  
 ELEVATION AT COLUMN LINE 1  
 $\frac{3}{16}'' = 1'-0''$



LOOKING SOUTH - FOR END STATION "B" ON ARM 1  
 LOOKING EAST - FOR END STATION "A" ON ARM 2  
 ELEVATION AT COLUMN LINE 2  
 $\frac{3}{16}'' = 1'-0''$

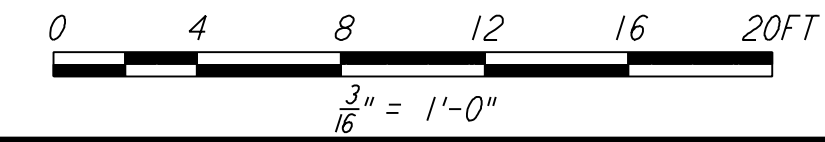


LOOKING NORTH - FOR END STATION "B" ON ARM 1  
 LOOKING WEST - FOR END STATION "A" ON ARM 2  
 ELEVATION AT COLUMN LINE 3  
 $\frac{3}{16}'' = 1'-0''$



LOOKING NORTH - FOR END STATION "B" ON ARM 1  
 LOOKING WEST - FOR END STATION "A" ON ARM 2  
 ELEVATION AT COLUMN LINE 4  
 $\frac{3}{16}'' = 1'-0''$

- NOTES:**
- FOR NOTES SEE DRAWING LA-S-107.
  - FOR VERTICAL BRACING CONNECTIONS, SEE DETAIL (5) LA-S-006
  - FIELD WELD BOTH LEGS L4X3/2 CONNECTORS TO C10 GIRTS.
  - ATTACH LADDER SUPPORTS PER STANDARD DETAIL AT GIRTS.



NO.	DATE	BY	CHKD	ENGR	PROJ	DESCRIPTION
1	08-07-98	WA				ISSUED FOR AS-BUILT

ISSUED FOR CONSTRUCTION			
DRAWN	MCS	11-15-96	
CHECKED	DDM	11-15-96	
ENGINEER	BP	11-15-96	
PROJ	TDM	11-15-96	

**AS-BUILT DRAWINGS**



LASER INTERFEROMETER GRAVITATIONAL-WAVE OBSERVATORY  
 SITE NO. 2 - LIVINGSTON, LOUISIANA

**STRUCTURAL END STATIONS "A" & "B" FRAMING ELEVATIONS SHEET 1**

SCALE: AS NOTED  
 CONTRACT NUMBER: PP150969  
 PROJECT NUMBER: 8094

SHEET NUMBER: **LA-S-305**

Wed Oct 7 16:52:11 1998 c:\p10\laser\lss305.dwg No. QUERUESVE082X.ST305.PDF