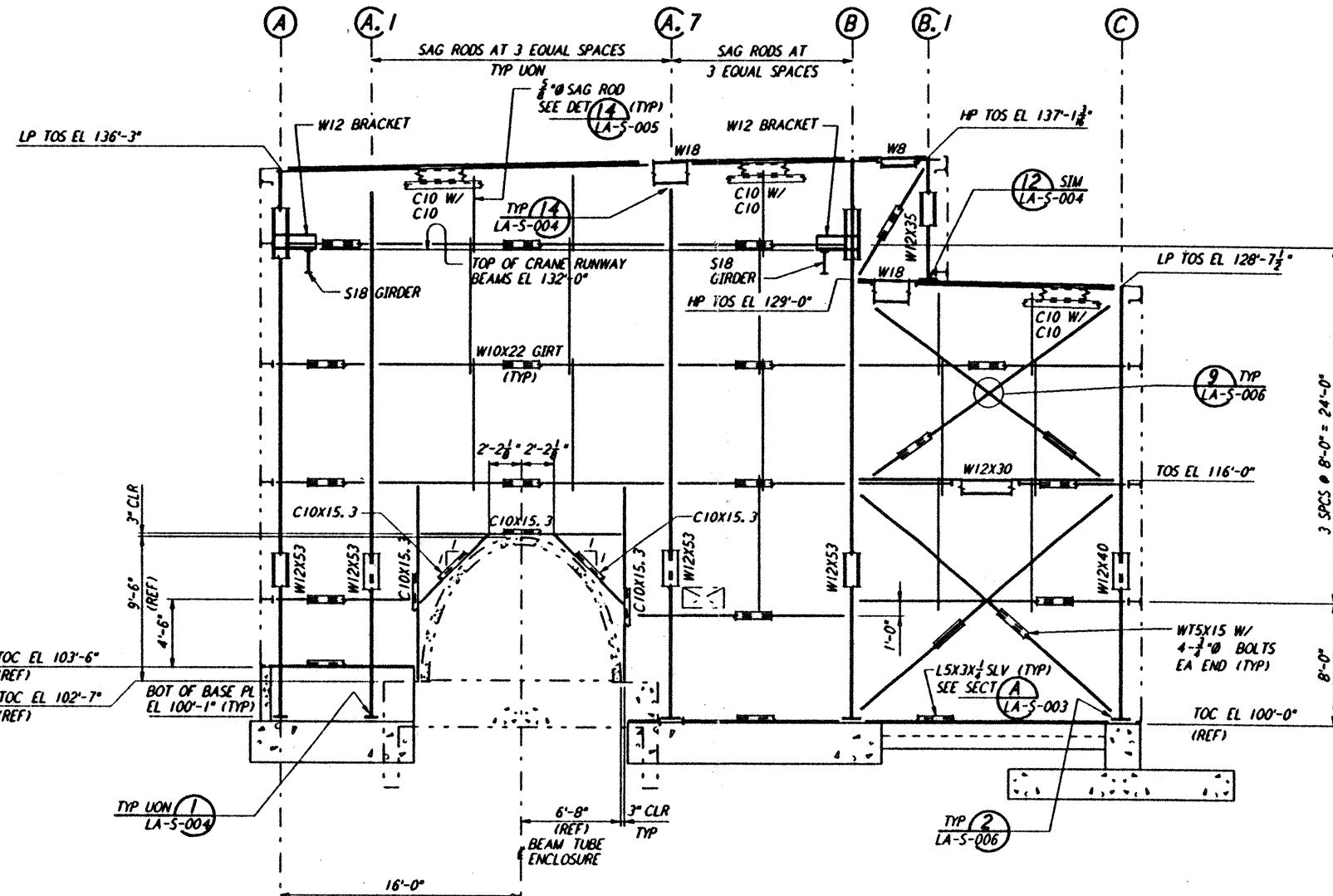
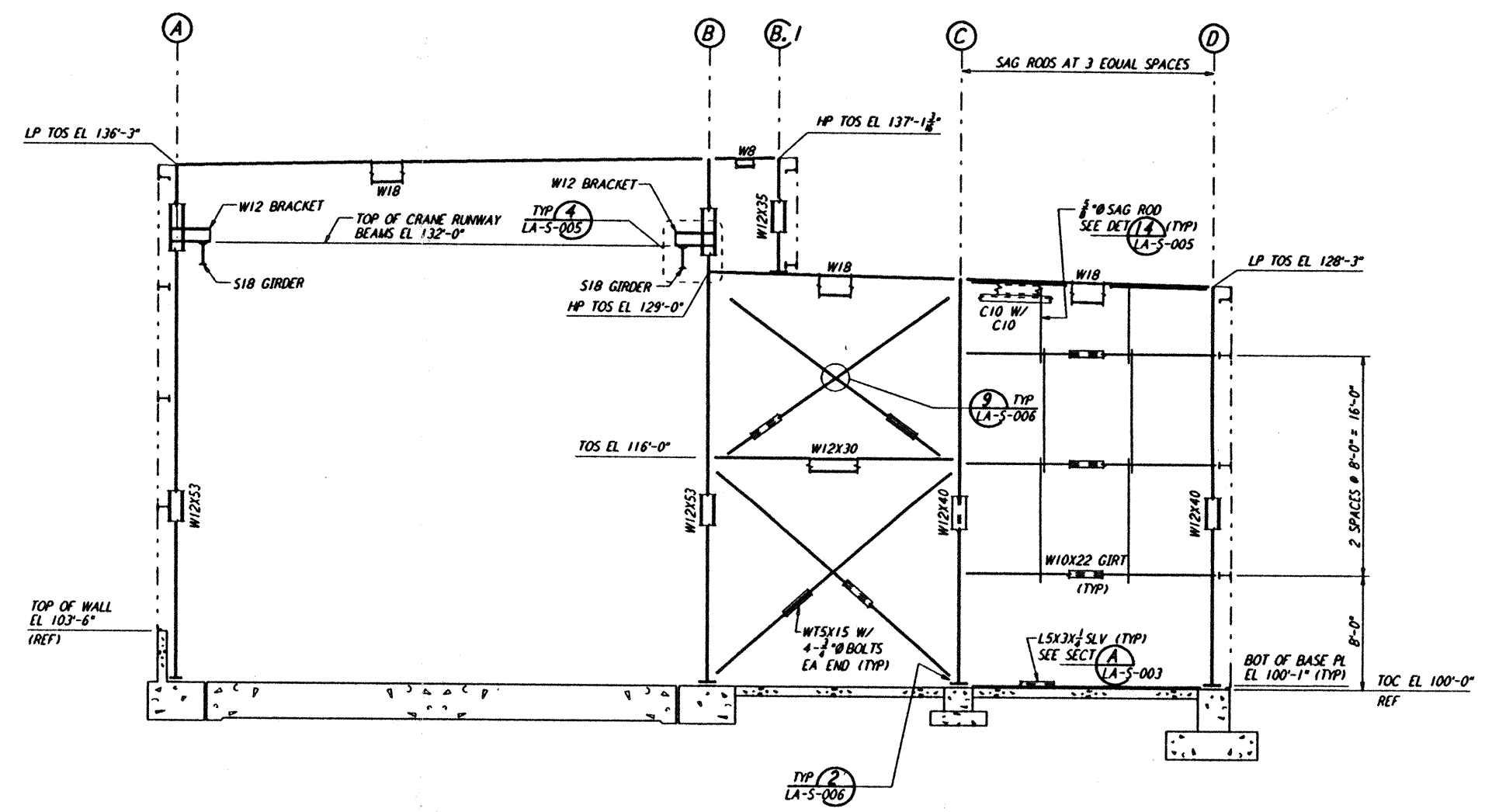


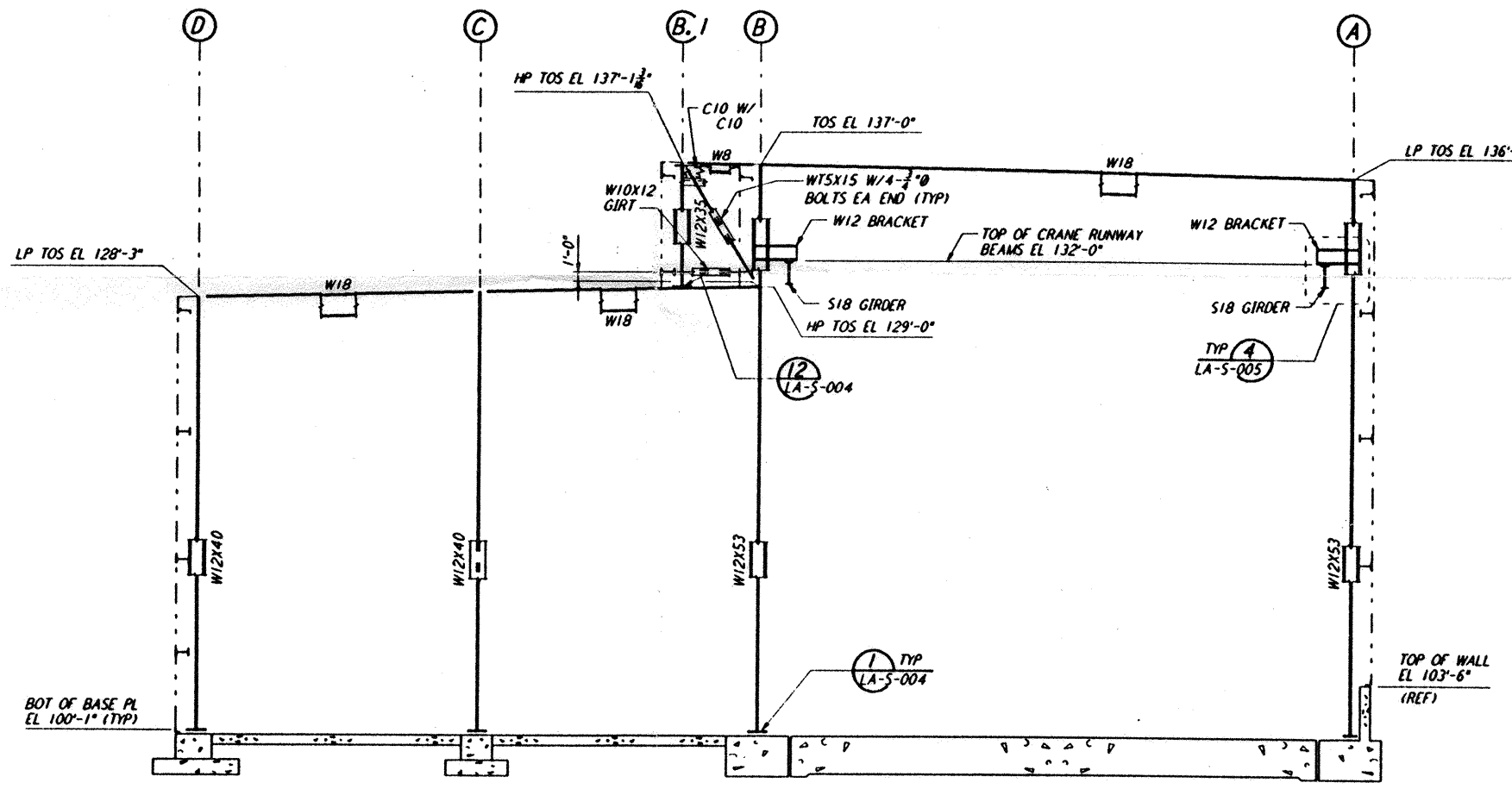
Mon Jul 22 18:31:41 1996 S3-V18B2 J:\PLOTS\QUEUES\18B2\ST305.PRF  
 This document and the design it covers are the property of PARSONS. They are loaned only with the borrower's expressed written agreement that they will not be reproduced, copied, loaned, exhibited, or used in any other way, except by written consent from PARSONS to the borrower.



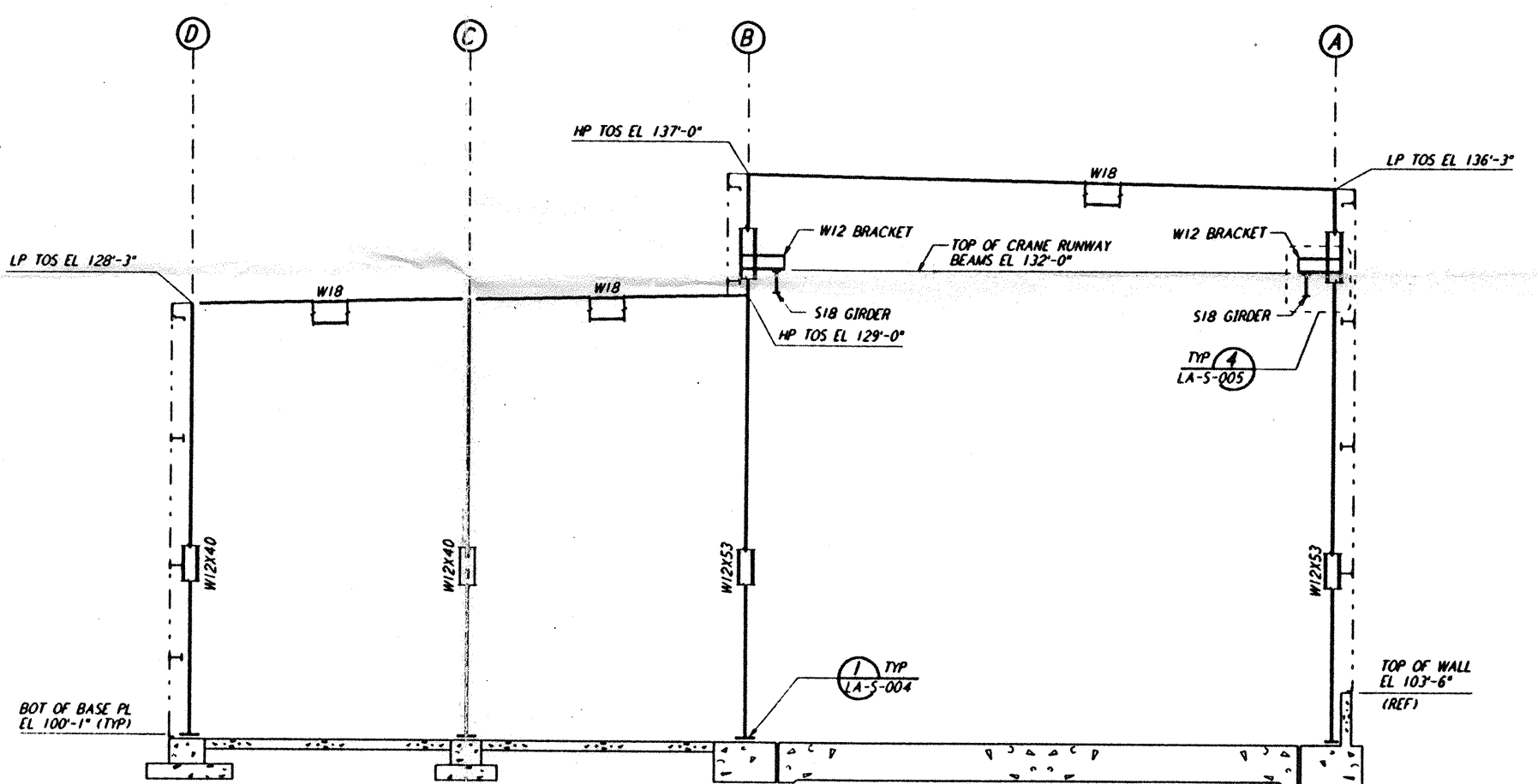
LOOKING SOUTH - FOR END STATION "B" ON ARM 1  
 LOOKING EAST - FOR END STATION "A" ON ARM 2  
 ELEVATION AT COLUMN LINE 1  
 $\frac{1}{2}'' = 1'-0''$



LOOKING SOUTH - FOR END STATION "B" ON ARM 1  
 LOOKING EAST - FOR END STATION "A" ON ARM 2  
 ELEVATION AT COLUMN LINE 2  
 $\frac{1}{2}'' = 1'-0''$

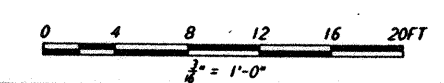


LOOKING NORTH - FOR END STATION "B" ON ARM 1  
 LOOKING WEST - FOR END STATION "A" ON ARM 2  
 ELEVATION AT COLUMN LINE 3  
 $\frac{1}{2}'' = 1'-0''$



LOOKING NORTH - FOR END STATION "B" ON ARM 1  
 LOOKING WEST - FOR END STATION "A" ON ARM 2  
 ELEVATION AT COLUMN LINE 4  
 $\frac{1}{2}'' = 1'-0''$

- NOTES:
- FOR NOTES SEE DRAWING LA-S-107.
  - FOR VERTICAL BRACING CONNECTIONS, SEE DETAIL (S) LA-S-006



NO.	DATE	BY	CHKD	ENGR	PROJ	DESCRIPTION
C	7-24-96	MCS	DP	DP	DP	ISSUED FOR BID
B	6-14-96	MCS	DDM	DP	DDM	FINAL DESIGN REVIEW
A	10-31-95					PRELIMINARY DESIGN REVIEW

DRAWN	MCS
CHECKED	
ENGINEER	
PROJ	

**PARSONS**  
 100 WEST WALNUT STREET  
 PASADENA, CALIFORNIA

**LIGO**  
 CALIFORNIA INSTITUTE OF TECHNOLOGY  
 MASSACHUSETTS INSTITUTE OF TECHNOLOGY

LASER INTERFEROMETER  
 GRAVITATIONAL-WAVE OBSERVATORY  
 SITE NO. 2 - LIVINGSTON, LOUISIANA  
 TITLE: STRUCTURAL END STATIONS "A" & "B" FRAMING ELEVATIONS SHEET 1  
 SCALE: AS NOTED  
 CONTRACT NUMBER: PPI50969  
 PROJECT NUMBER: 8094  
**LA-S-305**