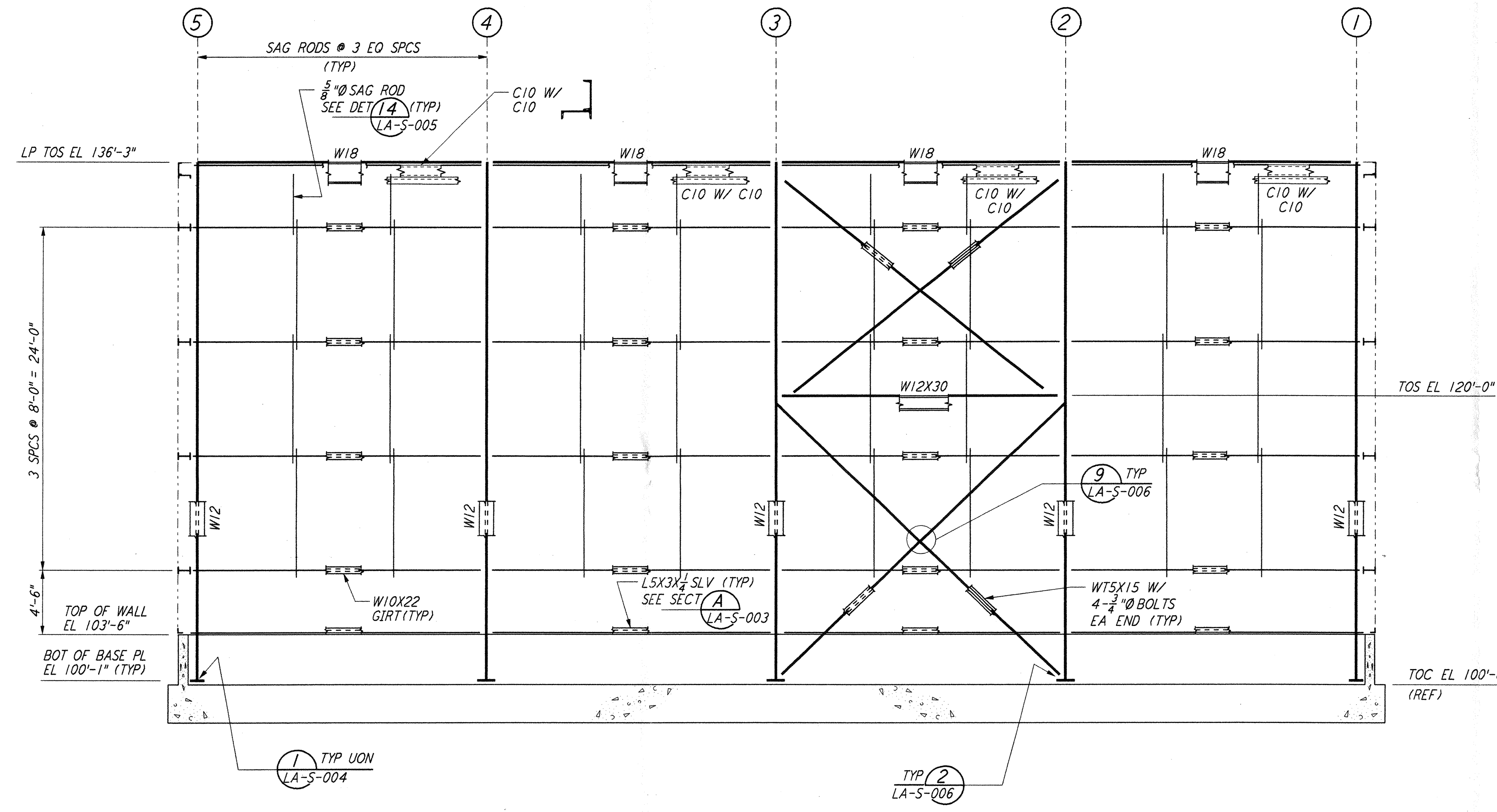
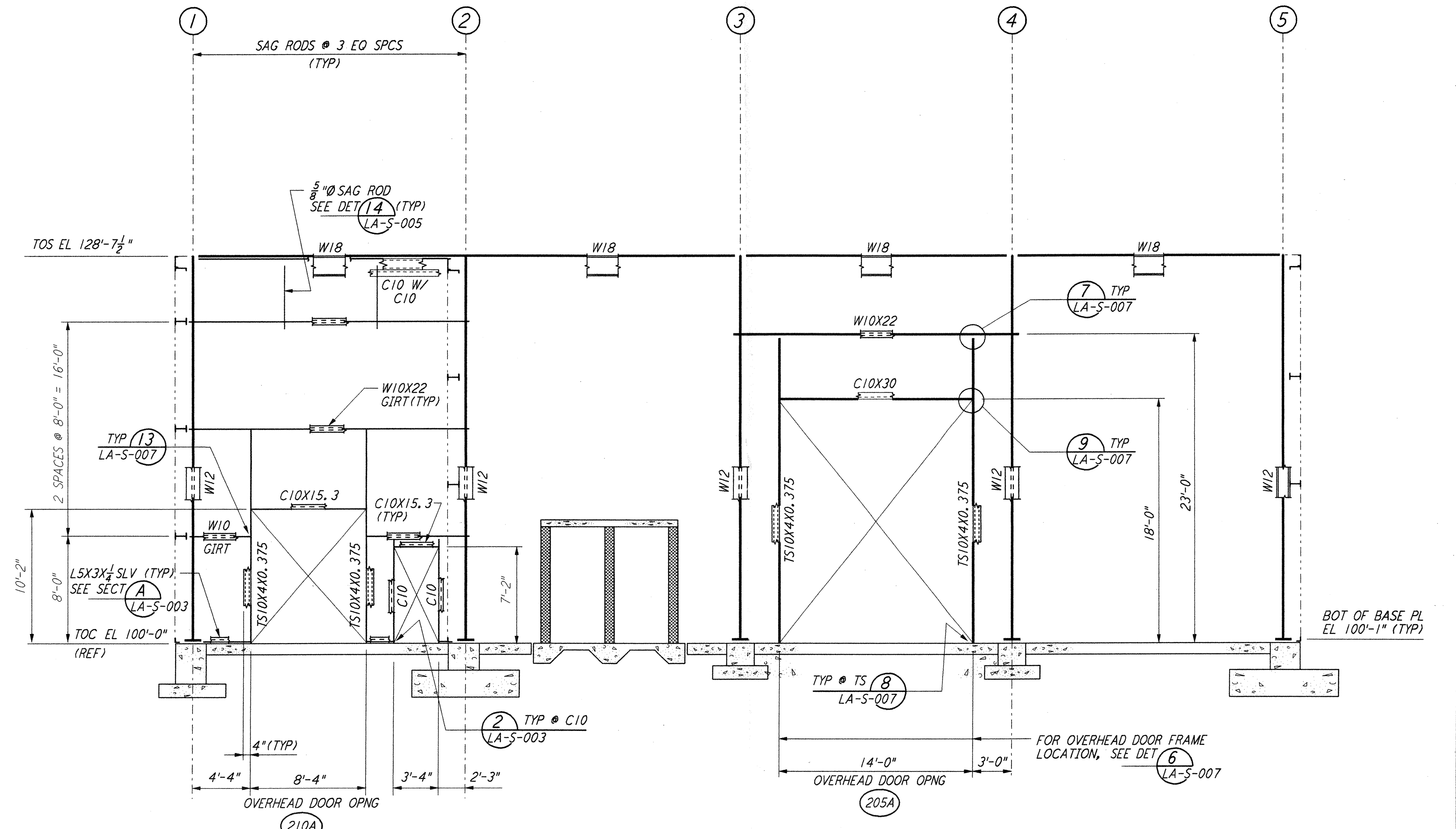


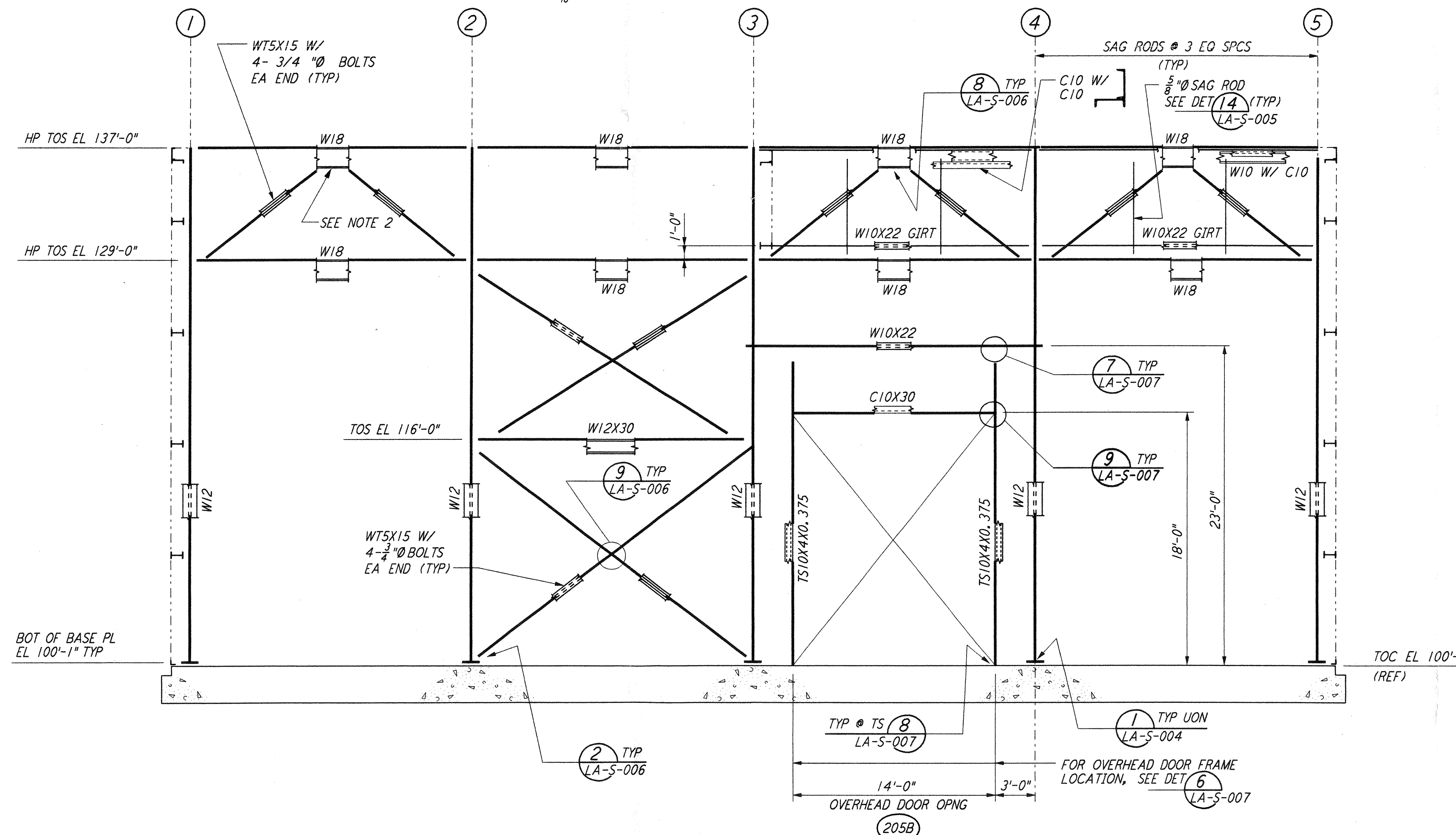
This document and the design it covers are the property of PARSONS. They are loaned only with the borrower's expressed written agreement that they will not be reproduced, copied, loaned, exhibited, or used in any other way, except by written consent from PARSONS to the borrower.



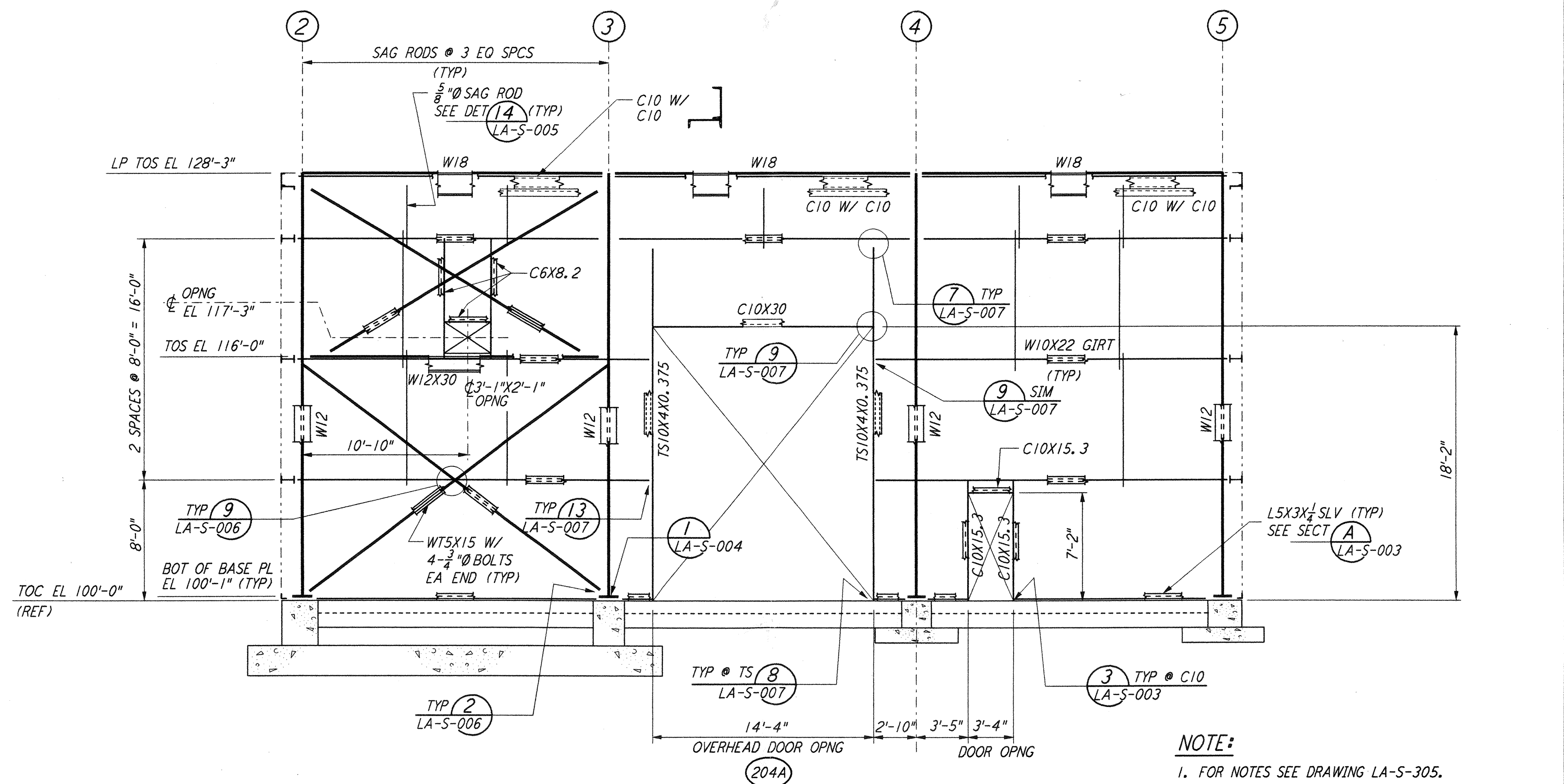
LOOKING EAST - FOR END STATION "B" ON ARM 1
 LOOKING SOUTH - FOR END STATION "A" ON ARM 2
 ELEVATION AT COLUMN LINE A
 $\frac{3}{8}'' = 1'-0''$



LOOKING WEST - FOR END STATION "B" ON ARM 1
 LOOKING NORTH - FOR END STATION "A" ON ARM 2
 ELEVATION AT COLUMN LINE C
 $\frac{3}{8}'' = 1'-0''$

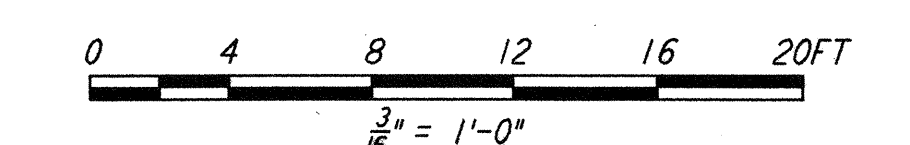


LOOKING WEST - FOR END STATION "B" ON ARM 1
 LOOKING NORTH - FOR END STATION "A" ON ARM 2
 ELEVATION AT COLUMN LINE B
 $\frac{3}{8}'' = 1'-0''$



LOOKING WEST - FOR END STATION "B" ON ARM 1
 LOOKING NORTH - FOR END STATION "A" ON ARM 2
 ELEVATION AT COLUMN LINE D
 $\frac{3}{8}'' = 1'-0''$

- NOTE:
- FOR NOTES SEE DRAWING LA-S-305.
 - NOTCH 2 1/2" FROM BOTTOM OF VERTICAL BRACING GUSSET PLATE TO CLEAR DUCT.



LIGO-D960950-01-0

NO.	DATE	BY	CHKD	ENGR	PROJ	DESCRIPTION
1	08-07-98	WA	GM	GM	WU	ISSUED FOR AS-BUILT

ISSUED FOR CONSTRUCTION		
DRAWN	MCS	11-15-96
CHECKED	DDM	11-15-96
ENGINEER	BP	11-15-96
PROJ	TDM	11-15-96

AS-BUILT DRAWINGS

PARSONS

100 WEST WALNUT STREET
PASADENA, CALIFORNIA

LIGO

CALIFORNIA INSTITUTE OF TECHNOLOGY
MASSACHUSETTS INSTITUTE OF TECHNOLOGY

LASER INTERFEROMETER
GRAVITATIONAL-WAVE OBSERVATORY
SITE NO. 2 - LIVINGSTON, LOUISIANA

STRUCUTURAL
END STATIONS "A" & "B"
FRAMING ELEVATIONS
SHEET 2

AS NOTED PPI50969 8094

LA-S-306