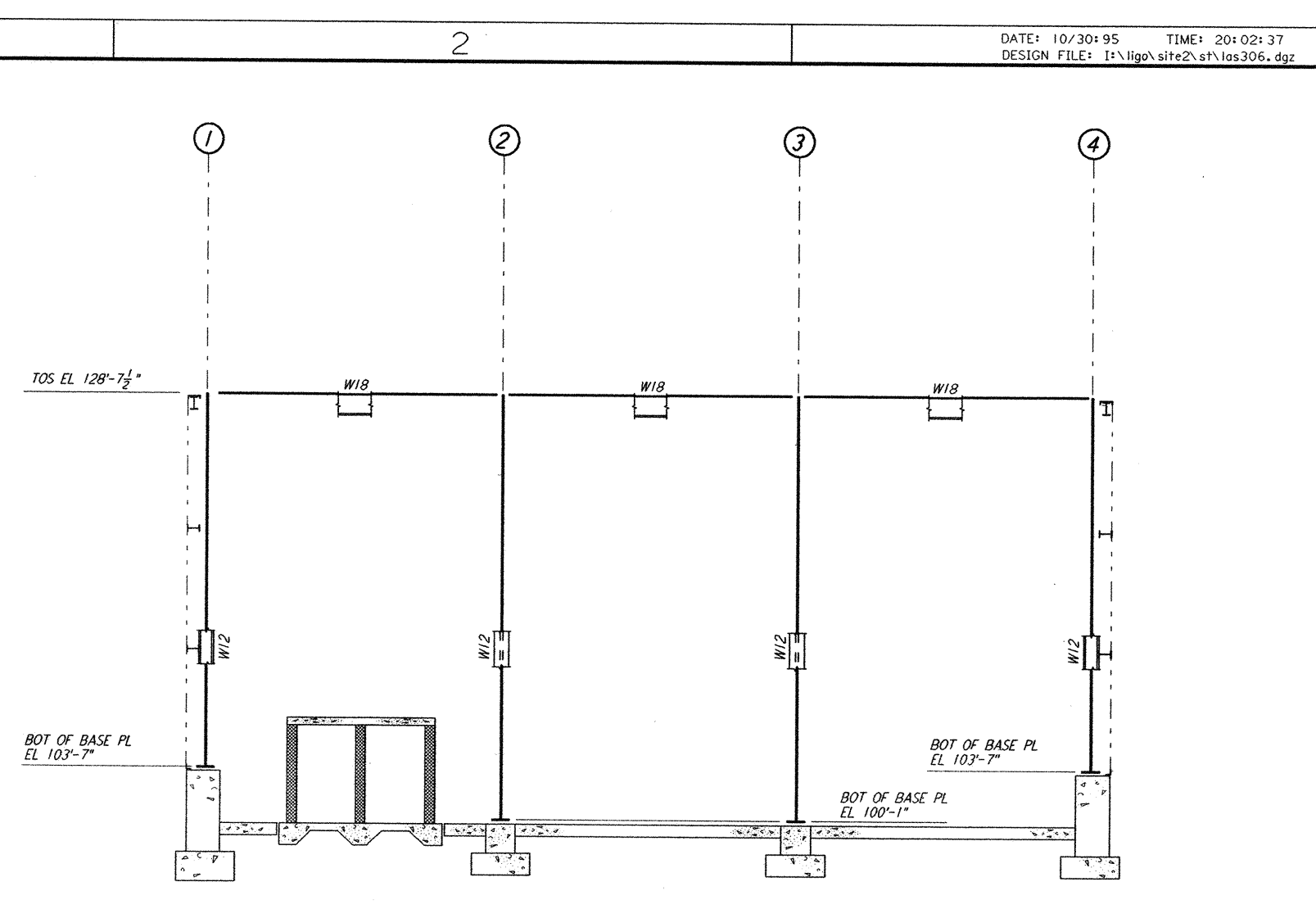
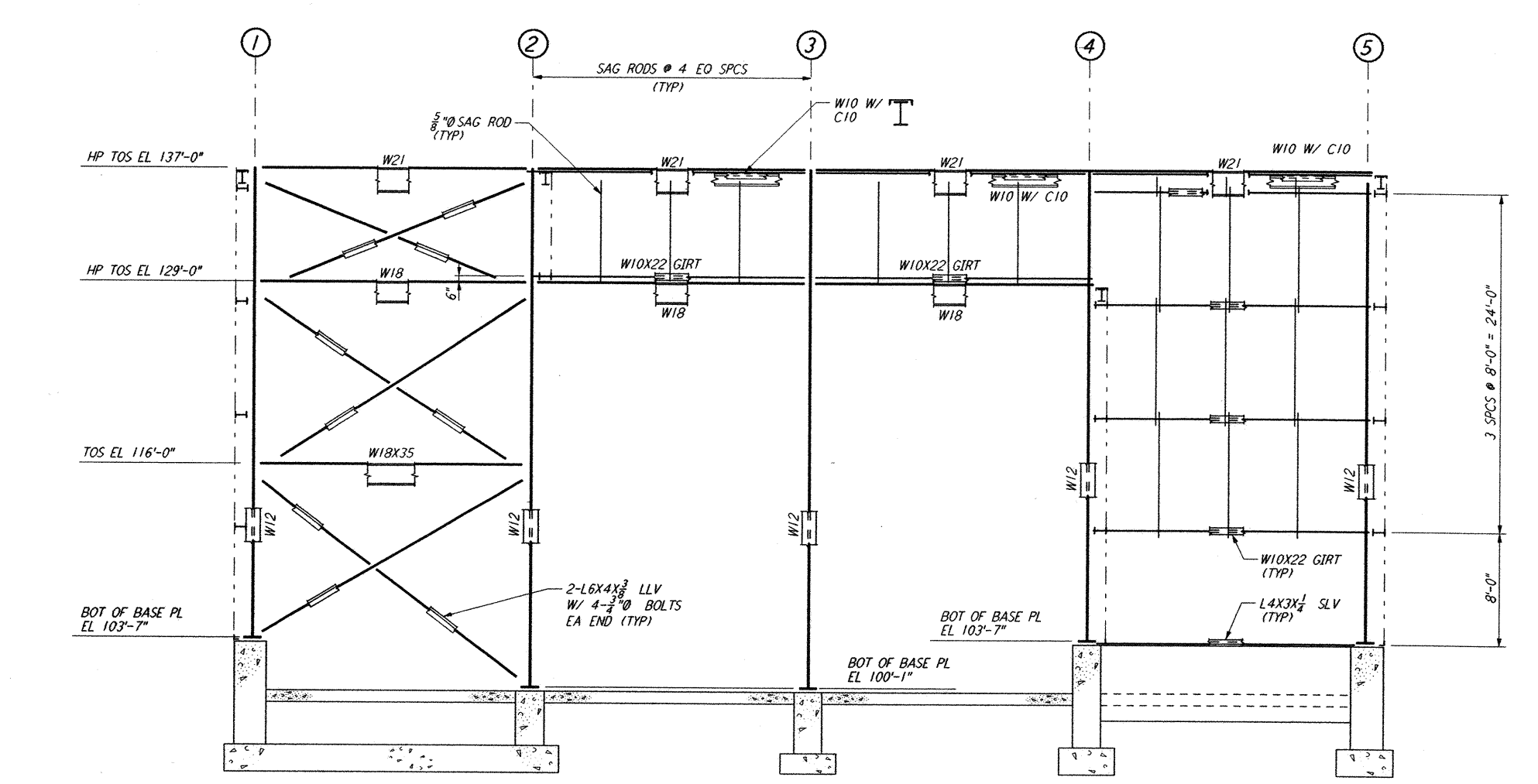


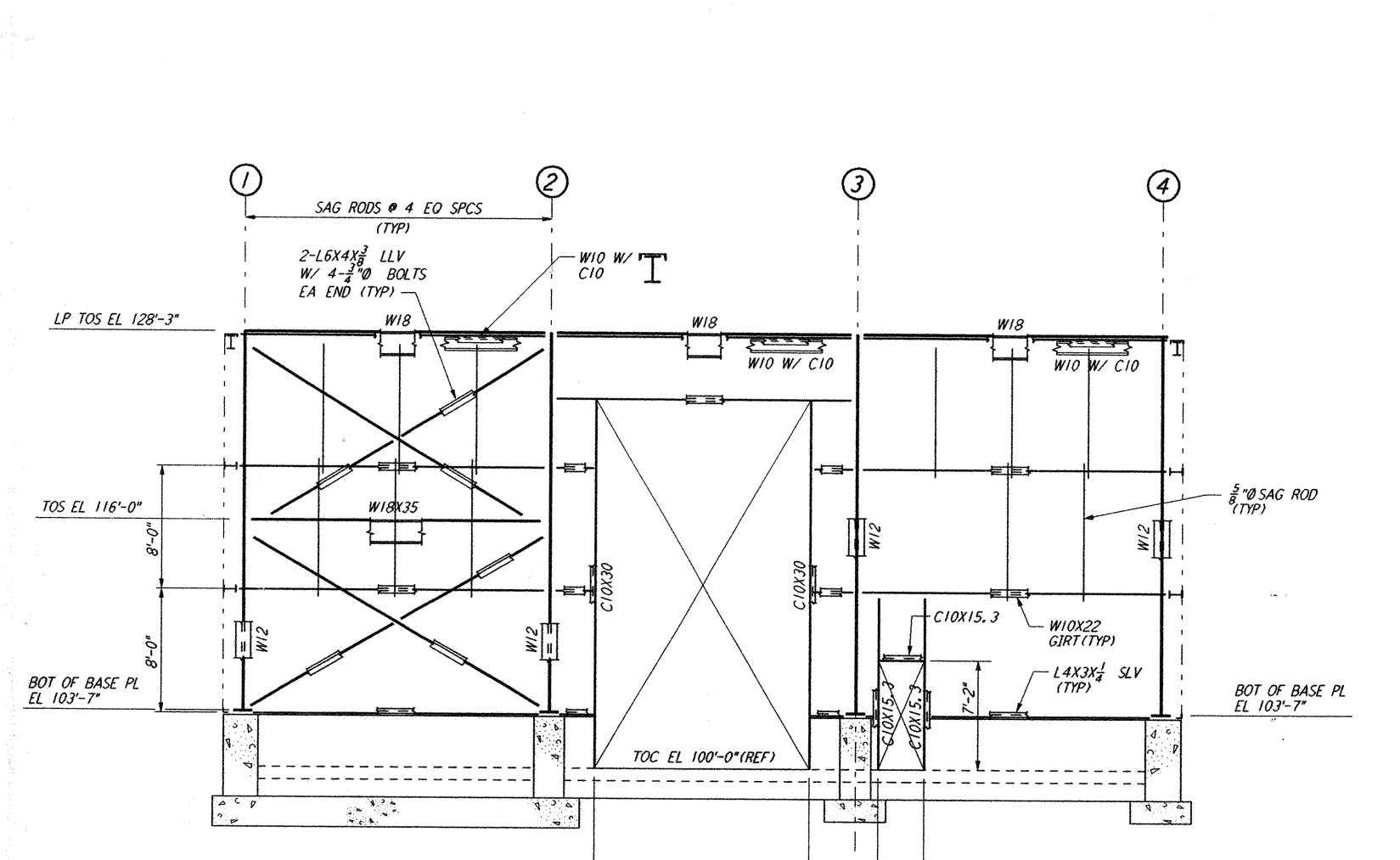
ELEVATION AT COLUMN LINE A
 $\frac{3}{16}'' = 1'-0''$



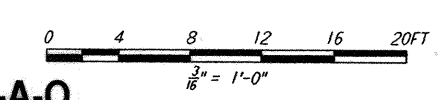
ELEVATION AT COLUMN LINE C
 $\frac{3}{16}'' = 1'-0''$



ELEVATION AT COLUMN LINE B
 $\frac{3}{16}'' = 1'-0''$



ELEVATION AT COLUMN LINE D
 $\frac{3}{16}'' = 1'-0''$



LIGO-D960950-A-O

NO.	DATE	APRD BY	DESCRIPTION OF REVISION
9			
8			
7			
6			
5			
4			
3			
2			
1			

NO.	DATE	APRD BY	ISSUED FOR
J			
H			
C			
T			
F			
E			
D			
C			
B			
A	10-31-95	TDM	PRELIMINARY DESIGN REVIEW

DATE	10-31-95
DRAWN	MCS
CHECKED	
ENGINEER	
PROJ MGR	

PARSONS
 100 WEST WALNUT STREET
 PASADENA, CALIFORNIA

LIGO
 CALIFORNIA INSTITUTE OF TECHNOLOGY
 MASSACHUSETTS INSTITUTE OF TECHNOLOGY

LASER INTERFEROMETER
 GRAVITATIONAL-WAVE OBSERVATORY
 SITE NO. 2 - LIVINGSTON, LOUISIANA

TITLE	END STATION FRAMING ELEVATIONS SHEET 2	SCALE	AS NOTED	CONTRACT NUMBER	PP150969	PROJECT NUMBER	8094
SHEET NUMBER	LA-S-306	REVISIONS					

This document and the design it covers are the property of PARSONS. They are loaned only with the borrower's expressed written agreement that they will not be reproduced, copied, loaned, exhibited, or used in any other way, except by written consent from PARSONS to the borrower.

Mon Oct 30 20:01:00 1995 s3-v18b2 J:\PLOTS\QUEUES\18B2\ST306.PR