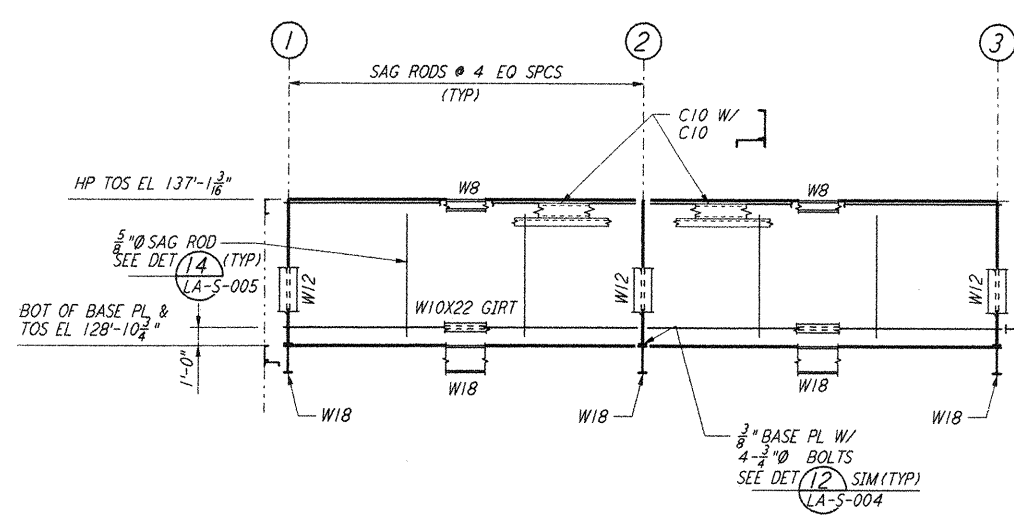
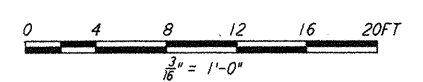


LOOKING NORTH - FOR END STATION "B" ON ARM 1
 LOOKING WEST - FOR END STATION "A" ON ARM 2
 ELEVATION AT COLUMN LINE 5
 $\frac{3}{8}'' = 1'-0''$



LOOKING WEST - FOR END STATION "B" ON ARM 1
 LOOKING NORTH - FOR END STATION "A" ON ARM 2
 ELEVATION AT COLUMN LINE B. 1
 $\frac{3}{8}'' = 1'-0''$

NOTE:
 FOR NOTES SEE DRAWING LA-S-305.



LIGO-D960951-01-0

NO.	DATE	BY	CHKD	ENGR	PROJ	DESCRIPTION
1	08-07-98	WA				ISSUED FOR AS-BUILT

ISSUED FOR CONSTRUCTION
 DRAWN MCS 11-15-96
 CHECKED DDM 11-15-96
 ENGINEER BP 11-15-96
 PROJ TDM 11-15-96

AS-BUILT DRAWINGS

PARSONS
 100 WEST WALNUT STREET
 PASADENA, CALIFORNIA

LIGO
 CALIFORNIA INSTITUTE OF TECHNOLOGY
 MASSACHUSETTS INSTITUTE OF TECHNOLOGY

LASER INTERFEROMETER
 GRAVITATIONAL-WAVE OBSERVATORY
 SITE NO. 2 - LIVINGSTON, LOUISIANA

TITLE: **STRUCTURAL END STATIONS "A" & "B" FRAMING ELEVATIONS SHEET 3**

SCALE: AS NOTED
 CONTRACT NUMBER: PPI50969
 PROJECT NUMBER: 8094

SHEET NUMBER: **LA-S-307**

This document and the design it covers are the property of PARSONS. They are loaned only with the borrower's expressed written agreement that they will not be reproduced, copied, loaned, exhibited, or used in any other way, except by written consent from PARSONS to the borrower.

This document and the design it covers are the property of PARSONS. They are loaned only with the borrower's expressed written agreement that they will not be reproduced, copied, loaned, exhibited, or used in any other way, except by written consent from PARSONS to the borrower.

The Aug 13 13:19:38 1998 C:\PLOT\QUE\53\138820CF 52885 K:\V9882\st307.dwg LIGOLAF.BDR