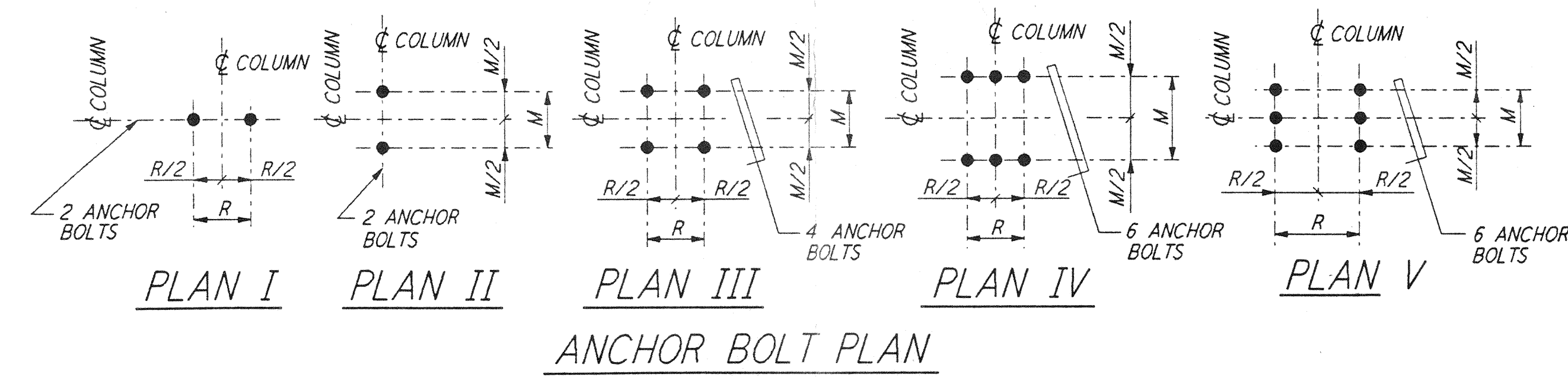
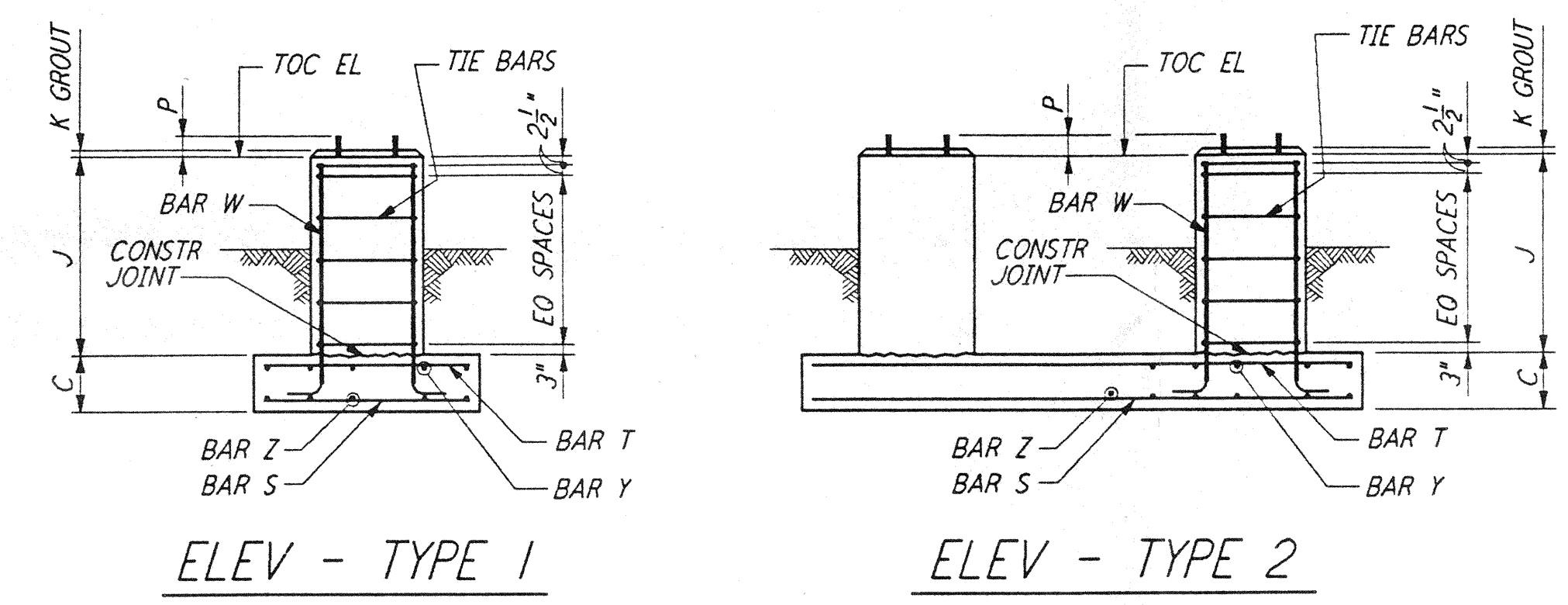


**TIE REINFORCEMENT NOTES:**  
 1A. THESE BARS MUST BE TIED AS SHOWN BY DASHED LINES WHEN X DISTANCE IS OVER 6 INCHES.  
 2A. THESE BARS NEED NOT BE TIED WHEN X DISTANCE IS 6 INCHES OR LESS.  
 3A. ALTERNATE 90° HOOKS IN COLUMNS.

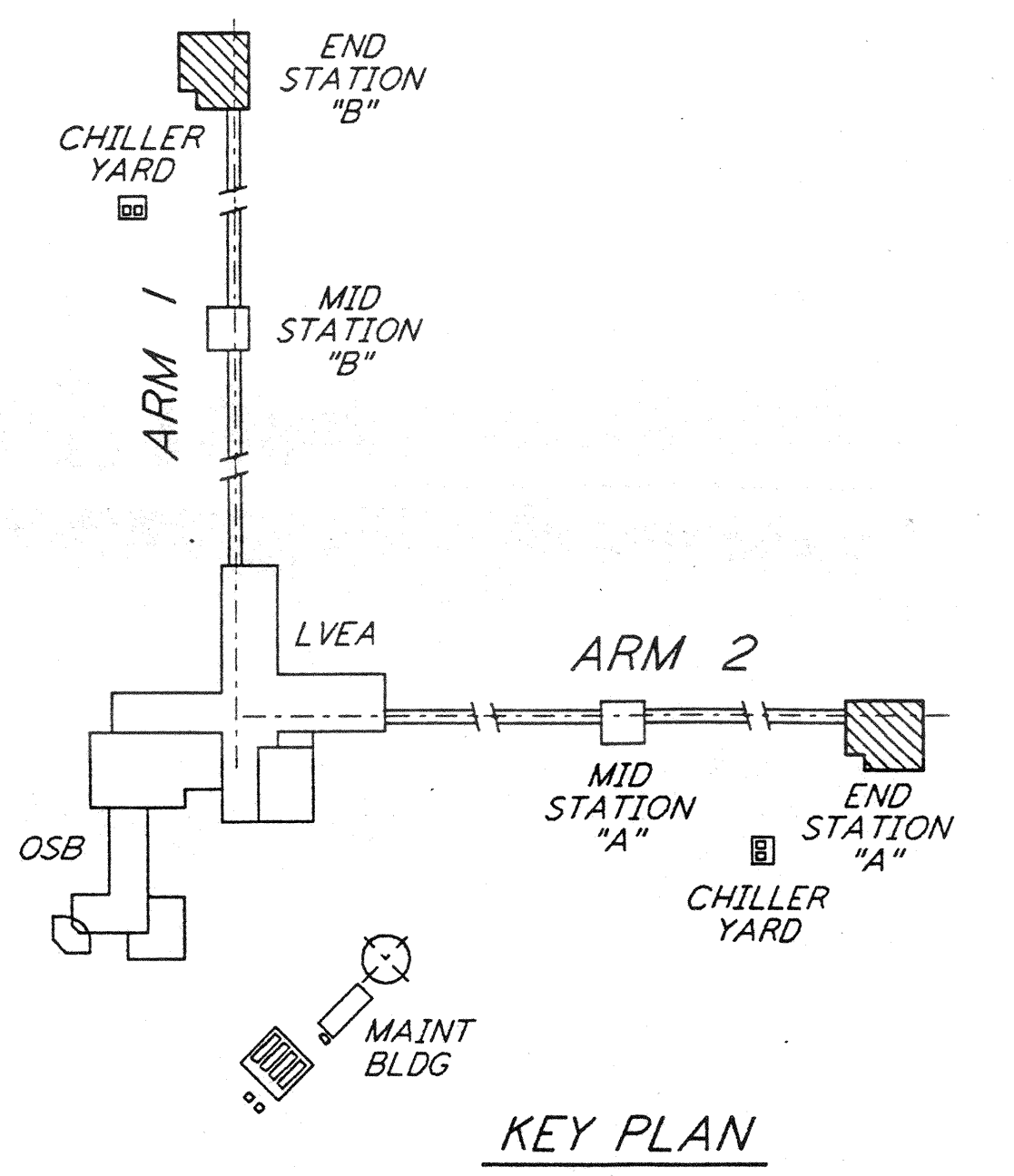
- NOTES:**
- CONSTRUCTION SHALL COMPLY WITH ALL THE REQUIREMENTS OF THE GENERAL NOTES ON DRAWING LA-S-001.
  - THE BAR SPACING IS BASED ON CENTER TO CENTER OF TIE SET.
  - FOR ANCHOR BOLT DETAILS SEE DRAWING LA-S-003.
  - FOUNDATION SCHEDULE SHOWN IS FOR ONE (1) BUILDING ONLY. TWO (2) BUILDINGS REQUIRED.



not be reproduced, copied, loaned, exhibited, or used in any other way, except by written consent from PARSONS to the borrower.

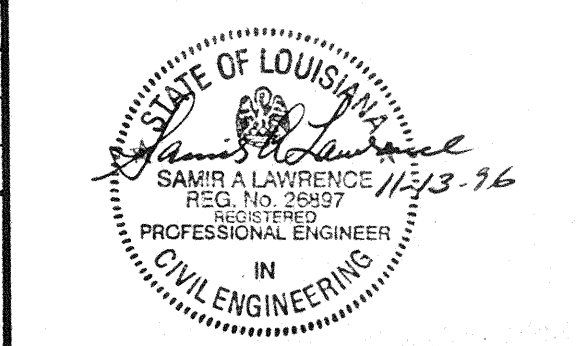
This document and the design it covers are the property of PARSONS. They are loaned only with the borrower's expressed written agreement that they will

NO. OF FDN. REQD.	FOUNDATION LOCATION	TOP OF CONC. EL.	FOUNDATION TYPE		DIMENSIONS														ANCHOR BOLTS PER PIER					REINFORCING PER FOUNDATION										CONC. CY	FDN. LOC. PLAN	REMARKS						
			PLAN	ELEV.	A	B	C	D	F	G	H	J	K	M	R	N	ANCHOR BOLT PLAN	TYPE	NO. PER PIER	SIZE Ø	L	P	BAR S NO.	BAR S SIZE	BAR Z NO.	BAR Z SIZE	BAR T NO.	BAR T SIZE	BAR Y NO.	BAR Y SIZE	BAR W NO.	BAR W SIZE	TIE BAR TYPE				TIE BAR SIZE	TIE BAR NO. RECD.				
2	C3, C4	100'-0"	A	1	3'-6"	3'-6"	1'-0"	10"	10"	10"	10"	1'-8"	1"	7"	7"	—	III	2	4	1"	1'-4"	4"	5	#4	5	#4	—	—	—	—	8	#5	B	#4	4	1.3	LA-S-301					
1	D4	100'-0"	A	1	5'-0"	5'-0"	1'-0"	10"	10"	1'-3 1/2"	10"	1'-8"	1"	7"	7"	—	III	2	4	1"	1'-4"	4"	7	#4	7	#4	7	#4	7	#4	8	#6	B	#4	4	1.2	LA-S-301					
1	D5	100'-0"	A	1	5'-0"	5'-0"	1'-0"	10"	10"	1'-3 1/2"	10"	1'-8"	1"	7"	7"	—	III	2	4	1"	1'-4"	4"	7	#4	7	#4	7	#4	7	#4	8	#6	B	#4	4	1.2	LA-S-301					
2	C1, C2	100'-0"	A	1	15'-0"	8'-0"	2'-0"	1'-3 1/2"	12"	1'-3 1/2"	12"	4'-0"	1"	7"	7"	—	III	2	4	1"	1'-4"	4"	18	#6	10	#6	18	#6	10	#6	8	#7	B	#4	6	9.7	LA-S-301					
1	C5	100'-0"	A	1	15'-0"	8'-0"	2'-0"	12"	1'-3 1/2"	12"	12"	4'-0"	1"	7"	7"	—	III	2	4	1"	1'-4"	4"	18	#6	10	#6	18	#6	10	#6	8	#6	B	#4	6	9.7	LA-S-301					
1	D2	100'-0"	B	2	6'-0"	26'-0"	2'-0"	1'-3 1/2"	12"	1'-3 1/2"	12"	1'-8"	1"	7"	7"	20'-0"	III	2	4	1"	1'-4"	4"	8	#6	31	#6	8	#6	31	#6	8	#6	B	#4	4	12.2	LA-S-301					
—	A2, A3, B1, B2, B3, B5	100'-0"	—	—	—	—	—	—	—	—	—	—	1"	7"	7"	—	III	2	4	1"	1'-4"	4"	—	—	—	—	—	—	—	—	—	—	—	—	—	—	—	LA-S-301	FOR ANCHOR BOLTS ONLY			
—	A1, A4, A5, B4	100'-0"	—	—	—	—	—	—	—	—	—	—	1"	7"	7"	—	III	2	4	1"	1'-4"	4"	—	—	—	—	—	—	—	—	—	—	—	—	—	—	—	—	—	LA-S-301	FOR ANCHOR BOLTS ONLY	
—	A.1-1, A.1-5, A.7-1, A.7-5	100'-0"	—	—	—	—	—	—	—	—	—	—	1"	7"	7"	—	III	2	4	1"	1'-4"	4"	—	—	—	—	—	—	—	—	—	—	—	—	—	—	—	—	—	—	LA-S-301	FOR ANCHOR BOLTS ONLY



DRAWING NO.	DESCRIPTION	NO.	DATE	BY	CHKD	ENGR	PROJ	DESCRIPTION

ISSUED FOR CONSTRUCTION  
 DRAWN: MCS 11-15-96  
 CHECKED: [Signature] 11-15-96  
 ENGINEER: [Signature] 11-15-96  
 PROJ: [Signature] 11/15/96



**PARSONS**  
 100 WEST WALNUT STREET  
 PASADENA, CALIFORNIA

**LIGO**  
 CALIFORNIA INSTITUTE OF TECHNOLOGY  
 MASSACHUSETTS INSTITUTE OF TECHNOLOGY

LASER INTERFEROMETER GRAVITATIONAL-WAVE OBSERVATORY SITE NO. 2 - LIVINGSTON, LOUISIANA			
TITLE	SCALE	CONTRACT NUMBER	PROJECT NUMBER
STRUCTURAL END STATIONS 'A' & 'B' FOUNDATION SCHEDULE AND DETAILS	NONE	PPI50969	8094
SHEET NUMBER		REVISIONS	
<b>LA-S-401</b>			