

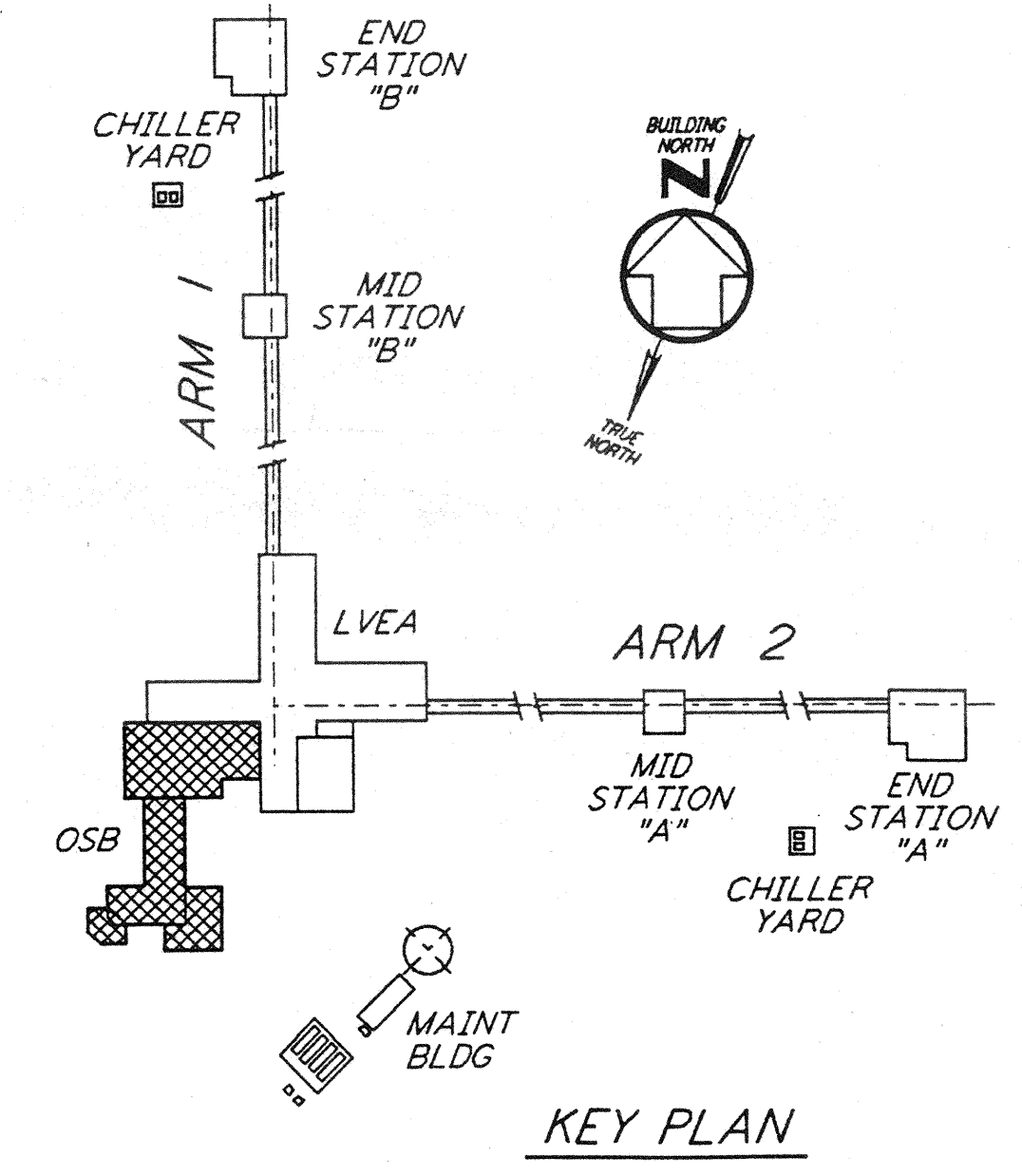
**NOTES:**

- CONSTRUCTION SHALL COMPLY WITH ALL THE REQUIREMENTS OF THE GENERAL NOTES ON DRAWING LA-S-001.
- THE BAR SPACING IS BASED ON CENTER TO CENTER OF TIE SET.
- FOR ANCHOR BOLT DETAILS SEE DRAWING LA-S-003.

not be reproduced, copied, loaned, exhibited, or used in any other way, except by written consent from PARSONS to the borrower.

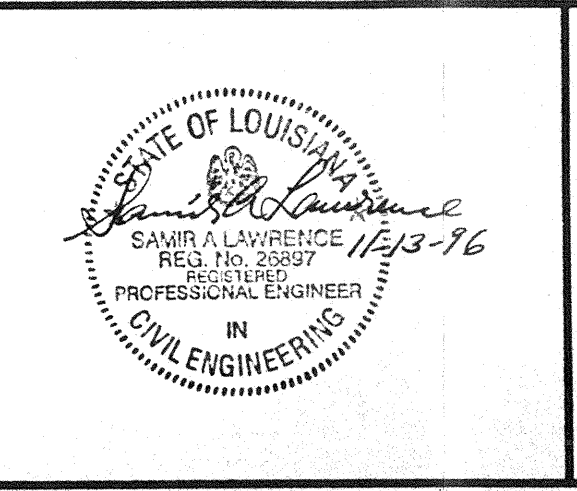
This document and the design it covers are the property of PARSONS. They are loaned only with the borrower's expressed written agreement that they will

FOUNDATION NO OF FDN'S RECD	FOUNDATION LOCATION (COL LINES)	FOUNDATION TOP OF CONC EL	FOUNDATION TYPE	DIMENSIONS													ANCHOR BOLTS PER FIER					REINFORCING PER FOUNDATION										CONC CY	FDN LOC PLAN	REMARKS					
				PLAN	ELEV	A	B	C	D	F	G	H	J	K	M	R	N	ANCHOR BOLT PLAN	TYPE	NO PER FIER	SIZE D	L	P	BAR S		BAR Z		BAR T		BAR Y					BAR W		TIE BAR		
																								NO	SIZE	NO	SIZE	NO	SIZE	NO	SIZE				NO	SIZE	NO	SIZE	NO
I	L.3-16.3	100'-0"	A	I	4'-6"	4'-6"	1'-0"	10"	10"	10"	10"	2'-6"	1"	7"	7"	---	III	2	4	1"	1'-4"	4"	5	#5	5	#5	5	#5	5	#5	5	#5	8	#6	B	#4	5	1.0	LA-S-102
I	L.3-15.3	100'-0"	A	I	4'-6"	4'-6"	1'-0"	10"	10"	10"	10"	2'-6"	1"	7"	7"	---	III	2	4	1"	1'-4"	4"	5	#5	5	#5	5	#5	5	#5	8	#6	B	#4	5	1.0	LA-S-102		
I	N.3-15.3	100'-0"	A	I	4'-6"	4'-6"	1'-0"	10"	10"	10"	10"	2'-6"	1"	7"	7"	---	III	2	4	1"	1'-4"	4"	5	#5	5	#5	5	#5	5	#5	8	#6	B	#4	5	1.0	LA-S-102		
I	V-15.3	100'-0"	A	I	4'-6"	4'-6"	1'-0"	10"	10"	10"	10"	1'-8"	1"	7"	7"	---	III	2	4	1"	1'-4"	4"	5	#5	5	#5	5	#5	5	#5	8	#6	B	#4	4	1.0	LA-S-102		
I	J.3-14.3	100'-0"	A	I	4'-0"	4'-8"	1'-0"	10"	10"	10"	10"	1'-8"	1"	7"	7"	---	III	2	4	1"	1'-4"	4"	5	#5	5	#5	5	#5	5	#5	8	#6	B	#4	4	1.0	LA-S-102		
I	L.3-14.3	100'-0"	A	I	4'-6"	4'-6"	1'-0"	10"	10"	10"	10"	1'-8"	1"	7"	7"	---	III	2	4	1"	1'-4"	4"	5	#5	5	#5	5	#5	5	#5	8	#6	B	#4	4	1.0	LA-S-102		
I	J.3-13.3	100'-0"	A	I	4'-0"	4'-8"	1'-0"	10"	10"	10"	10"	1'-8"	1"	7"	7"	---	III	2	4	1"	1'-4"	4"	5	#5	5	#5	5	#5	5	#5	8	#6	B	#4	4	1.0	LA-S-102		
I	K.3-13.3	100'-0"	A	I	4'-6"	4'-6"	1'-0"	10"	10"	10"	10"	1'-8"	1"	7"	7"	---	III	2	4	1"	1'-4"	4"	5	#5	5	#5	5	#5	5	#5	8	#6	B	#4	4	1.0	LA-S-102		
I	L.3-13.3	100'-0"	A	I	4'-6"	4'-6"	1'-0"	10"	10"	10"	10"	1'-8"	1"	7"	7"	---	III	2	4	1"	1'-4"	4"	5	#5	5	#5	5	#5	5	#5	8	#6	B	#4	4	1.0	LA-S-102		
I	M.3-13.3	100'-0"	A	I	4'-6"	4'-6"	1'-0"	10"	10"	10"	10"	1'-8"	1"	7"	7"	---	III	2	4	1"	1'-4"	4"	5	#5	5	#5	5	#5	5	#5	8	#6	B	#4	4	1.0	LA-S-102		
I	L.3-12.3	100'-0"	A	I	4'-6"	4'-6"	1'-0"	10"	10"	10"	10"	1'-8"	1"	7"	7"	---	III	2	4	1"	1'-4"	4"	5	#5	5	#5	5	#5	5	#5	8	#6	B	#4	4	1.0	LA-S-102		
I	K.3-11.3	100'-0"	A	I	4'-6"	4'-6"	1'-0"	10"	10"	10"	10"	1'-8"	1"	7"	7"	---	III	2	4	1"	1'-4"	4"	5	#5	5	#5	5	#5	5	#5	8	#6	B	#4	4	1.0	LA-S-102		
I	L.3-11.3	100'-0"	A	I	4'-6"	4'-6"	1'-0"	10"	10"	10"	10"	1'-8"	1"	7"	7"	---	III	2	4	1"	1'-4"	4"	5	#5	5	#5	5	#5	5	#5	8	#6	B	#4	4	1.0	LA-S-102		
I	L.3-17	100'-0"	A	I	5'-0"	5'-0"	1'-0"	10"	10"	10"	10"	2'-6"	1"	7"	7"	---	III	2	4	1"	1'-4"	4"	6	#5	6	#5	6	#5	6	#5	8	#6	B	#4	5	1.2	LA-S-102		
I	M.3-17	100'-0"	A	I	5'-0"	5'-0"	1'-0"	10"	10"	10"	10"	2'-6"	1"	7"	7"	---	III	2	4	1"	1'-4"	4"	6	#5	6	#5	6	#5	6	#5	8	#6	B	#4	5	1.2	LA-S-102		
I	N.3-17	100'-0"	A	I	5'-0"	5'-0"	1'-0"	10"	10"	10"	10"	1'-8"	1"	7"	7"	---	III	2	4	1"	1'-4"	4"	6	#5	6	#5	6	#5	6	#5	8	#6	B	#4	4	1.2	LA-S-102		
I	N.3-16.3	100'-0"	A	I	5'-0"	5'-0"	1'-0"	10"	10"	10"	10"	2'-6"	1"	7"	7"	---	III	2	4	1"	1'-4"	4"	6	#5	6	#5	6	#5	6	#5	8	#6	B	#4	5	1.2	LA-S-102		
I	P.3-16.3	100'-0"	A	I	5'-0"	5'-0"	1'-0"	10"	10"	10"	10"	1'-8"	1"	7"	7"	---	III	2	4	1"	1'-4"	4"	6	#5	6	#5	6	#5	6	#5	8	#6	B	#4	4	1.2	LA-S-102		
I	R-16.3	100'-0"	A	I	5'-0"	5'-0"	1'-0"	10"	10"	10"	10"	1'-8"	1"	7"	7"	---	III	2	4	1"	1'-4"	4"	6	#5	6	#5	6	#5	6	#5	8	#6	B	#4	4	1.2	LA-S-102		
I	S-16.3	100'-0"	A	I	5'-0"	5'-0"	1'-0"	10"	10"	10"	10"	1'-8"	1"	7"	7"	---	III	2	4	1"	1'-4"	4"	6	#5	6	#5	6	#5	6	#5	8	#6	B	#4	4	1.2	LA-S-102		
I	W-16.3	100'-0"	A	I	5'-0"	5'-0"	1'-0"	10"	10"	10"	10"	1'-8"	1"	7"	7"	---	III	2	4	1"	1'-4"	4"	6	#5	6	#5	6	#5	6	#5	8	#6	B	#4	4	1.2	LA-S-102		
I	R-14.3	100'-0"	A	I	5'-0"	5'-0"	1'-0"	10"	10"	10"	10"	1'-8"	1"	7"	7"	---	III	2	4	1"	1'-4"	4"	6	#5	6	#5	6	#5	6	#5	8	#6	B	#4	4	1.2	LA-S-102		
I	S-14.3	100'-0"	A	I	5'-0"	5'-0"	1'-0"	10"	10"	10"	10"	1'-8"	1"	7"	7"	---	III	2	4	1"	1'-4"	4"	6	#5	6	#5	6	#5	6	#5	8	#6	B	#4	4	1.2	LA-S-102		
I	T-14.3	100'-0"	A	I	5'-0"	5'-0"	1'-0"	10"	10"	10"	10"	1'-8"	1"	7"	7"	---	III	2	4	1"	1'-4"	4"	6	#5	6	#5	6	#5	6	#5	8	#6	B	#4	4	1.2	LA-S-102		
I	U-14.3	100'-0"	A	I	5'-0"	5'-0"	1'-0"	10"	10"	10"	10"	1'-8"	1"	7"	7"	---	III	2	4	1"	1'-4"	4"	6	#5	6	#5	6	#5	6	#5	8	#6	B	#4	4	1.2	LA-S-102		
I	V-14.3	100'-0"	A	I	5'-0"	5'-0"	1'-0"	10"	10"	10"	10"	1'-8"	1"	7"	7"	---	III	2	4	1"	1'-4"	4"	6	#5	6	#5	6	#5	6	#5	8	#6	B	#4	4	1.2	LA-S-102		
I	M.3-12.3	100'-0"	A	I	5'-0"	5'-0"	1'-0"	10"	10"	10"	10"	1'-8"	1"	7"	7"	---	III	2	4	1"	1'-4"	4"	6	#5	6	#5	6	#5	6	#5	8	#6	B	#4	4	1.2	LA-S-102		
I	N.3-12.3	100'-0"	A	I	5'-0"	5'-0"	1'-0"	10"	10"	10"	10"	1'-8"	1"	7"	7"	---	III	2	4	1"	1'-4"	4"	6	#5	6	#5	6	#5	6	#5	8	#6	B	#4	4	1.2	LA-S-102		
I	M.6-10.3	100'-0"	A	I	3'-0"	3'-0"	1'-0"	10"	10"	10"	10"	1'-8"	1"	1'-0"	1'-0"	---	III	2	4	1"	1'-4"	4"	4	#5	4	#5	-	-	-	8	#6	B	#4	4	0.5	LA-S-102			
I	M.6-11.3	100'-0"	A	I	3'-0"	3'-0"	1'-0"	10"	10"	10"	10"	1'-8"	1"	1'-0"	1'-0"	---	III	2	4	1"	1'-4"	4"	4	#5	4	#5	-	-	-	8	#6	B	#4	4	0.5	LA-S-102			
I	V.1-18.4	100'-0"	A	I	---	---	---	10"	10"	10"	10"	1'-8"	1"	8"	1'-0"	---	III	2	4	1"	1'-4"	4"	-	-	-	-	-	-	-	8	#6	B	#4	4	0.5	LA-S-102 FOR ADD'L INFO SEE P/LA-S-405			
I	W-18.4	100'-0"	A	I	3'-0"	3'-0"	1'-0"	10"	10"	10"	10"	1'-8"	1"	7"	7"	---	III	2	4	1"	1'-4"	4"	4	#5	4	#5	-	-	-	8	#6	B	#4	4	0.5	LA-S-102			
I	W.4-17.1	100'-0"	A	I	---	---	---	10"	10"	10"	10"	1'-8"	1"	1'-0"	8"	---	III	2	4	1"	1'-4"	4"	-	-	-	-	-	-	-	8	#6	B	#4	4	0.5	LA-S-102 FOR ADD'L INFO SEE P/LA-S-405			
I	W.4-18	100'-0"	A	I	3'-0"	3'-0"	1'-0"	10"	10"	10"	10"	1'-8"	1"	7"	7"	---	III	2	4	1"	1'-4"	4"	4	#5	4	#5	-	-	-	8	#6	B	#4	4	0.5	LA-S-102			



DRAWING NO.	DESCRIPTION	NO.	DATE	BY	CHKD	ENGR	PROJ	DESCRIPTION

ISSUED FOR CONSTRUCTION  
 DRAWN MCS 11-15-96  
 CHECKED BGM 11-15-96  
 ENGINEER BGM 11-15-96  
 PROJ BGM 11/15/96



**PARSONS**  
 100 WEST WALNUT STREET  
 PASADENA, CALIFORNIA

**LIGO**  
 CALIFORNIA INSTITUTE OF TECHNOLOGY  
 MASSACHUSETTS INSTITUTE OF TECHNOLOGY

LASER INTERFEROMETER  
 GRAVITATIONAL-WAVE OBSERVATORY  
 SITE NO.2 - LIVINGSTON, LOUISIANA

TITLE: STRUCTURAL CORNER STATION - OSB FOUNDATION SCHEDULE AND DETAILS SHEET I

SCALE: NONE CONTRACT NUMBER: PPI50969 PROJECT NUMBER: 8094

SHEET NUMBER: **LA-S-402**