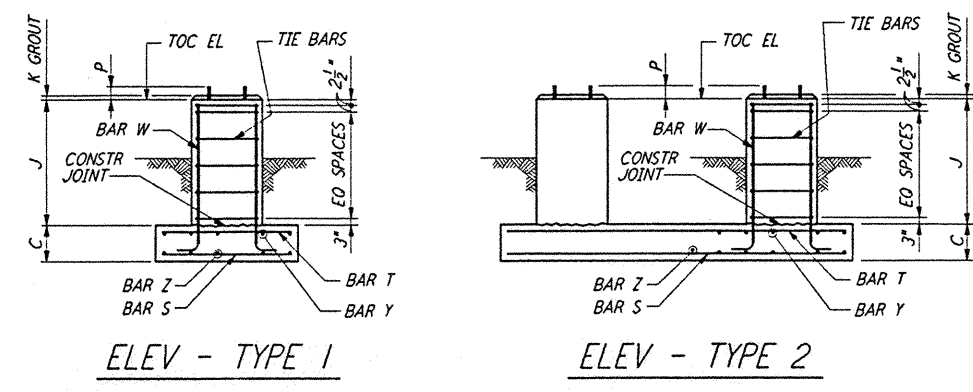


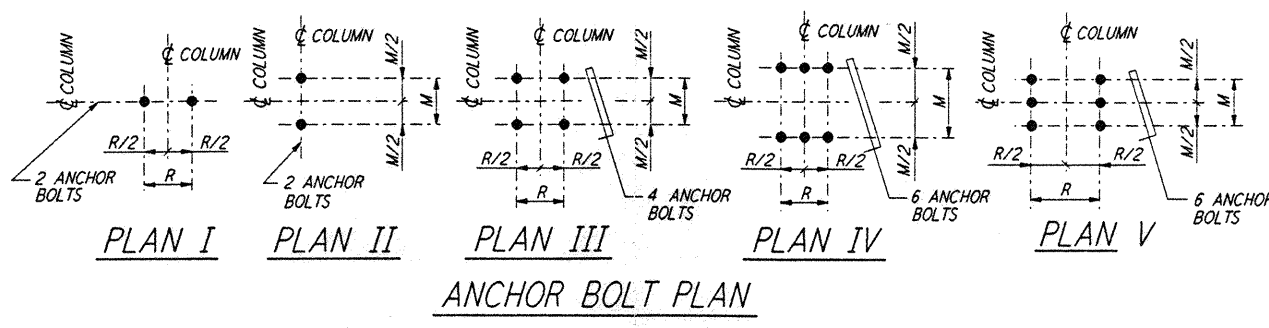
4 - BARS TYPE A  
 8 - BARS TYPE B  
 12 - BARS TYPE C  
 16 - BARS TYPE D  
 20 - BARS TYPE E  
 24 - BARS TYPE F  
**TIE ARRANGEMENT TYPE**

- NOTES:**
- CONSTRUCTION SHALL COMPLY WITH ALL THE REQUIREMENTS OF THE GENERAL NOTES ON DRAWING LA-S-001.
  - THE BAR SPACING IS BASED ON CENTER TO CENTER OF TIE SET.
  - FOR ANCHOR BOLT DETAILS SEE DRAWING LA-S-003.



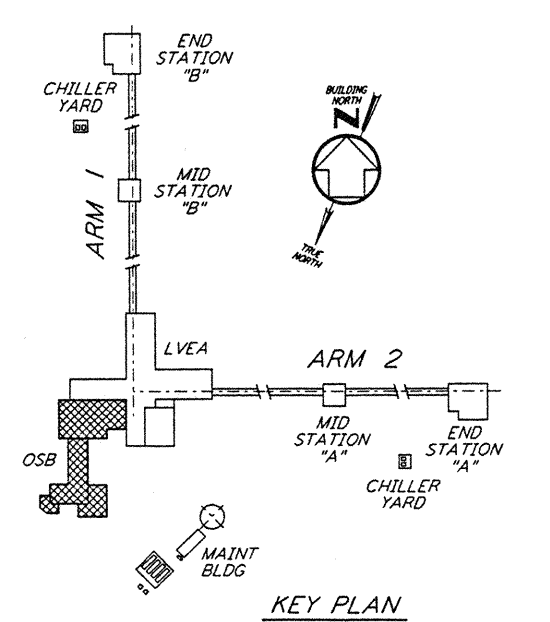
ELEV - TYPE 1  
 ELEV - TYPE 2

**TIE REINFORCEMENT NOTES:**  
 1A. THESE BARS MUST BE TIED AS SHOWN BY DASHED LINES WHEN X DISTANCE IS OVER 6 INCHES.  
 2A. THESE BARS NEED NOT BE TIED WHEN X DISTANCE IS 6 INCHES OR LESS.  
 3A. ALTERNATE 90° HOOKS IN COLUMNS.



PLAN I  
 PLAN II  
 PLAN III  
 PLAN IV  
 PLAN V  
**ANCHOR BOLT PLAN**

NO OF FDN'S REQD	FOUNDATION LOCATION (COL LINES)	TOP OF CONC EL	FOUNDATION TYPE	DIMENSIONS												ANCHOR BOLTS PER PIER				REINFORCING PER FOUNDATION						CONC CY	FDN LOC PLAN	REMARKS												
				PLAN	ELEV	A	B	C	D	F	G	H	J	K	M	R	N	ANCHOR BOLT PLAN	TYPE	NO PER PIER	SIZE D	L	P	BAR S NO SIZE	BAR Z NO SIZE				BAR T NO SIZE	BAR Y NO SIZE	BAR W NO SIZE	TIE BAR TYPE SIZE	NO REQD							
1	V-18	100'-0"	B	2	4'-0"	9'-0"	1'-6"	10"	10"	10"	10"	1'-2"	1"	7"	7"	5'-0"	III	2	4	1"	1'-4"	4"	5	#6	10	#6	5	#6	10	#6	8	#6	B	#4	3	2.3	LA-S-102			
	V-2-18	100'-0"	B	2	4'-0"	9'-0"	1'-6"	10"	10"	10"	10"	1'-2"	1"	7"	7"	5'-0"	III	2	4	1"	1'-4"	4"	5	#6	10	#6	5	#6	10	#6	8	#6	B	#4	3	2.3	LA-S-102			
1	W-17.2	100'-0"	B	2	4'-0"	9'-0"	1'-6"	10"	10"	10"	10"	1'-2"	1"	7"	7"	5'-0"	III	2	4	1"	1'-4"	4"	5	#6	10	#6	5	#6	10	#6	8	#6	B	#4	3	2.3	LA-S-102			
	W-17	100'-0"	B	2	4'-0"	9'-0"	1'-6"	10"	10"	10"	10"	1'-2"	1"	7"	7"	5'-0"	III	2	4	1"	1'-4"	4"	5	#6	10	#6	5	#6	10	#6	8	#6	B	#4	3	2.3	LA-S-102			
1	T-16.3	100'-0"	B	2	4'-0"	24'-0"	1'-6"	10"	10"	10"	10"	1'-2"	1"	7"	7"	20'-0"	III	2	4	1"	1'-4"	4"	5	#6	25	#6	5	#6	25	#6	8	#6	B	#4	3	6.0	LA-S-102			
	U-16.3	100'-0"	B	2	4'-0"	24'-0"	1'-6"	10"	10"	10"	10"	1'-2"	1"	7"	7"	20'-0"	III	2	4	1"	1'-4"	4"	5	#6	25	#6	5	#6	25	#6	8	#6	B	#4	3	6.0	LA-S-102			
1	W-15.3	100'-0"	B	2	4'-0"	24'-0"	1'-6"	10"	10"	10"	10"	1'-2"	1"	7"	7"	20'-0"	III	2	4	1"	1'-4"	4"	5	#6	25	#6	5	#6	25	#6	8	#6	B	#4	3	6.0	LA-S-102			
	W-14.3	100'-0"	B	2	4'-0"	24'-0"	1'-6"	10"	10"	10"	10"	1'-2"	1"	7"	7"	20'-0"	III	2	4	1"	1'-4"	4"	5	#6	25	#6	5	#6	25	#6	8	#6	B	#4	3	6.0	LA-S-102			
1	U-18	100'-0"	B	2	6'-0"	24'-0"	1'-6"	10"	10"	10"	10"	1'-6"	1"	7"	7"	20'-0"	III	2	4	1"	1'-4"	4"	7	#6	25	#6	7	#6	25	#6	8	#6	B	#4	3	9.0	LA-S-102			
	U-17	100'-0"	B	2	6'-0"	24'-0"	1'-6"	10"	10"	10"	10"	1'-6"	1"	7"	7"	20'-0"	III	2	4	1"	1'-4"	4"	7	#6	25	#6	7	#6	25	#6	8	#6	B	#4	3	9.0	LA-S-102			
1	K.3-17	100'-0"						10"	10"	10"	10"	2'-6"	1"	7"	7"		III	2	4	1"	1'-4"	4"																		
	J.3-17	100'-0"						10"	10"	10"	10"	2'-6"	1"	7"	7"		III	2	4	1"	1'-4"	4"																		
	J.3-16.3	100'-0"						10"	10"	10"	10"	2'-6"	1"	7"	7"		III	2	4	1"	1'-4"	4"																		
	J.3-15.3	100'-0"						10"	10"	10"	10"	2'-6"	1"	7"	7"		III	2	4	1"	1'-4"	4"																		
1	K.3-12.3	100'-0"											1"	7"	7"		III	2	4	1"	1'-4"	4"																		
	J.3-12.3	100'-0"											1"	7"	7"		III	2	4	1"	1'-4"	4"																		
	J.3-11.3	100'-0"											1"	7"	7"		III	2	4	1"	1'-4"	4"																		
	J.3-10.3	100'-0"											1"	7"	7"		III	2	4	1"	1'-4"	4"																		
1	K.3-10.3	100'-0"											1"	7"	7"		III	2	4	1"	1'-4"	4"																		
	L.3-10.3	100'-0"											1"	7"	7"		III	2	4	1"	1'-4"	4"																		
1	P.3-14.3	100'-0"						10"	10"	10"	10"	2'-6"	1"	7"	7"		III	2	4	1"	1'-4"	4"																		
	N.3-14.3	100'-0"						10"	10"	10"	10"	2'-6"	1"	7"	7"		III	2	4	1"	1'-4"	4"																		
1	N.3-13.3	100'-0"						10"	10"	10"	10"	2'-6"	1"	7"	7"		III	2	4	1"	1'-4"	4"																		
	M.3-11.3	100'-0"											1"	7"	7"		III	2	4	1"	1'-4"	4"																		
1	M.3-10.3	100'-0"											1"	7"	7"		III	2	4	1"	1'-4"	4"																		

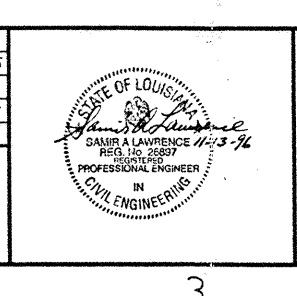


KEY PLAN

This document and the design it covers are the property of PARSONS. They are loaned only with the borrower's expressed written agreement that they will not be reproduced, copied, loaned, exhibited, or used in any other way, except by written consent from PARSONS to the borrower.

NO.	DATE	BY	CHKD	ENGR	PROJ	DESCRIPTION

ISSUED FOR CONSTRUCTION	MCS	11-15-96
DRAWN		
CHECKED		
ENGINEER		
PROJ		



**PARSONS**  
 100 WEST WALNUT STREET  
 PASADENA, CALIFORNIA

**LIGO**  
 CALIFORNIA INSTITUTE OF TECHNOLOGY  
 MASSACHUSETTS INSTITUTE OF TECHNOLOGY

LASER INTERFEROMETER  
 GRAVITATIONAL-WAVE OBSERVATORY  
 SITE NO. 2 - LIVINGSTON, LOUISIANA

TITLE: STRUCTURAL CORNER STATION - OSB FOUNDATION SCHEDULE AND DETAILS SHEET 2

DATE: NONE CONTRACT NUMBER: PPI50969 PROJECT NUMBER: 8094 SHEET NUMBER: LA-S-403