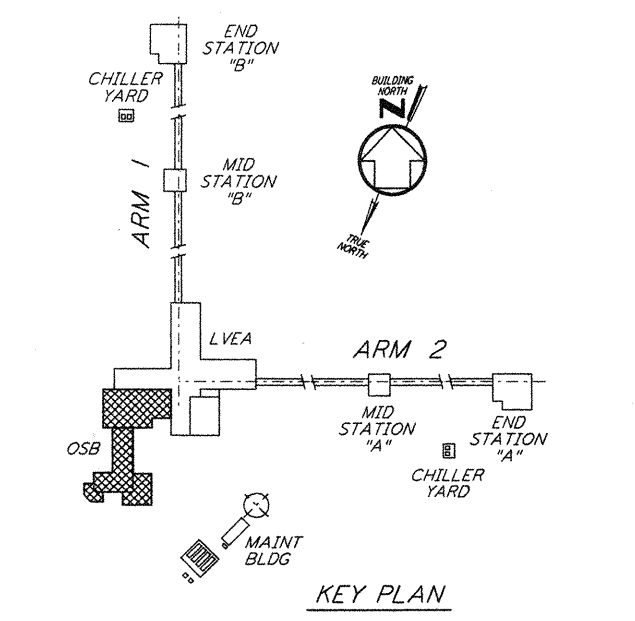


NOTES:
 1. CONSTRUCTION SHALL COMPLY WITH ALL THE REQUIREMENTS OF THE GENERAL NOTES ON DRAWING LA-S-001.
 2. THE BAR SPACING IS BASED ON CENTER TO CENTER OF TIE SET.
 3. FOR ANCHOR BOLT DETAILS SEE DRAWING LA-S-003.

This document and the design it covers are the property of **PARSONS**. They are loaned only with the borrower's expressed written agreement that they will not be reproduced, copied, loaned, exhibited, or used in any other way, except by written consent from **PARSONS** to the borrower.
 Thu Aug 13 15:19:47 1998 C:\PLT\0\QUE\S3*P982.DWG 52085 K:\V9802\st\lsg403.dwg

NO OF FDNS REQD	FOUNDATION		FOUNDATION TYPE	DIMENSIONS													ANCHOR BOLTS PER PIER					REINFORCING PER FOUNDATION										CONC CY	FDN LOC PLAN	REMARKS											
	LOCATION (COL LINES)			A	B	C	D	E	F	G	H	I	J	K	L	M	N	R/2	R	L	P	BAR S		BAR Z		BAR T		BAR Y		BAR W					TIE BAR										
	V. NO	H. NO																				NO	SIZE	NO	SIZE	NO	SIZE	NO	SIZE	NO	SIZE				NO	SIZE	NO	SIZE	NO	SIZE	NO	SIZE	NO	SIZE	NO
1	V-18		100'-0"	B	2	4'-0"	9'-0"	1'-6"	10"	10"	10"	10"	1'-2"	1"	7"	7"	5'-0"	III	2	4	1"	1'-4"	4"	5	#6	10	#6	5	#6	10	#6	B	#6	B	#4	3	2.3	LA-S-102							
	V-2-18		100'-0"	B	2	4'-0"	9'-0"	1'-6"	10"	10"	10"	10"	1'-2"	1"	7"	7"	5'-0"	III	2	4	1"	1'-4"	4"	5	#6	10	#6	5	#6	10	#6	B	#6	B	#4	3	2.3	LA-S-102							
1	W-17.2		100'-0"	B	2	4'-0"	9'-0"	1'-6"	10"	10"	10"	10"	1'-2"	1"	7"	7"	5'-0"	III	2	4	1"	1'-4"	4"	5	#6	10	#6	5	#6	10	#6	B	#6	B	#4	3	2.3	LA-S-102							
	W-17		100'-0"	B	2	4'-0"	9'-0"	1'-6"	10"	10"	10"	10"	1'-2"	1"	7"	7"	5'-0"	III	2	4	1"	1'-4"	4"	5	#6	10	#6	5	#6	10	#6	B	#6	B	#4	3	2.3	LA-S-102							
1	T-16.3		100'-0"	B	2	4'-0"	24'-0"	1'-6"	10"	10"	10"	10"	1'-2"	1"	7"	7"	20'-0"	III	2	4	1"	1'-4"	4"	5	#6	25	#6	5	#6	25	#6	B	#6	B	#4	3	6.0	LA-S-102							
	U-16.3		100'-0"	B	2	4'-0"	24'-0"	1'-6"	10"	10"	10"	10"	1'-2"	1"	7"	7"	20'-0"	III	2	4	1"	1'-4"	4"	5	#6	25	#6	5	#6	25	#6	B	#6	B	#4	3	6.0	LA-S-102							
1	W-15.3		100'-0"	B	2	4'-0"	24'-0"	1'-6"	10"	10"	10"	10"	1'-2"	1"	7"	7"	20'-0"	III	2	4	1"	1'-4"	4"	5	#6	25	#6	5	#6	25	#6	B	#6	B	#4	3	6.0	LA-S-102							
	W-14.3		100'-0"	B	2	4'-0"	24'-0"	1'-6"	10"	10"	10"	10"	1'-2"	1"	7"	7"	20'-0"	III	2	4	1"	1'-4"	4"	5	#6	25	#6	5	#6	25	#6	B	#6	B	#4	3	6.0	LA-S-102							
1	U-18		100'-0"	B	2	6'-0"	24'-0"	1'-6"	10"	10"	10"	10"	1'-6"	1"	7"	7"	20'-0"	III	2	4	1"	1'-4"	4"	7	#6	25	#6	7	#6	25	#6	B	#6	B	#4	3	9.0	LA-S-102							
	U-17		100'-0"	B	2	6'-0"	24'-0"	1'-6"	10"	10"	10"	10"	1'-6"	1"	7"	7"	20'-0"	III	2	4	1"	1'-4"	4"	7	#6	25	#6	7	#6	25	#6	B	#6	B	#4	3	9.0	LA-S-102							
1	K-3-17		100'-0"						10"	10"	10"	10"	2'-6"	1"	7"	7"		III	2	4	1"	1'-4"	4"														20.0	LA-S-102	FOR ADDITIONAL INFORMATION SEE FON LOCATION PLAN						
	J-3-17		100'-0"						10"	10"	10"	10"	2'-6"	1"	7"	7"		III	2	4	1"	1'-4"	4"																20.0	LA-S-102	FOR ADDITIONAL INFORMATION SEE FON LOCATION PLAN				
	J-3-16.3		100'-0"						10"	10"	10"	10"	2'-6"	1"	7"	7"		III	2	4	1"	1'-4"	4"																	20.0	LA-S-102	FOR ADDITIONAL INFORMATION SEE FON LOCATION PLAN			
	J-3-15.3		100'-0"						10"	10"	10"	10"	2'-6"	1"	7"	7"		III	2	4	1"	1'-4"	4"																	20.0	LA-S-102	FOR ADDITIONAL INFORMATION SEE FON LOCATION PLAN			
1	K-3-12.3		100'-0"											1"	7"	7"		III	2	4	1"	1'-4"	4"																42.0	LA-S-102	FOR ADDITIONAL INFORMATION SEE FON LOCATION PLAN				
	J-3-12.3		100'-0"											1"	7"	7"		III	2	4	1"	1'-4"	4"																	42.0	LA-S-102	FOR ADDITIONAL INFORMATION SEE FON LOCATION PLAN			
	J-3-11.3		100'-0"											1"	7"	7"		III	2	4	1"	1'-4"	4"																		42.0	LA-S-102	FOR ADDITIONAL INFORMATION SEE FON LOCATION PLAN		
	J-3-10.3		100'-0"											1"	7"	7"		III	2	4	1"	1'-4"	4"																			42.0	LA-S-102	FOR ADDITIONAL INFORMATION SEE FON LOCATION PLAN	
1	K-3-10.3		100'-0"											1"	7"	7"		III	2	4	1"	1'-4"	4"																		42.0	LA-S-102	FOR ADDITIONAL INFORMATION SEE FON LOCATION PLAN		
	L-3-10.3		100'-0"											1"	7"	7"		III	2	4	1"	1'-4"	4"																				42.0	LA-S-102	FOR ADDITIONAL INFORMATION SEE FON LOCATION PLAN
	P-3-14.3		100'-0"						10"	10"	10"	10"	2'-6"	1"	7"	7"		III	2	4	1"	1'-4"	4"																			14.3	LA-S-102	FOR ADDITIONAL INFORMATION SEE FON LOCATION PLAN	
	N-3-14.3		100'-0"						10"	10"	10"	10"	2'-6"	1"	7"	7"		III	2	4	1"	1'-4"	4"																			14.3	LA-S-102	FOR ADDITIONAL INFORMATION SEE FON LOCATION PLAN	
1	N-3-13.3		100'-0"					10"	10"	10"	10"	2'-6"	1"	7"	7"		III	2	4	1"	1'-4"	4"																				15.0	LA-S-102	FOR ADDITIONAL INFORMATION SEE FON LOCATION PLAN	
	M-3-11.3		100'-0"											1"	7"	7"		III	2	4	1"	1'-4"	4"																			15.0	LA-S-102	FOR ADDITIONAL INFORMATION SEE FON LOCATION PLAN	
1	M-3-10.3		100'-0"											1"	7"	7"		III	2	4	1"	1'-4"	4"																				15.0	LA-S-102	FOR ADDITIONAL INFORMATION SEE FON LOCATION PLAN



AS-BUILT DRAWINGS

ISSUED FOR CONSTRUCTION

DRAWN MCS 11-15-96

CHECKED DDM 11-15-96

ENGINEER BP 11-15-96

PROJ TDM 11-15-96

ISSUED FOR AS-BUILT

PARSONS

100 WEST WALNUT STREET
PASADENA, CALIFORNIA

LIGO

CALIFORNIA INSTITUTE OF TECHNOLOGY
MASSACHUSETTS INSTITUTE OF TECHNOLOGY

LASER INTERFEROMETER
GRAVITATIONAL-WAVE OBSERVATORY
SITE NO. 2 - LIVINGSTON, LOUISIANA

CONTRACT NUMBER: PPI50969

PROJECT NUMBER: 8094

SHEET NUMBER: L A - S - 403