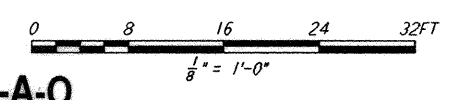
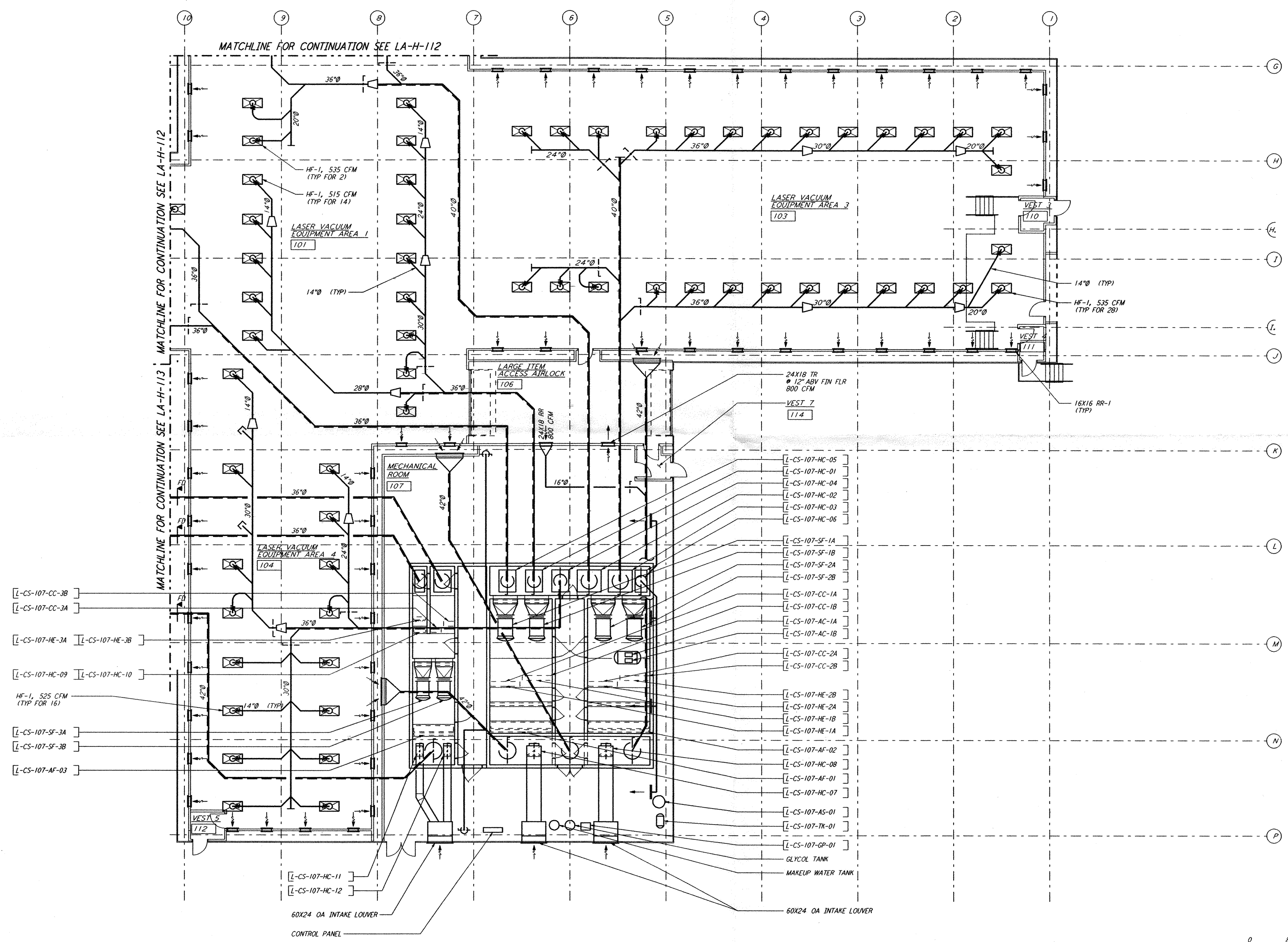


This document and the design it covers are the property of PARSONS. They are loaned only with the borrower's expressed written agreement that they will not be reproduced, copied, loaned, exhibited, or used in any other way, except by written consent from PARSONS to the borrower.



LIGO-D960967-A-0

NO.	DATE	APPROD BY	DESCRIPTION OF REVISION
9			
8			
7			
6			
5			
4			
3			
2			
1			

NO.	DATE	APPROD BY	ISSUED FOR
J	10/31/95	TDM	PRELIMINARY DESIGN REVIEW
H			
G			
F			
E			
D			
C			
B			
A			

DATE	10/31/95
DRAWN	CLP
CHECKED	
ENGINEER	
PROJ MGR	

PARSONS
 100 WEST WALNUT STREET
 PASADENA, CALIFORNIA

LIGO
 CALIFORNIA INSTITUTE OF TECHNOLOGY
 MASSACHUSETTS INSTITUTE OF TECHNOLOGY

LASER INTERFEROMETER
 GRAVITATIONAL-WAVE OBSERVATORY
 SITE NO. 2 - LIVINGSTON, LOUISIANA

TITLE: CORNER STATION LVEA FLOOR PLAN

AS NOTED PPI50969 8094

LA-H-111

Mon Oct 30 20:27:12 1995 s3-v18b2 J:\PLOTS\QUEUES\18B2\MU11D.PRF