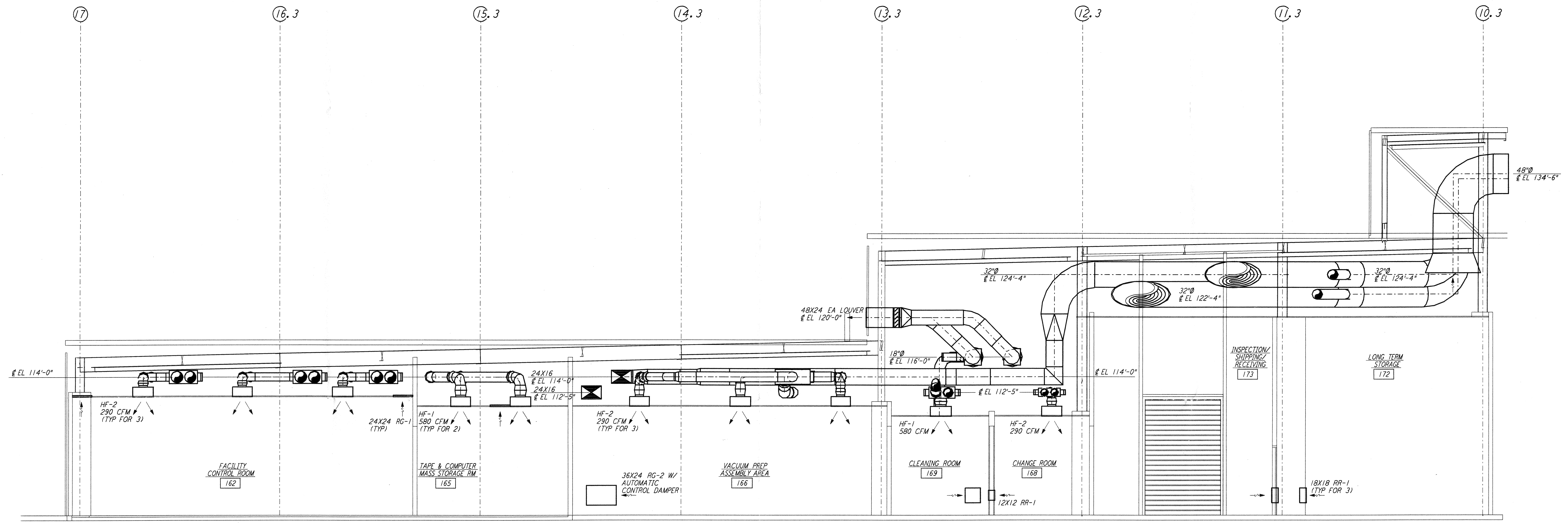
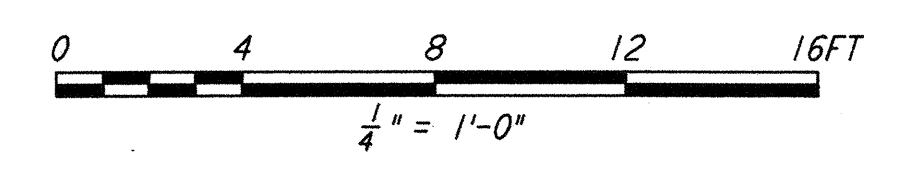


NOTES:
 1. FOR LEGEND, ABBREVIATIONS AND GENERAL NOTES SEE SHEETS LA-H-001 AND LA-H-002.
 2. SEE FLOOR PLAN NOTES FOR DUCT INSULATION.



SECTION **D**
 1/4" = 1'-0" REF LA-H-153 LA-H-113



This document and the design it covers are the property of PARSONS. They are loaned only with the borrower's expressed written agreement that they will not be reproduced, copied, loaned, exhibited, or used in any other way, except by written consent from PARSONS to the borrower.

NO.	DATE	BY	CHKD	ENGR	PROJ	DESCRIPTION
1	8-7-98	DJB	AA	AA	WVV	ISSUED FOR AS-BUILT

ISSUED FOR CONSTRUCTION	
DRAWN	CLP 11-15-96
CHECKED	MN 10-25-96
ENGINEER	AA 1-23-96
PROJ	TDM 11-15-96

AS-BUILT DRAWINGS

PARSONS
 100 WEST WALNUT STREET
 PASADENA, CALIFORNIA

LIGO
 CALIFORNIA INSTITUTE OF TECHNOLOGY
 MASSACHUSETTS INSTITUTE OF TECHNOLOGY

LIGO-D960981-01-0
 LASER INTERFEROMETER
 GRAVITATIONAL-WAVE OBSERVATORY
 SITE NO. 2 - LIVINGSTON, LOUISIANA

TITLE	SCALE	CONTRACT NUMBER	PROJECT NUMBER
HVAC CORNER STATION SECTIONS SHEET 3	AS NOTED	PP150969	8094
SHEET NUMBER			REVISIONS
LA-H-153			▲