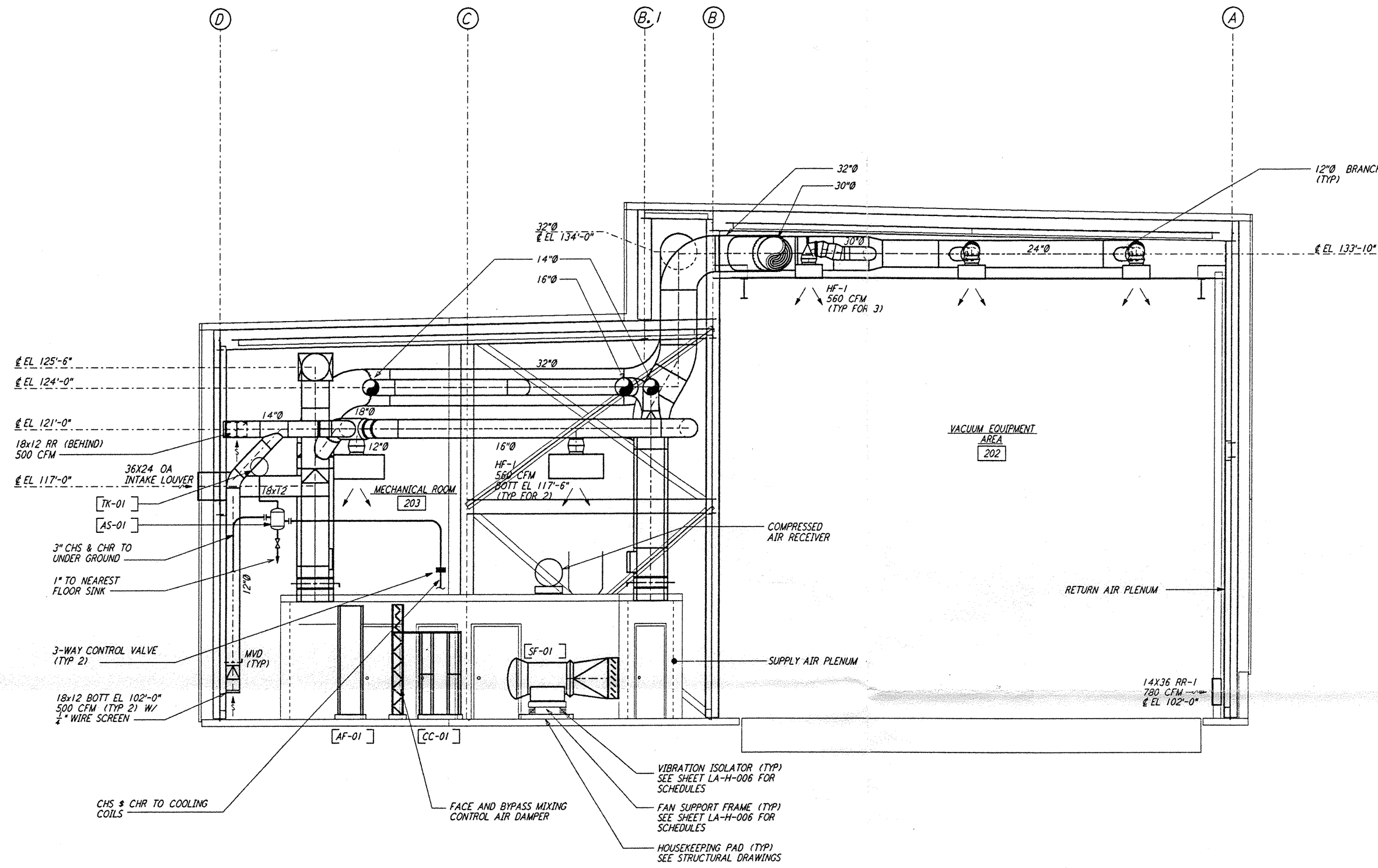
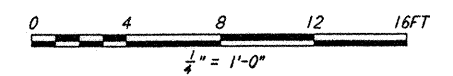


**NOTES:**

1. FOR LEGEND, ABBREVIATIONS AND GENERAL NOTES SEE SHEETS LA-H-001 AND LA-H-002.
2. PROVIDE HIGH PRESSURE FLEX CONNECTIONS AT THE POINT OF CONNECTION OF DUCTS AND THE AIR HANDLING UNITS.
3. SEE FLOOR PLANS FOR DUCT INSULATION NOTES.
4. LOCATE ROOM TEMPERATURE SENSOR/TRANSMITTER FOR THE MECHANICAL ROOM AT 4'-6" ABOVE FINISHED FLOOR LEVEL.
5. WHERE PIPES PENETRATE FLOOR SLAB, PROVIDE STEEL SLEEVE AND LINK SEAL.



SECTION A REF  
 1/4" = 1'-0" LA-H-241 LA-H-211

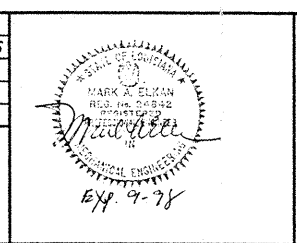


not be reproduced, copied, loaned, exhibited, or used in any other way, except by written consent from PARSONS to the borrower.

This document and the design it covers are the property of PARSONS. They are loaned only with the borrower's expressed written agreement that they will

| DRAWING NO. | DESCRIPTION | NO. | DATE | BY | CHKD | ENGR | PROJ | DESCRIPTION |
|-------------|-------------|-----|------|----|------|------|------|-------------|
|             |             |     |      |    |      |      |      |             |
|             |             |     |      |    |      |      |      |             |

|                         |     |          |
|-------------------------|-----|----------|
| ISSUED FOR CONSTRUCTION | CLP | 11-15-96 |
| DRAWN                   | YYS | 11-25-96 |
| CHECKED                 | AA  | 10-21-96 |
| ENGINEER                | BBB | 01/15/97 |
| PROJ                    |     |          |



**PARSONS**  
 100 WEST WALNUT STREET  
 PASADENA, CALIFORNIA

**LIGO**  
 CALIFORNIA INSTITUTE OF TECHNOLOGY  
 MASSACHUSETTS INSTITUTE OF TECHNOLOGY

LASER INTERFEROMETER  
 GRAVITATIONAL-WAVE OBSERVATORY  
 SITE NO. 2 - LIVINGSTON, LOUISIANA

|   |          |                 |                |
|---|----------|-----------------|----------------|
| TITLE                                   | AS NOTED | CONTRACT NUMBER | PROJECT NUMBER |
| HVAC<br>END STATION<br>SECTIONS SHEET 1 | PP150969 | 8094            |                |
| SHEET NUMBER                            |          | REVISIONS       |                |
| LA-H-241                                |          |                 |                |