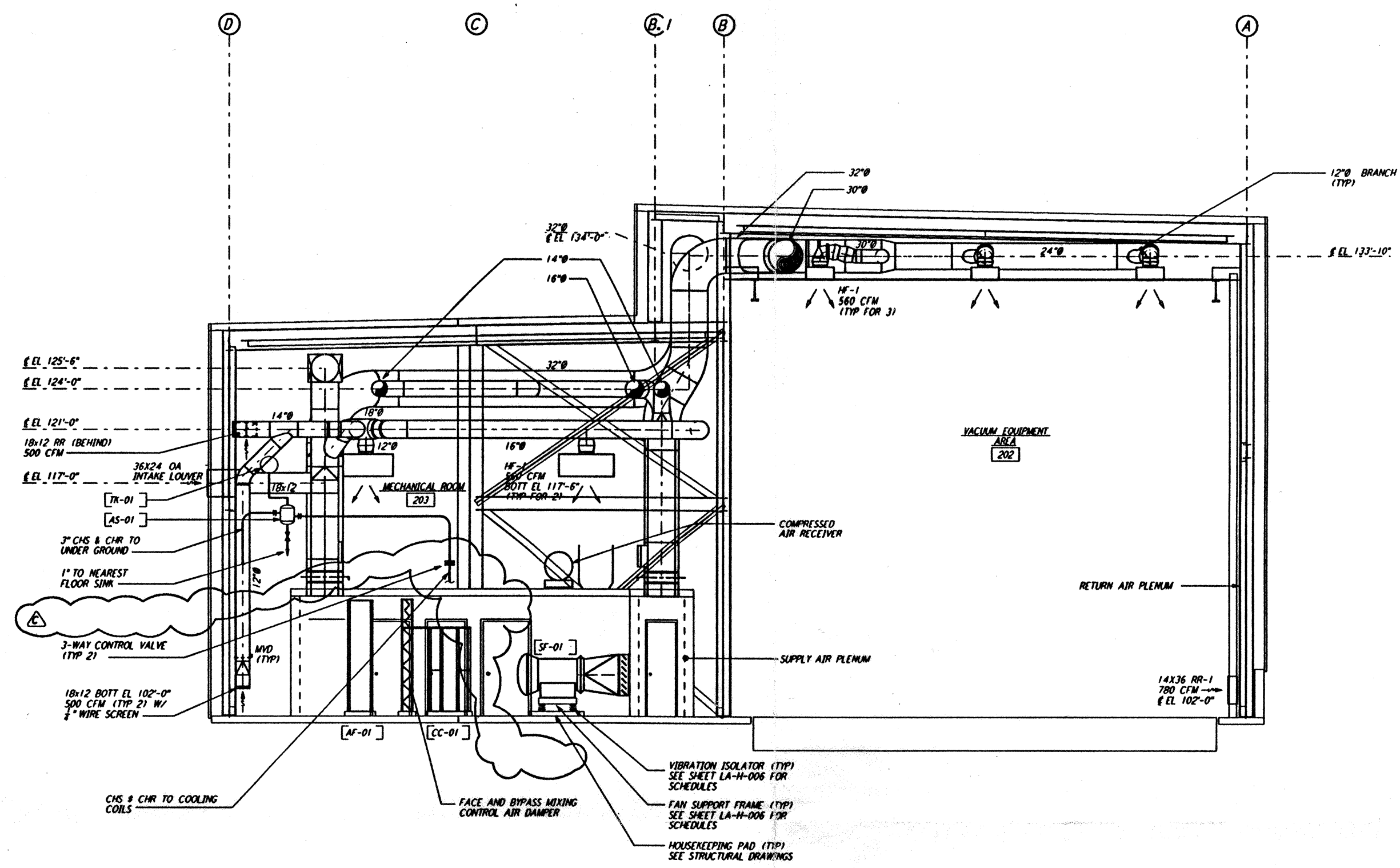
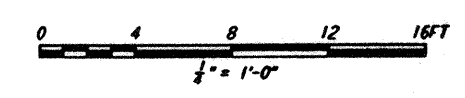


- NOTES:**
1. FOR LEGEND, ABBREVIATIONS AND GENERAL NOTES SEE SHEETS LA-H-001 AND LA-H-002.
 2. PROVIDE HIGH PRESSURE FLEX CONNECTIONS AT THE POINT OF CONNECTION OF DUCTS AND THE AIR HANDLING UNITS.
 3. SEE FLOOR PLANS FOR DUCT INSULATION NOTES.
 4. LOCATE ROOM TEMPERATURE SENSOR/TRANSMITTER FOR THE MECHANICAL ROOM AT 4'-6" ABOVE FINISHED FLOOR LEVEL.
 5. WHERE PIPES PENETRATE FLOOR SLAB, PROVIDE STEEL SLEEVE AND LINK SEAL.



SECTION A
 1/4" = 1'-0" REF LA-H-241 LA-H-211



This document and the design it covers are the property of PARSONS. They are loaned only with the borrower's expressed written agreement that they will not be reproduced, copied, loaned, exhibited, or used in any other way, except by written consent from PARSONS to the borrower.

NO.	DATE	BY	CHKD	ENGR	PROJ	DESCRIPTION
C	8-10-96	CLP	AA	AA	TDM	BID ADDENDUM #2
B	7-24-96	CLP	ME	AA	TDM	ISSUED FOR BID
A	6-14-96	CLP	ME	AA	TDM	FINAL DESIGN REVIEW

DRAWN	CLP
CHECKED	
ENGINEER	
PROJ	

PARSONS
 100 WEST WALNUT STREET
 PASADENA, CALIFORNIA

LIGO
 CALIFORNIA INSTITUTE OF TECHNOLOGY
 MASSACHUSETTS INSTITUTE OF TECHNOLOGY

LASER INTERFEROMETER
 GRAVITATIONAL-WAVE OBSERVATORY
 SITE NO. 2 - LIVINGSTON, LOUISIANA

TITLE	SCALE	CONTRACT NUMBER	PROPERTY NUMBER
HVAC END STATION SECTIONS SHEET 1	AS NOTED	PP150969	8094

LA-H-241

Tue Sep 10 09:48:43 1996 s3-v18b2 J:\PLOTS\QJEUES\18B2\MU241A.PRF