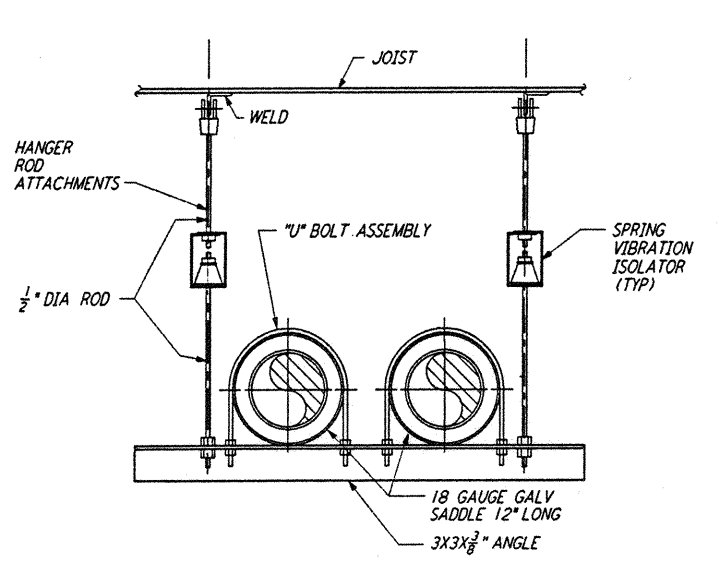
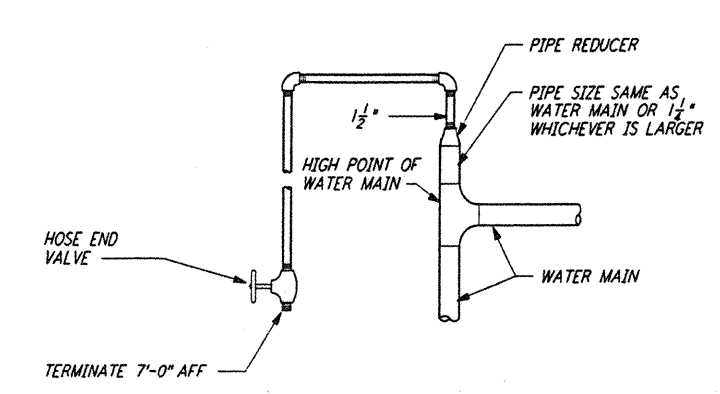


TYPICAL BASE ELBOW SUPPORT (1) REF
 NTS LA-H-412

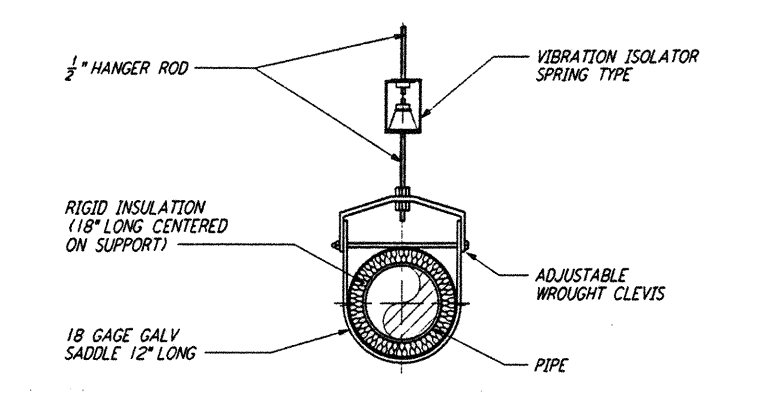


PIPE HANGER - TRAPEZE (2) REF
 NTS LA-H-412



NOTE: LOCATE AT THE HIGHEST POINT OF THE CHILLED WATER SYSTEM.

MANUAL AIR VENT (3) REF
 NTS LA-H-412



NOTE: MATCH OD OF INSULATION. MATCH OD OF PIPE FOR UNINSULATED LINES.

PIPE HANGER - SINGLE PIPE (4) REF
 NTS LA-H-412

NOTES:
 1. FOR LEGEND, ABBREVIATIONS AND GENERAL NOTES SEE SHEETS LA-H-001 AND LA-H-002.

not be reproduced, copied, loaned, exhibited, or used in any other way, except by written consent from PARSONS to the borrower.

This document and the design it covers are the property of PARSONS. They are loaned only with the borrower's expressed written agreement that they will

LIGO-D960993-A-O

REFERENCES DRAWING NO. DESCRIPTION	REVISIONS NO. DATE BY CHKD ENGR PROJ DESCRIPTION	A 6-14-96 CLP [Signature] AA [Signature] FINAL DESIGN REVIEW	DRAWN CLP CHECKED ENGINEER PROJ	100 WEST WALNUT STREET PASADENA, CALIFORNIA	CALIFORNIA INSTITUTE OF TECHNOLOGY MASSACHUSETTS INSTITUTE OF TECHNOLOGY	LASER INTERFEROMETER GRAVITATIONAL-WAVE OBSERVATORY SITE NO. 2 - LIVINGSTON, LOUISIANA	TITLE HVAC DETAILS SHEET 2	SCALE NONE CONTRACT NUMBER PP150969 PROJECT NUMBER 8094 SHEET NUMBER LA-H-412	REVISIONS [Signature]
---------------------------------------	---	--	--	--	---	--	----------------------------------	--	--------------------------