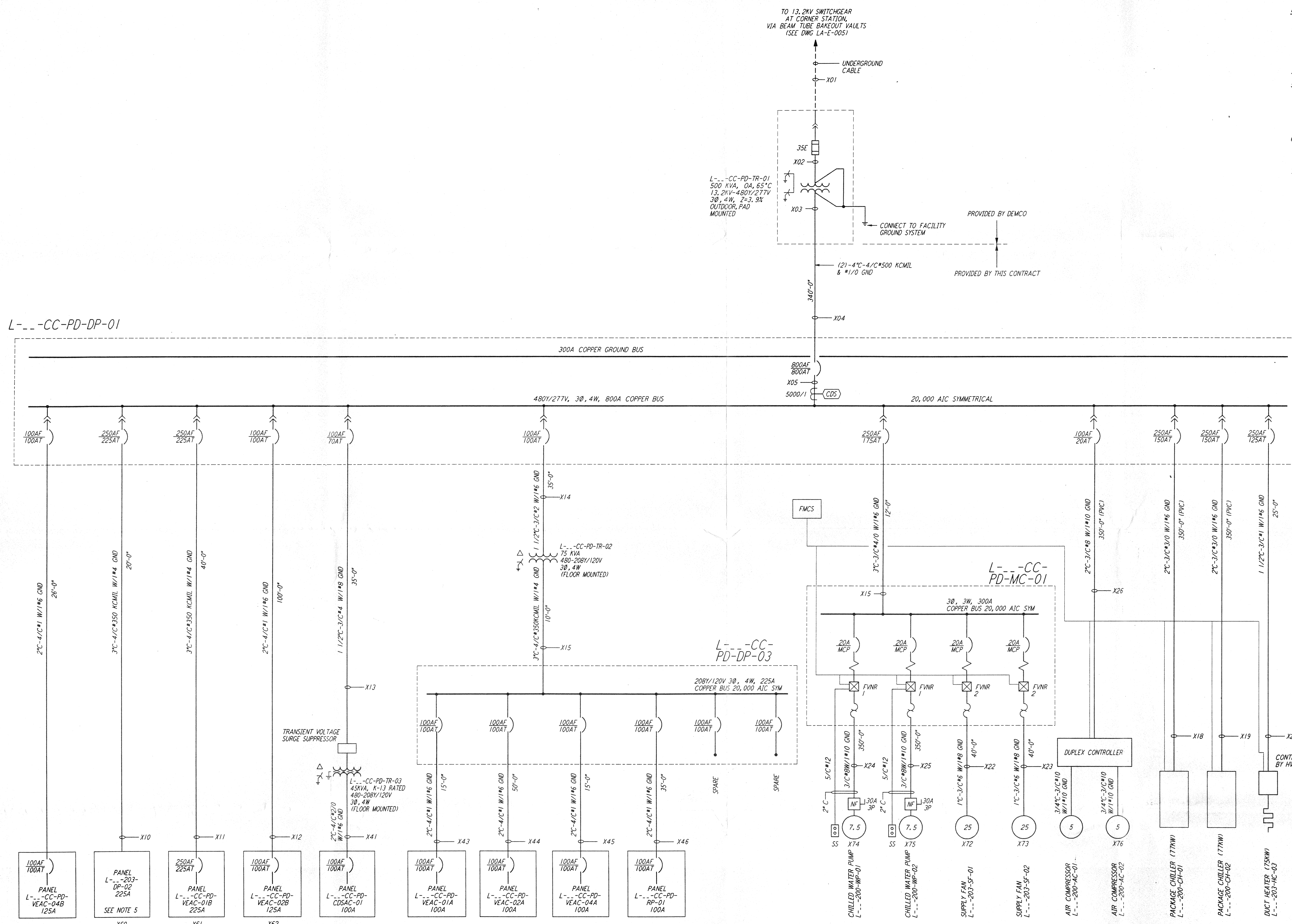


- NOTES:**
- FOR LEGEND AND GENERAL NOTES SEE DWG LA-E-005.
 - ALL CONDUCTORS ARE COPPER UNLESS OTHERWISE NOTED.
 - ALL TRANSFORMER WINDINGS ARE ALUMINUM UNLESS OTHERWISE NOTED.
 - NOT USED.
 - PANEL DP-02 SHALL BE PROVIDED WITH REMOTE CONTROLLED CIRCUIT BREAKERS FOR ALL LIGHTING CIRCUITS (9 CIRCUITS). PROVIDE 3 SPARE SINGLE-POLE 20A REMOTE CONTROL CIRCUIT BREAKERS. REMOTE CONTROL TRANSCEIVER AND BREAKERS SHALL BE SQUARE D POWERLINK OR APPROVAL EQUAL. TRANSCEIVER SHALL BE COMPATIBLE WITH THE FMCS IN SPECIFICATION SECTION 13001.
 - ALL CIRCUIT BREAKERS SHALL BE PROVIDED WITH LOCKING/LOCKABLE ACCESSORIES TO ENSURE THAT CIRCUITS ARE ENERGIZED BY AUTHORIZED PERSONNEL ONLY.
 - DISTRIBUTION AND LIGHTING PANELS SHALL BE FURNISHED WITH LOCKABLE DOORS. CIRCUIT BREAKERS SHALL BE PROVIDED WITH LOCKING/LOCKABLE ACCESSORIES TO ENSURE THAT CIRCUITS ARE ENERGIZED BY AUTHORIZED PERSONNEL ONLY.



- ANALYTIC STUDY NOTES:**
- X12 REPRESENTS THE ANALYTIC NODE NUMBER, AND CORRESPONDS WITH THE ETAP VERSION 7.301 ANALYTIC STUDY.

NODE NUMBERING SCHEDULE

BUILDING	DESIGNATOR	X
END, ARM A	EA	4
END, ARM B	EB	6

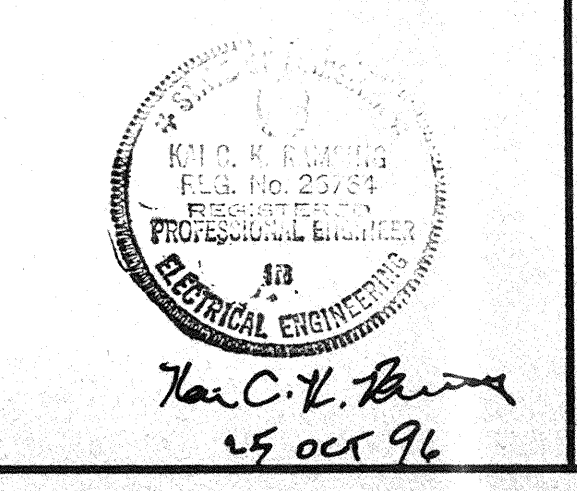
REPLACE X WITH THE NUMBER AT RIGHT TO IDENTIFY THE SPECIFIC NODE IN A SPECIFIC BUILDING.

This document and the design it covers are the property of PARSONS. They are loaned only with the borrower's expressed written agreement that they will not be reproduced, copied, loaned, exhibited, or used in any other way, except by written consent from PARSONS to the borrower.

NO.	DATE	BY	CHK'D	ENGR	PROJ	DESCRIPTION

ISSUED FOR CONSTRUCTION

DRAWN	M. M.	11-15-96
CHECKED	JCL	7-24-96
ENGINEER	KCL	10-25-96
PROJ		11/15/96



PARSONS

100 WEST WALNUT STREET
 PASADENA, CALIFORNIA

LIGO

CALIFORNIA INSTITUTE OF TECHNOLOGY
 MASSACHUSETTS INSTITUTE OF TECHNOLOGY

LASER INTERFEROMETER
 GRAVITATIONAL-WAVE OBSERVATORY
 SITE NO.2 - LIVINGSTON, LOUISIANA

**ELECTRICAL
 TYPICAL END STATION
 SINGLE LINE DIAGRAM**

TITLE	SCALE	CONTRACT NUMBER	PROJECT NUMBER
	NONE	PP150969	8094
SHEET NUMBER	REVISIONS		
LA-E-008			