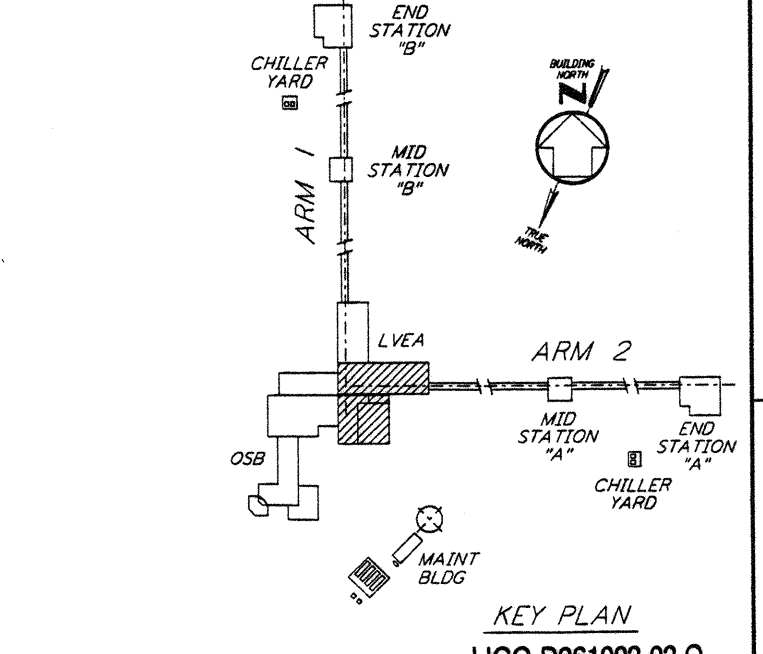
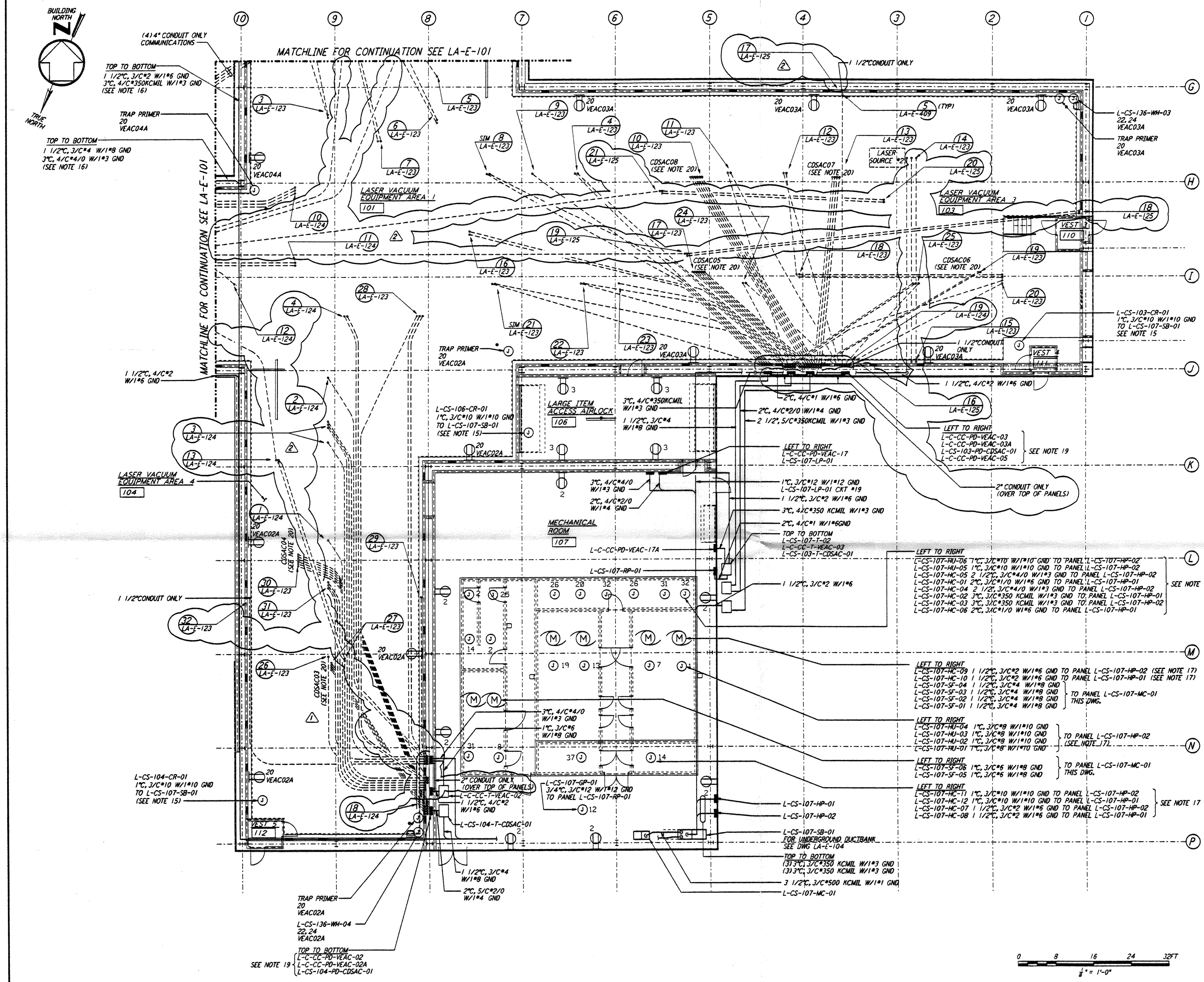


GENERAL NOTES:

- FOR SYMBOLS SEE DWG. LA-E-002.
- FOR ABBREVIATIONS SEE DWG. LA-E-001.
- FOR RECEPTACLE SCHEDULE SEE DWG. LA-E-007.
- FOR RECEPTACLE PANEL SCHEDULE SEE DWG. LA-E-117 THRU 121.
- ALL CONDUIT RUNS ARE SHOWN DIAGRAMMATICALLY ONLY. FIELD SHALL COORDINATE PRIOR TO INSTALLATION TO AVOID CONFLICT.
- WIRES FOR RECEPTACLE CIRCUITS SHALL BE 2/C*12 W/1*12 GND THIN TRAY CABLE IN CONDUIT.
- ALL 120V 1Ø CIRCUITS TO RECEPTACLES SHALL HAVE INDIVIDUAL NEUTRALS. (NO COMMON NEUTRALS).
- EACH THREE PHASE CIRCUIT SHALL HAVE DEDICATED COMMON NEUTRAL AND GROUND.
- ALL RECEPTACLE INSTALLED IN GYPSUM BOARD SHALL BE FLUSH MOUNTED WITH CONCEALED CONDUIT DROP FROM CEILING.
- UNLESS OTHERWISE INDICATED RECEPTACLES ELEVATION SHALL BE 18" FROM FINISH FLOOR.
- NOT USED
- ALL FITTING SHALL BE 1 1/2" TO ALLOW SPACE FOR SPlicing (PER N.E.C. ART 370-16) FIELD SHALL FURNISH ALL REQUIRED REDUCERS.
- CONDUITS SHALL BE SUPPORTED AT INTERVALS OF 10'-0" MAX.
- FOR STANDARD INSTALLATION DETAILS SEE DWG. LA-E-401 TO 409.
- CIRCUITS FOR CRANES ARE FROM PANEL L-CS-107-SB-01 AND SHALL TERMINATE IN A 480V, 3ØAMP, 3 POLE DISCONNECT SWITCH EACH. LOCATION OF DISCONNECT SWITCH SHALL BE AT 54" M.H.
- ROUTE CONDUIT WITHIN WALLS AND ABOVE CRANE.
- ALL CIRCUIT IDENTIFICATIONS AS SHOWN FEEDING THESE DEVICES/LOADS REFERENCE ONLY THE FIRST CIRCUIT/SLOT NUMBERS.
- ALL 120V 1Ø DUPLEX RECEPTACLE CIRCUIT SHOWN IN ROOMS 106 & 107 ARE FROM L-CS-107-RP-01.
- ALL PANELS INDICATED SHALL BE FLUSH MOUNTED ON LVEA WALL. PANELS ARE SHOWN WITHIN WALL SPACE FOR DRAWING CLARITY ONLY.
- ALL CDSAC CONDUIT EMBEDDED WITHIN AND BELOW LVEA FLOOR SLABS SHALL BE 2" IN SIZE AND SPACED ON 4" CENTERS AT STUB-UPS.

LEGEND:

22, 24
 VEAC04A = CIRCUIT NUMBER 22, 24 PANEL L-C-CC-PD-VEAC-04A

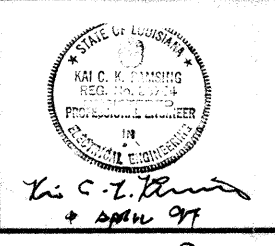


This document and the design it covers are the property of PARSONS. They are loaned only with the borrower's expressed written agreement that they will not be reproduced, copied, loaned, exhibited, or used in any other way, except by written consent from PARSONS to the borrower.

NO.	DATE	BY	CHKD	ENGR	PROJ	DESCRIPTION
2	4-4-97	M. M.				GENERAL REVISIONS
1	3-21-97	J. G.				GENERAL REVISIONS

NO.	DATE	BY	CHKD	ENGR	PROJ	DESCRIPTION
1	11-15-96	M. M.				ISSUED FOR CONSTRUCTION
2	7-24-96	J. C. L.				CHECKED
3	10-25-96	K. C. R.				ENGINEER
4	11-15-96	T. D. M.				PROJ

STATE OF LOUISIANA
 PROFESSIONAL ENGINEER
 KENNETH C. RAYMOND
 No. 11159
 Exp. 12/31/99



PARSONS
 100 WEST WALNUT STREET
 PASADENA, CALIFORNIA

LIGO
 CALIFORNIA INSTITUTE OF TECHNOLOGY
 MASSACHUSETTS INSTITUTE OF TECHNOLOGY

**LASER INTERFEROMETER
 GRAVITATIONAL-WAVE OBSERVATORY
 SITE NO. 2 - LIVINGSTON, LOUISIANA**

TITLE: **ELECTRICAL CORNER STATION LVEA AREAS 101, 103, 104 RECEPTACLE & POWER PLAN**

SCALE: **AS NOTED**

CONTRACT NUMBER: **PP150969**

PROJECT NUMBER: **8094**

LA-E-100