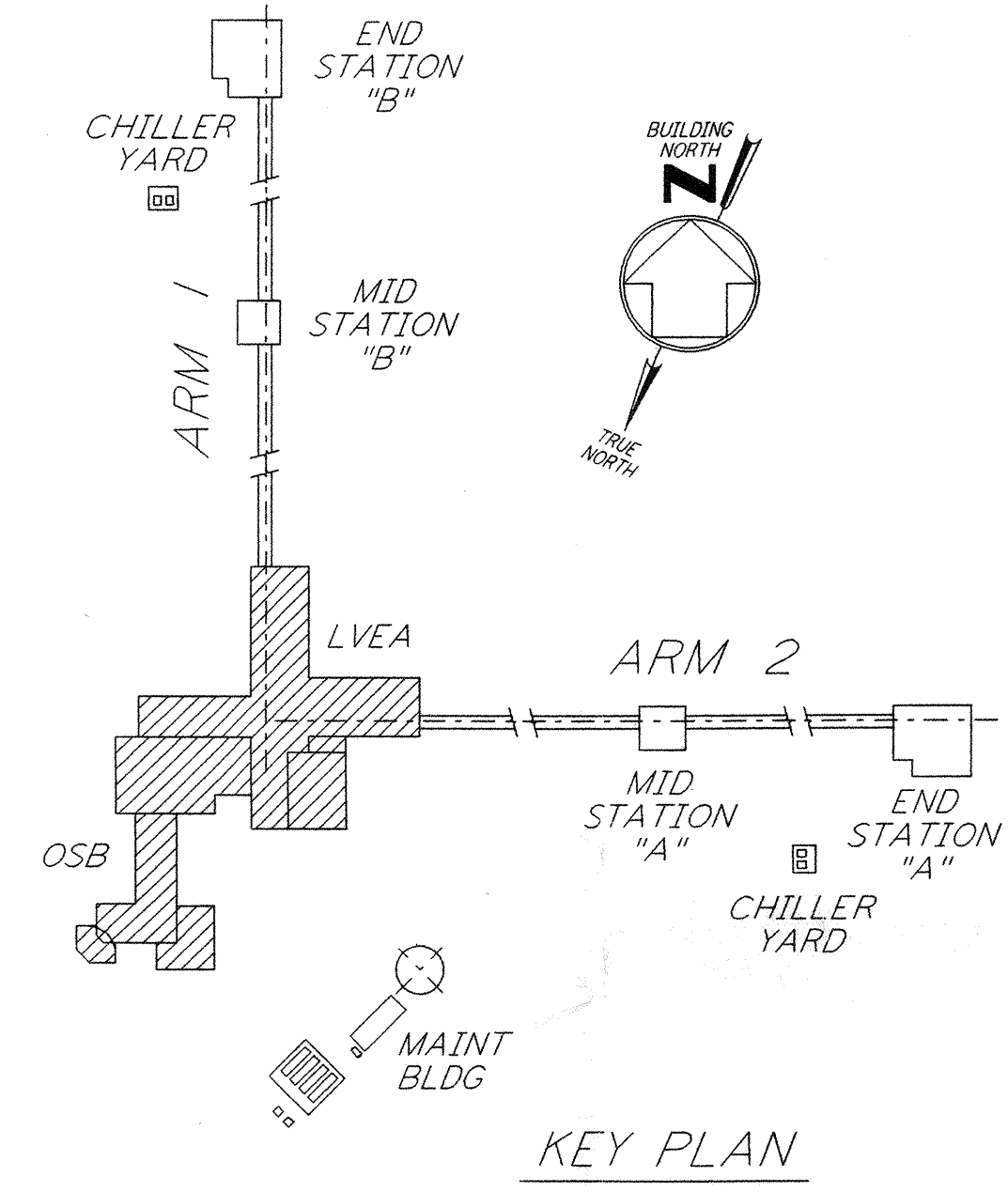


**PARTIAL ENLARGED PLAN**  
 1/8" = 1'-0"



0 8 16 24 32 40 48 56 64 FT  
 1/8" = 1'-0"

- NOTES:**
1. COMMUNICATIONS CONDUIT SHALL STUB UP INSIDE THE ACCESS FLOOR CAVITY TO AN ELEVATION THAT WILL PREVENT FLOODING OF CAVITY IF OUTDOOR UNDERGROUND CONDUIT RUNS ARE FILLED WITH WATER.
  2. PULL ROPE SHALL BE PROVIDED BETWEEN PULL BOXES AND STUB-UPS FOR EACH CONDUIT.
  3. DUCT BANK SHALL SLOPE DOWN AWAY FROM BUILDING AS SHOWN ON PLAN.
  4. CIRCUITS SHOW FEEDING THESE ITEMS ARE FROM PANEL L-CS-168-RP-01.
  5. CIRCUITS SHOW FEEDING THESE ITEMS ARE FROM PANEL L-CS-163-RP-01.

This document and the design it covers are the property of PARSONS. They are loaned only with the borrower's expressed written agreement that they will not be reproduced, copied, loaned, exhibited, or used in any other way, except by written consent from PARSONS to the borrower.

NO.	DATE	BY	CHKD	ENGR	PROJ	DESCRIPTION
2	8-7-98	JE	RDC	WV		ISSUED FOR AS-BUILT
1	2-28-97	J.G.	RDC	KCR	T.D.M.	GENERAL REVISIONS

ISSUED FOR CONSTRUCTION  
 DRAWN M. M. 11-15-96  
 CHECKED J. C. L. 7-24-96  
 ENGINEER K. C. R. 10-25-96  
 PROJ T. D. M. 11-15-96

**AS-BUILT DRAWINGS**

100 WEST WALNUT STREET  
 PASADENA, CALIFORNIA

CALIFORNIA INSTITUTE OF TECHNOLOGY  
 MASSACHUSETTS INSTITUTE OF TECHNOLOGY

**LIGO-D961006-02-0**

LASER INTERFEROMETER  
 GRAVITATIONAL-WAVE OBSERVATORY  
 SITE NO. 2 - LIVINGSTON, LOUISIANA

**ELECTRICAL CORNER STATION POWER & LIGHTING PARKING & OBSERVATION PLAN**

SHEET NUMBER: NONE  
 CONTRACT NUMBER: PPI50969  
 PROJECT NUMBER: 8094

**LA-E-104**