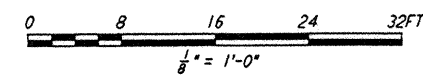
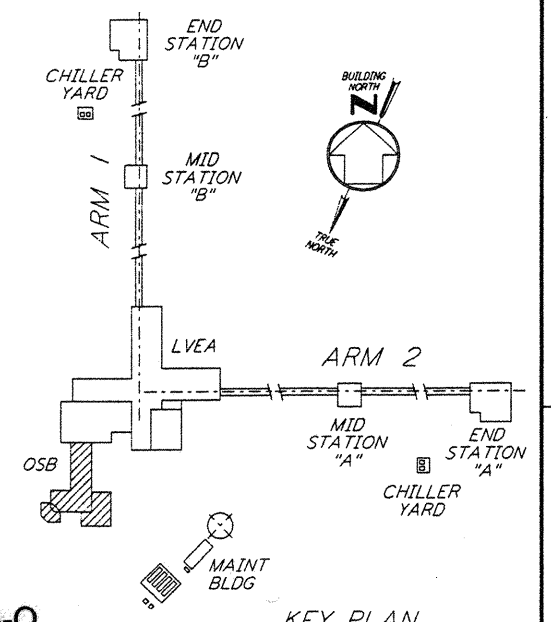
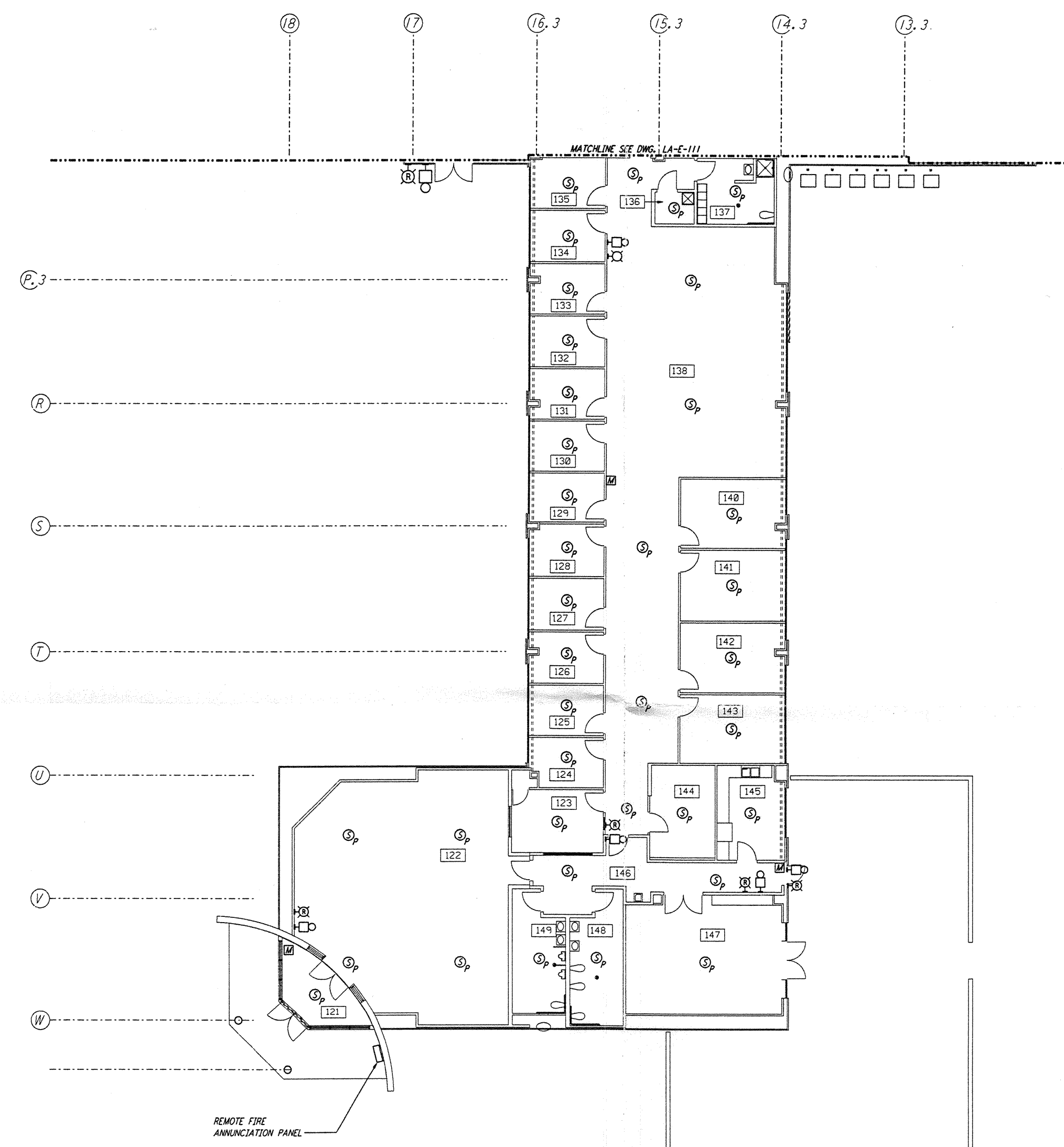
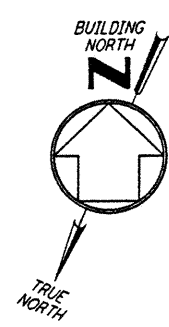


**NOTES:**

1. FOR PLAN SYMBOLS SEE DWG LA-E-002.
2. WIRING FOR FIRE DETECTION SHALL BE CLASS "A". FOR FIRE ALARM DEVICES SHALL BE CLASS "B". WIRING INSTALLED IN CONCEALED CONDUIT FOR FIRE DETECTION AND SECURITY SYSTEMS SHALL BE DONE BY OTHERS.
3. DUCT MOUNTED SMOKE DETECTORS SHALL BE PROVIDED WITH AN AUXILIARY RELAY CONTACT (N.C.) FOR EQUIPMENT SHUT-DOWN.
4. COORDINATE AHU LOCATIONS WITH DUCT MOUNTED SMOKE DETECTORS.



LIGO-D961012-B-0

KEY PLAN

This document and the design it covers are the property of PARSONS. They are loaned only with the borrower's expressed written agreement that they will not be reproduced, copied, loaned, exhibited, or used in any other way, except by written consent from PARSONS to the borrower.

This document and the design it covers are the property of PARSONS. They are loaned only with the borrower's expressed written agreement that they will not be reproduced, copied, loaned, exhibited, or used in any other way, except by written consent from PARSONS to the borrower.

301 JUN 13 04:29 PM '96 \$3.13002 J:\VLS\15\06\110\110.DWG

NO.	DATE	BY	CHKD	ENGR	PROJ	DESCRIPTION
B	6-14-96	JCL	JL	TDM		FINAL DESIGN REVIEW
A	10-31-95	JCL	JL	TDM		PRELIMINARY DESIGN REVIEW

DRAWN	M. M.
CHECKED	
ENGINEER	
PROJ	

**PARSONS**  
 100 WEST WALNUT STREET  
 PASADENA, CALIFORNIA

**LIGO**  
 CALIFORNIA INSTITUTE OF TECHNOLOGY  
 MASSACHUSETTS INSTITUTE OF TECHNOLOGY

LASER INTERFEROMETER  
 GRAVITATIONAL-WAVE OBSERVATORY  
 SITE NO. 2 - LIVINGSTON, LOUISIANA

ELECTRICAL  
 CORNER STATION  
 OSB OFFICE AREA FIRE DET  
 & SECURITY PLAN

AS NOTED PP150969 8094

**LA-E-110**