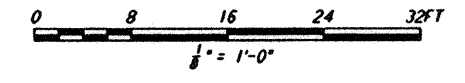
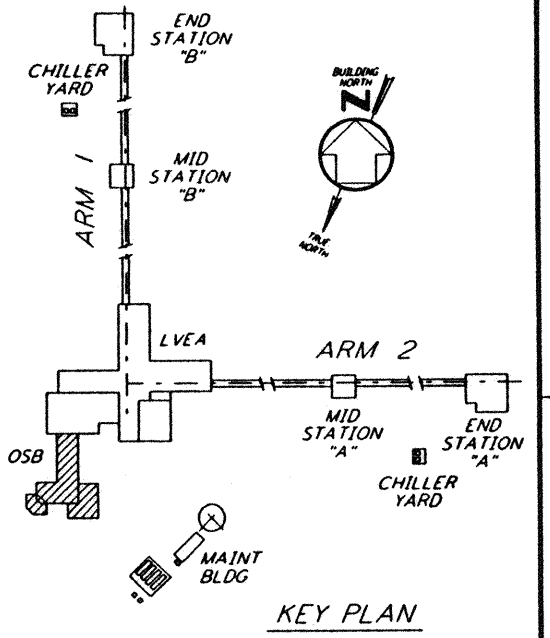
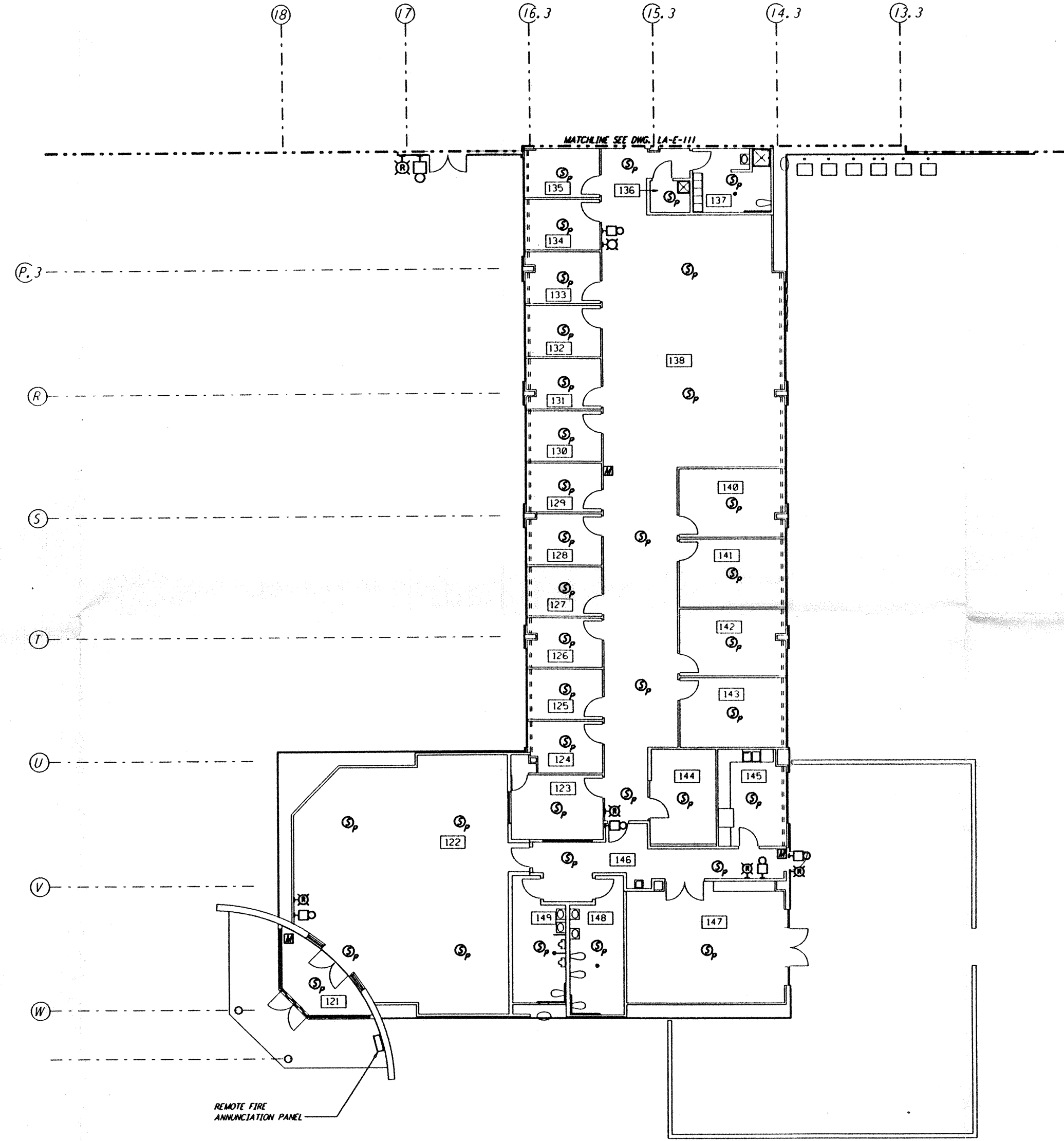


- NOTES:**
1. FOR PLAN SYMBOLS SEE DWG LA-E-002.
  2. WIRING FOR FIRE DETECTION SHALL BE CLASS "A". FOR FIRE ALARM DEVICES SHALL BE CLASS "B". WIRING INSTALLED IN CONCEALED CONDUIT FOR FIRE DETECTION AND SECURITY SYSTEMS SHALL BE DONE BY OTHERS.
  3. DUCT MOUNTED SMOKE DETECTORS SHALL BE PROVIDED WITH AN AUXILIARY RELAY CONTACT (N.C.) FOR EQUIPMENT SHUT-DOWN.
  4. COORDINATE AHU LOCATIONS WITH DUCT MOUNTED SMOKE DETECTORS.



This document and the design it covers are the property of PARSONS. They are loaned only with the borrower's expressed written agreement that they will not be reproduced, copied, loaned, exhibited, or used in any other way, except by written consent from PARSONS to the borrower.

NO.	DATE	BY	CHKD	ENGR	PROJ	DESCRIPTION
C	7-24-96	NM	JCL	TDM		ISSUED FOR BID
B	6-14-96	NM	JCL	RR	TDM	FINAL DESIGN REVIEW
A	10-31-95			TDM		PRELIMINARY DESIGN REVIEW

DRAWN	M. M.
CHECKED	
ENGINEER	
PROJ	

**PARSONS**  
 100 WEST WALNUT STREET  
 PASADENA, CALIFORNIA

**LIGO**  
 CALIFORNIA INSTITUTE OF TECHNOLOGY  
 MASSACHUSETTS INSTITUTE OF TECHNOLOGY

LASER INTERFEROMETER  
 GRAVITATIONAL-WAVE OBSERVATORY  
 SITE NO. 2 - LIVINGSTON, LOUISIANA

TITLE	SCALE	CONTRACT NUMBER	PROJECT NUMBER
ELECTRICAL CORNER STATION OSB OFFICE AREA FIRE DET & SECURITY PLAN	AS NOTED	PP150969	8094
LA-E-110			

LIGO-D961012-C-0

Tue Jul 23 16:37:12 1996 s3-v18b2 J:\PLOTS\QUEUES\18B2\EE110.PRF