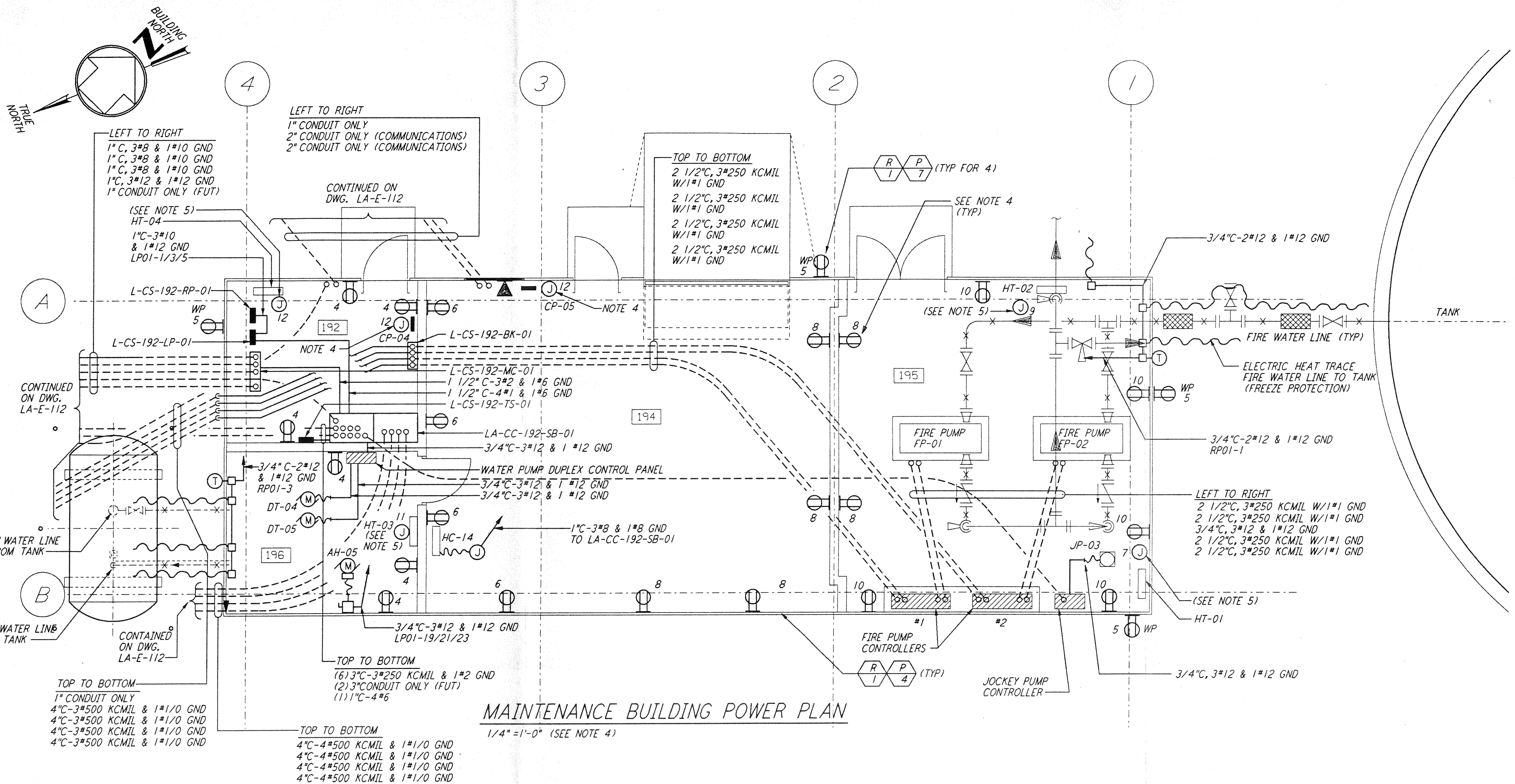
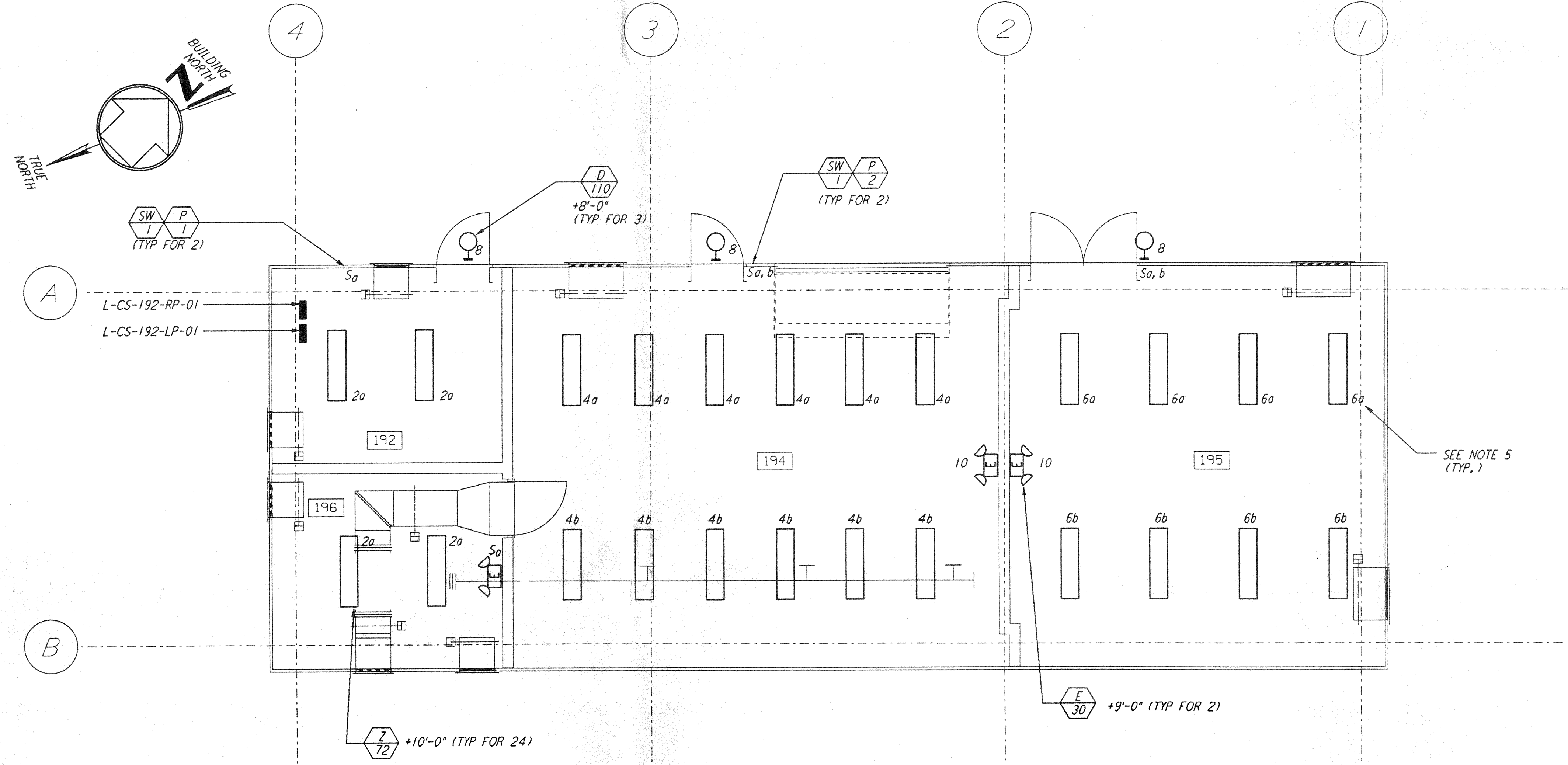


This document and the design it covers are the property of PARSONS. They are loaned only with the borrower's expressed written agreement that they will not be reproduced, copied, loaned, exhibited, or used in any other way, except by written consent from PARSONS to the borrower.



**MAINTENANCE BUILDING POWER PLAN**  
 1/4" = 1'-0" (SEE NOTE 4)



**MAINTENANCE BUILDING LIGHTING PLAN**  
 1/4" = 1'-0" (SEE NOTE 3)

**PANEL L-CS-192-RP-01**

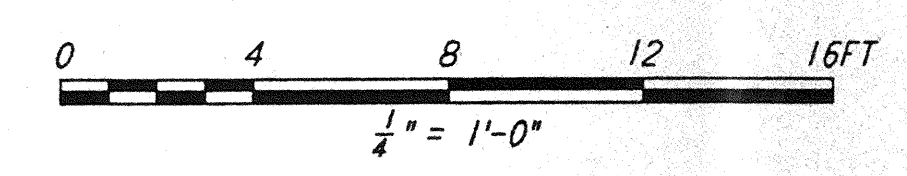
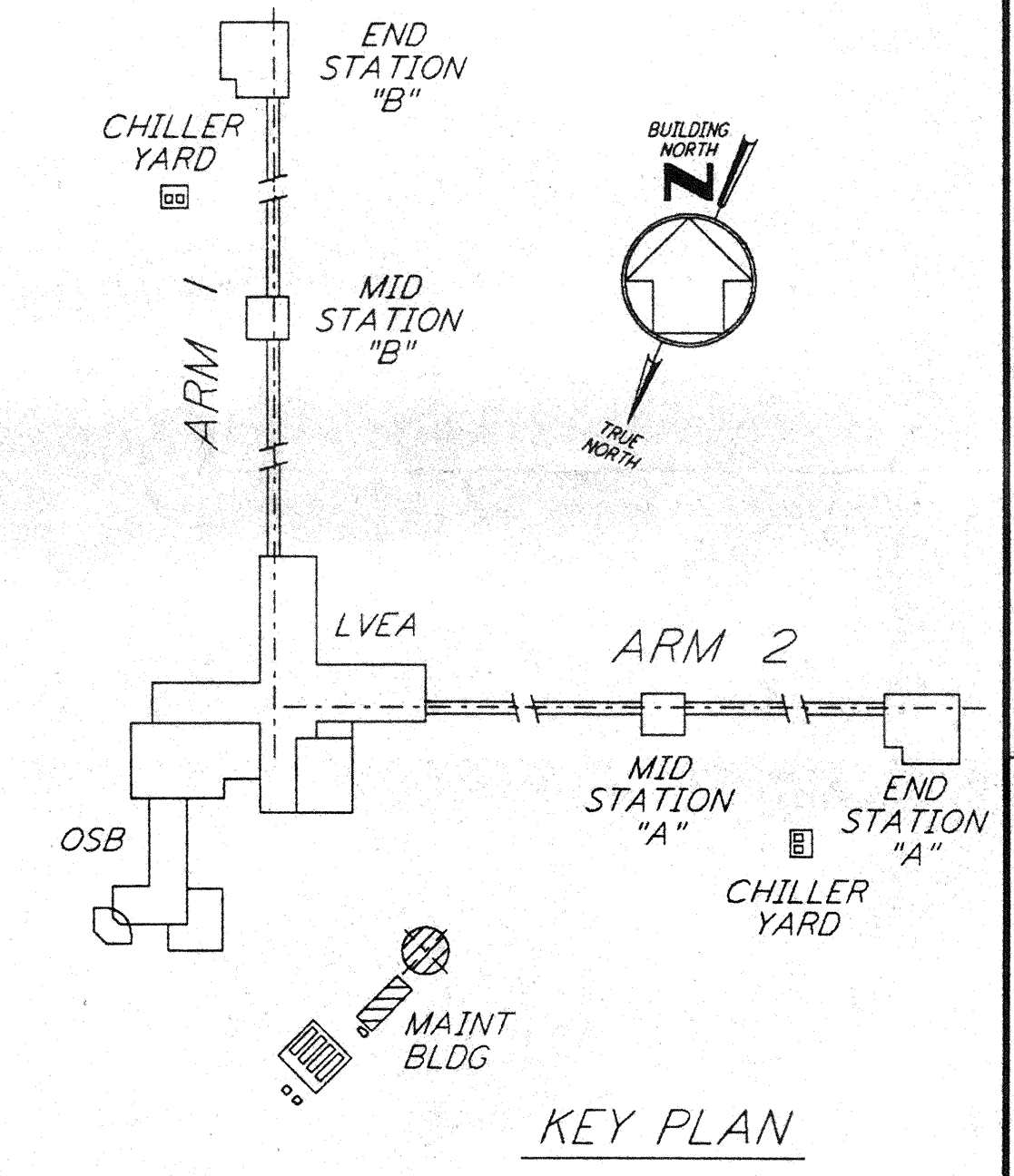
CKT	LOAD SERVED	SLOT	POLES	WIRE SIZE	BKR	PHASE LOAD (VA)			VOLT AMPS	BKR	WIRE SIZE	POLES	SLOT	LOAD SERVED	CKT							
						SURFACE																
						A	B	C														
1	F. W. HEAT TRACE (GFCD)	1	1	20	500	500		200	20	20	1	2	SPARE	2								
3	P. W. HEAT TRACE (GFCD)	3	1	20	200	200	200	1080	20	20	1	4	RECEPTS RM 192, 196	4								
5	RECEPTS OUTSIDE (GFCD)	5	1	20	720		720	720	20	20	1	6	RECEPTS RM 194	6								
7	SPARE	7	2	20		1880		1880	20	20	1	8	RECEPTS RM 194, 195	8								
9		9	-	-	-		900	900	20	20	1	10	RECEPTS RM 195	10								
11	SPARE	11	-	-	-		200	200	15	15	1	12	HVAC CONTROLS CP04, CP05	12								
TOTAL														1580	2180	1640						
TOTAL CONNECTED LOAD (VA)														5400								
														(AMPS)								

NOTE 2

**PANEL L-CS-192-LP-01**

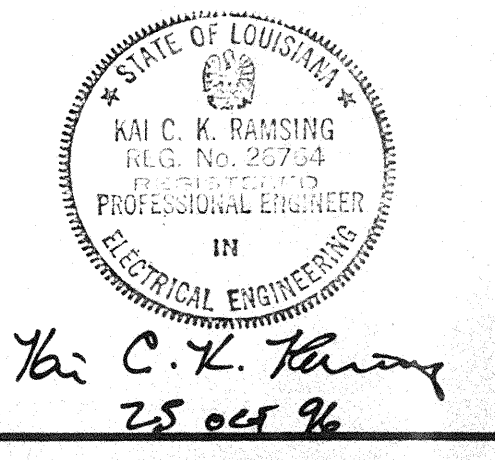
CKT	LOAD SERVED	SLOT	POLES	WIRE SIZE	BKR	PHASE LOAD (VA)			VOLT AMPS	BKR	WIRE SIZE	POLES	SLOT	LOAD SERVED	CKT						
						SURFACE															
						A	B	C													
1	L-CS-192-RP-01	1	3	30	15000	5000	200	200	15	15	1	2	LIGHTING RM 192, 196	2							
3		-	-	-	-	5000	864	864	15	15	1	4	LIGHTING RM 194	4							
5		-	-	-	-	5000	576	576	15	15	1	6	LIGHTING RM 195	6							
7	HEATER L-CS-195-HT-01	7	1	15	1500	1500	330	330	15	15	1	8	LIGHTING OUTSIDE	8							
9	HEATER L-CS-195-HT-02	9	1	15	1500	1500	60	60	15	15	1	10	EMERGENCY LIGHTING	10							
11	HEATER L-CS-195-HT-03	11	1	15	1500	1500	1500	1500	15	15	1	12	HEATER L-CS-196-HT-04	12							
13	SPARE	13	3	15					15	15	1	14	SPARE	14							
15		-	-	-	-				15	15	1	16	SPARE	16							
17		-	-	-	-				15	15	1	18	SPARE	18							
19	L-CS-191-AH-05	19	3	20	1500	500						20	SPACE	20							
21		21	-	-	-		500					22	SPACE	22							
23		23	-	-	-			500				24	SPACE	24							
TOTAL														7618	7924	9076					
TOTAL CONNECTED LOAD (VA)														24618							
														(AMPS)							

- NOTES:**
- FOR GENERAL NOTES AND REFERENCE DWG SEE LA-E-103.
  - PANEL L-CS-192-RP-01 SHALL BE SQUARE D CLASS 7400 MINI-POWER-ZONE, INTEGRAL 15KVA 3Ø TRANSFORMER, 12-POLE, TYPE OOB BREAKERS.
  - ALL LIGHTING CIRCUITS SHOWN ON THE LIGHTING PLAN ARE FROM PANEL L-CS-192-LP-01.
  - ALL RECEPTACLE CIRCUITS SHOWN ON THE POWER PLAN ARE FROM PANEL L-CS-192-RP-01 UNLESS OTHERWISE NOTED.
  - CIRCUITS SHOWN FEEDING THESE ITEM ARE FROM PANEL L-CS-192-LP-01.



NO.	DATE	BY	CHKD	ENGR	PROJ	DESCRIPTION

ISSUED FOR CONSTRUCTION		
DRAWN	M. M.	11-15-96
CHECKED	JCL	7-24-96
ENGINEER		
PROJ		



**PARSONS**  
 100 WEST WALNUT STREET  
 PASADENA, CALIFORNIA

**LIGO**  
 CALIFORNIA INSTITUTE OF TECHNOLOGY  
 MASSACHUSETTS INSTITUTE OF TECHNOLOGY

LASER INTERFEROMETER  
 GRAVITATIONAL-WAVE OBSERVATORY  
 SITE NO. 2 - LIVINGSTON, LOUISIANA

**ELECTRICAL CORNER STATION CHILLER PLANT & MAINT BLDG POWER & LIGHTING PLANS**

AS NOTED PPI 50969 8094  
**LA-E-113**