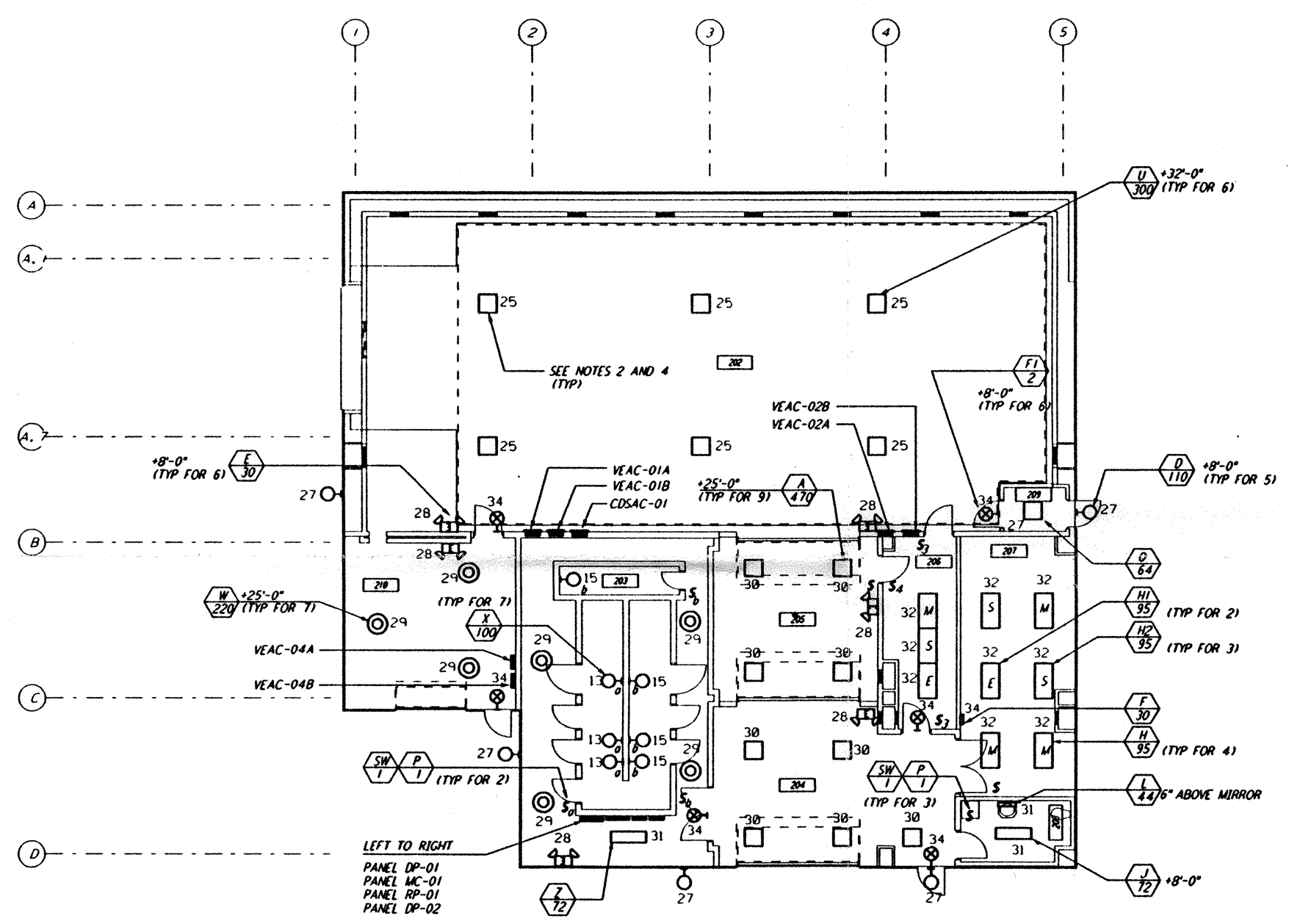
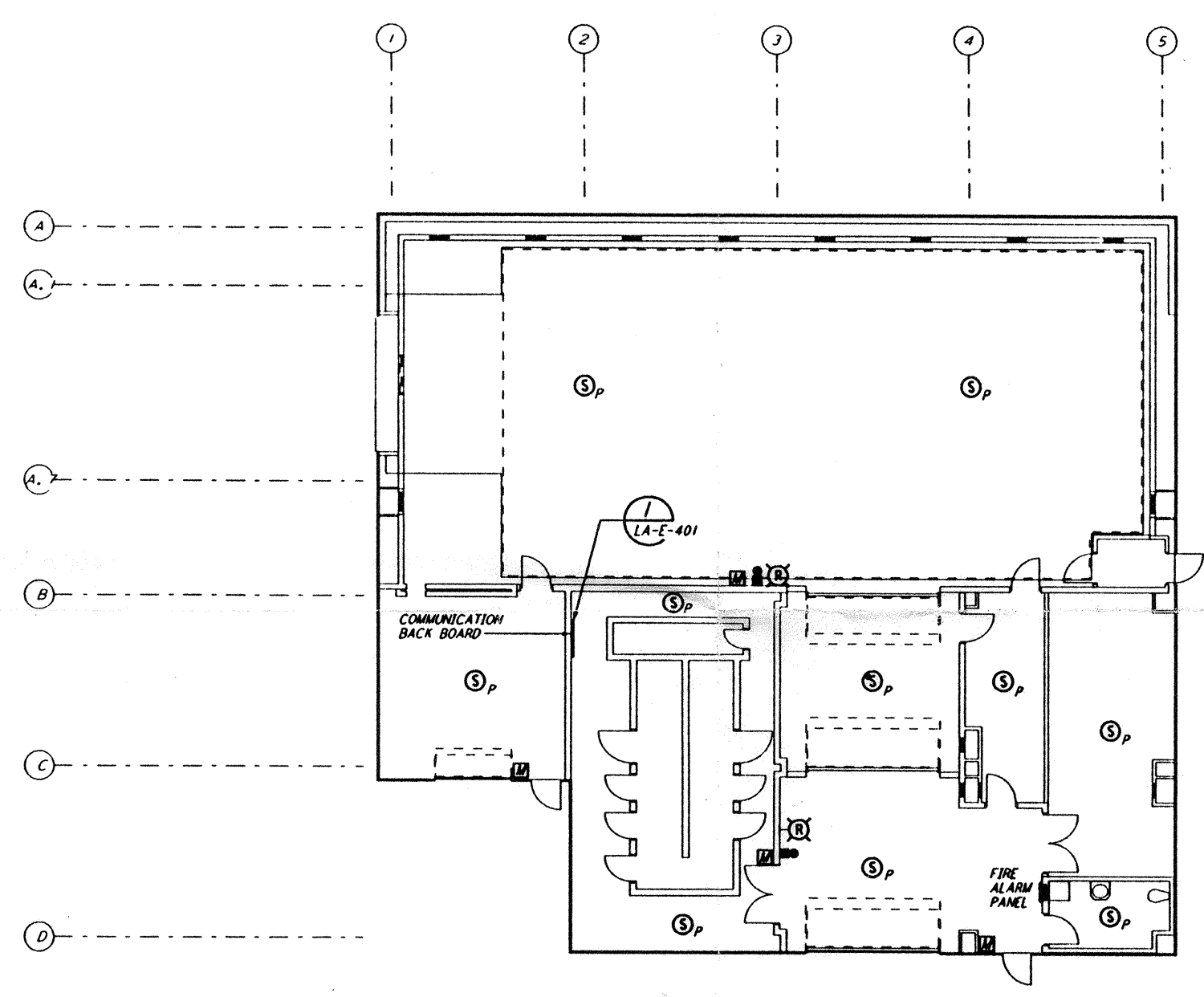


- NOTES:**
- FOR GENERAL NOTES SEE DRAWINGS LA-E-102.
 - ALL CIRCUITS SHOWN ON THIS DRAWING ARE FROM PANEL DP-02 UNLESS OTHERWISE NOTED.
 - FOR PANEL SCHEDULES SEE DRAWING LA-E-205 AND LA-E-206.
 - FOR FIXTURE LOCATION SEE ARCHITECTURAL REFLECTED CEILING PLAN ON DRAWING LA-A-221.
 - FOR FIRE DETECTION NOTES SEE DRAWING LA-E-110.
 - ALL LIGHTING CIRCUITS SHALL HAVE HOME RUN TO PANEL DP-02 EXCEPT CIRCUITS #13 & #15 SHALL HOME RUN TO PANEL RP-01.

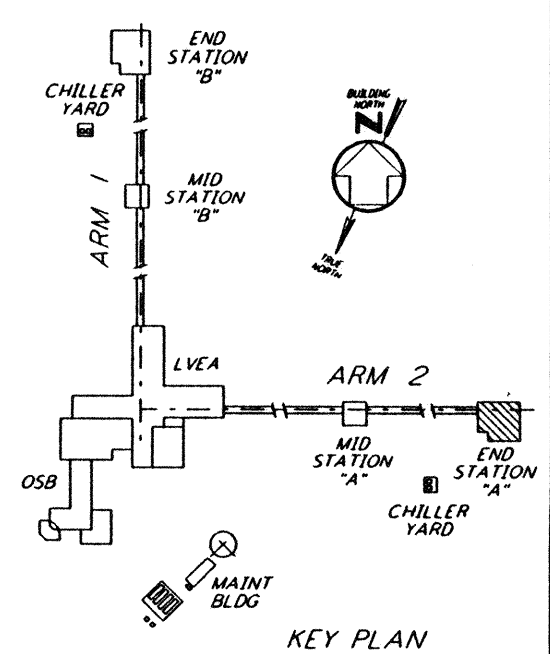
This document and the design it covers are the property of PARSONS. They are loaned only with the borrower's expressed written agreement that they will not be reproduced, copied, loaned, exhibited, or used in any other way, except by written consent from PARSONS to the borrower.



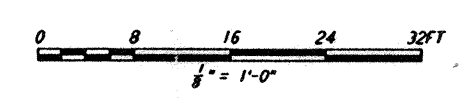
LIGHTING PLAN
SEE NOTE 6



COMMUNICATIONS AND FIRE DETECTION PLAN



KEY PLAN



NO.	DATE	BY	CHKD	ENGR	PROJ	DESCRIPTION
C	7-24-96	MM	JCL	TR	TDM	ISSUED FOR BID
B	6-14-96	MM	JCL	KR	TDM	FINAL DESIGN REVIEW
A	10-31-95				TDM	PRELIMINARY DESIGN REVIEW

DRAWN	M. M.
CHECKED	
ENGINEER	
PROJ	

PARSONS
100 WEST WALNUT STREET
PASADENA, CALIFORNIA

LIGO
CALIFORNIA INSTITUTE OF TECHNOLOGY
MASSACHUSETTS INSTITUTE OF TECHNOLOGY

LASER INTERFEROMETER
GRAVITATIONAL-WAVE OBSERVATORY
SITE NO. 2 - LIVINGSTON, LOUISIANA

**ELECTRICAL
END STATION A
LIGHTING, COMMUNICATIONS
& FIRE DETECTION PLAN**

AS NOTED PPI 50969 8094
SHEET NUMBER
LA-E-201

Tue Jul 23 18:03:22 1996 S3-V18B2 J:\PLOTS\QUEUES\18B2\EE201.PRF