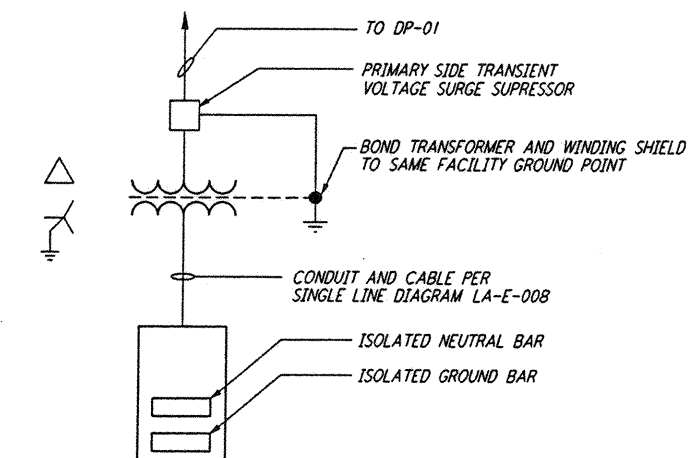
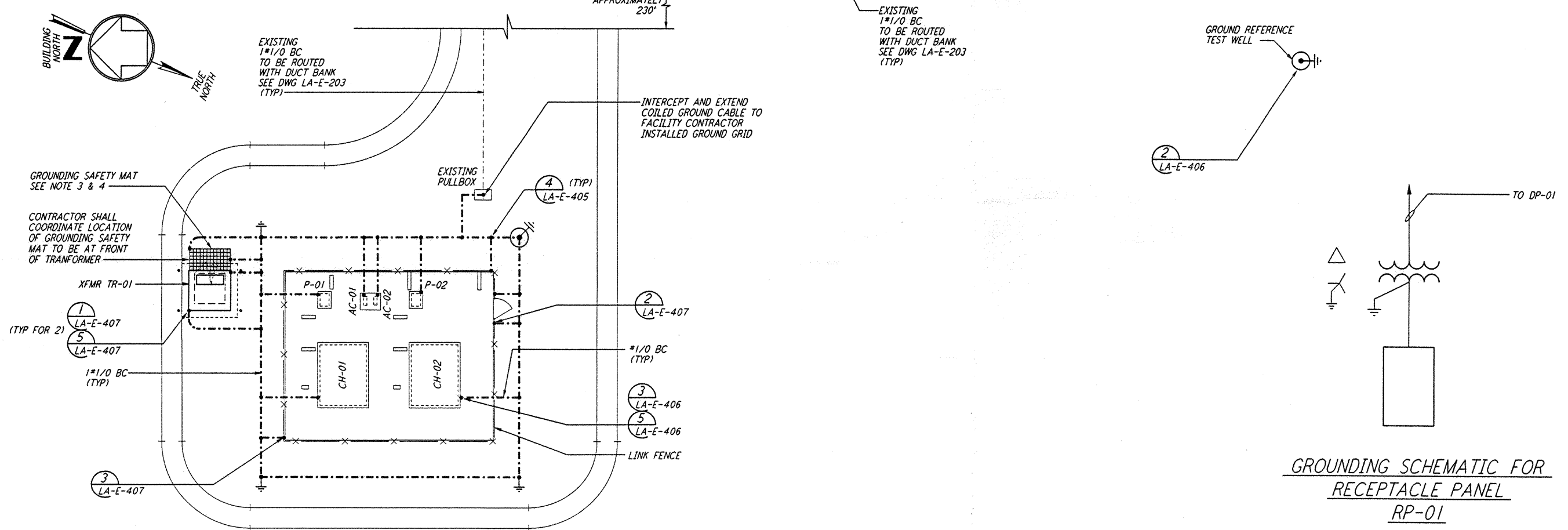


NOTES:

- FOR GENERAL NOTES SEE DWG. LA-E-103.
- CONNECT GROUNDING CONDUCTOR TO REBAR (BY OTHERS) AT BOTTOM OF FOUNDATION. REBAR SHALL BE AT LEAST 20 FEET LONG.
- GROUNDING MAT FOR PERSONNEL PROTECTION SHALL BE A PREFABRICATED 4'-0" X 6'-0" MAT WITH A 6" X 6" GRID, 40% CONDUCTIVITY COPPERWELD, WITH CENTER WIRE # 1/0 AWG, ERICO MFR. CABLE TO MESH TYPE FT, MOLD PTC-1G2C, WELD METAL #65.
- GROUNDING MAT SHALL BE INSTALLED 12" DEEP MIN. ADJACENT TO HIGH VOLTAGE PRIMARY SIDE.
- SEE CIVIL DRAWING LA-C-021 FOR ACTUAL LOCATION OF CHILLERS, PUMPS AND TRANSFORMER.
- SEE SPECIFICATION SECTION 16670 FOR LIGHTNING PROTECTION MATERIAL.
- GROUND CONNECTION TO STRUCTURAL STEEL SHALL BE EXOTHERMIC WELD TYPE, AND APPROPRIATE FOR THE CABLE AND STRUCTURAL STEEL.
- COIL AND TAPE GROUND CONDUCTOR AT TANK FOUNDATION, FOR FUTURE CONNECTION BY TANK VENDOR.

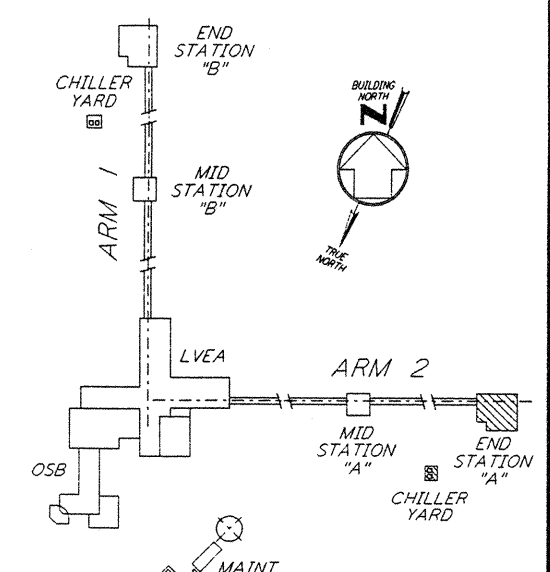


GROUNDING SCHEMATIC FOR CDSAC-01 PANEL

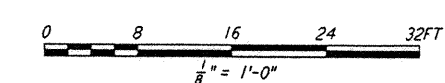


GROUNDING CHILLER PLAN

GROUNDING SCHEMATIC FOR RECEPTACLE PANEL RP-01



KEY PLAN



LIGO-D961026-B-0

not be reproduced, copied, loaned, exhibited, or used in any other way, except by written consent from PARSONS to the borrower.

This document and the design it covers are the property of PARSONS. They are loaned only with the borrower's expressed written agreement that they will

ENR JUN 20 1996 11:20 AM 1170 537139DC 45VLUISURE13VLRKTECH207P

NO.	DATE	BY	CHKD	ENGR	PROJ	DESCRIPTION
B	6-14-96	JCL	TDM			FINAL DESIGN REVIEW
A	10-31-95		TDM			PRELIMINARY DESIGN REVIEW

DRAWN	M. M.
CHECKED	
ENGINEER	
PROJ	

PARSONS
100 WEST WALNUT STREET
PASADENA, CALIFORNIA

LIGO
CALIFORNIA INSTITUTE OF TECHNOLOGY
MASSACHUSETTS INSTITUTE OF TECHNOLOGY

LASER INTERFEROMETER
GRAVITATIONAL-WAVE OBSERVATORY
SITE NO. 2 - LIVINGSTON, LOUISIANA

ELECTRICAL
END STATION A
LIGHTNING & GROUNDING
PLAN

SCALE AS NOTED
CONTRACT NUMBER PP150969
PROJECT NUMBER 8094
SHEET NUMBER LA-E-202
REVISIONS B