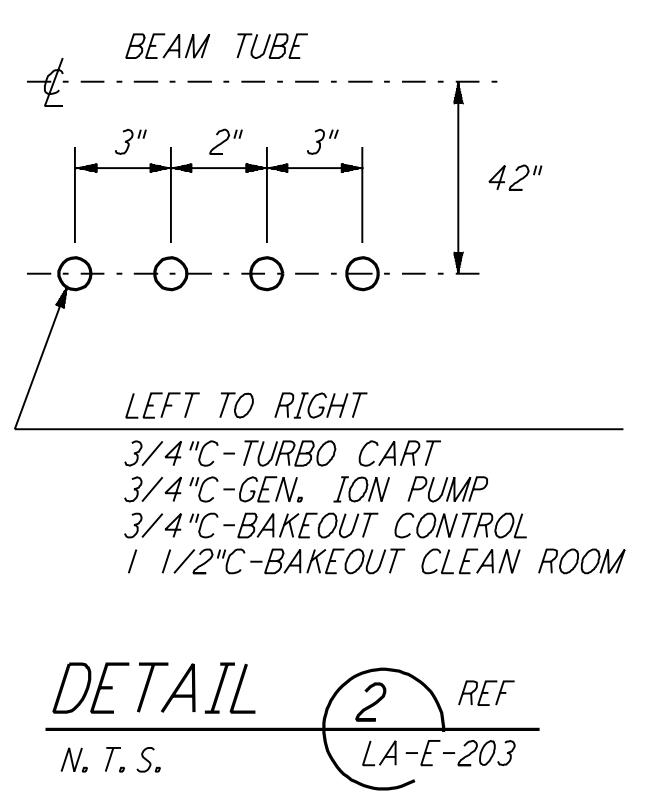
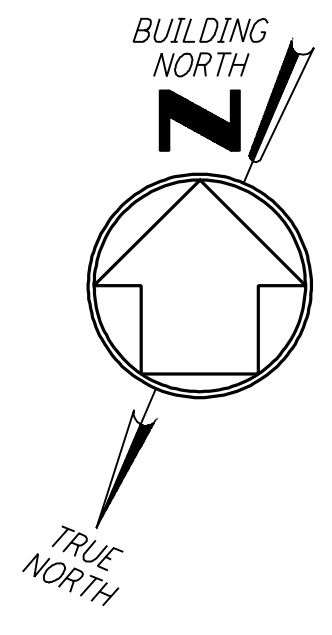
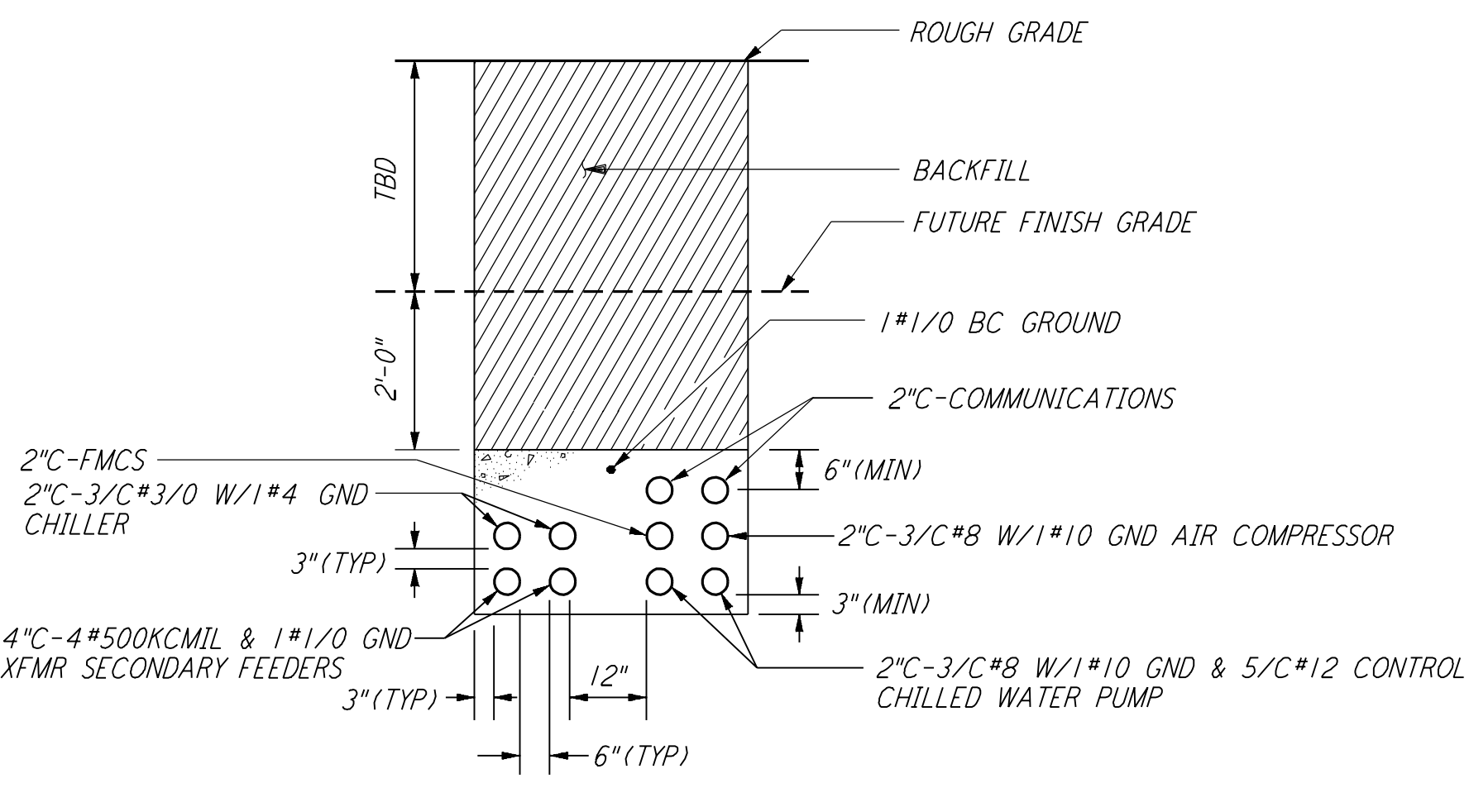


This document and the design it covers are the property of PARSONS. They are loaned only with the borrower's expressed written agreement that they will not be reproduced, copied, loaned, exhibited, or used in any other way, except by written consent from PARSONS to the borrower.

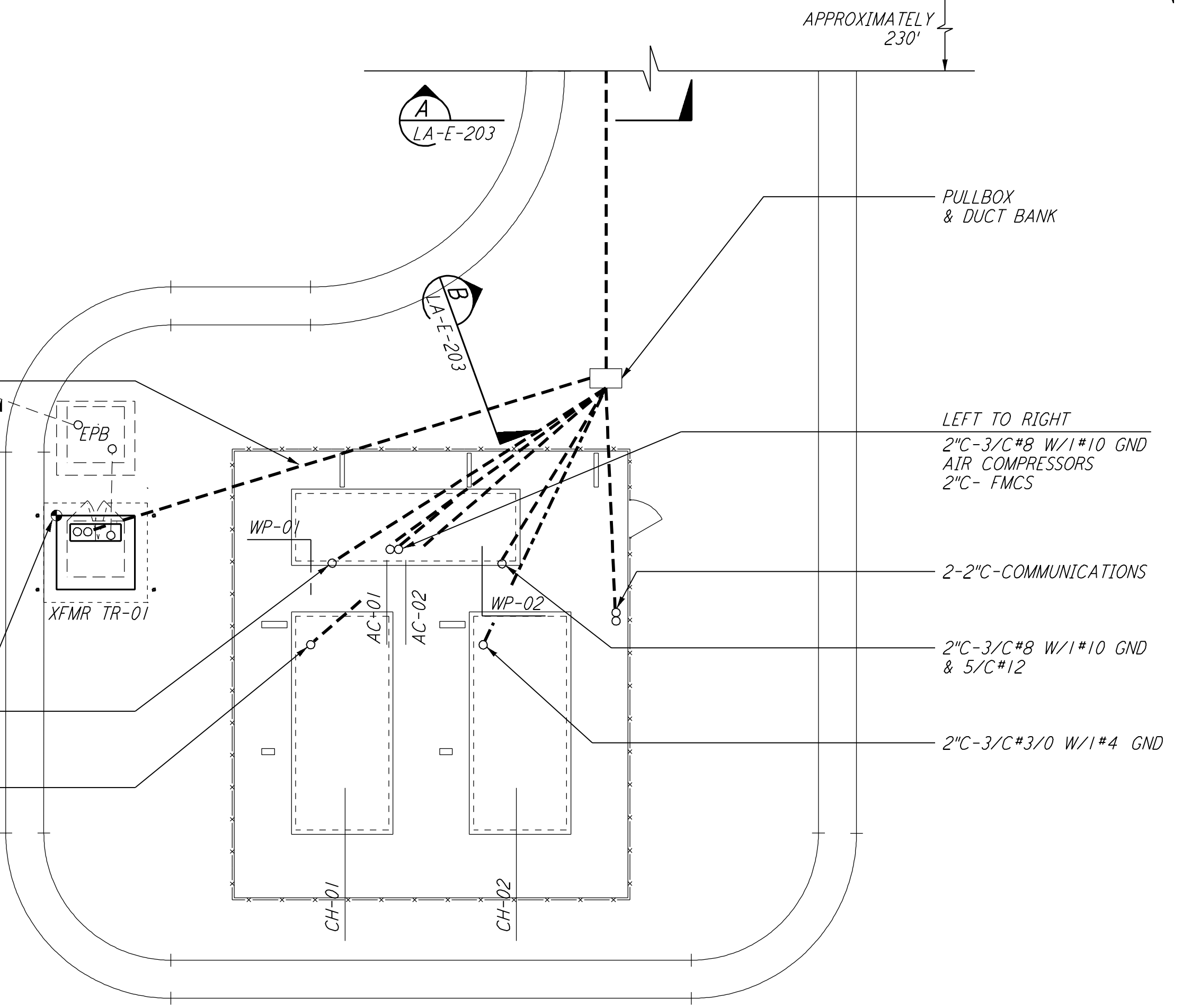
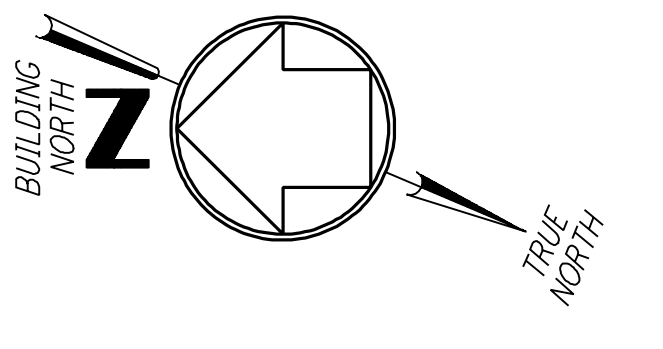


DETAIL 1 REF LA-E-203
N.T.S.

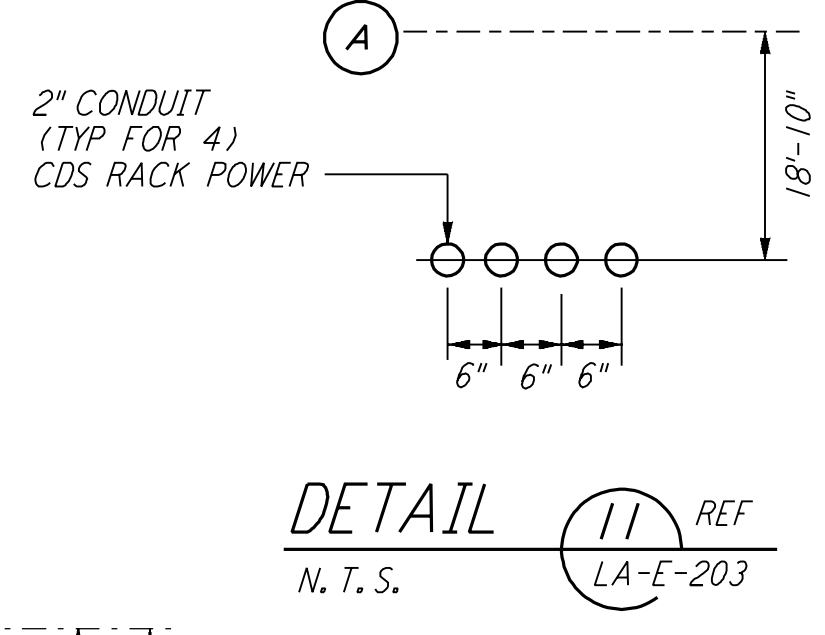
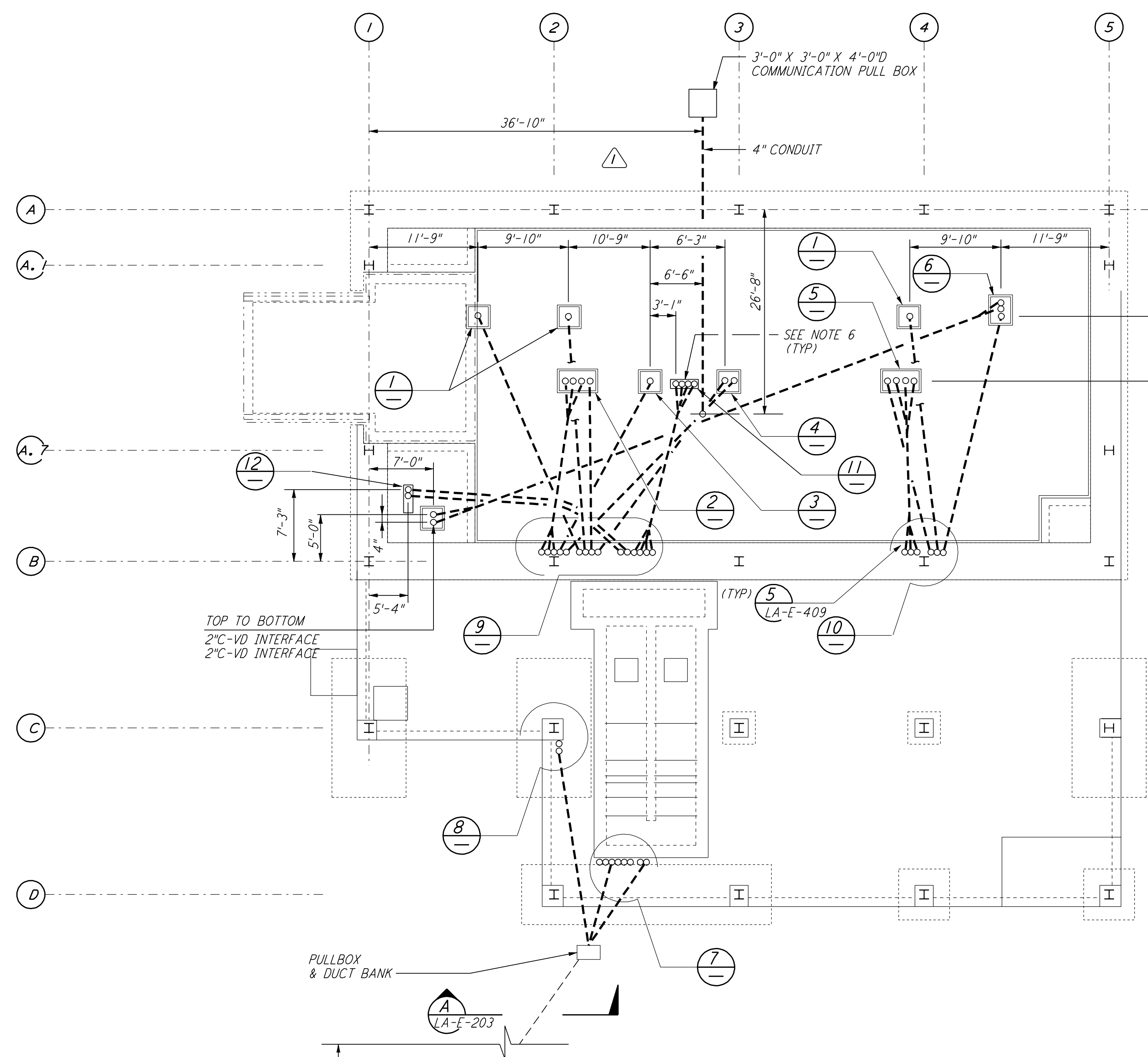
DETAIL 2 REF LA-E-203
N.T.S.



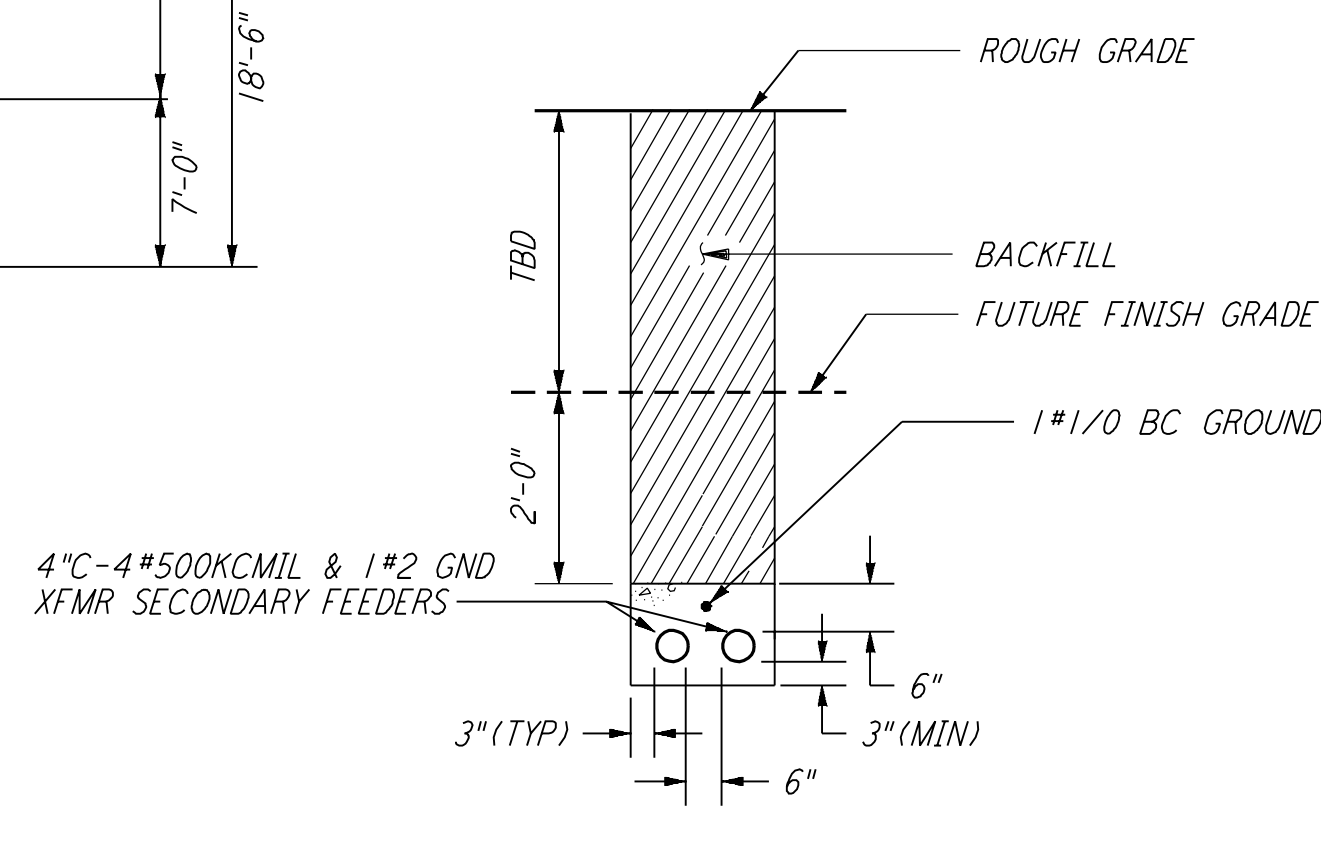
EXIST DUCT BANK SECTION A REF LA-E-203
N.T.S.



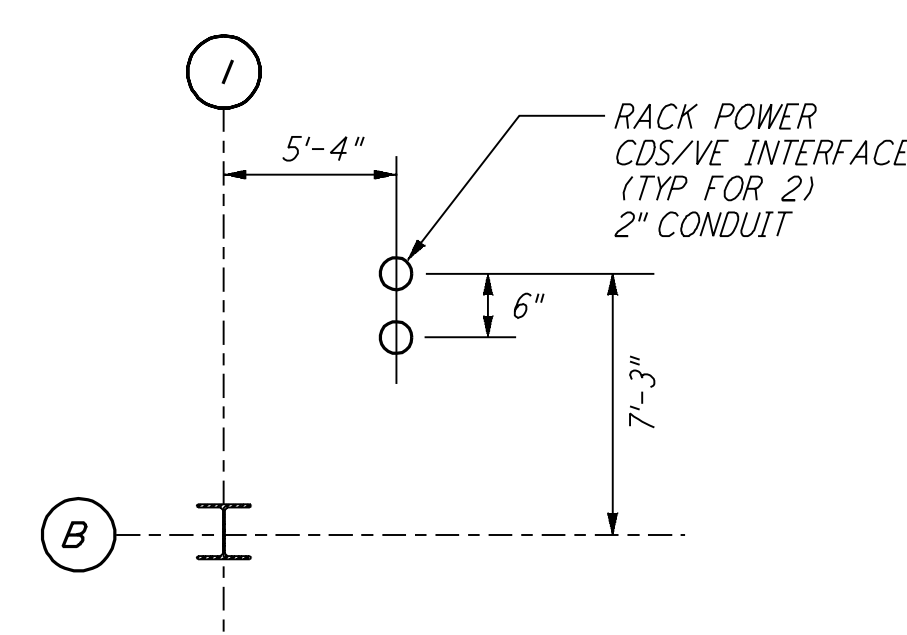
UNDERGROUND CHILLER PLAN



DETAIL 11 REF LA-E-203
N.T.S.

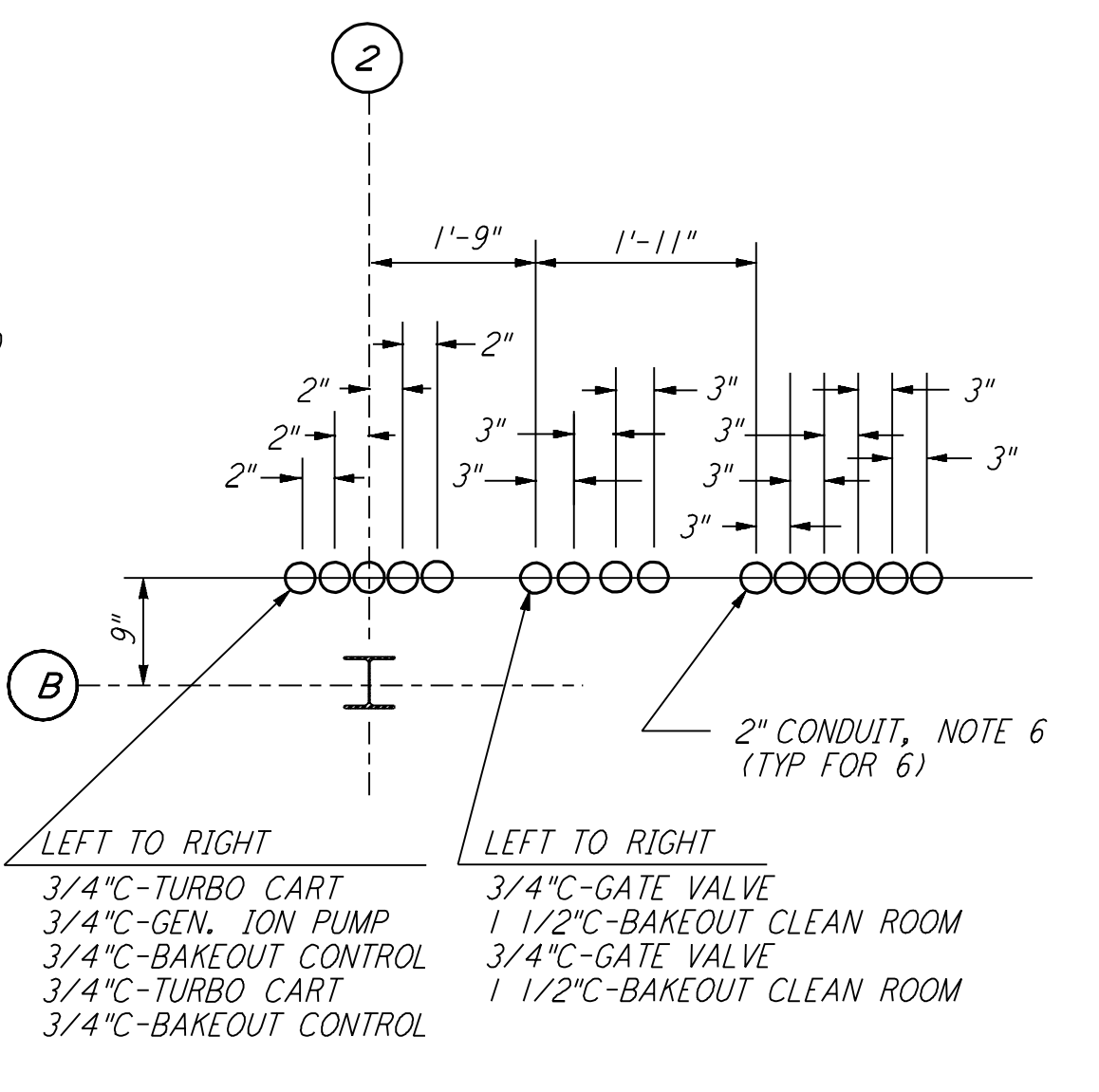


DUCT BANK SECTION B REF LA-E-203
N.T.S.

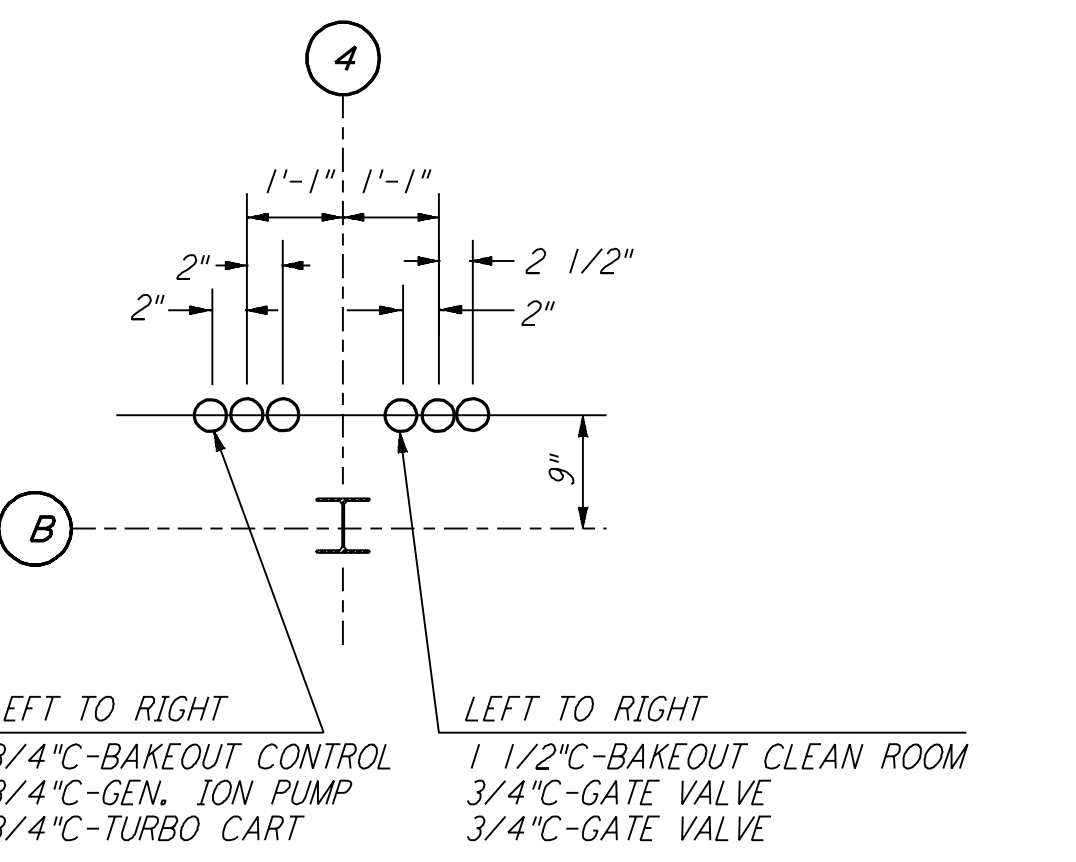


DETAIL 12 REF LA-E-203
N.T.S.

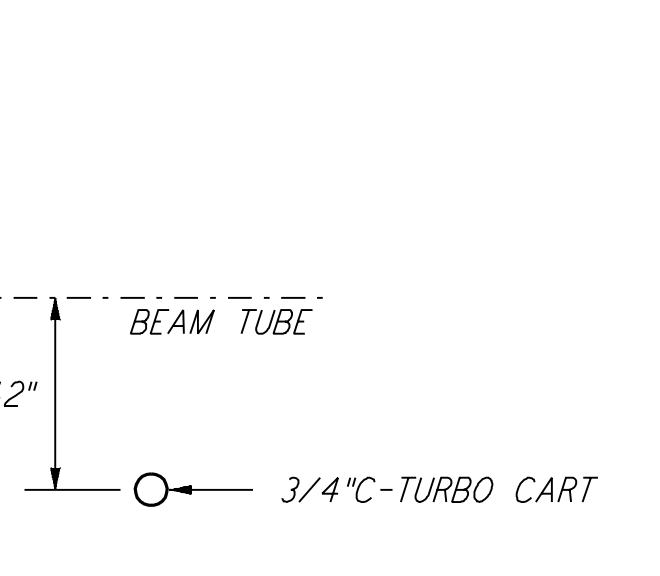
- NOTES:**
- FOR STANDARD SYMBOLS, ABBREVIATIONS AND ACRONYMS SEE DWG. LA-E-001.
 - FOR ELECTRICAL SYMBOLS SEE DWG. LA-E-002.
 - FOR STANDARD INSTALLATION DETAILS SEE DWG. LA-E-405 THRU LA-E-407.
 - FOR CABLE TYPE DESCRIPTION SEE DWG. LA-E-007.
 - ALL DUCTBANK RUNS ARE SHOWN DIAGRAMMATICALLY ONLY, CONTRACTOR SHALL COORDINATE INSTALLATION WITH OTHER DISCIPLINES, TO USE COMMON TRENCH, BACK FILL ETC.
 - ARRANGEMENT OF CDS POWER CONDUIT STUB-UPS SHALL BE COORDINATED WITH THE VACUUM EQUIPMENT VENDOR.



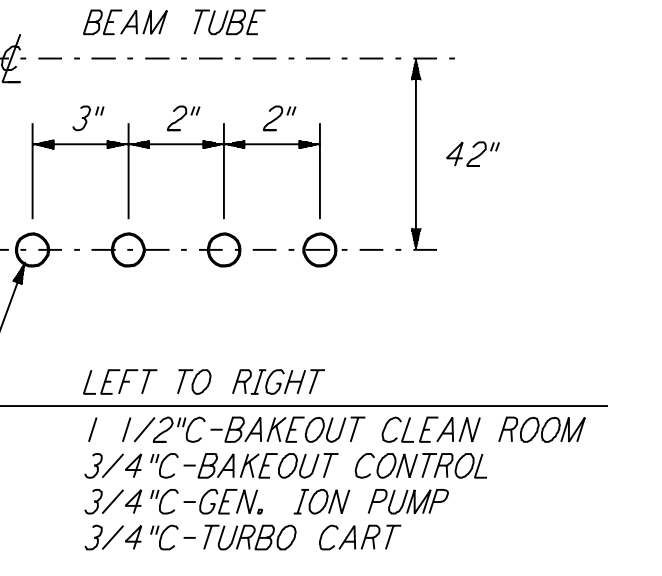
DETAIL 9 REF LA-E-203
N.T.S.



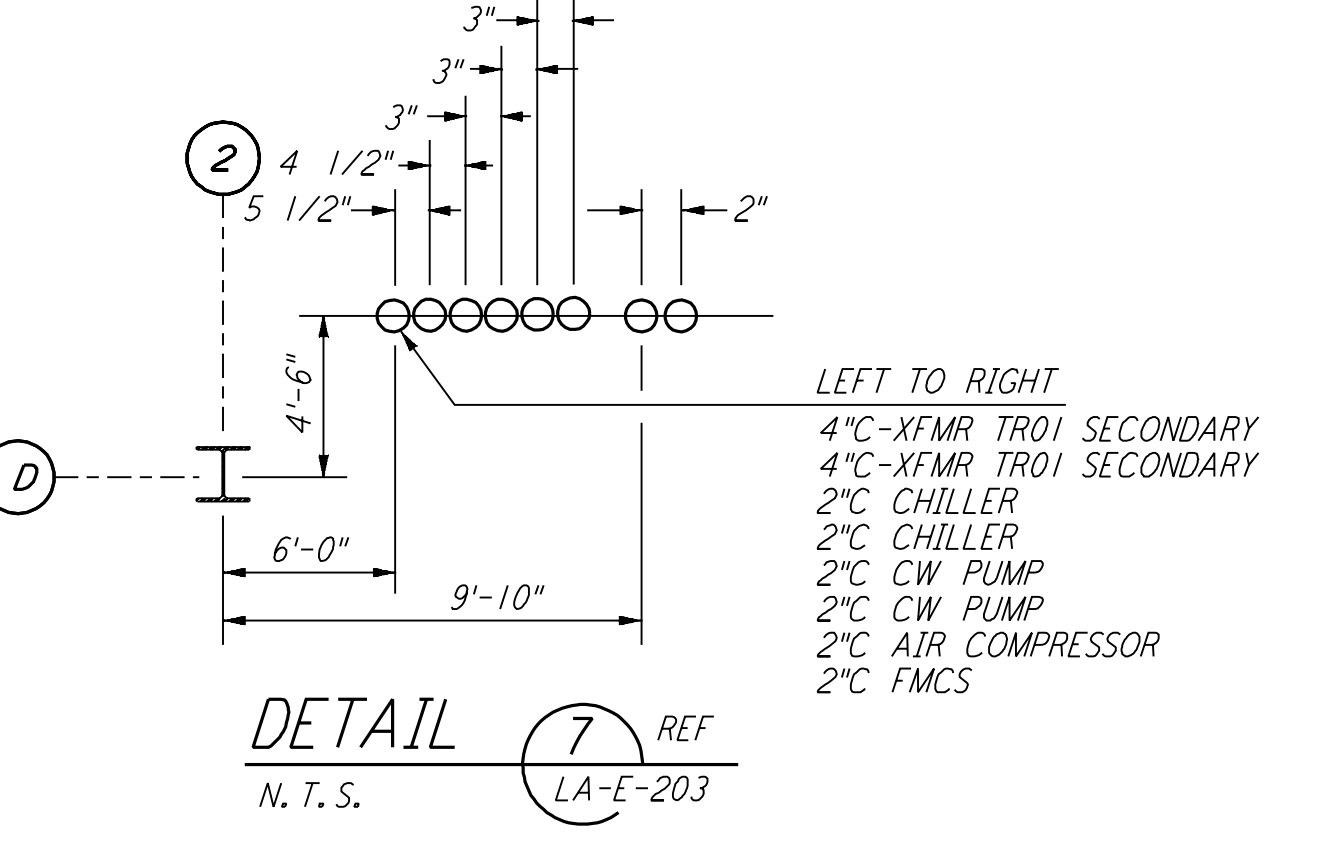
DETAIL 10 REF LA-E-203
N.T.S.



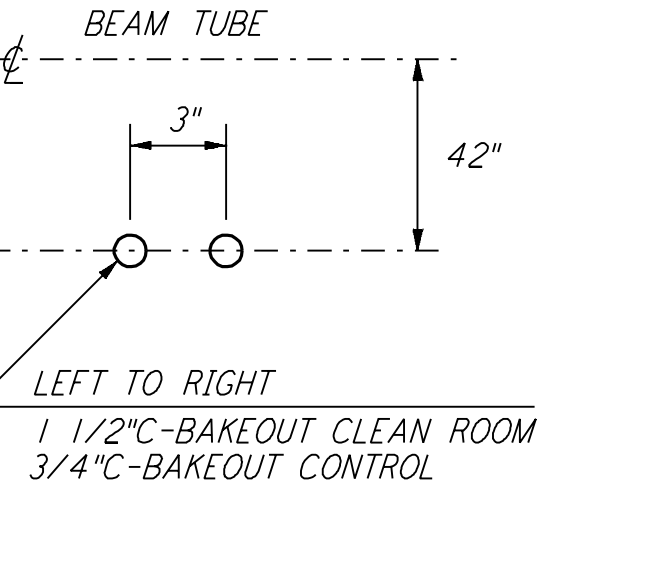
DETAIL 3 REF LA-E-203
N.T.S.



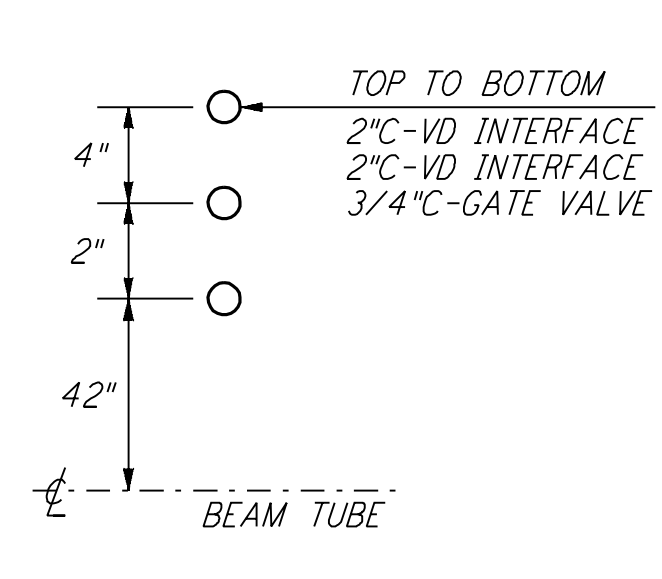
DETAIL 5 REF LA-E-203
N.T.S.



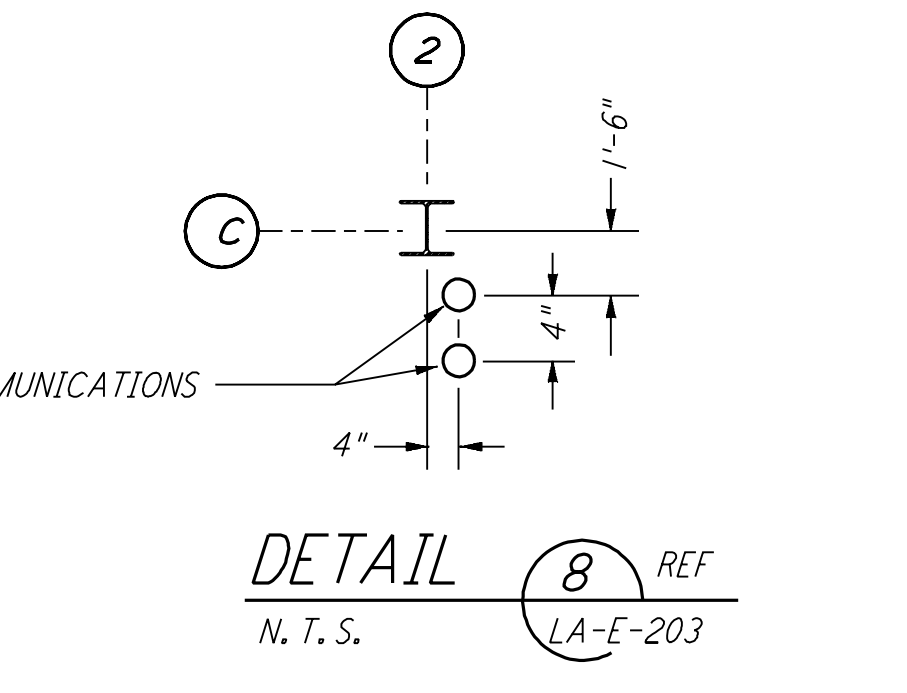
DETAIL 7 REF LA-E-203
N.T.S.



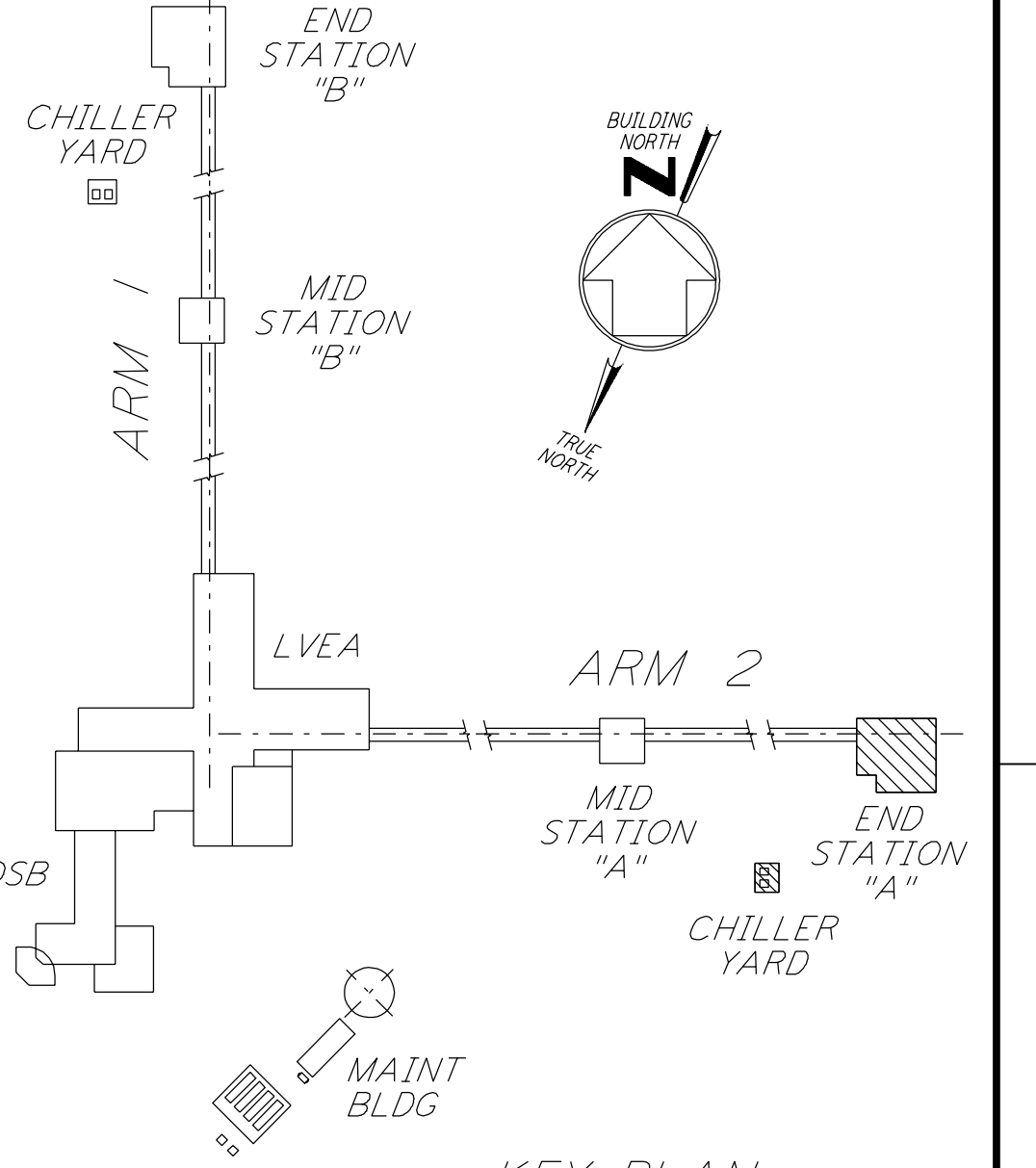
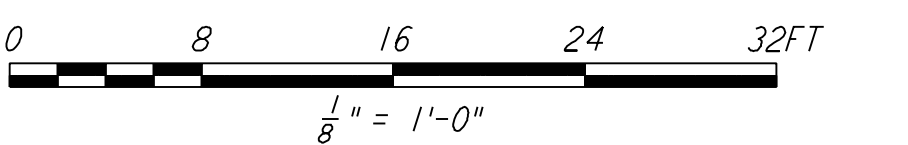
DETAIL 4 REF LA-E-203
N.T.S.



DETAIL 6 REF LA-E-203
N.T.S.



DETAIL 8 REF LA-E-203
N.T.S.



KEY PLAN
LIGO-D961027-02-0

NO.	DATE	BY	CHKD	ENGR	PROJ	DESCRIPTION
2	8-7-98	JE				ISSUED FOR AS-BUILT
1	3-17-97	JG	RDC	KR	T.D.M.	REVISED VACUUM EQUIP. LOCATIONS

ISSUED FOR CONSTRUCTION			
DRAWN	M.M.	11-15-96	
CHECKED	JCL	7-24-96	
ENGINEER	KCR	10-25-96	
PROJ	T.T.D.M.	11-15-96	

AS-BUILT DRAWINGS

PARSONS
 100 WEST WALNUT STREET
 PASADENA, CALIFORNIA

LIGO
 CALIFORNIA INSTITUTE OF TECHNOLOGY
 MASSACHUSETTS INSTITUTE OF TECHNOLOGY

LASER INTERFEROMETER
 GRAVITATIONAL-WAVE OBSERVATORY
 SITE NO. 2 - LIVINGSTON, LOUISIANA

ELECTRICAL END STATION A UNDERGROUND PLAN

AS NOTED PP150969 8094
LA-E-203