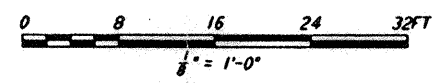
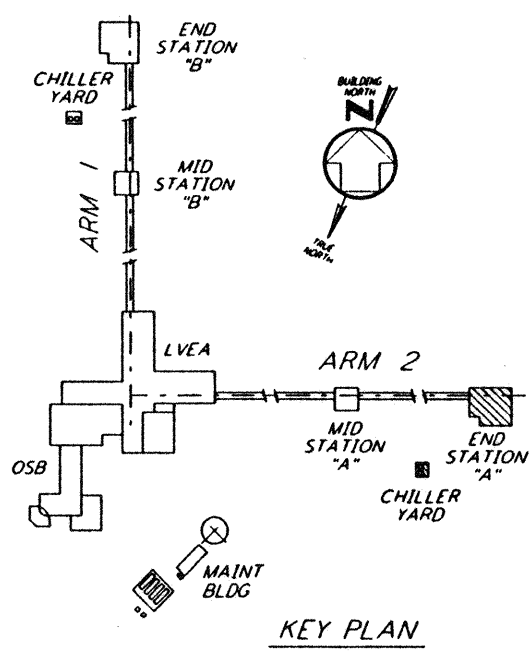
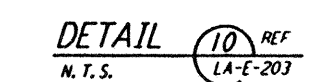
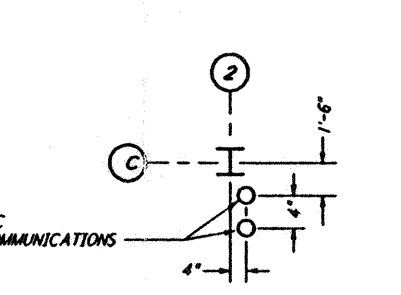
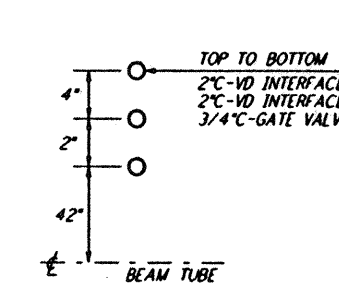
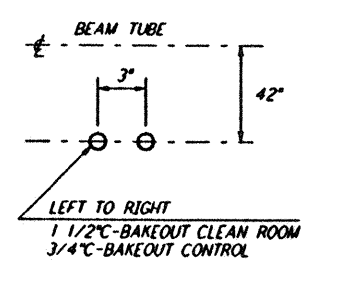
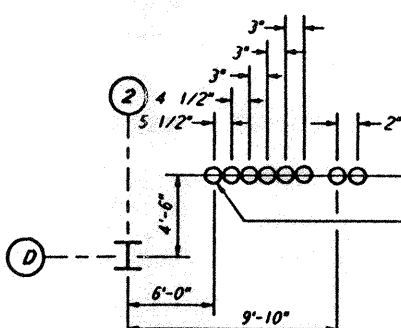
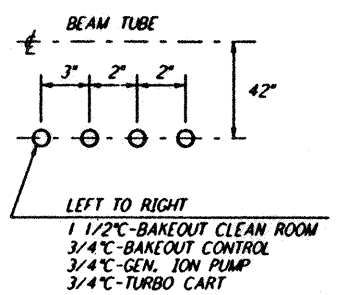
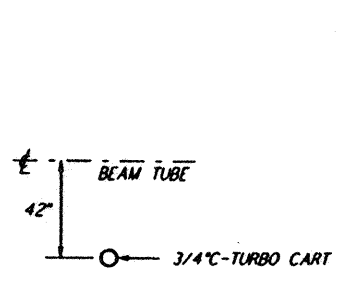
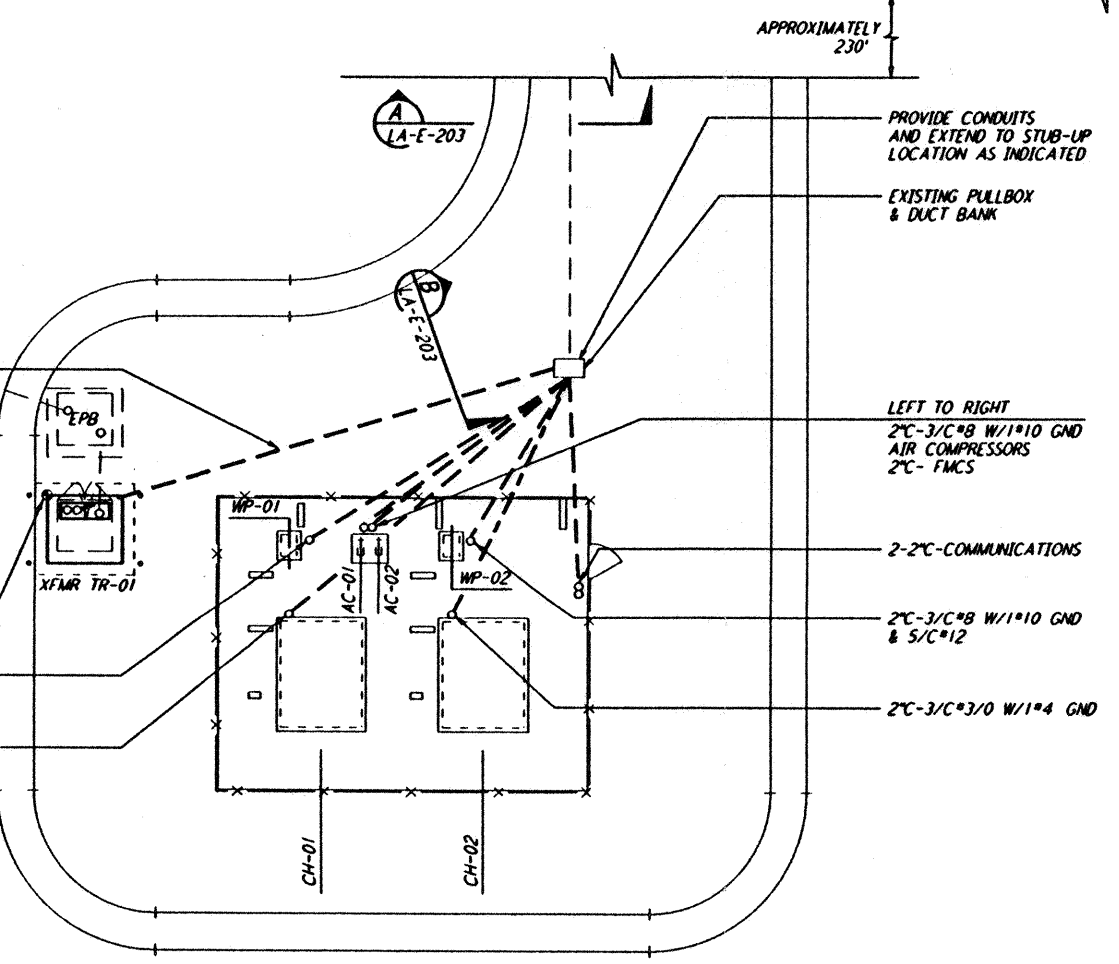
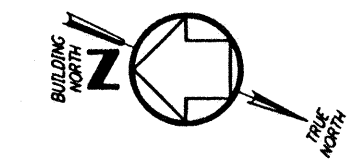
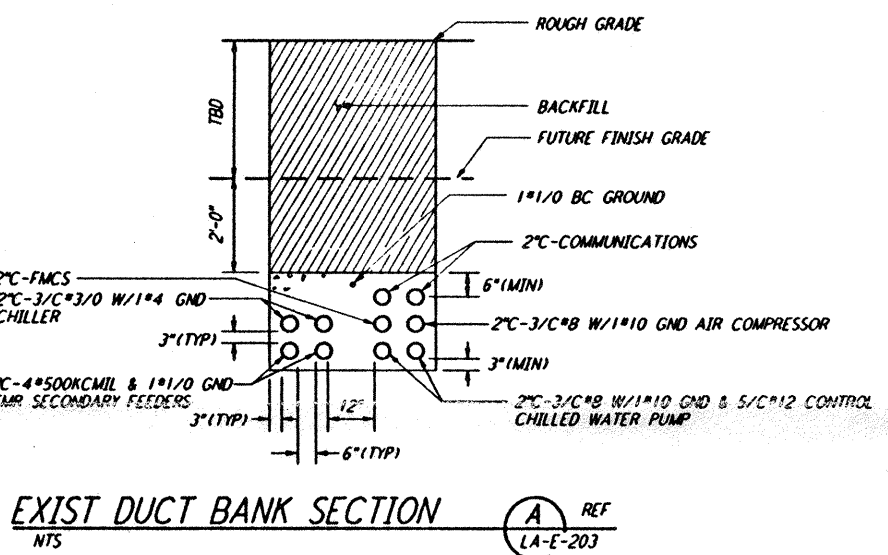
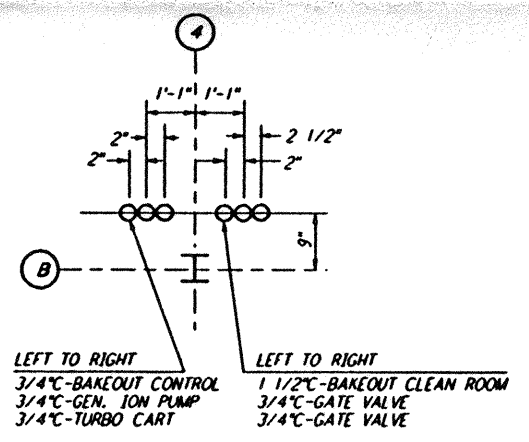
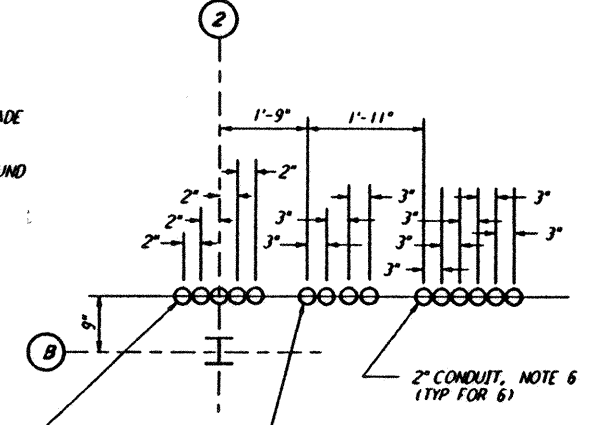
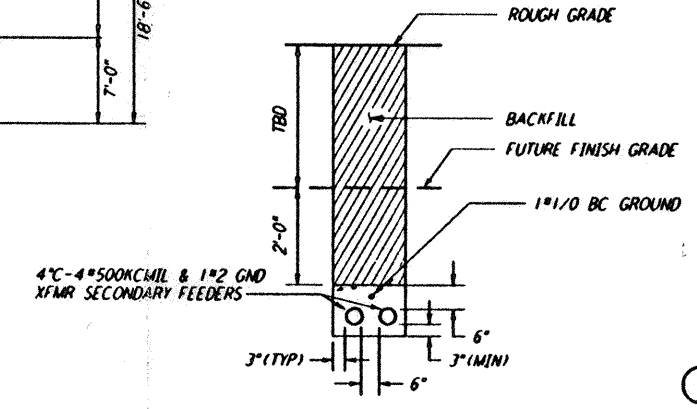
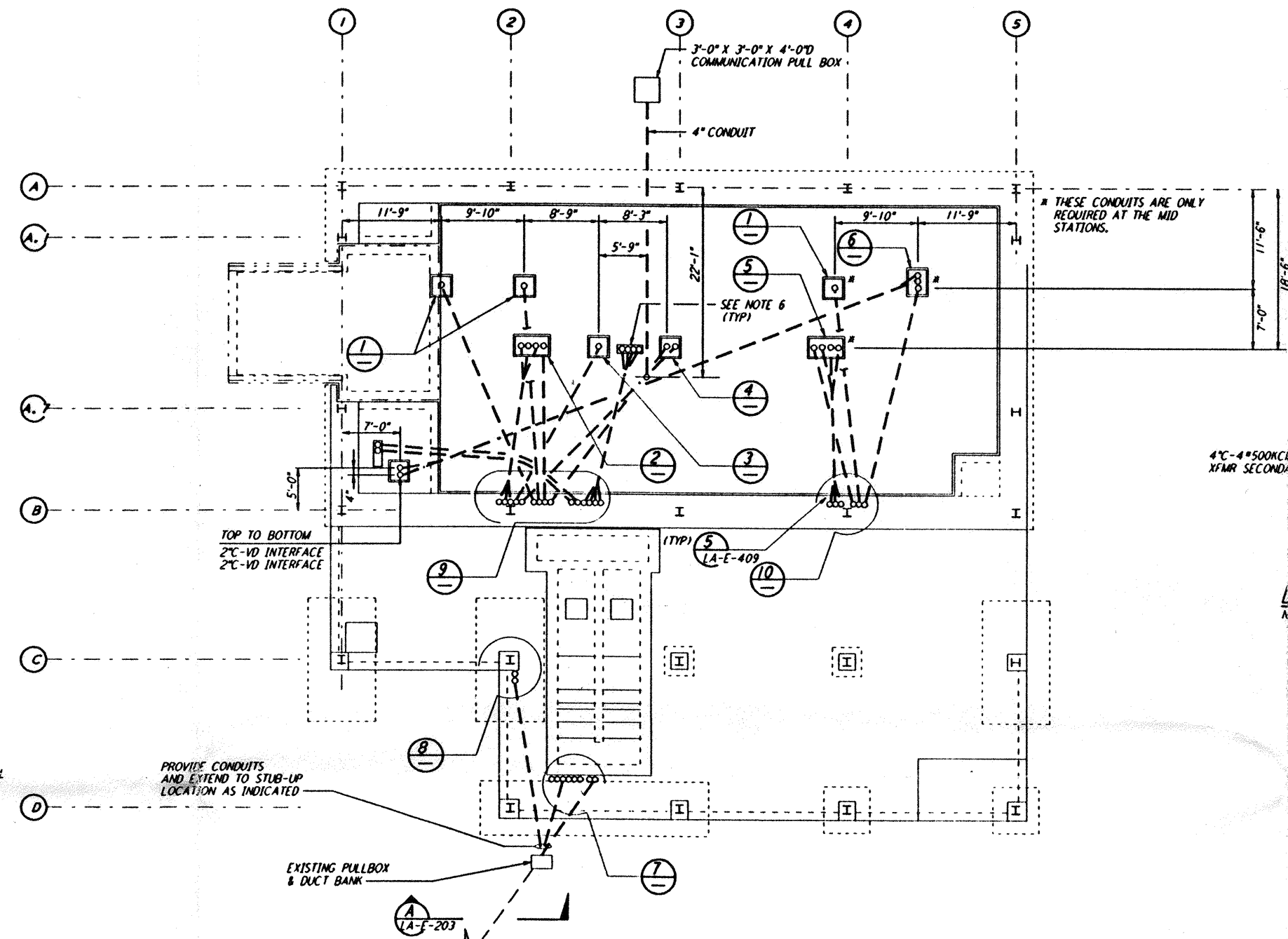
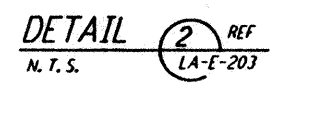
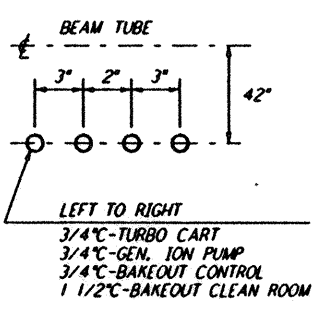
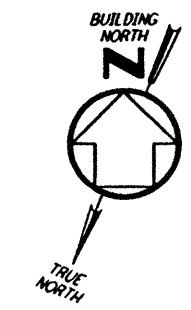


NOTES:

1. FOR STANDARD SYMBOLS, ABBREVIATIONS AND ACRONYMS SEE DWG. LA-E-001.
2. FOR ELECTRICAL SYMBOLS SEE DWG. LA-E-002.
3. FOR STANDARD INSTALLATION DETAILS SEE DWG. LA-E-405 THRU LA-E-407.
4. FOR CABLE TYPE DESCRIPTION SEE DWG. LA-E-007.
5. ALL DUCTBANK RUNS ARE SHOWN DIAGRAMMATICALLY ONLY. CONTRACTOR SHALL COORDINATE INSTALLATION WITH OTHER DISCIPLINES TO USE COMMON TRENCH, BACK FILL ETC.
6. ARRANGEMENT OF CDS POWER CONDUIT STUB-UPS SHALL BE COORDINATED WITH THE VACUUM EQUIPMENT VENDOR.



NO.	DATE	BY	CHKD	ENGR	PROJ	DESCRIPTION
C	7-24-96	MM	JCL	JCL	TDM	ISSUED FOR BID
B	6-14-96	MM	JCL	RR	TDM	FINAL DESIGN REVIEW
A	10-31-95	MM	JCL	RR	TDM	PRELIMINARY DESIGN REVIEW

NO.	DATE	BY	CHKD	ENGR	PROJ	DESCRIPTION
C	7-24-96	MM	JCL	JCL	TDM	ISSUED FOR BID
B	6-14-96	MM	JCL	RR	TDM	FINAL DESIGN REVIEW
A	10-31-95	MM	JCL	RR	TDM	PRELIMINARY DESIGN REVIEW

DRAWN	M. M.
CHECKED	
ENGINEER	
PROJ	

PARSONS
 100 WEST WALNUT STREET
 PASADENA, CALIFORNIA

LIGO
 CALIFORNIA INSTITUTE OF TECHNOLOGY
 MASSACHUSETTS INSTITUTE OF TECHNOLOGY

LASER INTERFEROMETER
 GRAVITATIONAL-WAVE OBSERVATORY
 SITE NO. 2 - LIVINGSTON, LOUISIANA

ELECTRICAL
 END STATION A
 UNDERGROUND
 PLAN

AS NOTED PPI50969 8094
LA-E-203

This document and the design it covers are the property of PARSONS. They are loaned only with the Borrower's expressed written agreement that they will not be reproduced, copied, loaned, exhibited, or used in any other way, except by written consent from PARSONS.

Tue Jul 23 18:46:05 1996 S3-V18B2 J:\PLOTS\QUEUES\18B2\EE203.PRF