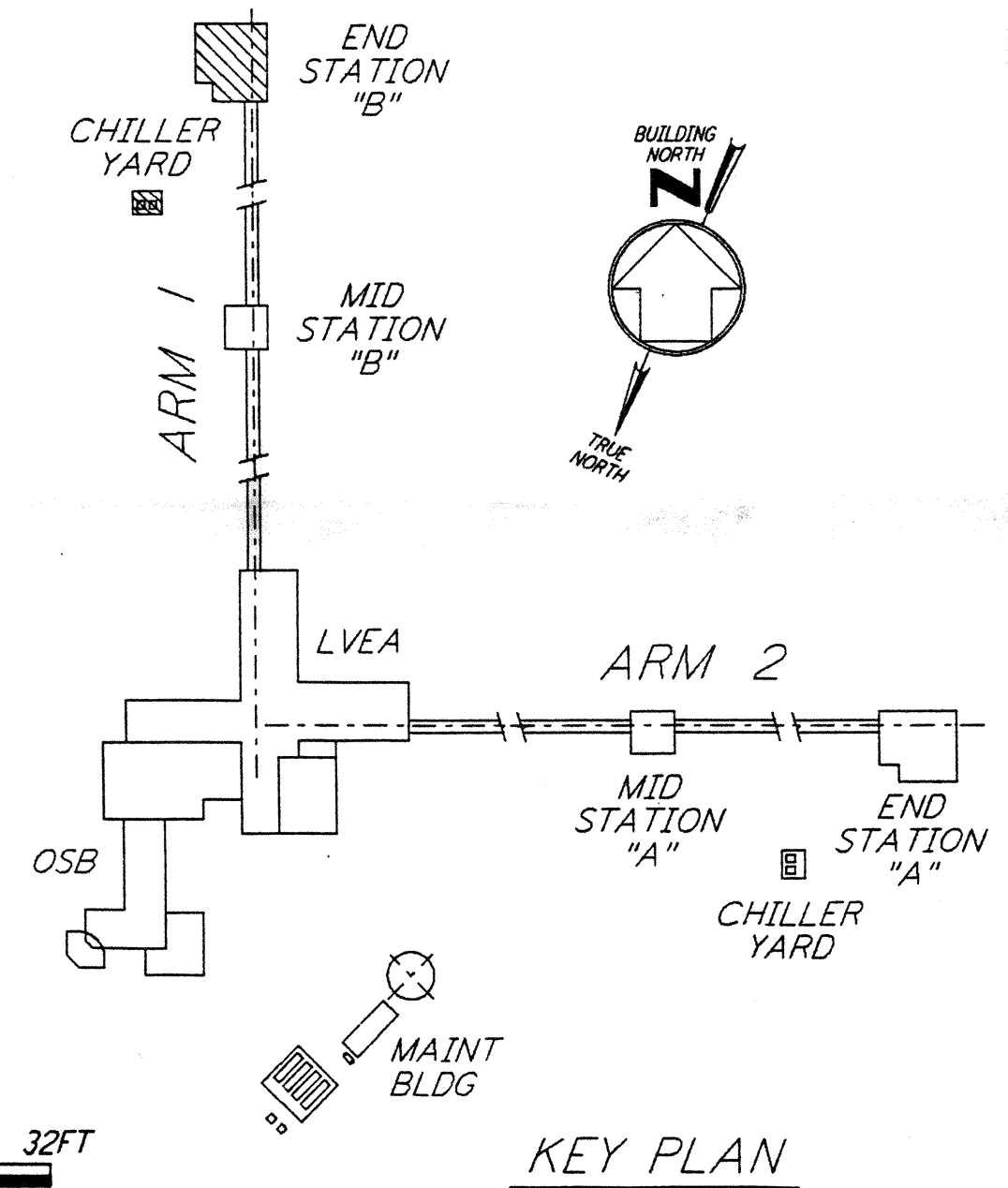
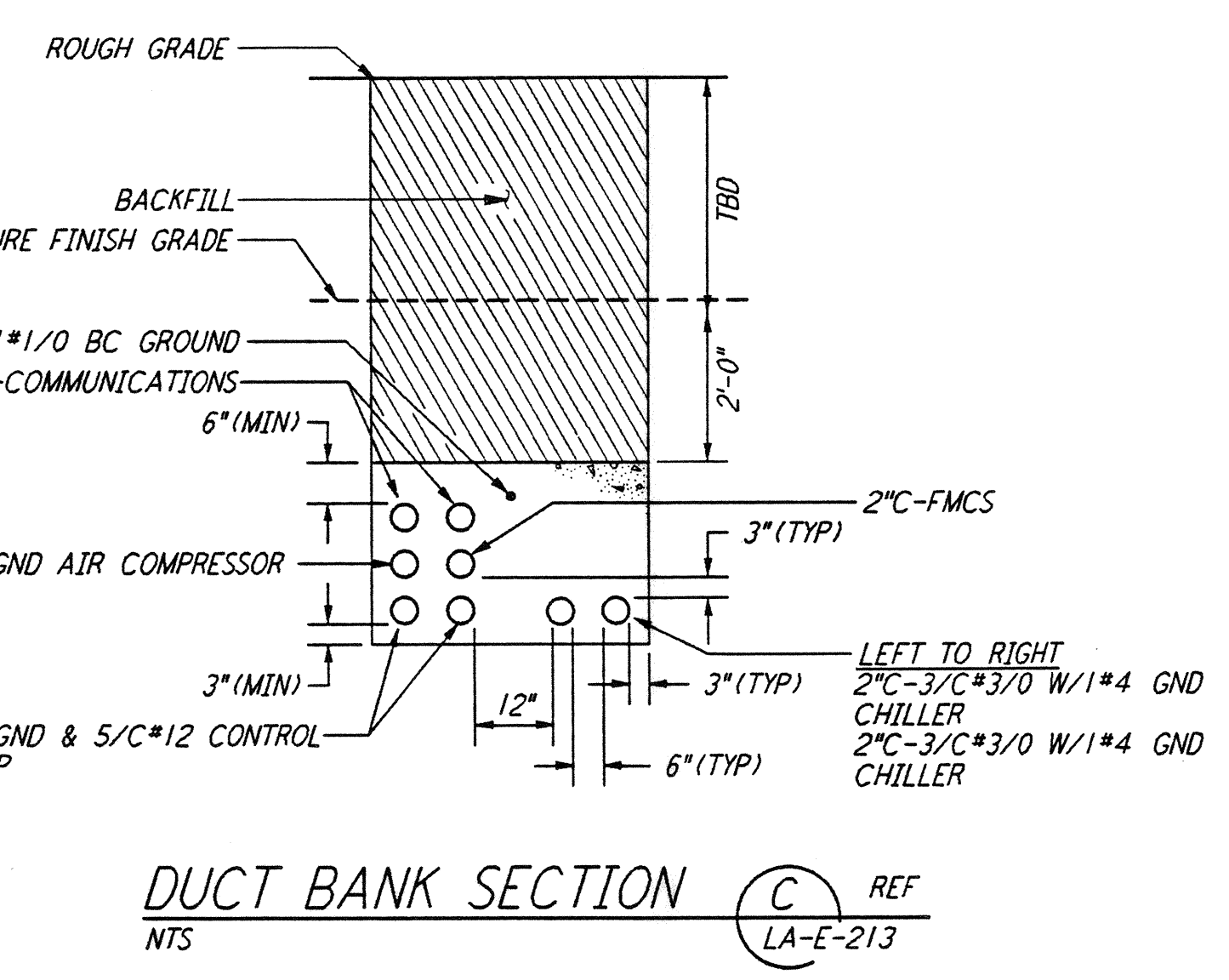
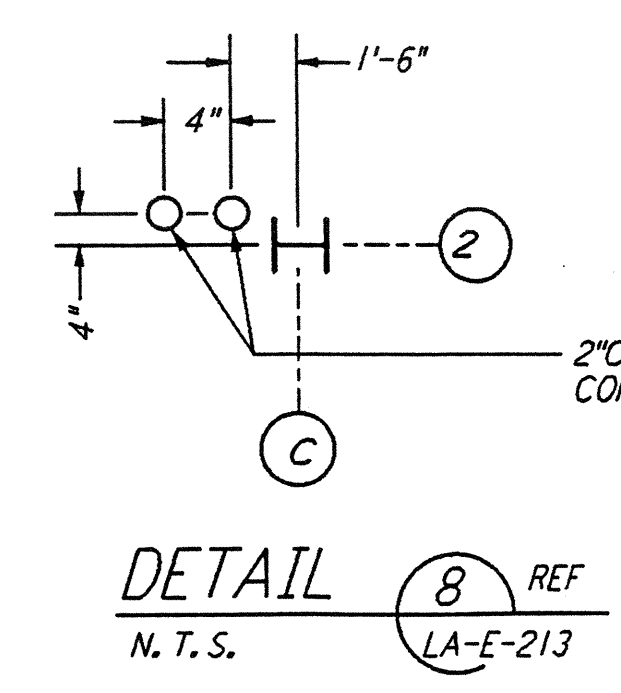
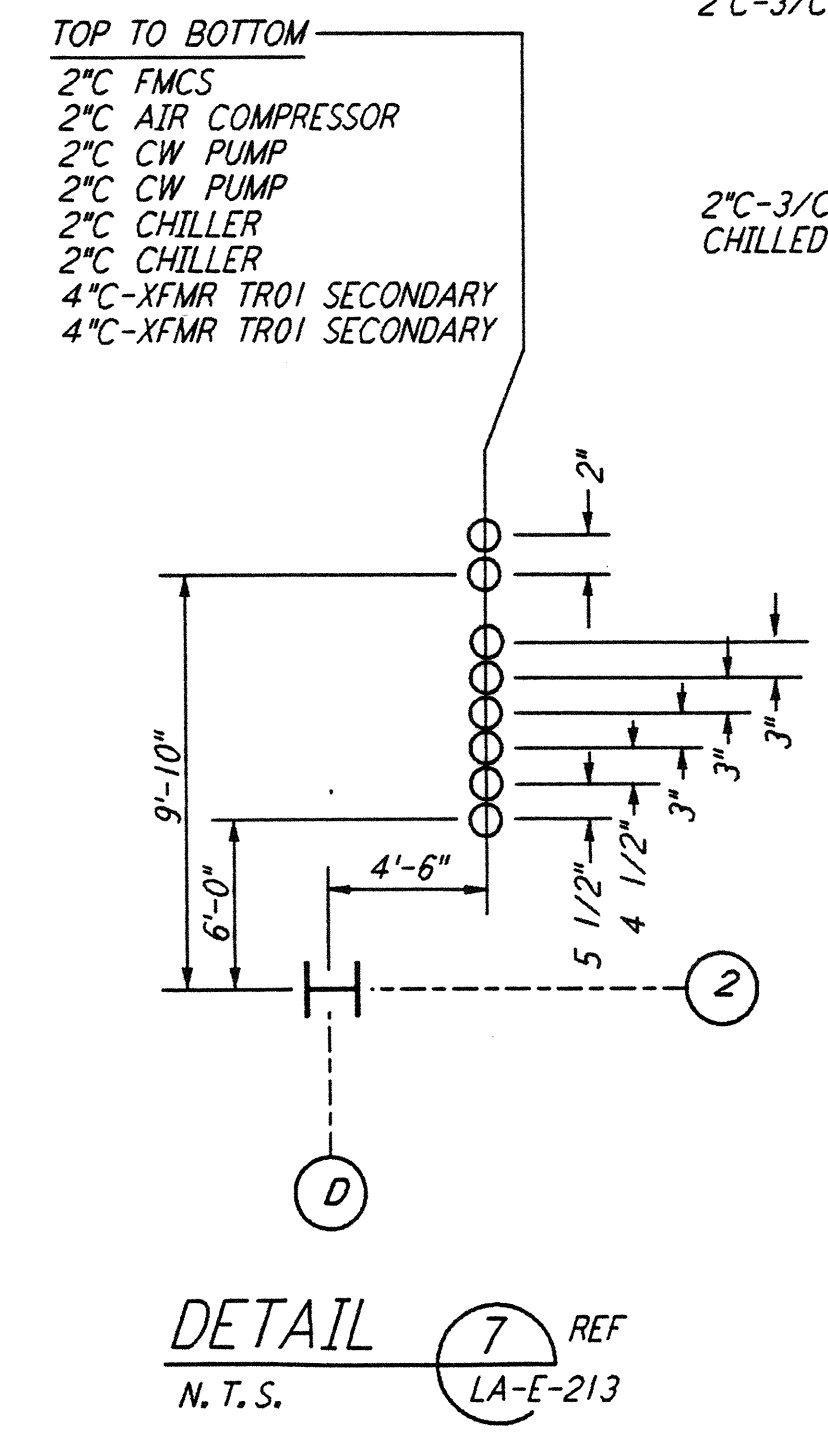
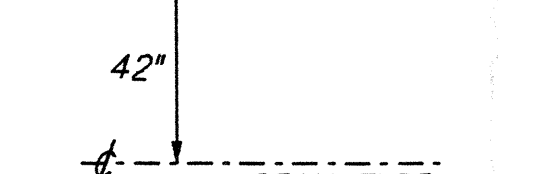
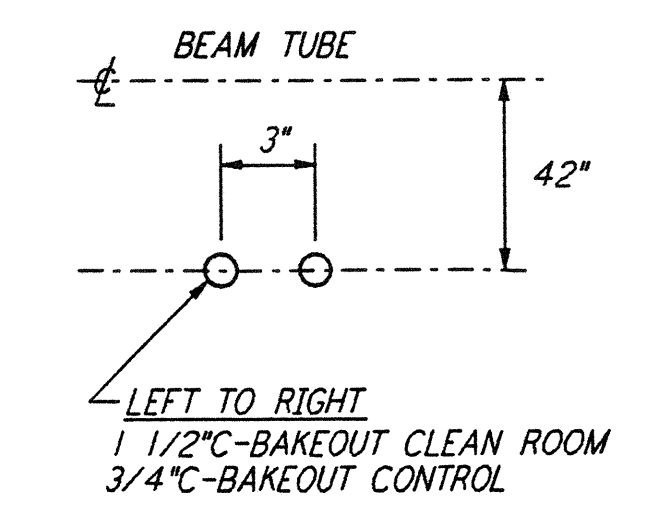
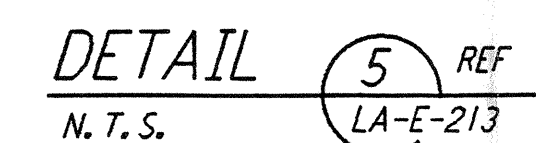
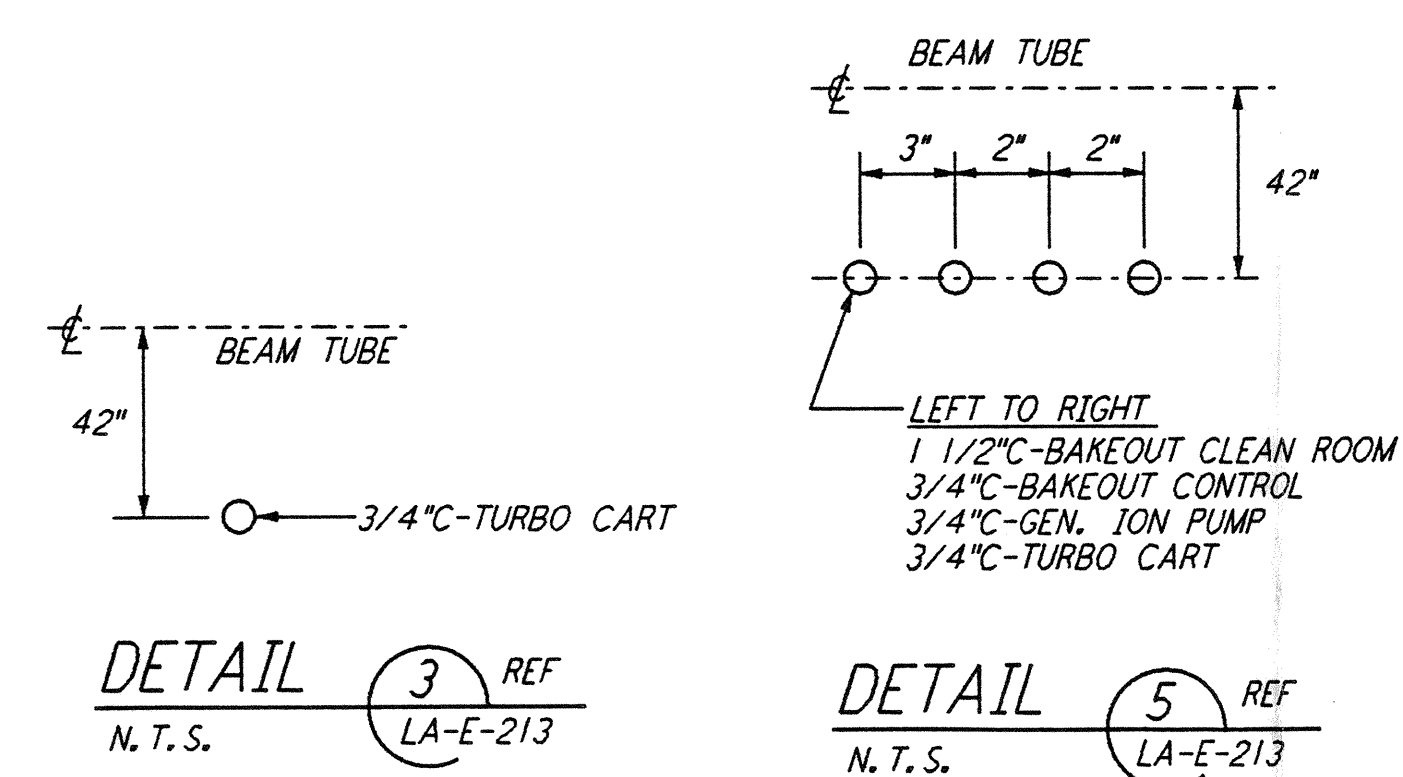
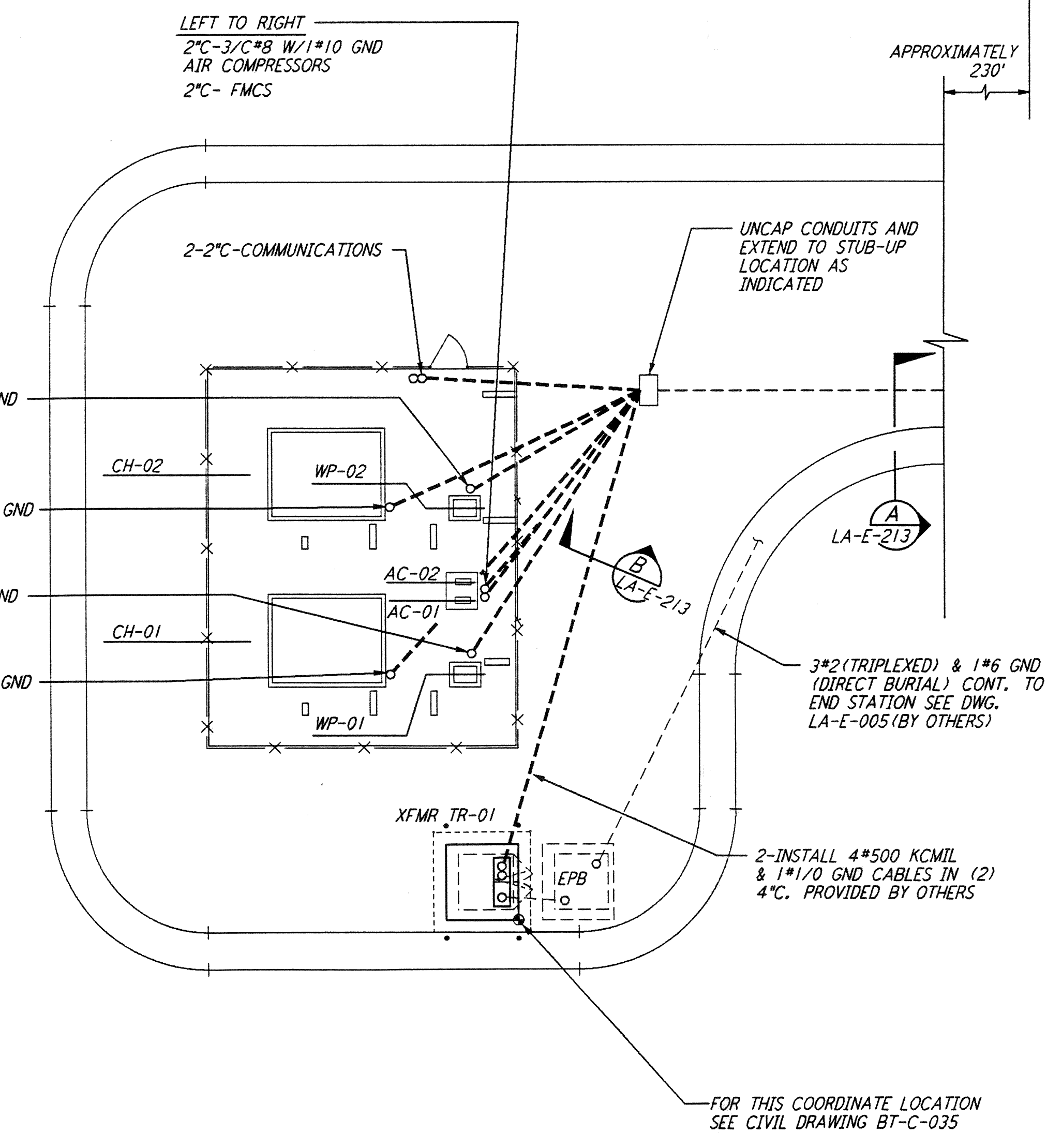
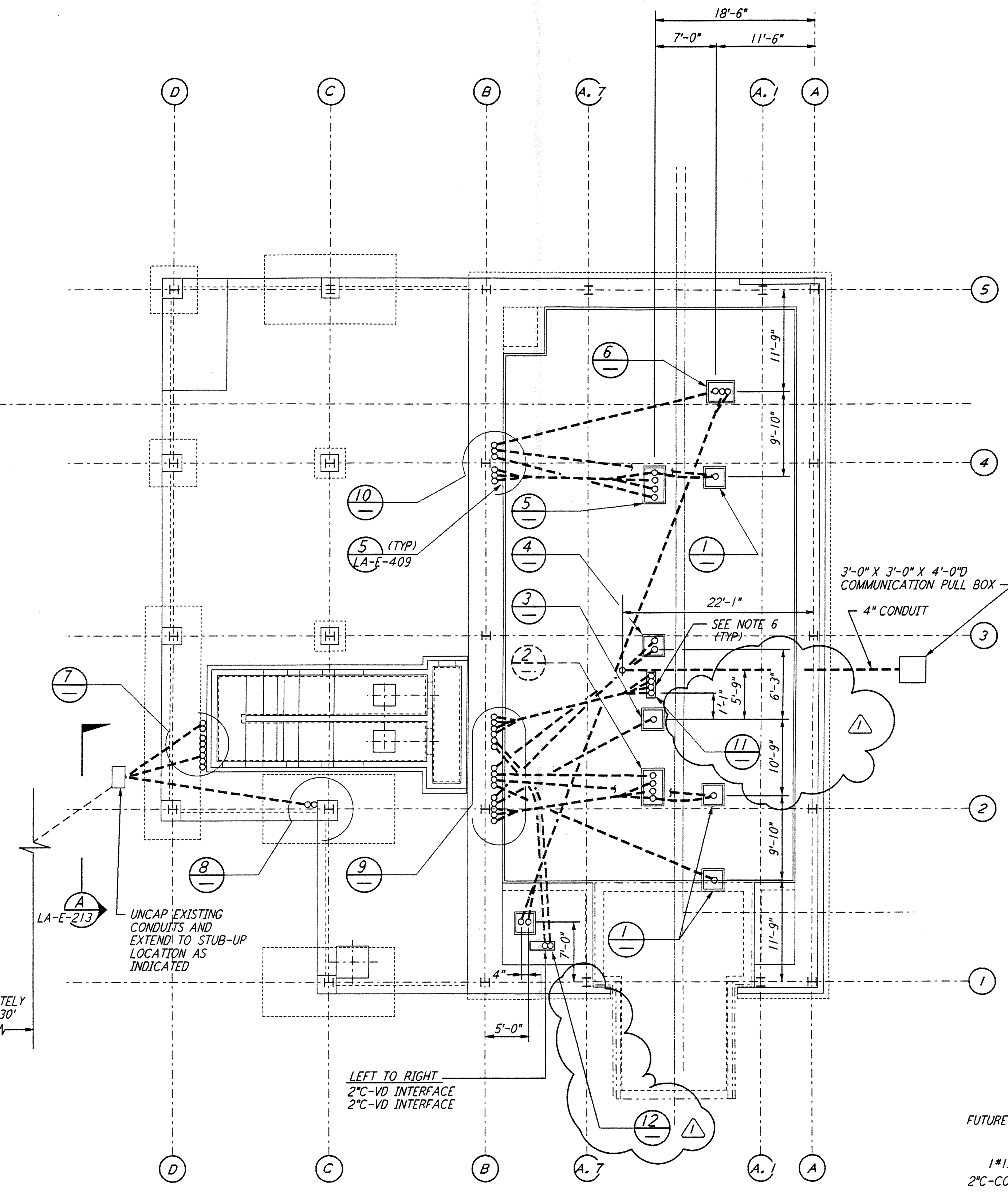
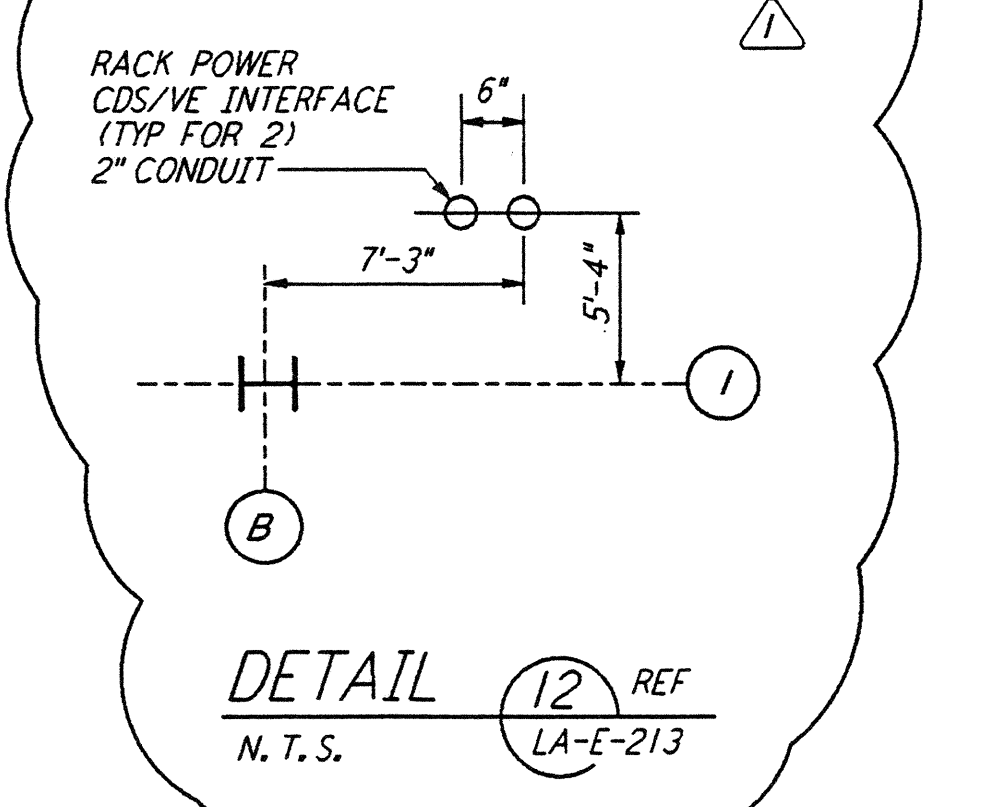
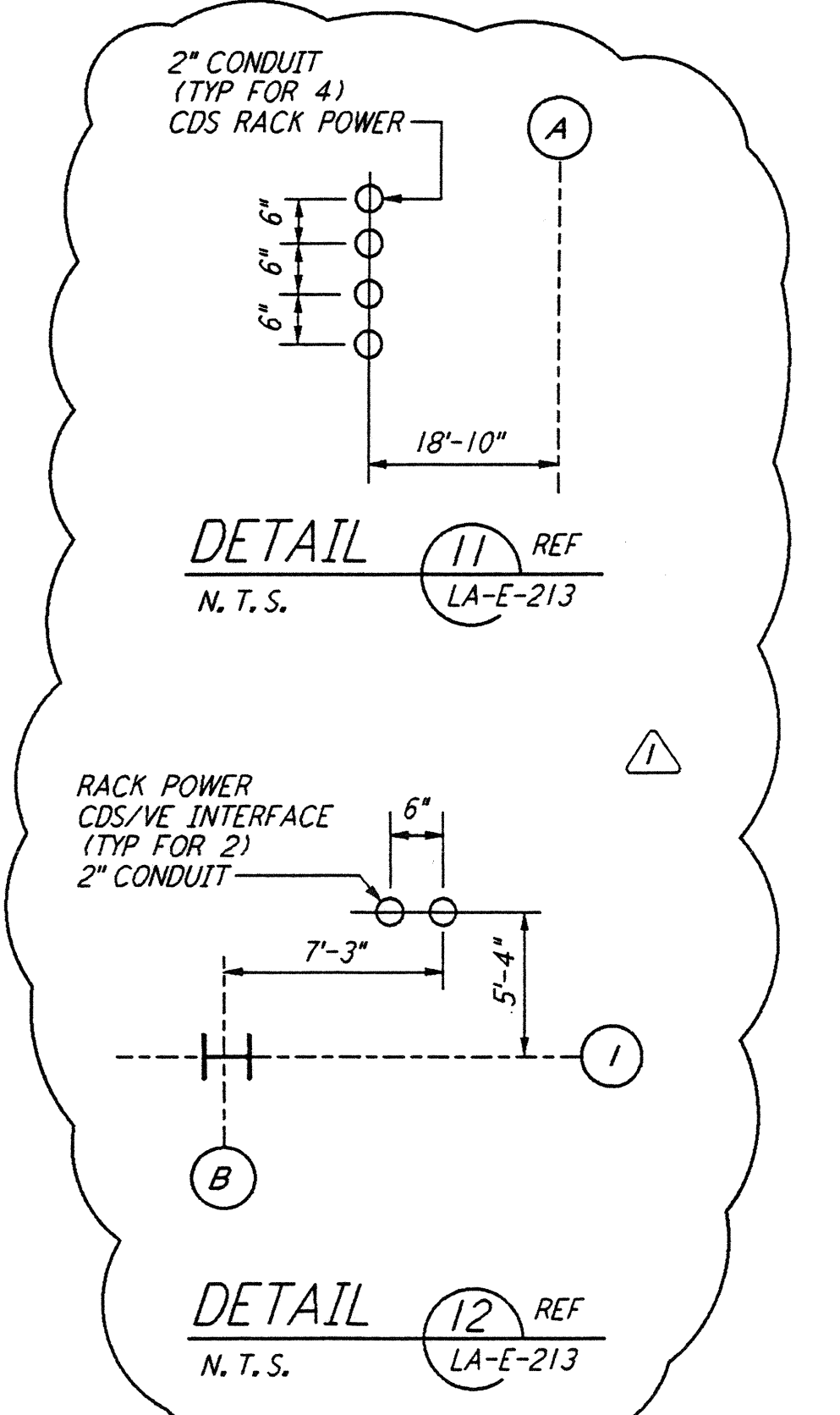
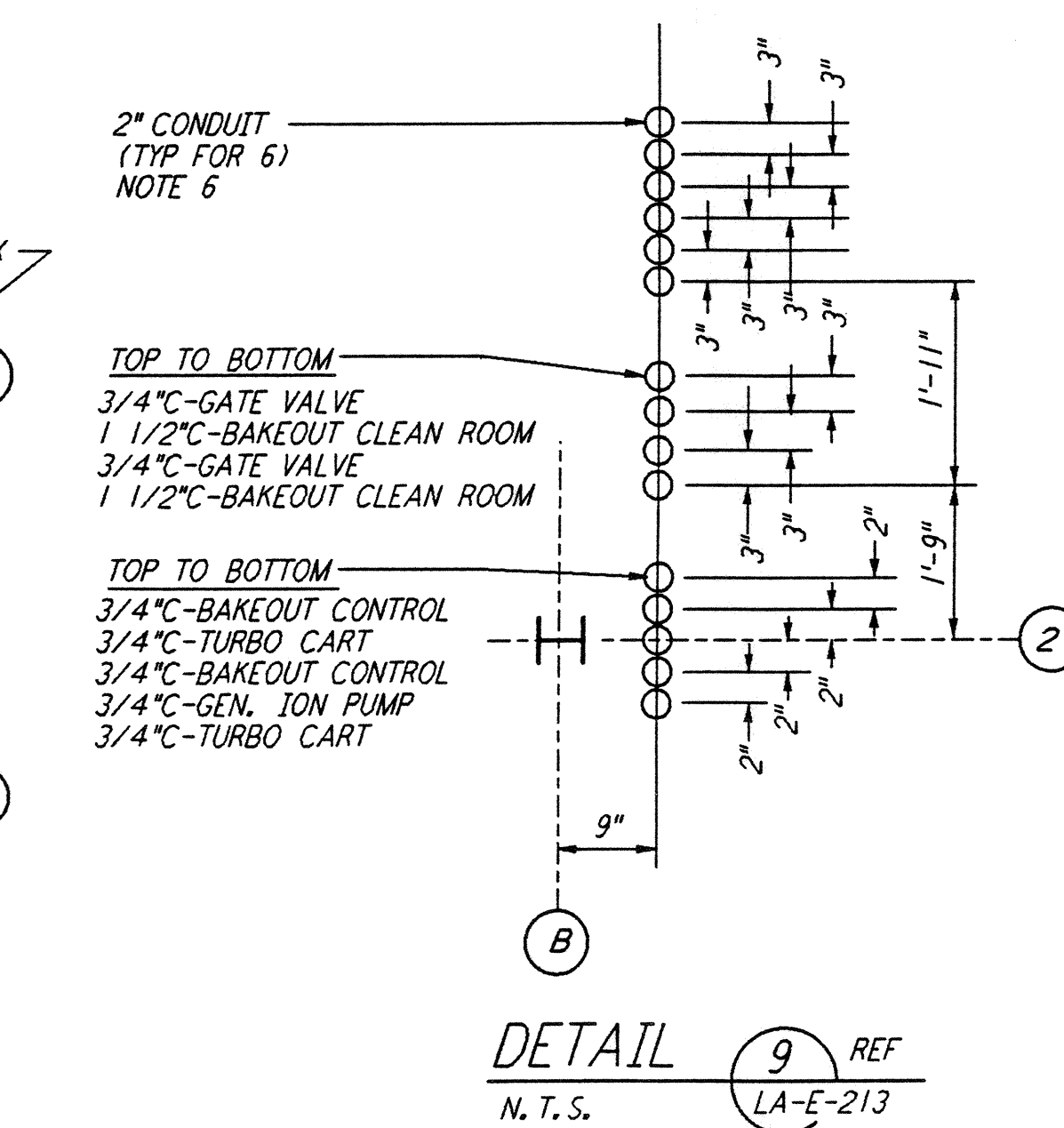
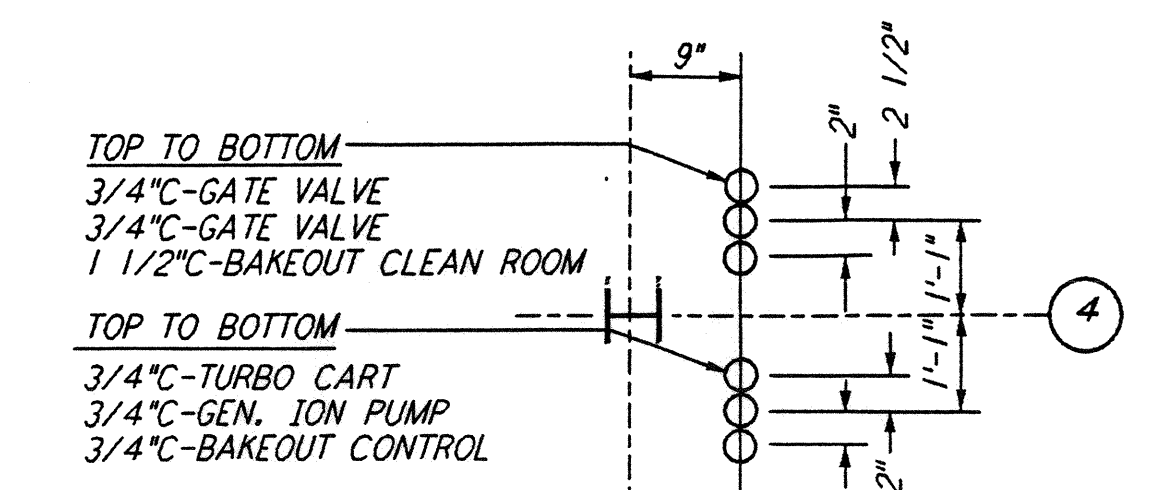
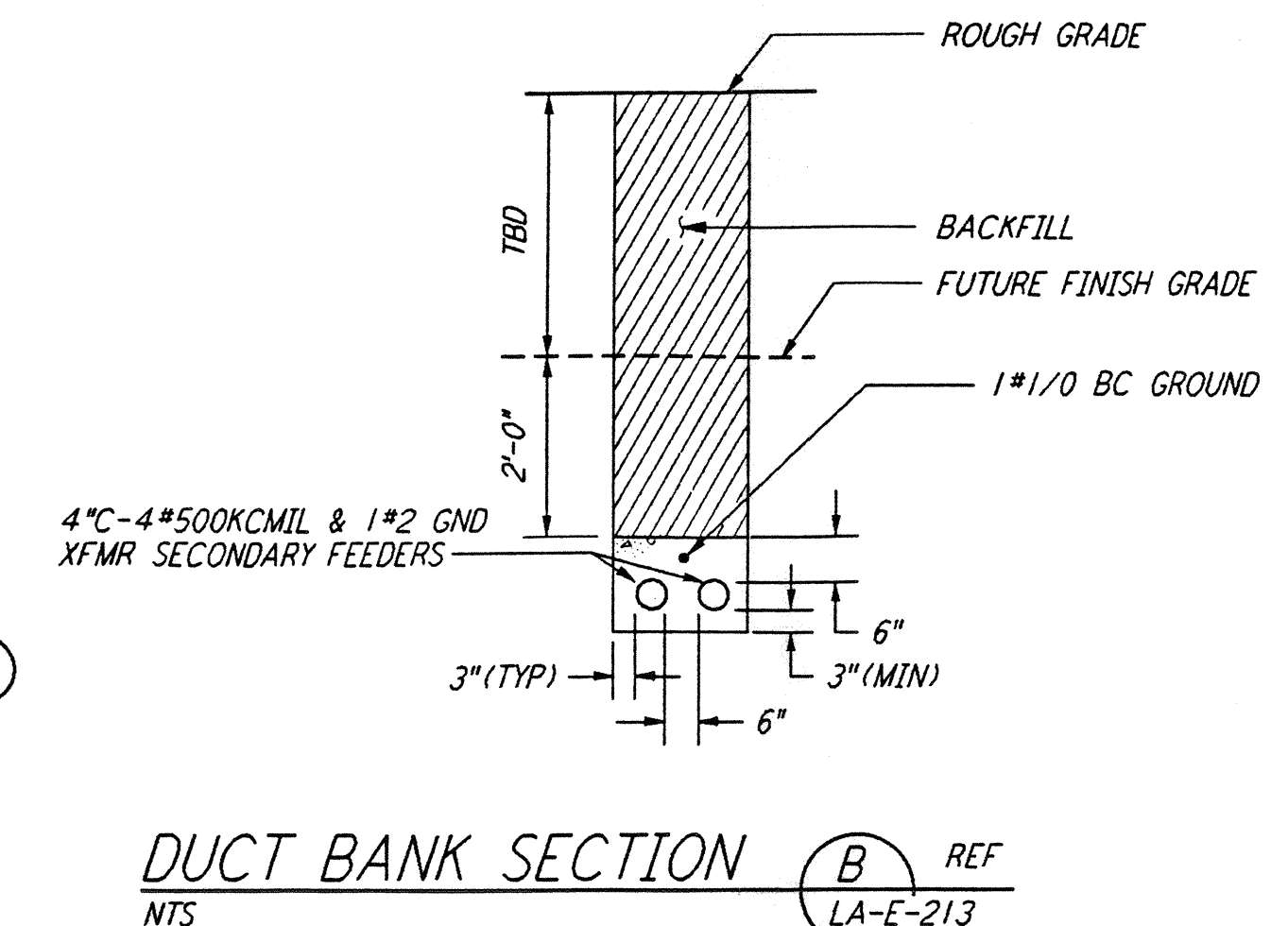
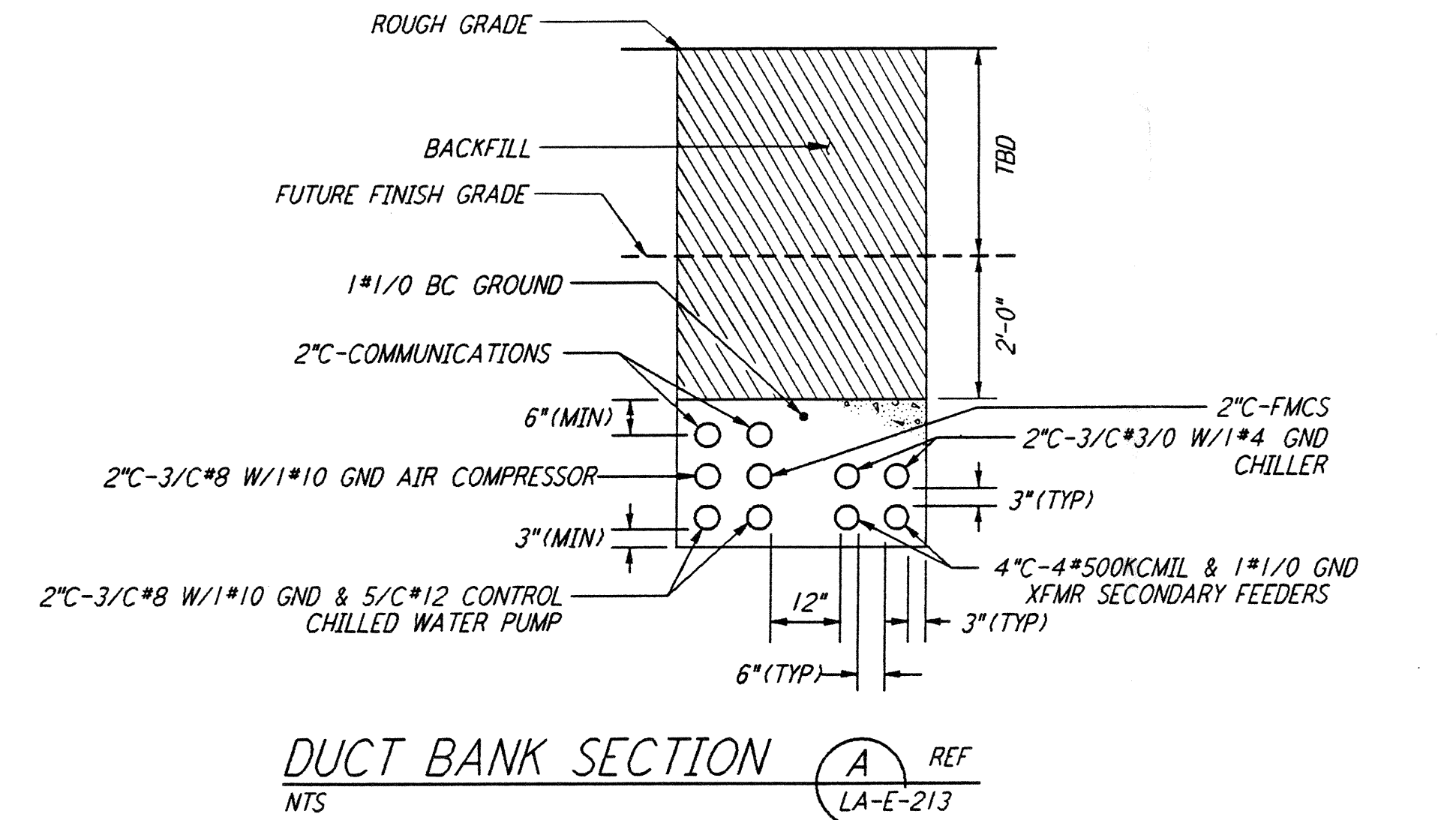
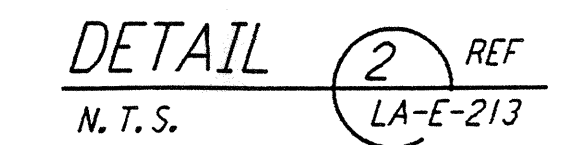
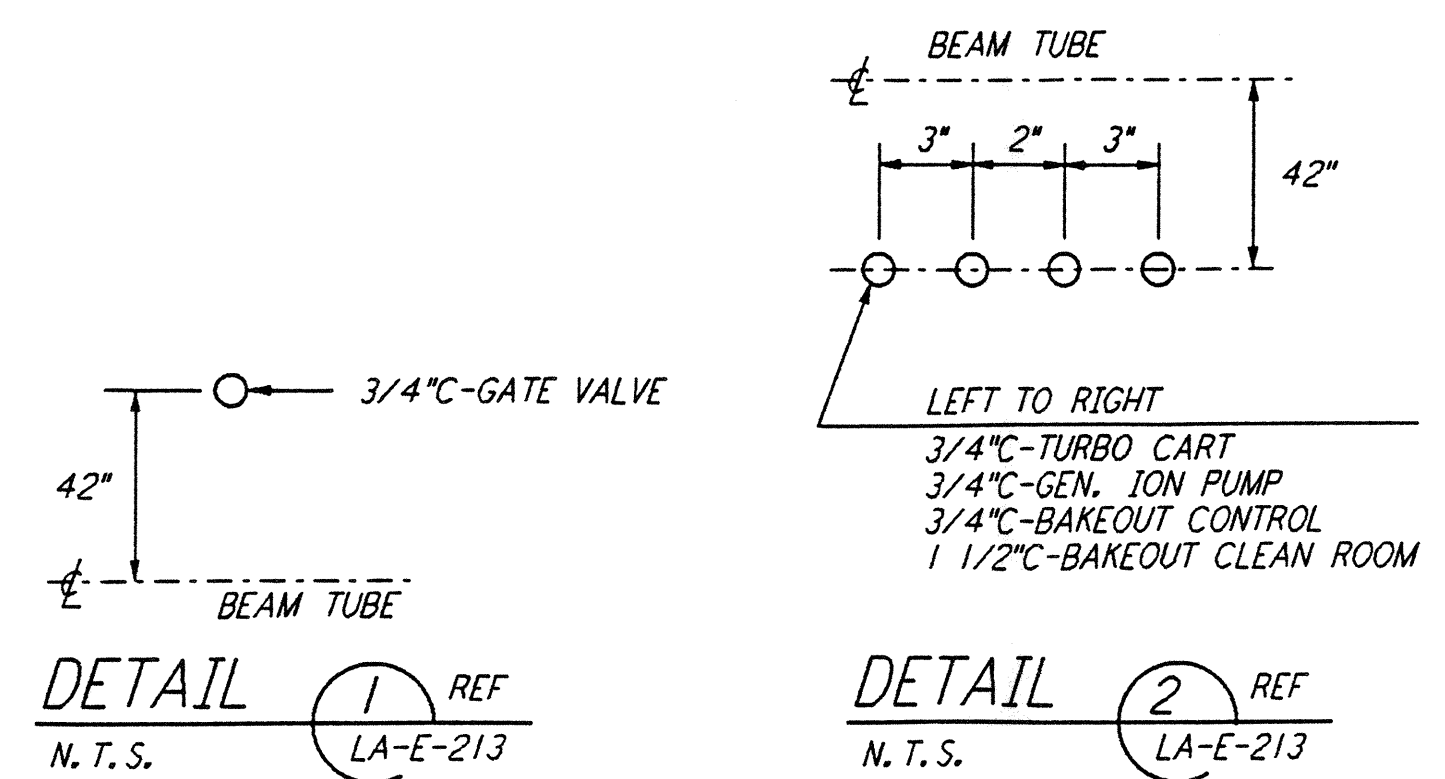
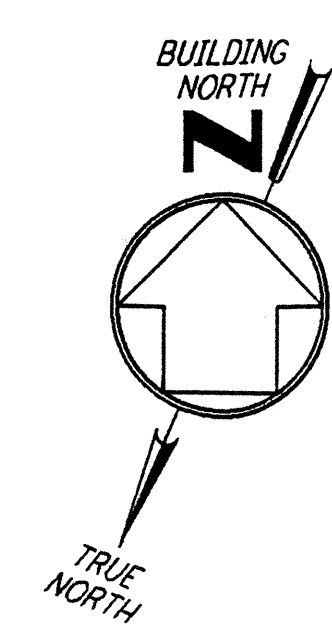


- NOTES:**
- FOR STANDARD SYMBOLS, ABBREVIATIONS AND ACRONYMS SEE DWG. LA-E-001.
 - FOR ELECTRICAL SYMBOLS SEE DWG. LA-E-002.
 - FOR STANDARD INSTALLATION DETAILS SEE DWG. LA-E-405 THRU LA-E-407.
 - FOR CABLE TYPE DESCRIPTION SEE DWG. LA-E-007.
 - ALL DUCTBANK RUNS ARE SHOWN DIAGRAMMATICALLY ONLY. CONTRACTOR SHALL COORDINATE INSTALLATION WITH OTHER DISCIPLINES. TO USE COMMON TRENCH, BACK FILL ETC.
 - ARRANGEMENT OF CDS POWER CONDUIT STUB-UPS SHALL BE COORDINATED WITH THE VACUUM EQUIPMENT VENDOR.



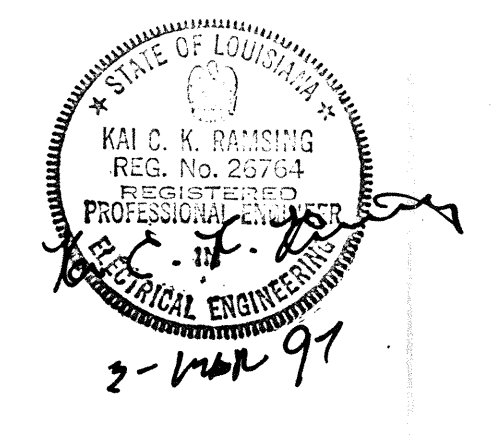
LIGO-D961034-01-0
 0 8 16 24 32 FT
 1/8" = 1'-0"

not be reproduced, copied, loaned, exhibited, or used in any other way, except by written consent from PARSONS to the borrower.

This document and the design it covers are the property of PARSONS. They are loaned only with the borrower's expressed written agreement that they will

NO.	DATE	BY	CHKD	ENGR	PROJ	DESCRIPTION
1	3-17-97	JG	R/P	DD		REVISED VACUUM EQUIP. LOCATIONS

ISSUED FOR CONSTRUCTION		
DRAWN	M. M.	11-15-96
CHECKED	JCL	7-24-96
ENGINEER	KCR	10-25-96
PROJ	TDM	11-5-96



LASER INTERFEROMETER GRAVITATIONAL-WAVE OBSERVATORY SITE NO. 2 - LIVINGSTON, LOUISIANA			
TITLE	SCALE	CONTRACT NUMBER	PROJECT NUMBER
ELECTRICAL END STATION B UNDERGROUND PLAN	AS NOTED	PP150969	8094
SHEET NUMBER		REVISIONS	
LA-E-213			