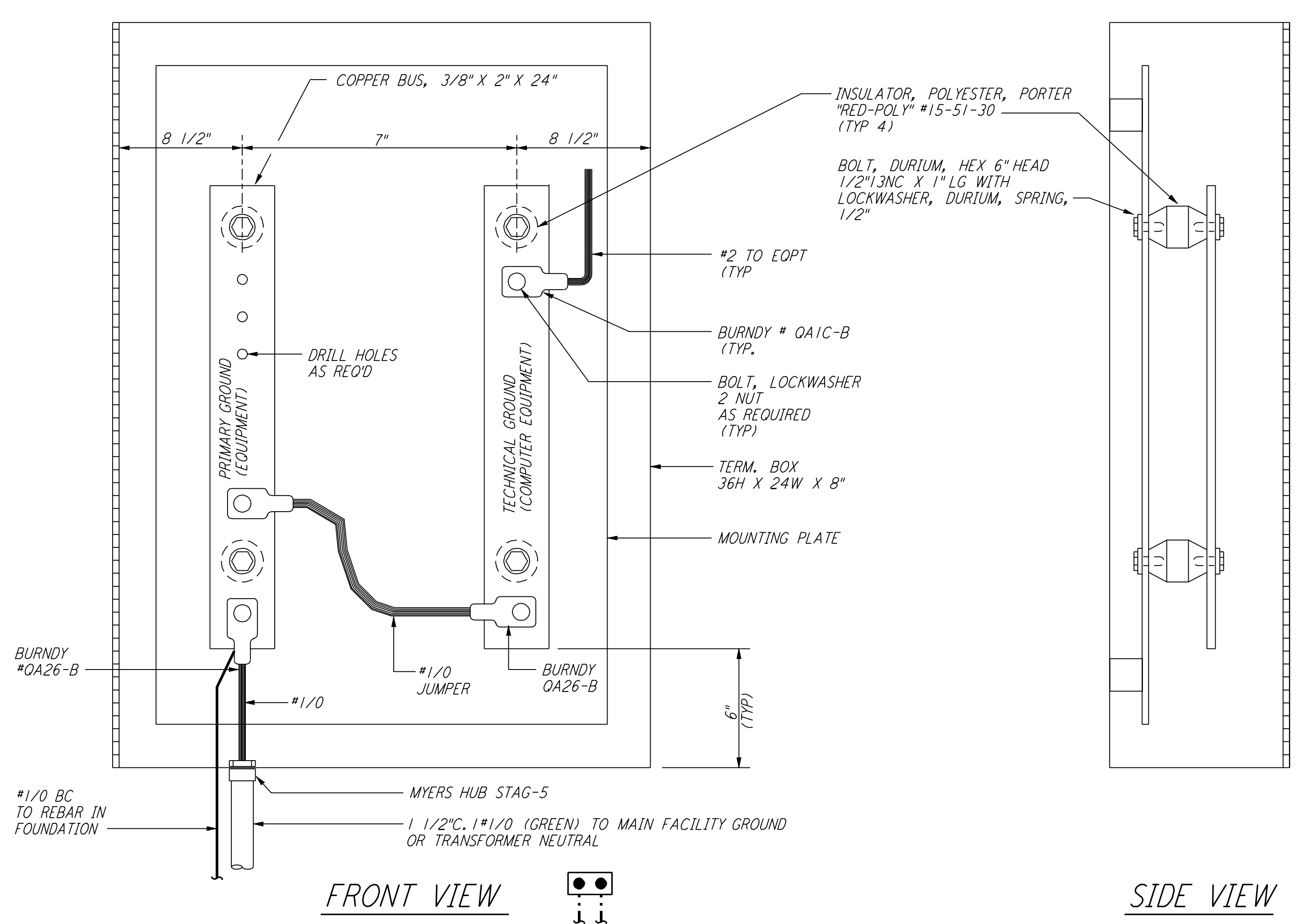
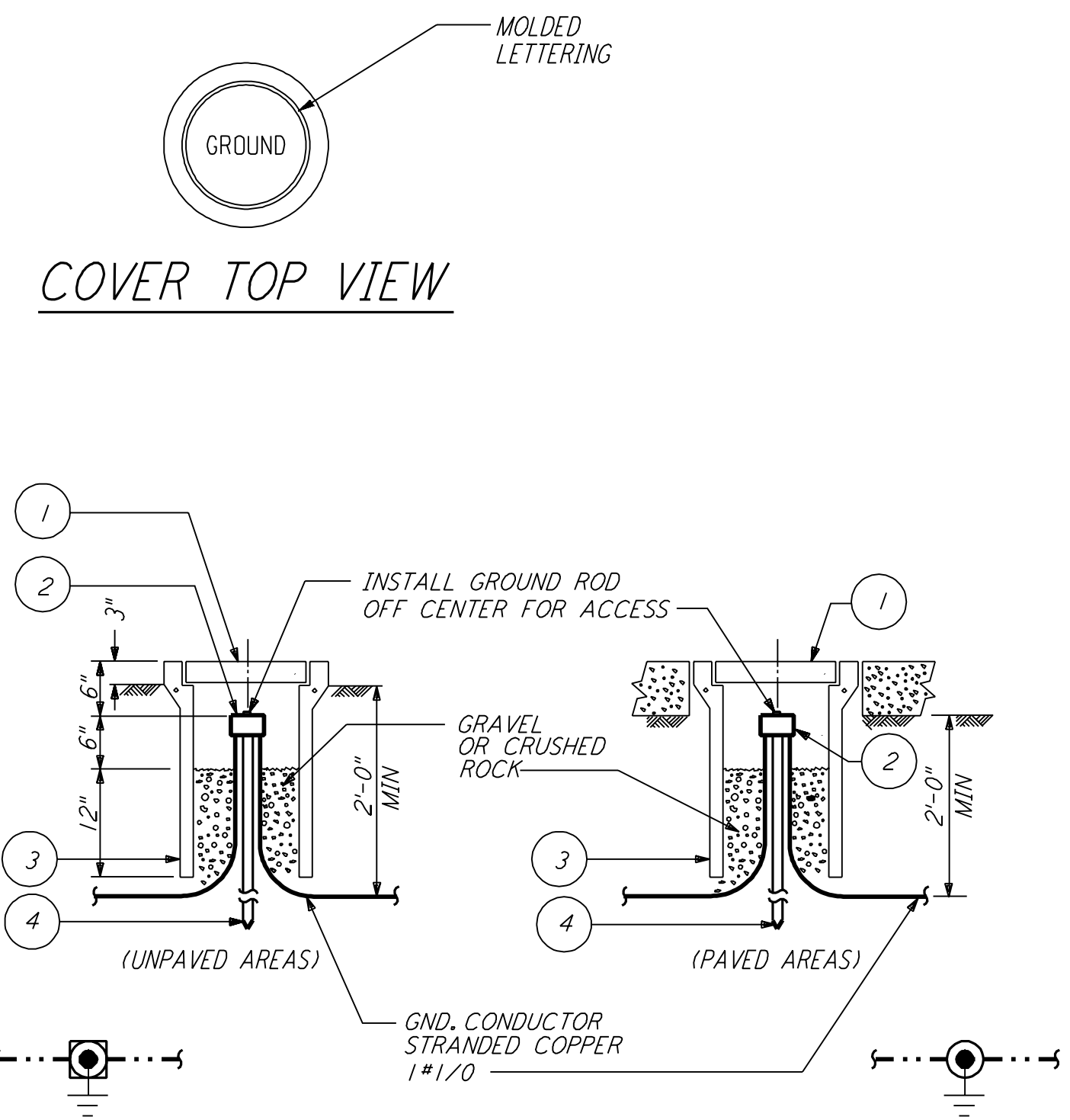


This document and the design it covers are the property of PARSONS. They are loaned only with the borrower's expressed written agreement that they will not be reproduced, copied, loaned, exhibited, or used in any other way, except by written consent from PARSONS to the borrower.

This document and the design it covers are the property of PARSONS. They are loaned only with the borrower's expressed written agreement that they will not be reproduced, copied, loaned, exhibited, or used in any other way, except by written consent from PARSONS to the borrower.



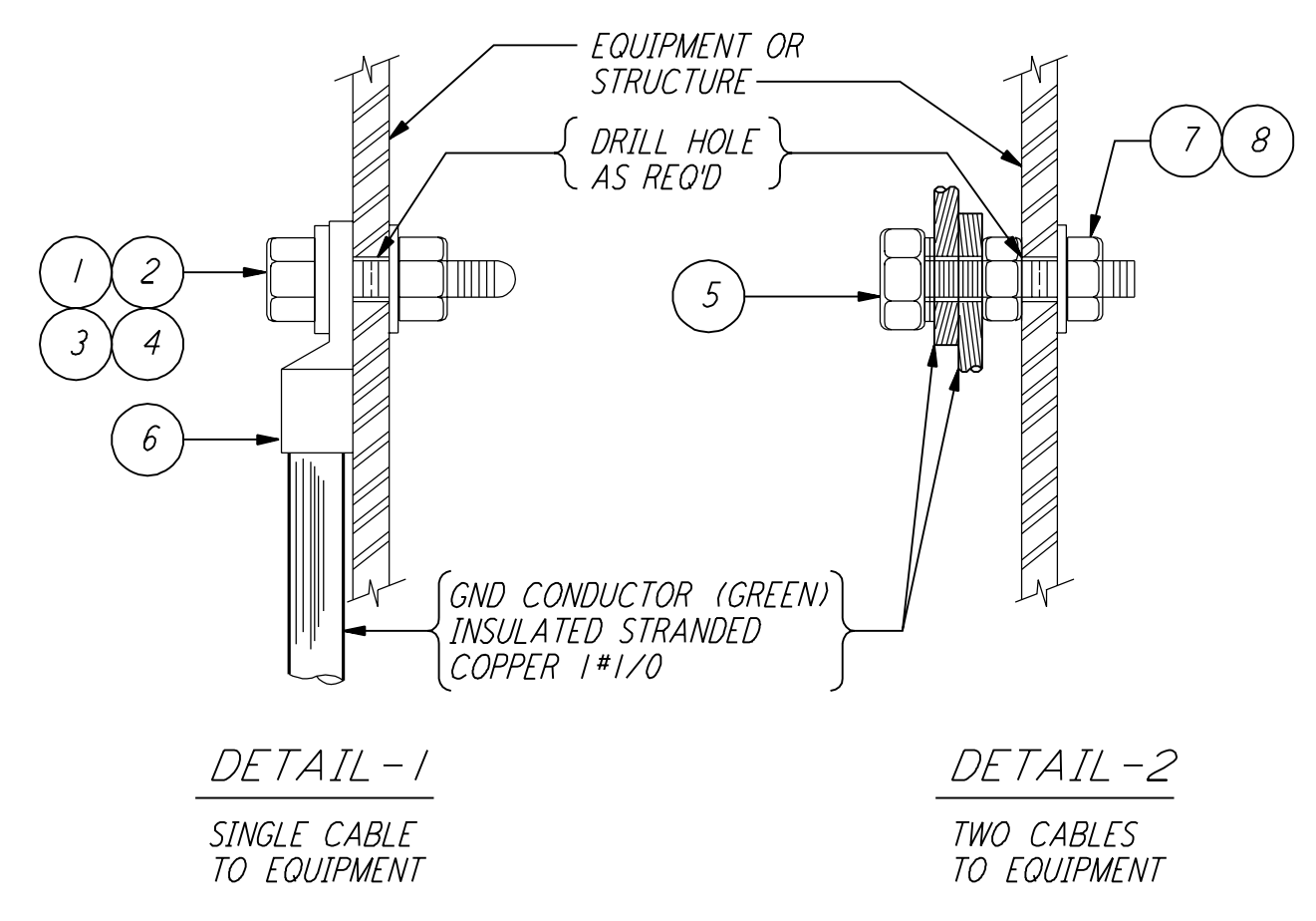
GROUNDING CONNECTION BOX (1) REF
 N.T.S. E-103 E-202 E-208



LIST OF MATERIAL

ITEM NO.	QTY	DESCRIPTION
1	1	BROOKS #9 CONCRETE COVER WT=11 LBS WITH 9 GAGE RE-BAR
2	1	CONNECTOR 3 WIRES X 3/4\"/>

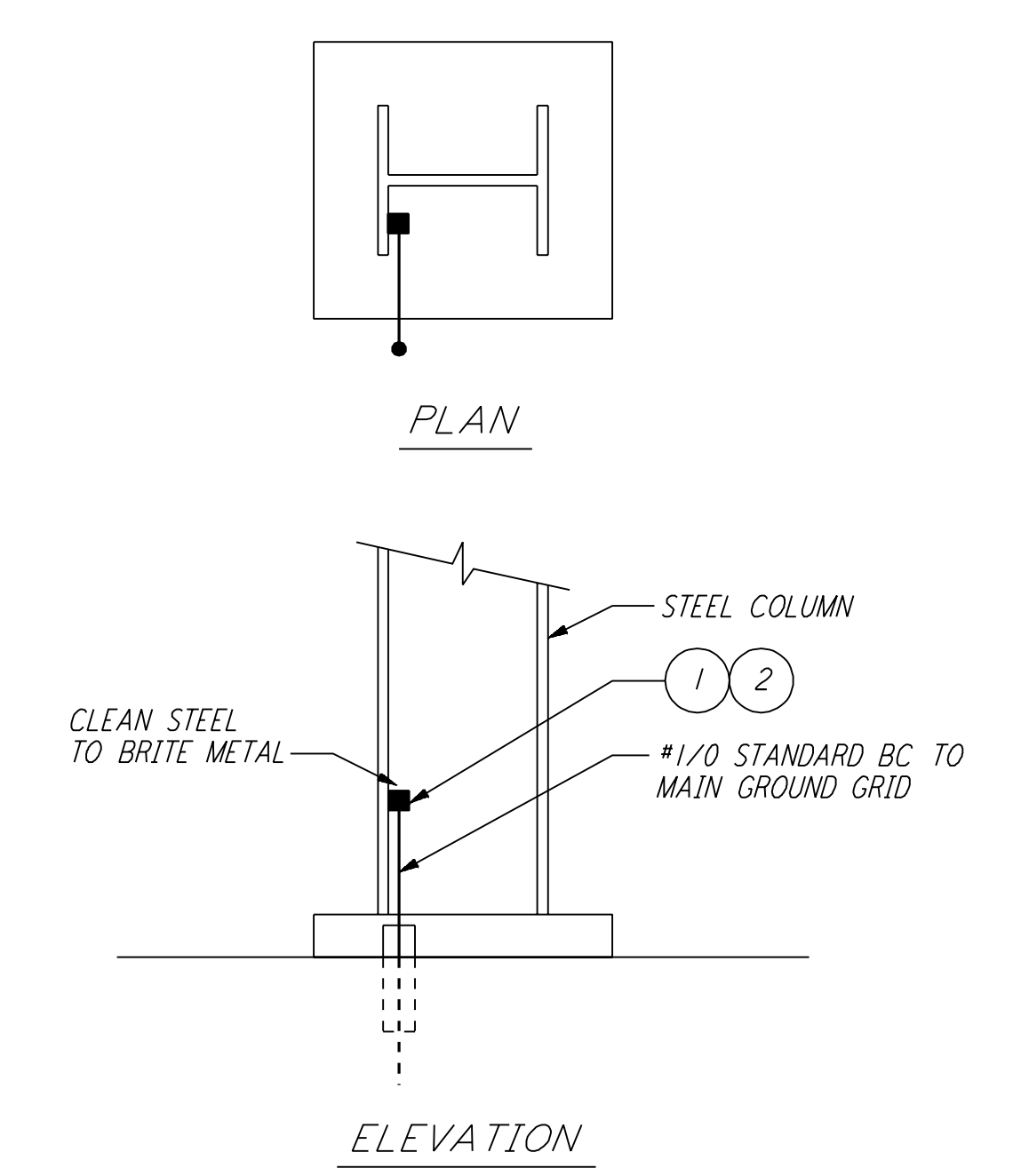
GROUND WELL (2) REF
 N.T.S. E-103 E-112 E-202 E-208



LIST OF MATERIAL

ITEM NO.	QTY	DESCRIPTION
1	1	BOLT, HEX HD SST (SIZE AS REOD)
2	1	NUT, HEX, SST (SIZE AS REOD)
3	1	FLAT WASHER, RD SST (SIZE AS REOD)
4	1	LOCK WASHER, SPRING SST (SIZE AS REOD)
5	1	SERVIT POST, TWO #2-#1/0 WIRES SHORT STUD BURNDY TYPE K2C25
6	1	GND CONNECTOR - STRANDED BURNDY QUICK LUG OA
7	1	NUT, 1/2\"/>

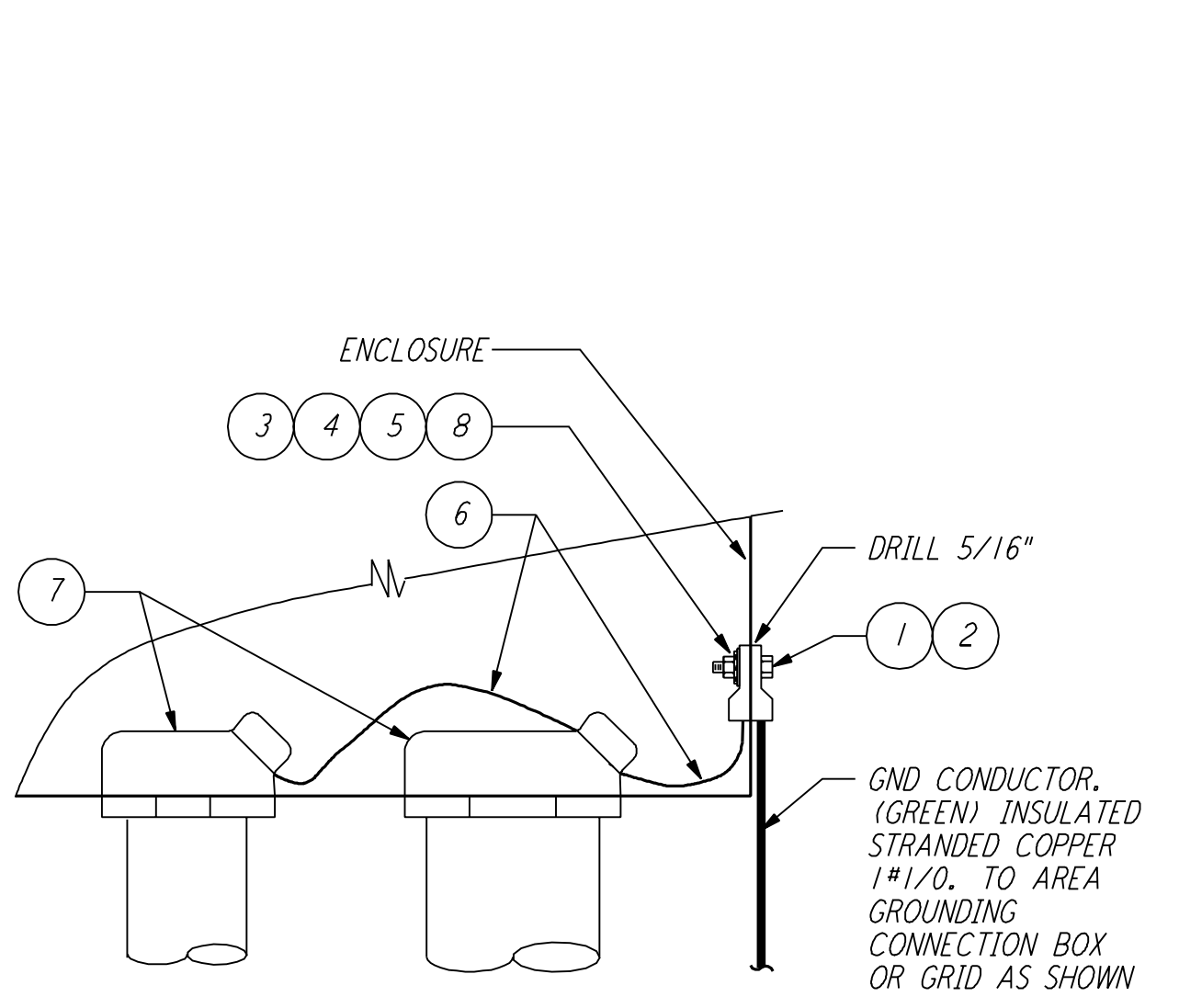
EQUIPMENT GROUNDING (3) REF
 N.T.S. E-202



LIST OF MATERIAL

ITEM NO.	QTY	DESCRIPTION
1	1	CADWELD MOLD #40VBC-2C
2	1	CARTRIDGE STANDARD POWDER 200 GRAMS

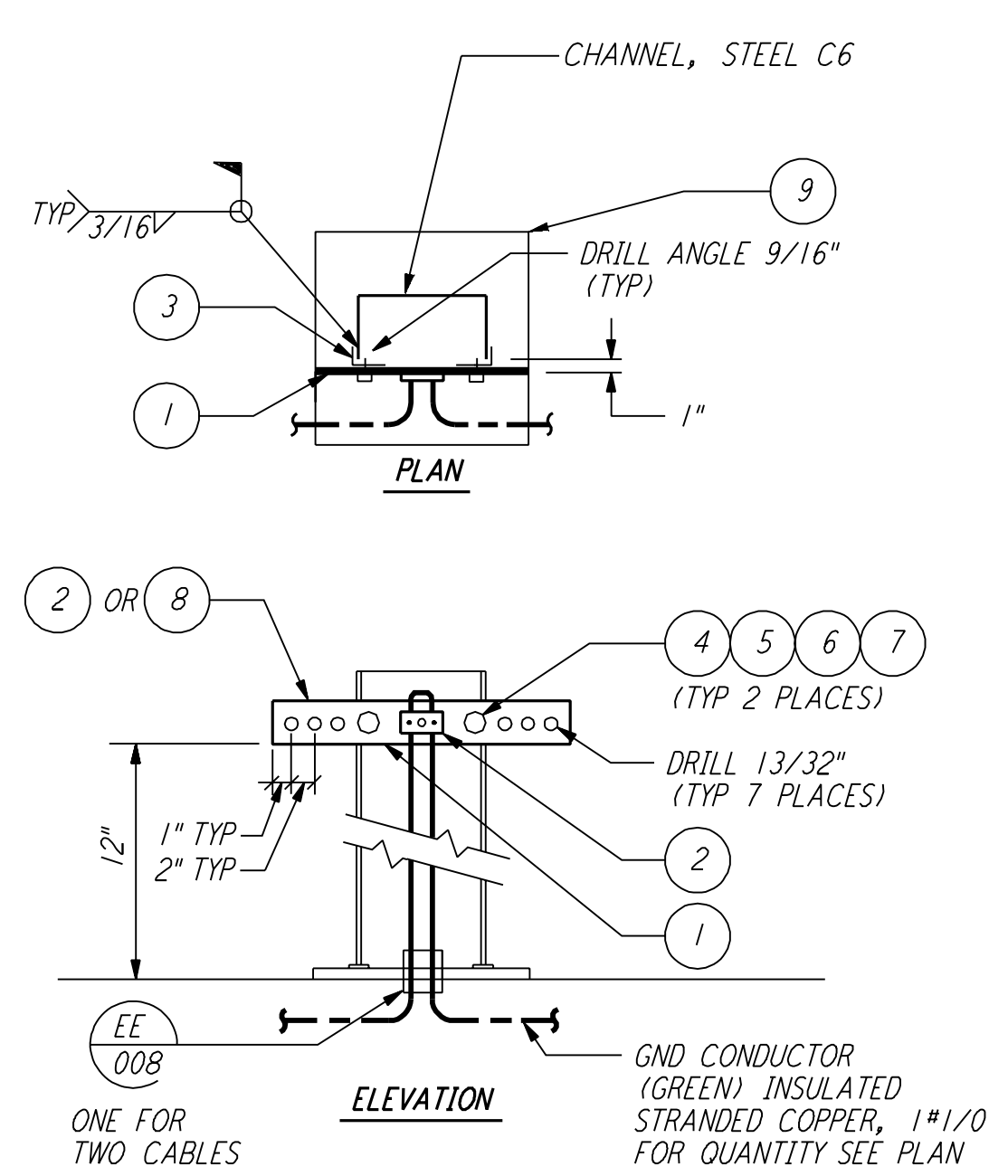
EXOTHERMIC WELD TO STRUCTURE (4) REF
 N.T.S. E-103 E-202 E-208



LIST OF MATERIAL

ITEM NO.	QTY	DESCRIPTION
1	1	LUG, #1/0-#2/0 WIRE X 1/4\"/>

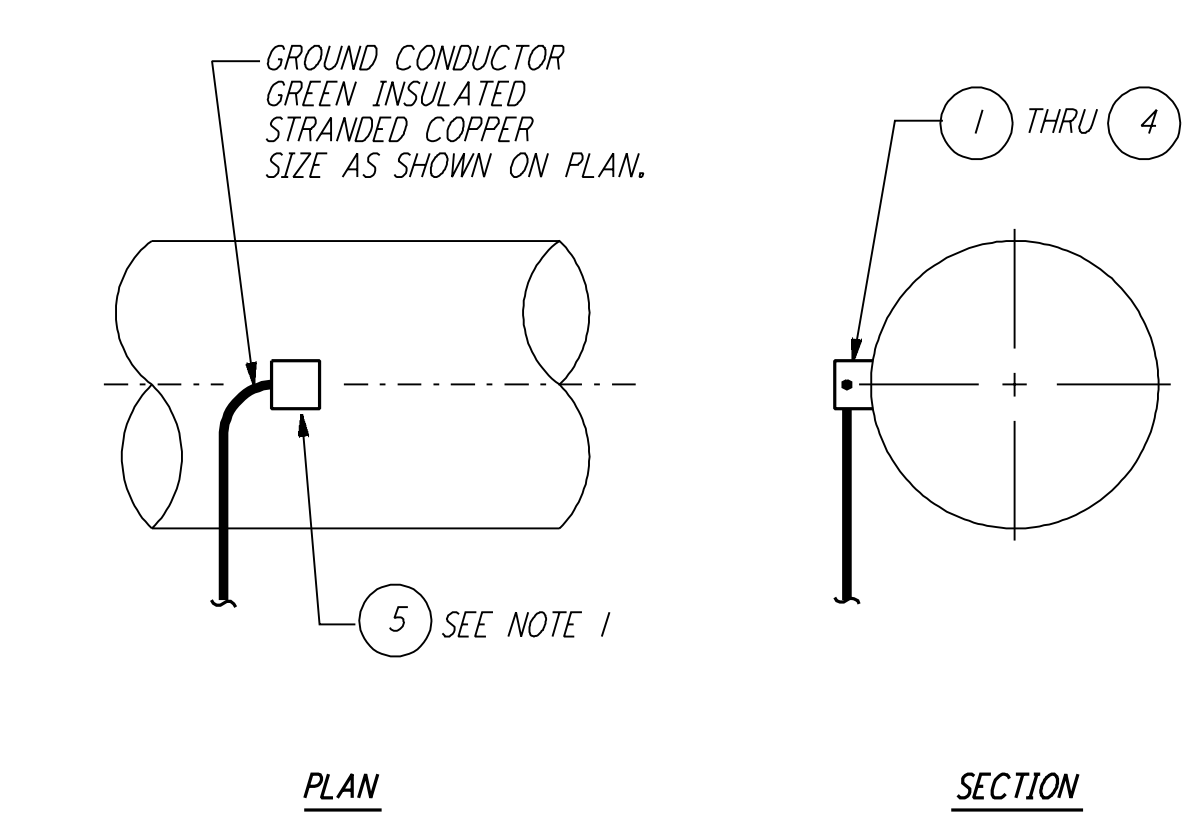
CABINET OR BOX GROUNDING (5) REF
 N.T.S. E-202 E-409



LIST OF MATERIAL

ITEM NO.	QTY	DESCRIPTION
1	1	COPPER BUS, 1/4\"/>

GROUNDING CONNECTION PLATE (6) REF
 N.T.S. E-103 E-112

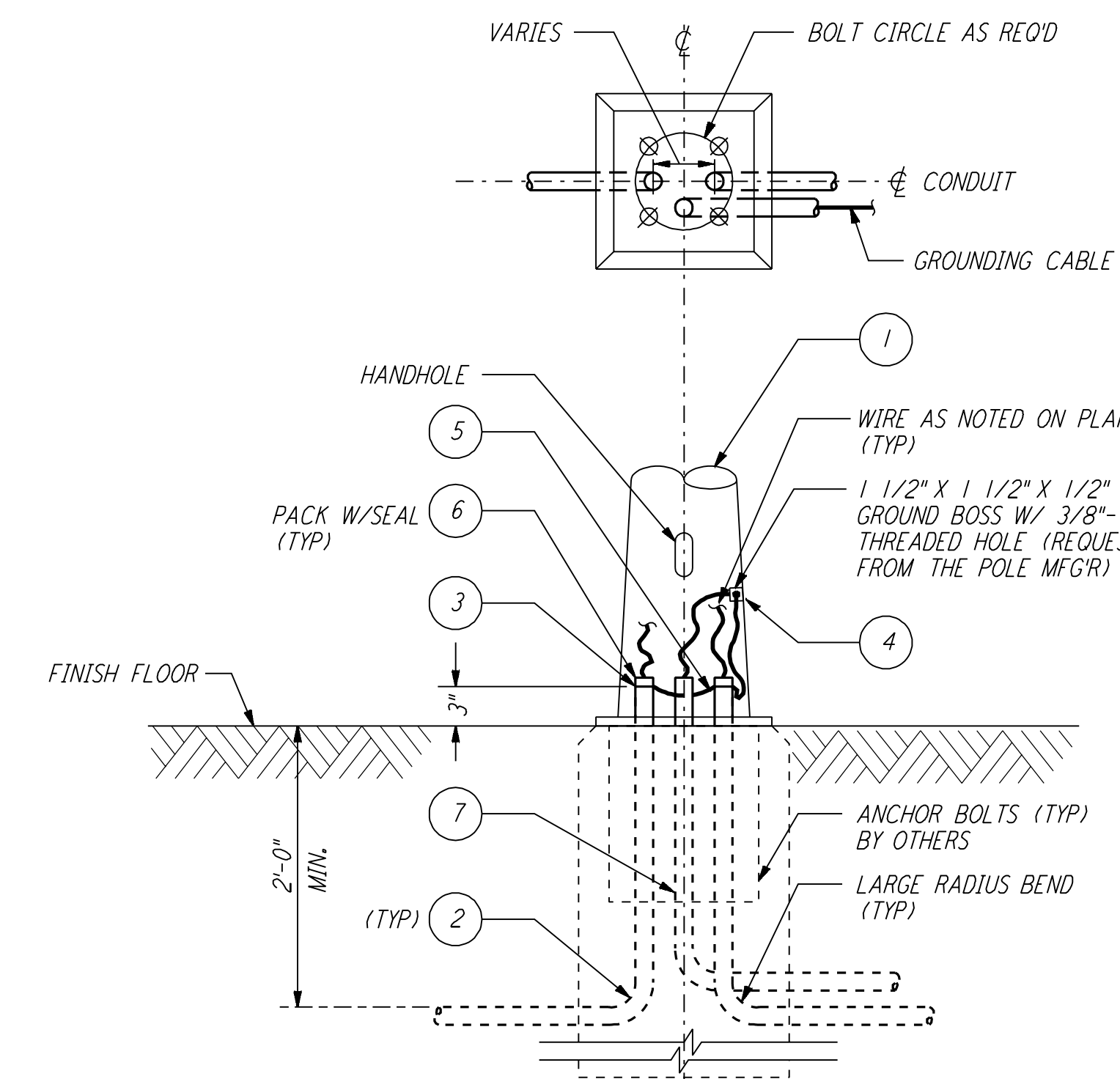


NOTE:
 1. PROTECTIVE COATING ON PIPE SHALL BE RESTORED BY FIELD.

LIST OF MATERIAL

ITEM NO.	QTY	DESCRIPTION
1	AR	MOLD HORIZ #2/0-4\"/>

GROUNDING CONNECTION TO HORIZONTAL STEEL WATER PIPE (7) REF
 N.T.S.



LIST OF MATERIAL

ITEM NO.	QTY	DESCRIPTION
1	1	LIGHTING POLE - AS SPECIFIED
2	AR	CONDUIT, RIGID
3	2	CONDUIT GND BUSHING, #8 WIRE, O.Z. TYPE ABLG
4	1	GND CONN SERVIT POST, BURNDY TYPE K2C23B1
5	3	WIRE, #8 STRANDED CU THW GREEN
6	AR	SCALING COMPOUND, 3M BRAND CP25N/S
7	AR	SCHEDULE 40 PVC 1 1/4\"/>

LIGHTING STANDARD BASE ASSEMBLY (8) REF
 N.T.S.

NO.	DATE	BY	CHKD	ENGR	PROJ	DESCRIPTION
1	8-7-98	JE				ISSUED FOR AS-BUILT

AS-BUILT DRAWINGS

ISSUED FOR CONSTRUCTION	DATE	BY
DRAWN	M. M.	11-15-96
CHECKED	JCL	7-24-96
ENGINEER	KCR	10-25-96
PROJ	T. D. M.	11-15-96

PARSONS
 100 WEST WALNUT STREET
 PASADENA, CALIFORNIA

LIGO
 CALIFORNIA INSTITUTE OF TECHNOLOGY
 MASSACHUSETTS INSTITUTE OF TECHNOLOGY

LASER INTERFEROMETER
 GRAVITATIONAL-WAVE OBSERVATORY
 SITE NO. 2 - LIVINGSTON, LOUISIANA

ELECTRICAL GROUNDING DETAILS SHEET 2

SCALE: NONE CONTRACT NUMBER: PP150969 PROJECT NUMBER: 8094
 SHEET NUMBER: **LA-E-406**