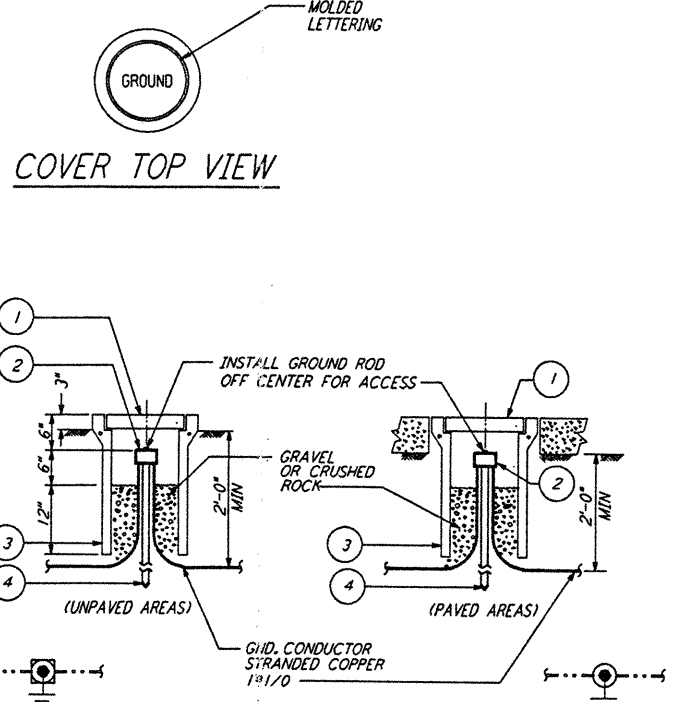


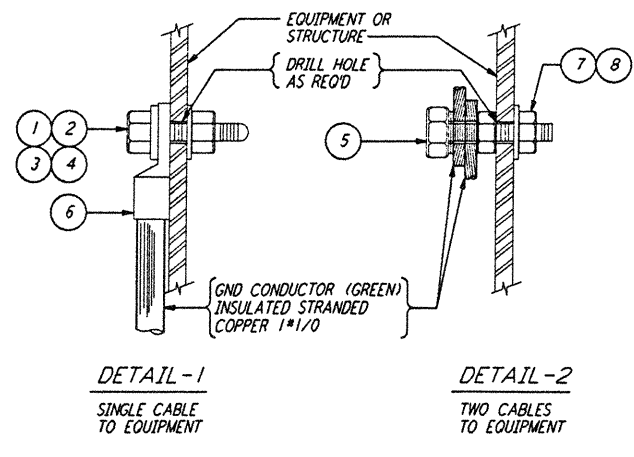
GROUNDING CONNECTION BOX (1) REF  
N.T.S. E-103  
E-202  
E-208



LIST OF MATERIAL

ITEM NO.	QTY	DESCRIPTION
1	1	BROOKS #9 CONCRETE COVER WT=11 LBS WITH 9 GAGE RE-BAR
2	1	CONNECTOR 3 WIRES X 3/4\"/>
3	1	BROOKS #9 BODY 19\"/>
4	1	GROUND ROD COPPER-CLAD STEEL 5/8\"/>

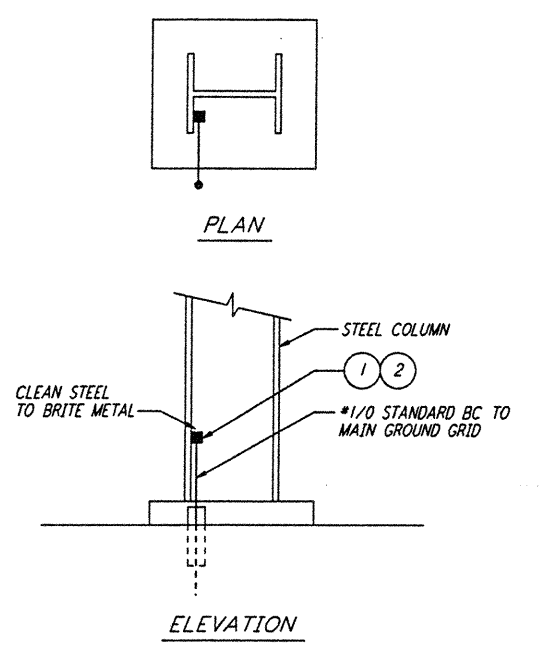
GROUND WELL (2) REF  
N.T.S. E-103  
E-112  
E-202  
E-208



LIST OF MATERIAL

ITEM NO.	QTY	DESCRIPTION
1	1	BOLT, HEX HD SST (SIZE AS RECD)
2	1	NUT, HEX, SST (SIZE AS RECD)
3	1	FLAT WASHER, RD SST (SIZE AS RECD)
4	1	LOCK WASHER, SPRING SST (SIZE AS RECD)
5	1	SERVIT POST, TWO #2-11/0 WIRES SHORT STUD BURNDY TYPE K2C25
6	1	GND CONNECTOR - STRANDED BURNDY QUICK LUG GA
7	1	NUT, 1/2\"/>
8	1	LOCKWASHER, 1/2\", SPRING, DURUM

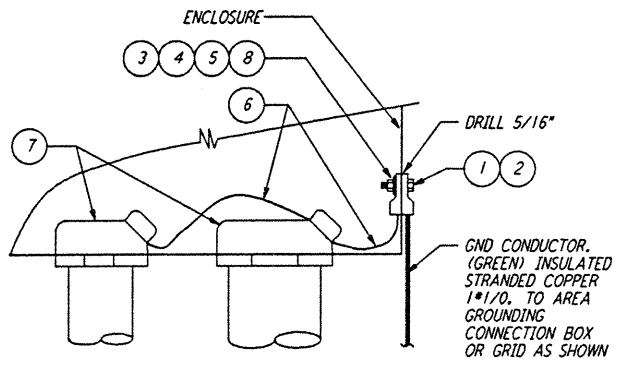
EQUIPMENT GROUNDING (3) REF  
N.T.S. E-202



LIST OF MATERIAL

ITEM NO.	QTY	DESCRIPTION
1	1	CADWELD MOLD #HDVBC-2C
2	1	CARTRIDGE STANDARD POWDER 200 GRAMS

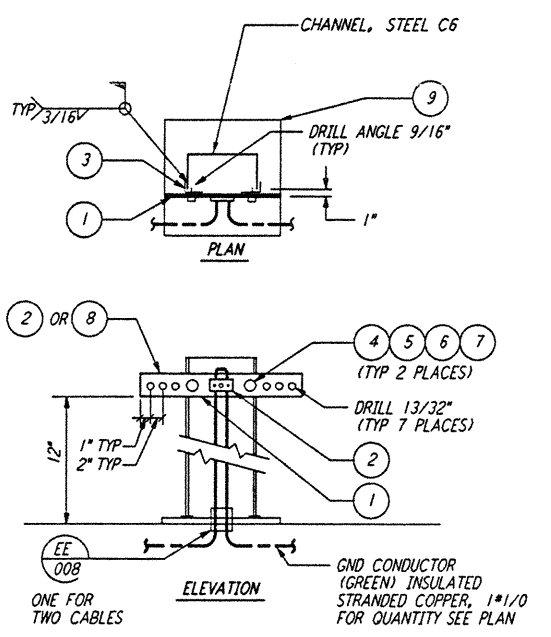
EXOTHERMIC WELD TO STRUCTURE (4) REF  
N.T.S. E-103  
E-202  
E-208



LIST OF MATERIAL

ITEM NO.	QTY	DESCRIPTION
1	1	LUG, #1/0-#2/0 WIRE X 1/4\"/>
2	1	BOLT, 1/4\"/>
3	1	NUT, 1/4\"/>
4	1	FLAT WASHER, 1/4\"/>
5	1	LOCKWASHER, 1/4\"/>
6	AR	WIRE, #8 THW SOFT DRAWN (GREEN) INSULATED STRANDED CU
7	AR	GROUND HUB, MYERS SERIES STAG SIZE AS RECD
8	1	LUG, #8-#4 STR BURNDY TYPE OIKLUG GA4C-B

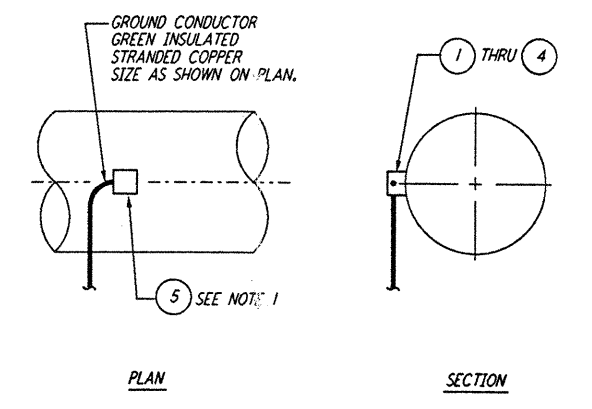
CABINET OR BOX GROUNDING (5) REF  
N.T.S. E-202  
E-409



LIST OF MATERIAL

ITEM NO.	QTY	DESCRIPTION
1	1	COPPER BUS, 1/4\"/>
2	AR	CONN. TWO #4-#2/0 WIRES-FLAT BAR, BURNDY TYPE GCM26
3	2	ANGLE, STEEL 4\"/>
4	2	BOLT, 1/2\"/>
5	2	NUT, 1/2\"/>
6	2	LOCKWASHER, 1/2\"/>
7	2	MALLEABLE IRON SQUARE BEVEL WASHER 1/2\"/>
8	AR	CONN. ONE #4-#2/0 WIRES-FLAT BAR, BURNDY TYPE GBM26
9	1	PLATE 1/4\"/>

GROUNDING CONNECTION PLATE (6) REF  
N.T.S. E-103  
E-112

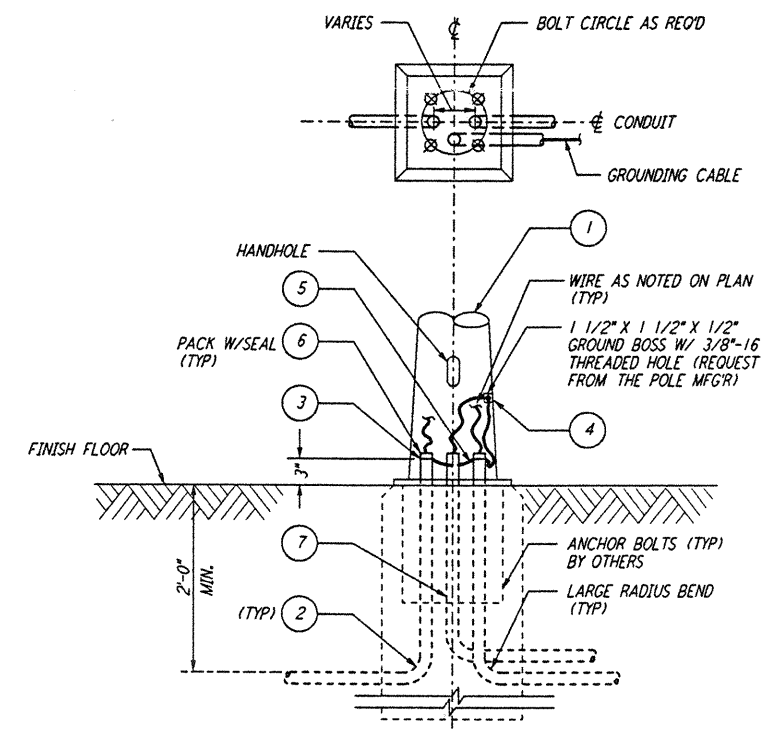


NOTE:  
1. PROTECTIVE COATING ON PIPE SHALL BE RESTORED BY FIELD.

LIST OF MATERIAL

ITEM NO.	QTY	DESCRIPTION
1	AR	MOLD HORIZ #2/0-4\"/>
2	1	CARTRIDGE STANDARD POWDER 90 GRAMS
3	AR	MOLD HORIZ #2/0-10\"/>
4	1	CARTRIDGE STANDARD POWDER 90 GRAMS
5	1	COLD GALVANIZE-TUBE, #2RC OR BITUMASTIC

GROUNDING CONNECTION TO HORIZONTAL STEEL WATER PIPE (7) REF  
N.T.S.



LIST OF MATERIAL

ITEM NO.	QTY	DESCRIPTION
1	1	LIGHTING POLE - AS SPECIFIED
2	AR	CONDUIT, RIGID
3	2	CONDUIT GND BUSHING, #8 WIRE, O.Z. TYPE ABLG
4	1	GND CONN SERVIT POST, BURNDY TYPE K2C23B1
5	3	WIRE, #8 STRANDED CU THW GREEN
6	AR	SEALING COMPOUND, 3M BRAND CP231V/S
7	AR	SCHEDULE #0 PVC 1 1/4\"/>

LIGHTING STANDARD BASE ASSEMBLY (8) REF  
N.T.S.

LIGO-D961042-B-O

not be reproduced, copied, loaned, exhibited, or used in any other way, except by written consent from PARSONS to the borrower.

This document and the design it covers are the property of PARSONS. They are loaned only with the borrower's expressed written agreement that they will

361 JUN 19 2003 11:30 AM 1176 5113006 J:\LIGOSITE\SUBS\1176\KLE\WDR176

REV	NO.	DATE	BY	CHKD	ENGR	PROJ	DESCRIPTION
B	6-14-96	TJM	JCL	JA	TJM		FINAL DESIGN REVIEW
A	10-31-95				TJM		PRELIMINARY DESIGN REVIEW

NO.	DATE	BY	CHKD	ENGR	PROJ	DESCRIPTION

DRAWN	M.M.

CHECKED	ENGINEER	PROJ

**PARSONS**  
100 WEST WALNUT STREET  
PASADENA, CALIFORNIA

**LIGO**  
CALIFORNIA INSTITUTE OF TECHNOLOGY  
MASSACHUSETTS INSTITUTE OF TECHNOLOGY

LASER INTERFEROMETER  
GRAVITATIONAL-WAVE OBSERVATORY  
SITE NO. 2 - LIVINGSTON, LOUISIANA  
ELECTRICAL  
GROUNDING DETAILS  
SHEET 2  
SCALE: NONE  
CONTRACT NUMBER: PP150969  
PROJECT NUMBER: 8094  
LA-E-406