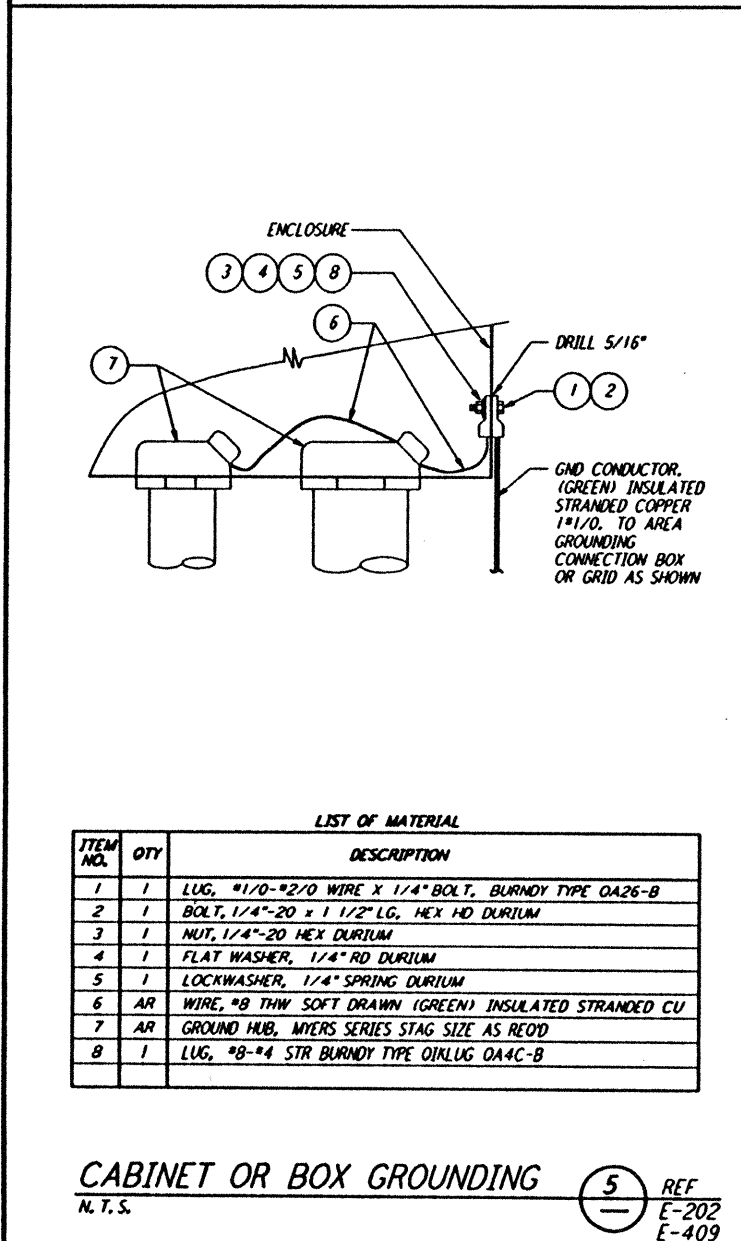


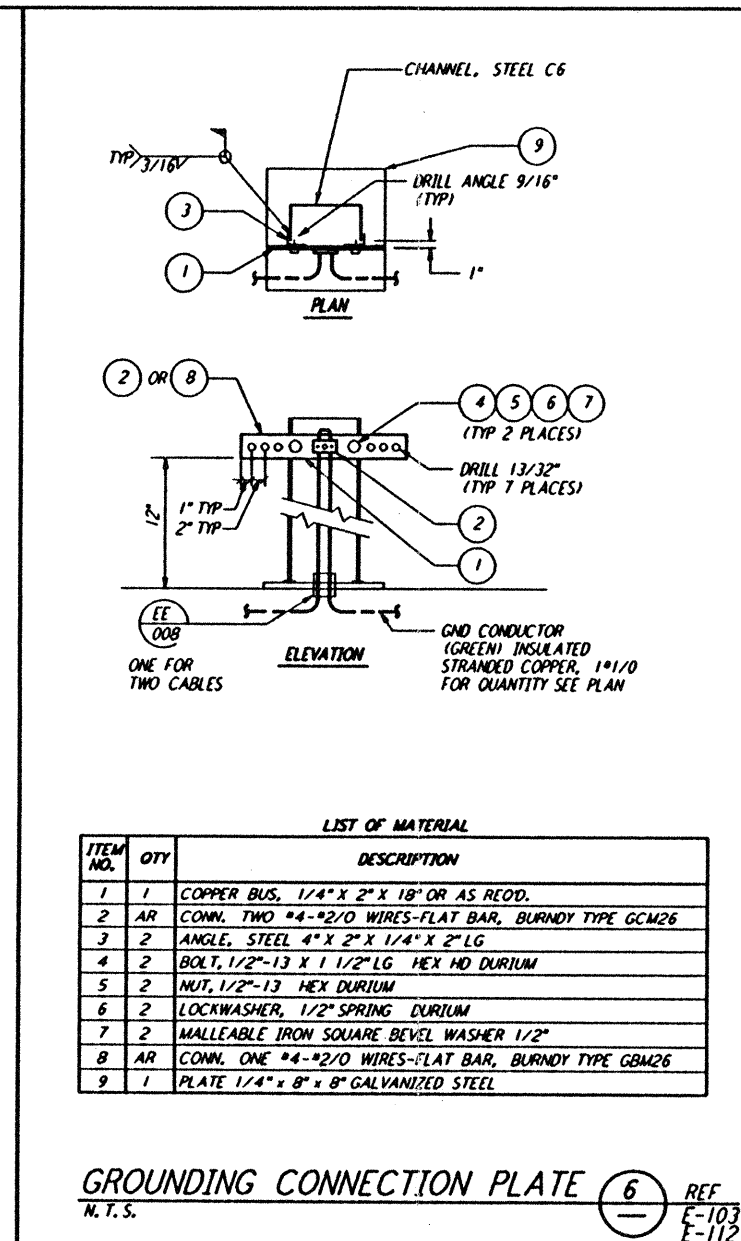
GROUNDING CONNECTION BOX (1) REF E-103 E-202 E-208
 N.T.S.



LIST OF MATERIAL

ITEM NO.	QTY	DESCRIPTION
1	1	LUG, #1/0-#2/0 WIRE X 1/4" BOLT, BURNDY TYPE OA26-B
2	1	BOLT, 1/4"-20 X 1 1/2" LG. HEX HD DURILUM
3	1	NUT, 1/4"-20 HEX DURILUM
4	1	FLAT WASHER, 1/4" RD DURILUM
5	1	LOCKWASHER, 1/4" SPRING DURILUM
6	AR	WIRE, #8 THW SOFT DRAWN (GREEN) INSULATED STRANDED CU
7	AR	GROUND HUB, MYERS SERIES STAG SIZE AS RECD
8	1	LUG, #8-#4 STR BURNDY TYPE OILUG OA4C-B

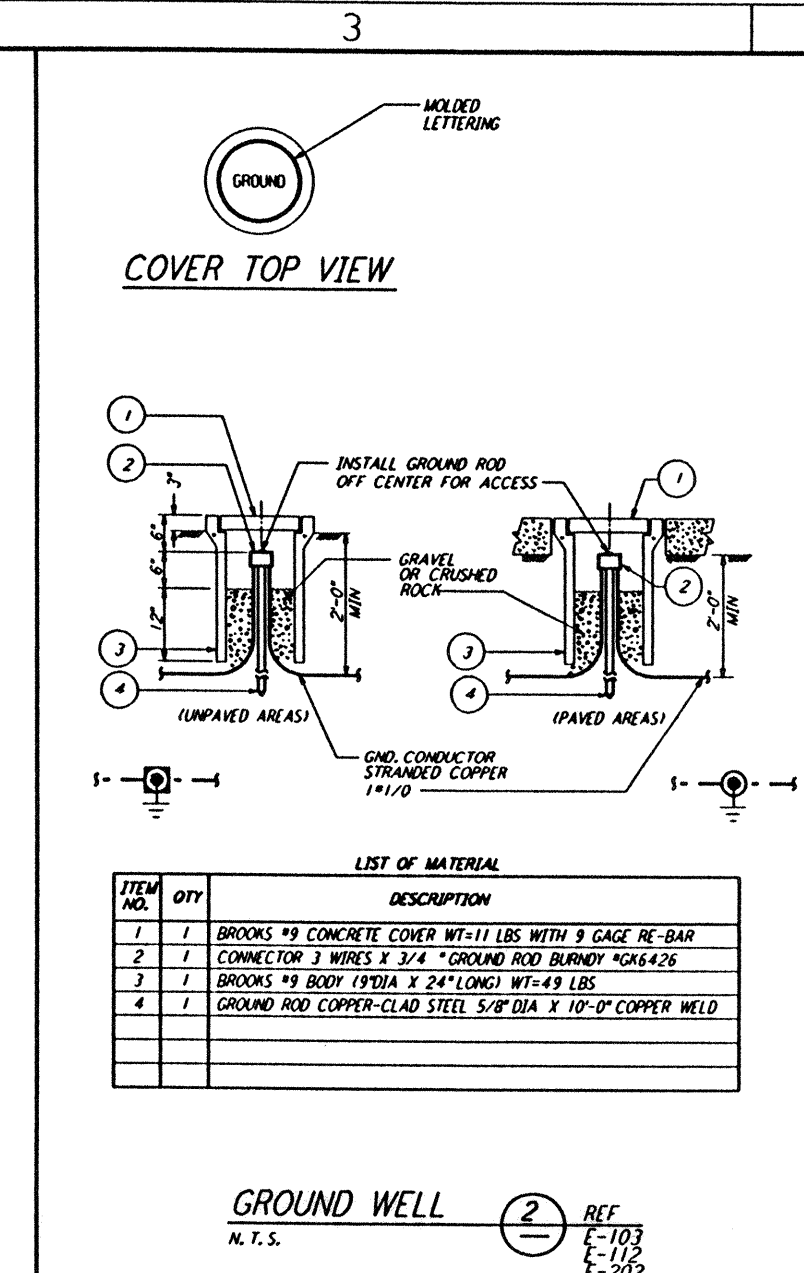
CABINET OR BOX GROUNDING (5) REF E-202 E-409
 N.T.S.



LIST OF MATERIAL

ITEM NO.	QTY	DESCRIPTION
1	1	COPPER BUS, 1/4" X 2" X 18" OR AS RECD.
2	AR	CONN. TWO #4-#2/0 WIRES-FLAT BAR, BURNDY TYPE GCM26
3	2	ANGLE, STEEL 4" X 2" X 1/4" X 2" LG
4	2	BOLT, 1/2"-13 X 1 1/2" LG. HEX HD DURILUM
5	2	NUT, 1/2"-13 HEX SPRING
6	2	LOCKWASHER, 1/2" SPRING DURILUM
7	2	MALLEABLE IRON SQUARE BEVEL WASHER 1/2"
8	AR	CONN. ONE #4-#2/0 WIRES-FLAT BAR, BURNDY TYPE GCM26
9	1	PLATE 1/4" X 8" X 8" GALVANIZED STEEL

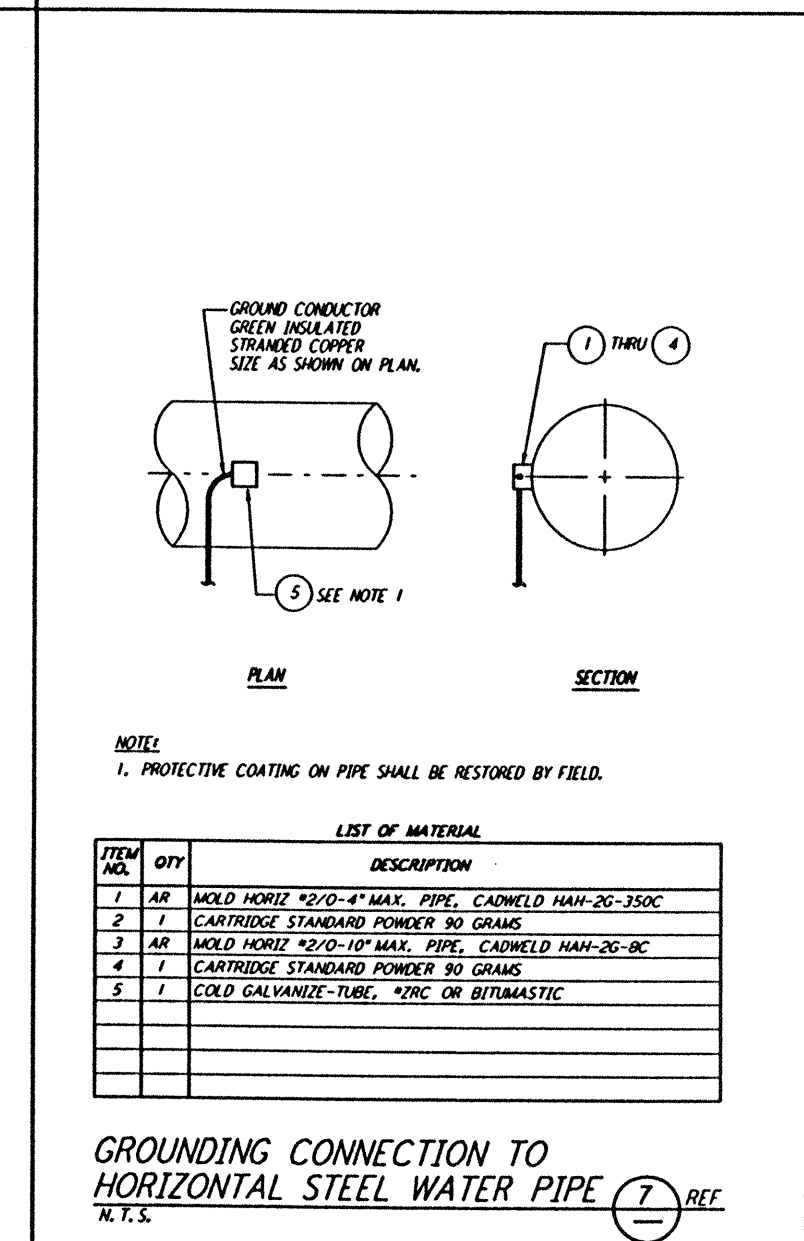
GROUNDING CONNECTION PLATE (6) REF E-103 E-112
 N.T.S.



LIST OF MATERIAL

ITEM NO.	QTY	DESCRIPTION
1	1	BROOKS #9 CONCRETE COVER WT=11 LBS WITH 9 GAGE RE-BAR
2	1	CONNECTOR 3 WIRES X 3/4" GROUND ROD BURNDY #GK6426
3	1	BROOKS #9 BODY 19.0 DIA X 24" LONG WT=49 LBS
4	1	GROUND ROD COPPER-CLAD STEEL 5/8" DIA X 10'-0" COPPER WELD

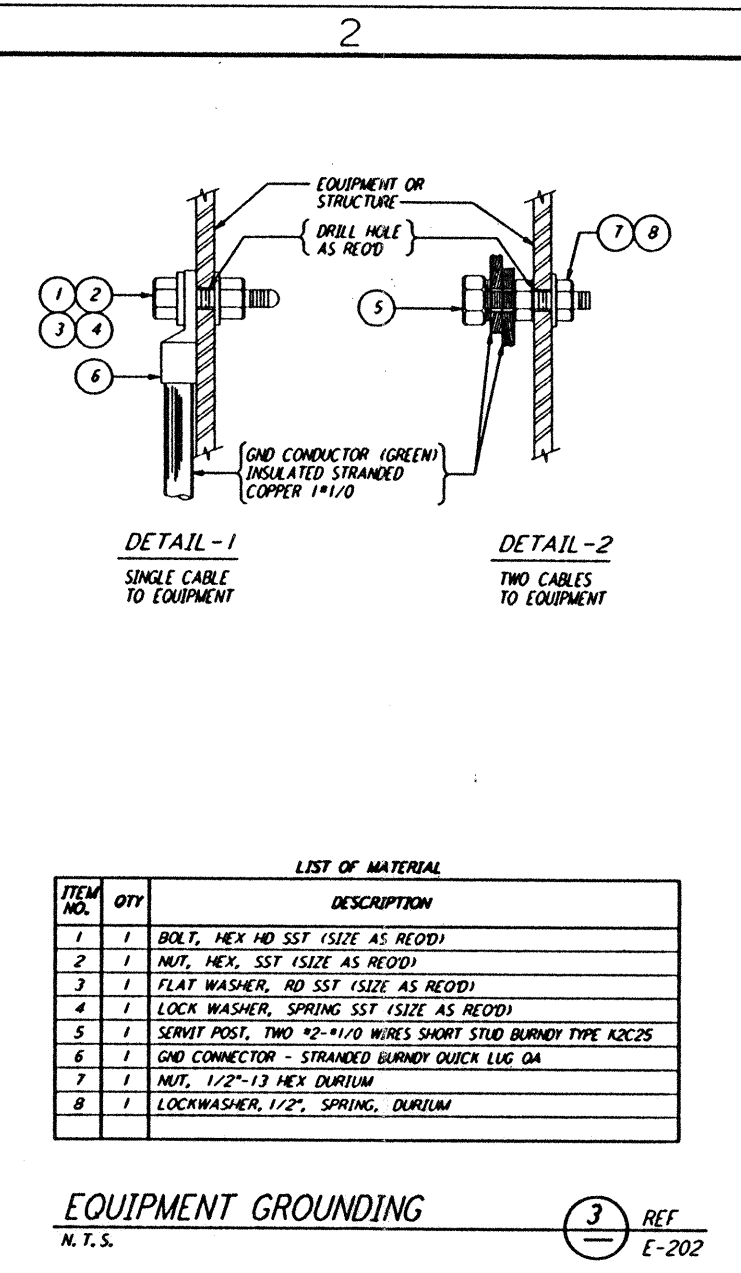
GROUND WELL (2) REF E-103 E-112 E-202 E-208
 N.T.S.



LIST OF MATERIAL

ITEM NO.	QTY	DESCRIPTION
1	AR	MOLD HORIZ #2/0-4" MAX. PIPE, CADWELD HAH-2G-350C
2	1	CARTRIDGE STANDARD POWDER 90 GRAMS
3	AR	MOLD HORIZ #2/0-10" MAX. PIPE, CADWELD HAH-2G-8C
4	1	CARTRIDGE STANDARD POWDER 90 GRAMS
5	1	COLD GALVANIZE-TUBE, #2RC OR BITUMASTIC

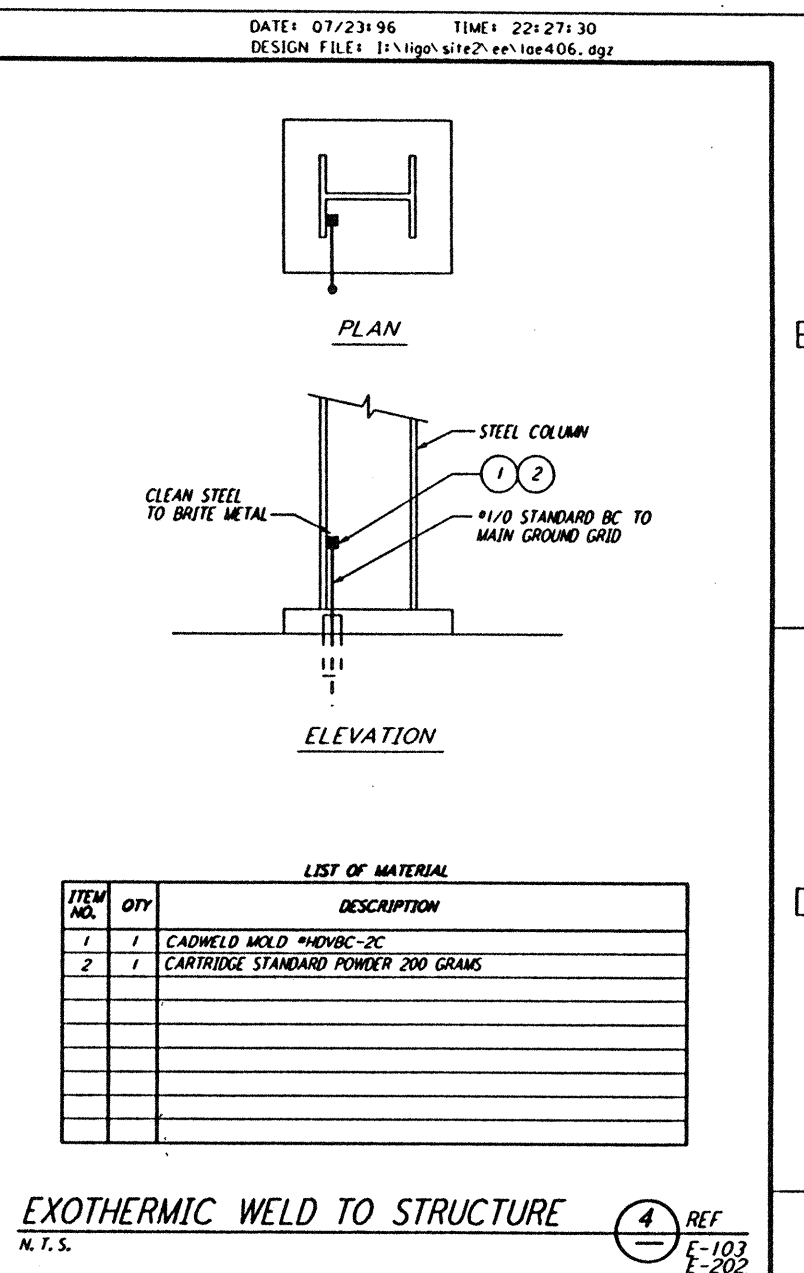
GROUNDING CONNECTION TO HORIZONTAL STEEL WATER PIPE (7) REF
 N.T.S.



LIST OF MATERIAL

ITEM NO.	QTY	DESCRIPTION
1	1	BOLT, HEX HD SST (SIZE AS RECD)
2	1	NUT, HEX, SST (SIZE AS RECD)
3	1	FLAT WASHER, RD SST (SIZE AS RECD)
4	1	LOCK WASHER, SPRING SST (SIZE AS RECD)
5	1	SERVIT POST, TWO #2-#1/0 WIRES SHORT STUD BURNDY TYPE K2C2S
6	1	GND CONNECTOR - STRANDED BURNDY QUICK LUG GA
7	1	NUT, 1/2"-13 HEX DURILUM
8	1	LOCKWASHER, 1/2", SPRING, DURILUM

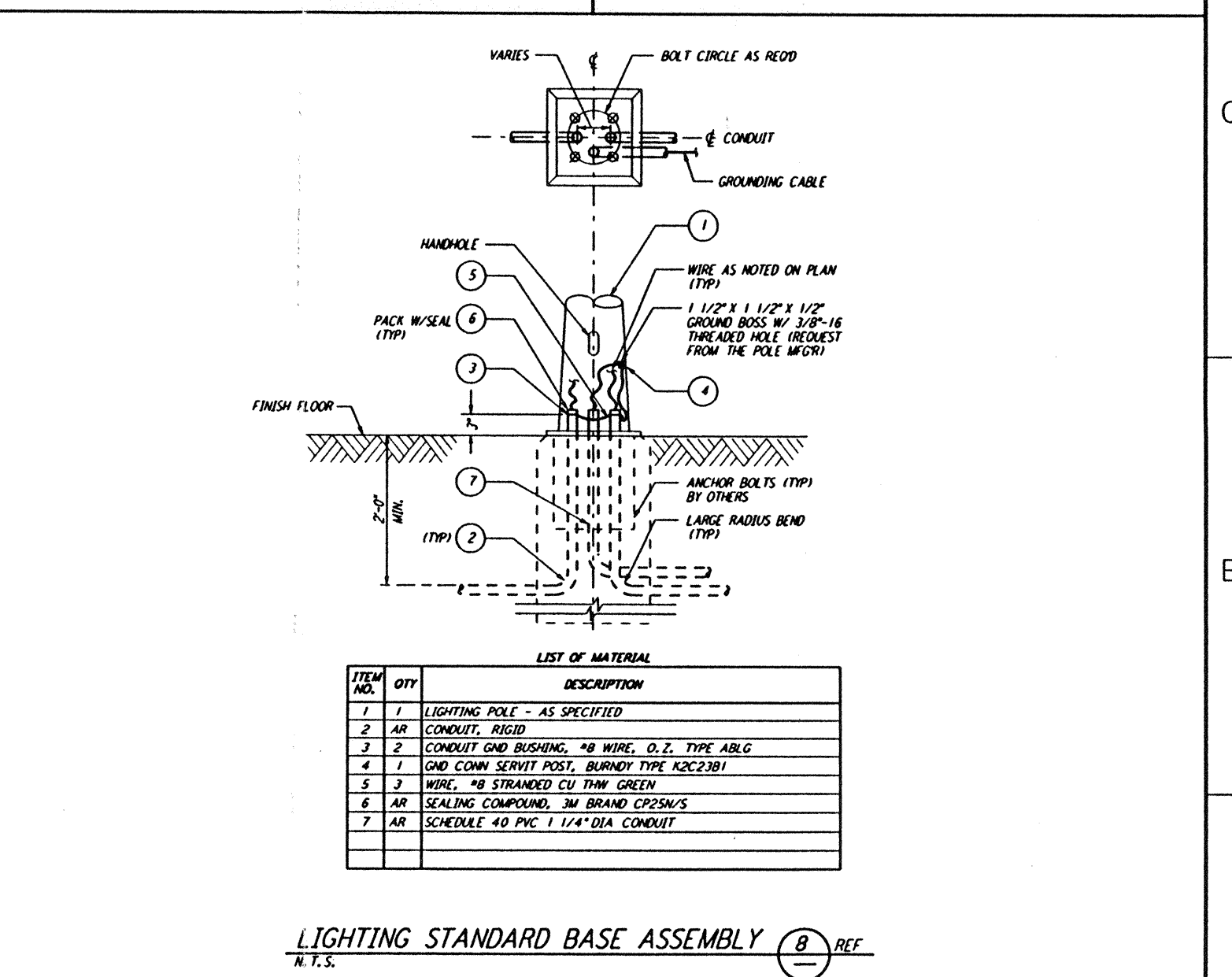
EQUIPMENT GROUNDING (3) REF E-202
 N.T.S.



LIST OF MATERIAL

ITEM NO.	QTY	DESCRIPTION
1	1	CADWELD MOLD #HDVBC-2C
2	1	CARTRIDGE STANDARD POWDER 200 GRAMS

EXOTHERMIC WELD TO STRUCTURE (4) REF E-103 E-202 E-208
 N.T.S.



LIST OF MATERIAL

ITEM NO.	QTY	DESCRIPTION
1	1	LIGHTING POLE - AS SPECIFIED
2	AR	CONDUIT, RIGID
3	2	CONDUIT GND BUSHING, #8 WIRE, O.Z. TYPE ABLG
4	1	GND CONN SERVIT POST, BURNDY TYPE K2C23B1
5	2	WIRE, #8 STRANDED CU THW GREEN
6	AR	SEALING COMPOUND, 3M BRAND CP25M/S
7	AR	SCHEDULE 40 PVC 1 1/4" DIA CONDUIT

LIGHTING STANDARD BASE ASSEMBLY (8) REF
 N.T.S.

NO.	DATE	BY	CHKD	ENGR	PROJ	DESCRIPTION
C	7-24-96	MM	JCL		TDW	ISSUED FOR BID
B	6-14-96	MM	JCL	KR	TDW	FINAL DESIGN REVIEW
A	10-31-95				TDW	PRELIMINARY DESIGN REVIEW

DRAWN	M. M.
CHECKED	
ENGINEER	
PROJ	

<p>100 WEST WALNUT STREET PASADENA, CALIFORNIA</p>	<p>CALIFORNIA INSTITUTE OF TECHNOLOGY MASSACHUSETTS INSTITUTE OF TECHNOLOGY</p>	LASER INTERFEROMETER GRAVITATIONAL-WAVE OBSERVATORY SITE NO. 2 - LIVINGSTON, LOUISIANA	
		ELECTRICAL GROUNDING DETAILS SHEET 2	SCALE: NONE CONTRACT NUMBER: PP150969 PROJECT NUMBER: 8094 LA-E-406

This document and the design it covers are the property of PARSONS. They are loaned only with the borrower's expressed written agreement that they will not be reproduced, copied, loaned, exhibited, or used in any other way, except by written consent from PARSONS to the borrower.

Tue Jul 23 22:26:54 1996 S3-V18B2 J:\PLOTS\QUEUES\V18B2\EE406.PRF