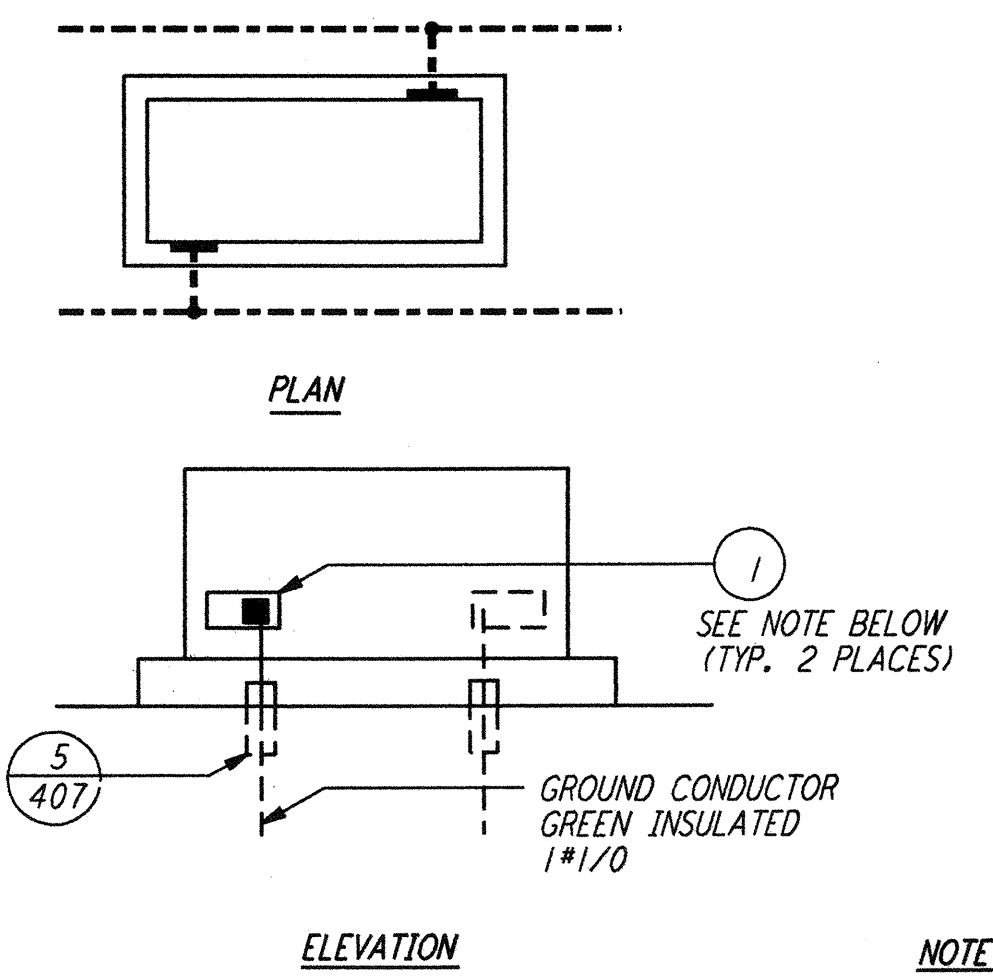


5

4

3

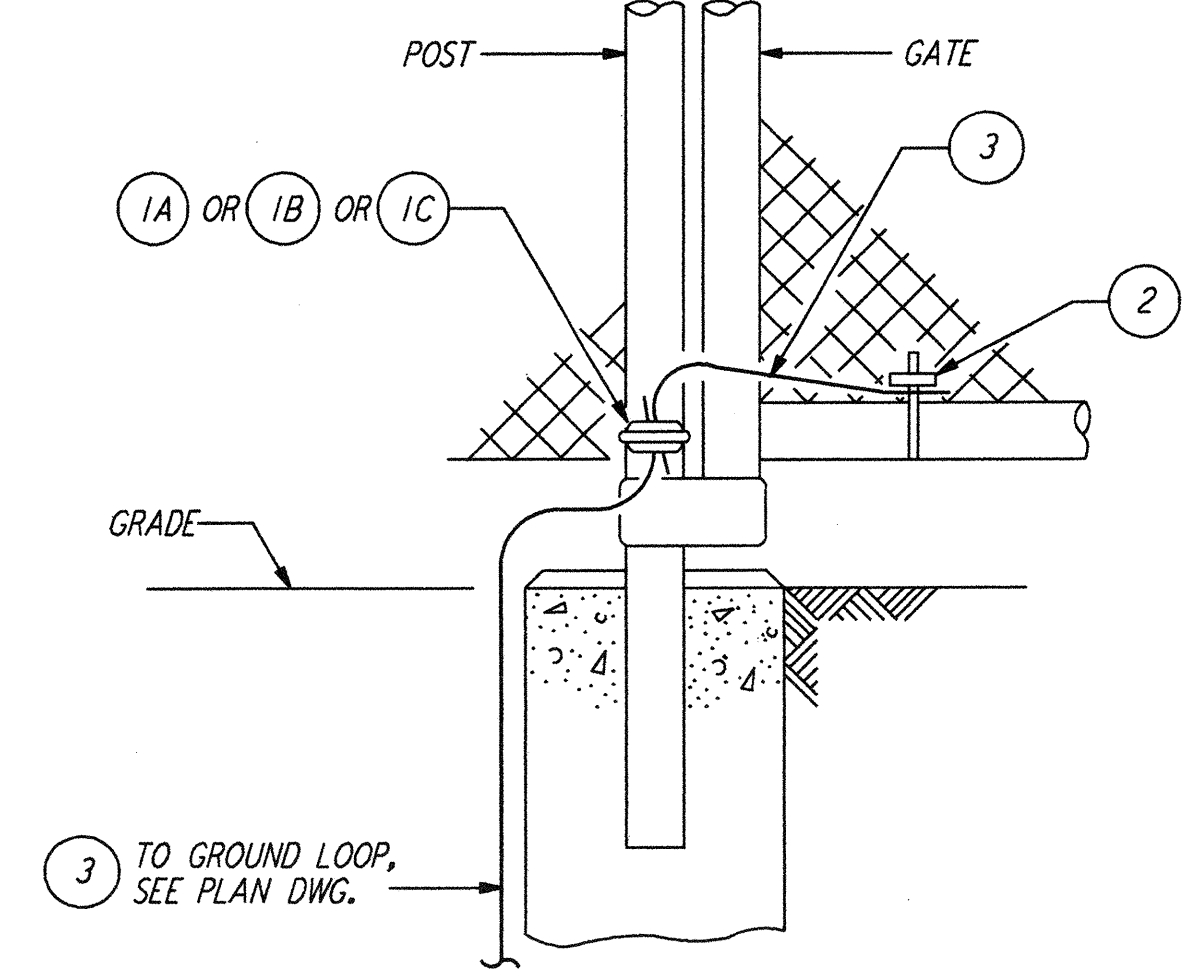
2



NOTE:
 IF GROUNDING PAD IS NOT PROVIDED, INSTALL SERVIT POST IN XFRM/EQUIPMENT BASE

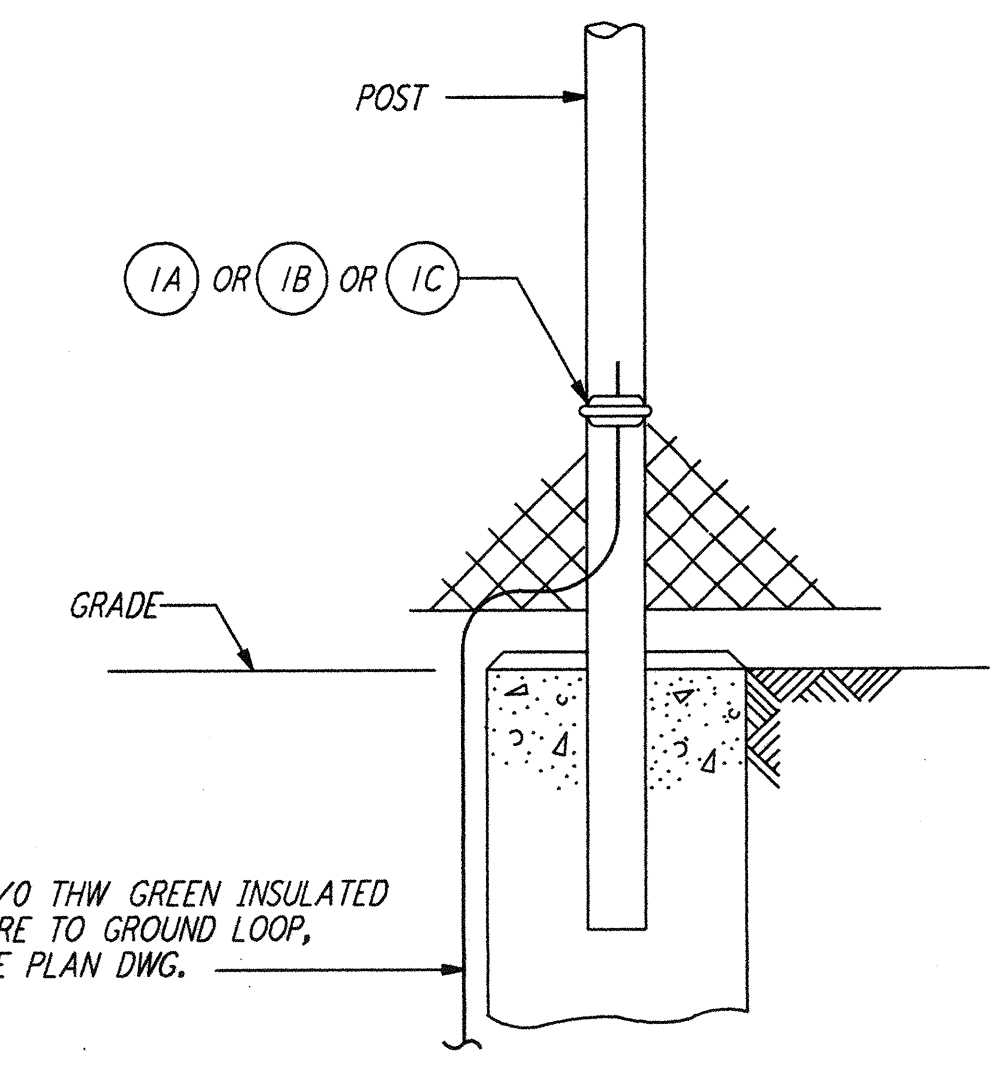
ITEM NO.	QTY	DESCRIPTION
1	2	SERVIT POST TWO #2-#2/0 WIRES SHORT STUD BURNDY TYPE K2C-26

TRANSFORMER/EQUIPMENT GROUNDING (1) REF
 N. T. S. E-112 E-202



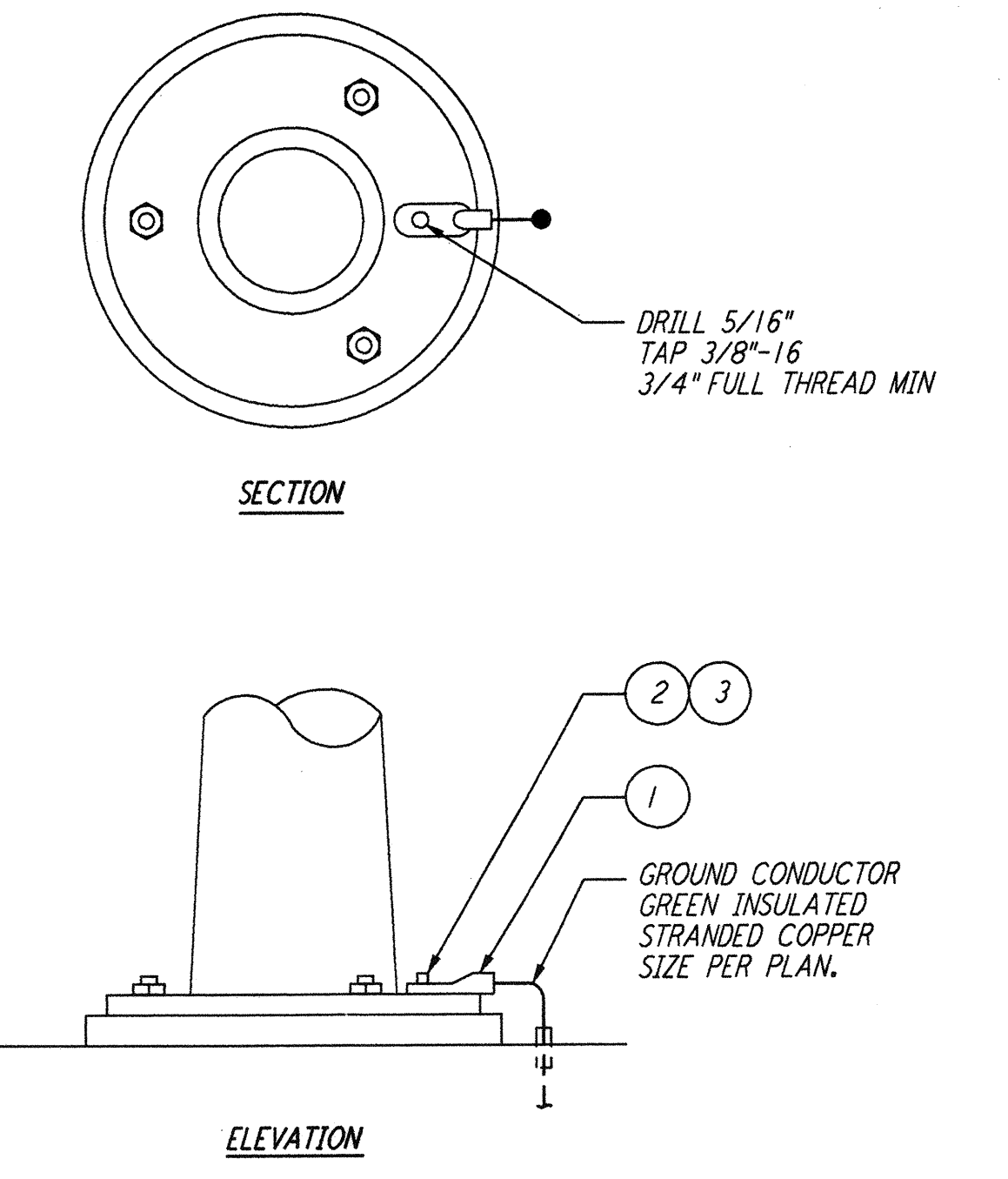
ITEM NO.	QTY	DESCRIPTION
1A	1	GROUND CONNECTOR - 2" DIA POST, BURNDY TYPE GD1826
1B	1	GROUND CONNECTOR - 2 1/2" DIA POST, BURNDY TYPE GD1926
1C	1	GROUND CONNECTOR - 3" DIA POST, BURNDY TYPE GD2026
2	1	GROUND CONNECTOR - 1 1/2" DIA TUBE, BURNDY TYPE GAR1726
3	AR	FLEXIBLE COPPER GROUND BRAID 100A RATING, BURNDY MFG.

FENCE GATE GROUNDING (2) REF
 N. T. S. E-112 E-202



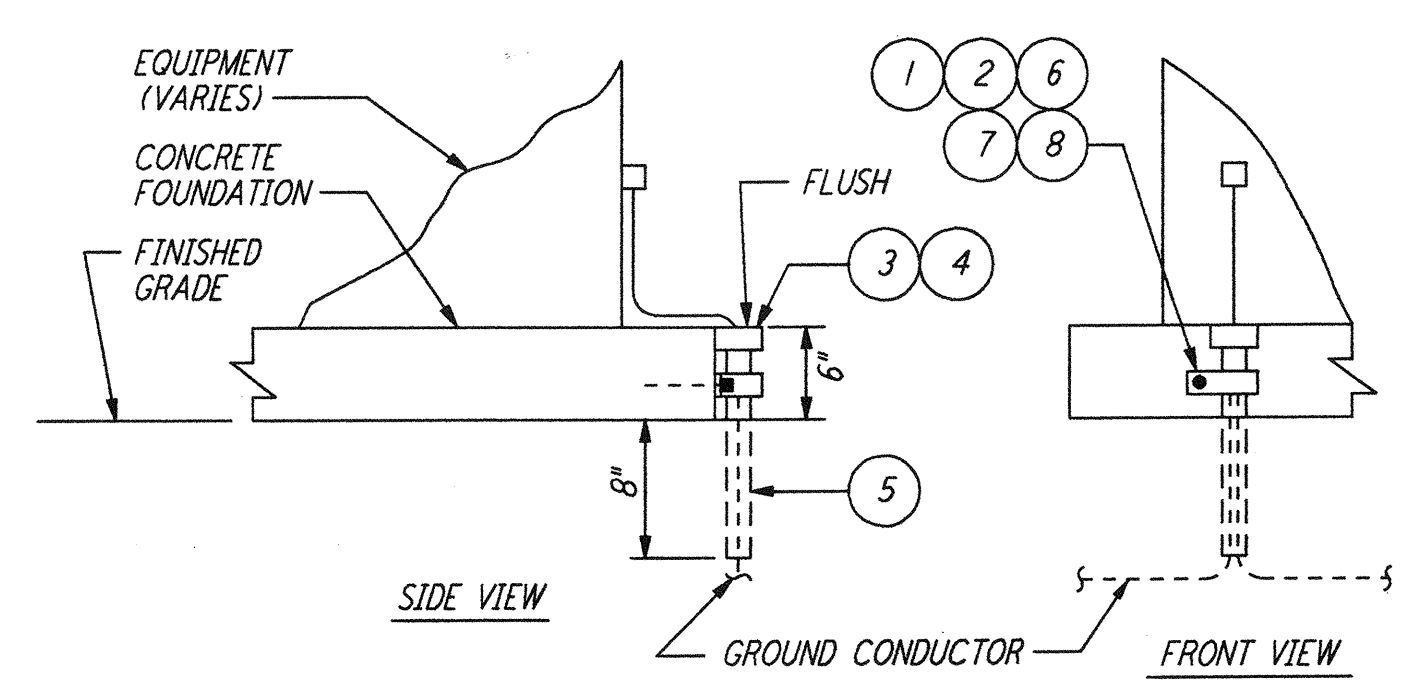
ITEM NO.	QTY	DESCRIPTION
1A	1	GROUND CONNECTOR - 2" DIA POST, BURNDY #GARI826
1B	1	GROUND CONNECTOR - 2 1/2" DIA POST, BURNDY #GARI926
1C	1	GROUND CONNECTOR - 3" DIA POST, BURNDY #GAR2026

FENCE POST GROUNDING (3) REF
 N. T. S. E-202



ITEM NO.	QTY	DESCRIPTION
1	1	LUG, #1/0-2/0 WIRE, BURNDY TYPE OA26-B (USE BURNDY #02A26-2N WHEN USING 2 CABLES)
2	1	BOLT, 3/8"-16 X 3/4" LG HEX HD DURUM
3	1	LOCKWASHER, 3/8" SPRING DURUM

LIGHTING POLE/BOLLARD GROUNDING (4) REF
 N. T. S.



ITEM NO.	QTY	DESCRIPTION
1	1	CLAMP, GALV STEEL 1 1/4" DIA CONDUIT
2	1	BOLT, 1/4"-20 x 1" LG HEX HD SST
3	1	END BELL, FOR 1 1/4" DIA PVC CONDUIT
4	AR	CEMENT FOR PVC CONDUIT AND FITTINGS
5	1FT	CONDUIT PVC 1 1/4" DIA SCH 40
6	1	ANCHOR, MASONRY 1/4"-20
7	1	CLAMP BACK, 1 1/4", GALV STEEL
8	1	WASHER, 1/4" FLAT SST

GROUNDING CABLE PROTECTIVE SLEEVE (5) REF
 N. T. S. E-112 E-202 E-208

ISSUED FOR CONSTRUCTION			
DRAWN	M. M.	11-15-96	
CHECKED	JCL	7-24-96	
ENGINEER	KCR	10-25-96	
PROJ	T. D. M.	11-15-96	

AS-BUILT DRAWINGS

NO.	DATE	BY	CHKD	ENGR	PROJ	DESCRIPTION
1	8-7-98	JE	AK	AK	AK	ISSUED FOR AS-BUILT

PARSONS
 100 WEST WALNUT STREET
 PASADENA, CALIFORNIA

LIGO
 CALIFORNIA INSTITUTE OF TECHNOLOGY
 MASSACHUSETTS INSTITUTE OF TECHNOLOGY

LIGO-D961043-01-0
 LASER INTERFEROMETER
 GRAVITATIONAL-WAVE OBSERVATORY
 SITE NO. 2 - LIVINGSTON, LOUISIANA

TITLE	SCALE	CONTRACT NUMBER	PROJECT NUMBER
ELECTRICAL GROUNDING DETAILS SHEET 3	NONE	PP150969	8094
REVISIONS			REVISIONS
LA-E-407			

This document and the design it covers are the property of PARSONS. They are loaned only with the borrower's expressed written agreement that they will not be reproduced, copied, loaned, exhibited, or used in any other way, except by written consent from PARSONS to the borrower.

This document and the design it covers are the property of PARSONS. They are loaned only with the borrower's expressed written agreement that they will not be reproduced, copied, loaned, exhibited, or used in any other way, except by written consent from PARSONS to the borrower.

I:\ligo\site2\ee\lge407.dwg