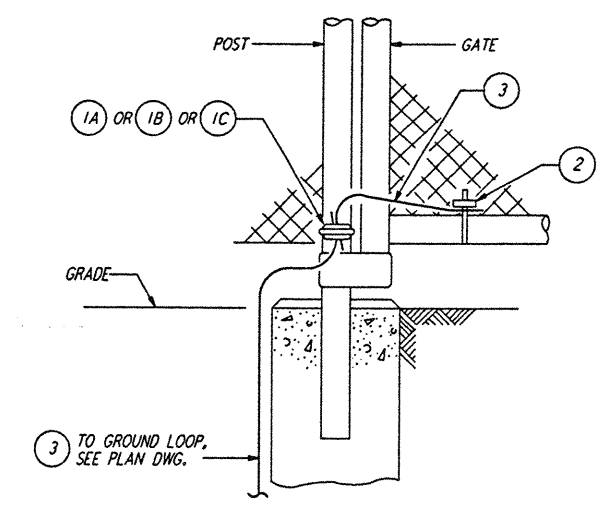


NOTE:
 IF GROUNDING PAD IS NOT PROVIDED, INSTALL SERVIT POST IN XFMR/EQUIPMENT BASE

LIST OF MATERIAL

ITEM NO.	QTY	DESCRIPTION
1	2	SERVIT POST TWO #2-#2/0 WIRES SHORT STUD BURNDY TYPE K2C-26

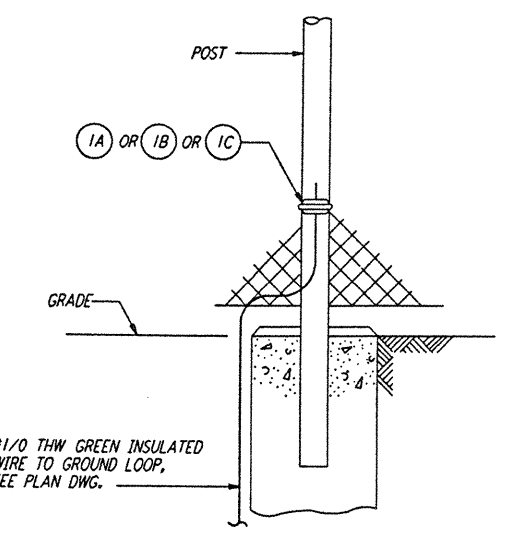
TRANSFORMER/EQUIPMENT GROUNDING (1) REF
 N. T. S. E-112 E-202



LIST OF MATERIAL

ITEM NO.	QTY	DESCRIPTION
1A	1	GROUND CONNECTOR - 2" DIA. POST, BURNDY TYPE GQ1826
1B	1	GROUND CONNECTOR - 2 1/2" DIA. POST, BURNDY TYPE GQ1926
1C	1	GROUND CONNECTOR - 3" DIA. POST, BURNDY TYPE GQ2026
2	1	GROUND CONNECTOR - 1 1/2" DIA. TUBE, BURNDY TYPE GAR1726
3	AR	FLEXIBLE COPPER GROUND BRAID 100A RATING, BURNDY MFCB.

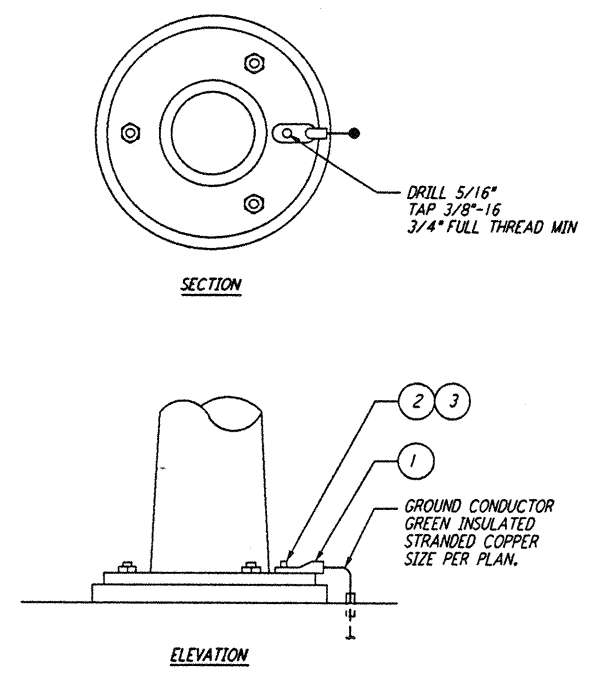
FENCE GATE GROUNDING (2) REF
 N. T. S. E-112 E-202



LIST OF MATERIAL

ITEM NO.	QTY	DESCRIPTION
1A	1	GROUND CONNECTOR - 2" DIA. POST, BURNDY #GAR1826
1B	1	GROUND CONNECTOR - 2 1/2" DIA. POST, BURNDY #GAR1926
1C	1	GROUND CONNECTOR - 3" DIA. POST, BURNDY #GAR2026

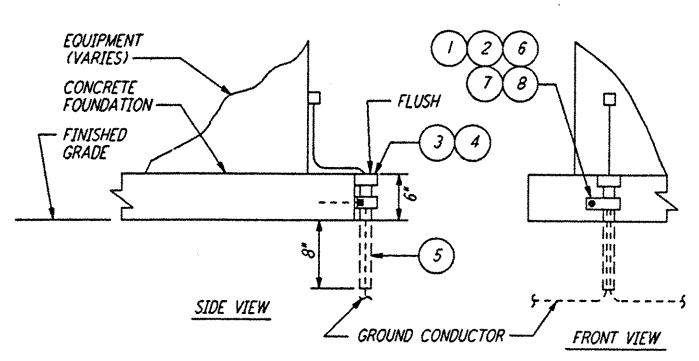
FENCE POST GROUNDING (3) REF
 N. T. S. E-202



LIST OF MATERIAL

ITEM NO.	QTY	DESCRIPTION
1	1	LUG, #1/0-2/0 WIRE, BURNDY TYPE QA26-B (USE BURNDY #02A26-2N WHEN USING 2 CABLES)
2	1	BOLT, 3/8"-16 X 3/4" LG. HEX. HD. DURUM
3	1	LOCKWASHER, 3/8" SPRING DURUM

LIGHTING POLE/BOLLARD GROUNDING (4) REF
 N. T. S.



LIST OF MATERIAL

ITEM NO.	QTY	DESCRIPTION
1	1	CLAMP, GALV STEEL 1 1/4" DIA. CONDUIT
2	1	BOLT, 1/4"-20 X 1" LG. HEX. HD. SST
3	1	END BELL, FOR 1 1/4" DIA. PVC CONDUIT
4	AR	CEMENT FOR PVC CONDUIT AND FITTINGS
5	1 FT	CONDUIT, PVC 1 1/4" DIA. SCH 40
6	1	ANCHOR, MASONRY 1/4"-20
7	1	CLAMP BACK, 1 1/4", GALV STEEL
8	1	WASHER, 1/4" * FLAT SST

GROUNDING CABLE PROTECTIVE SLEEVE (5) REF
 N. T. S. E-112 E-202 E-208

LIGO-D961043-B-O

NO.	DATE	BY	CHKD	ENGR	PROJ	DESCRIPTION
B	6-14-96	JCL	WDM			FINAL DESIGN REVIEW
A	10-31-95					PRELIMINARY DESIGN REVIEW

DRAWN	M. M.
CHECKED	
ENGINEER	
PROJ	

PARSONS
 100 WEST WALNUT STREET
 PASADENA, CALIFORNIA

LIGO
 CALIFORNIA INSTITUTE OF TECHNOLOGY
 MASSACHUSETTS INSTITUTE OF TECHNOLOGY

LASER INTERFEROMETER
 GRAVITATIONAL-WAVE OBSERVATORY
 SITE NO. 2 - LIVINGSTON, LOUISIANA

ELECTRICAL GROUNDING DETAILS SHEET 3

LA-E-407

This document and the design it covers are the property of PARSONS. They are loaned only with the borrower's expressed written agreement that they will not be reproduced, copied, loaned, exhibited, or used in any other way, except by written consent from PARSONS to the borrower.

This document and the design it covers are the property of PARSONS. They are loaned only with the borrower's expressed written agreement that they will not be reproduced, copied, loaned, exhibited, or used in any other way, except by written consent from PARSONS to the borrower.

201 JUN 10 11:28:03 1998 ST-LR02C J:\VOLUME\RES\1\B06\407\DWG\PPR

E
D
C
B
A
LIGOLAF_BDR