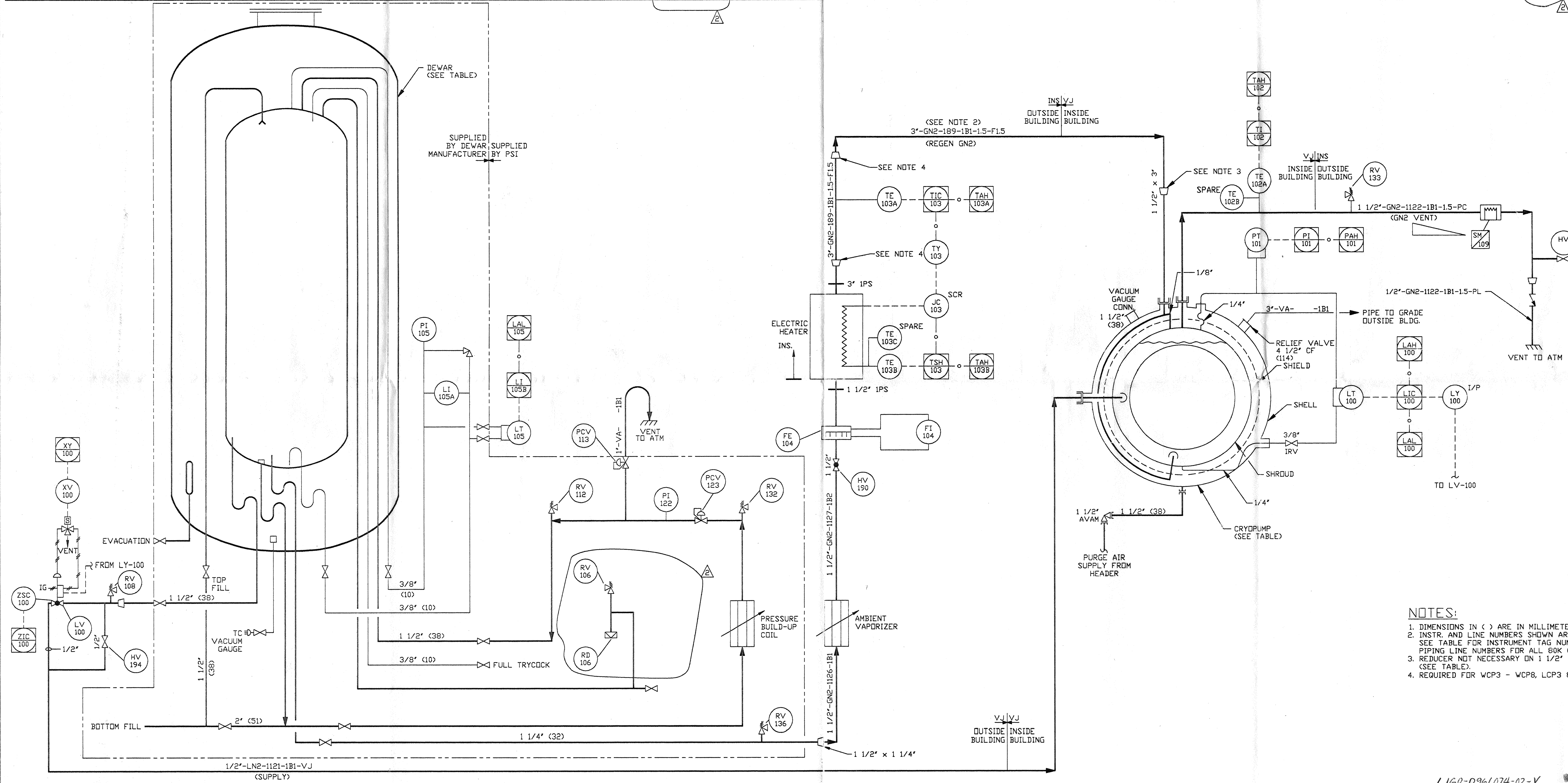


CRYOPUMP	LINE NO. LN2	LINE NO. G2 VENT	LINE NO. REGEN G2	LINE NO.	LINE NO.	VENT HEATER	DEWAR
WCP1	LT-100	LV-100	PT-101	PI-101	TE-102A,B	TI-102	103A,B,C
WCP2	LT-150	LV-150	PT-151	PI-151	TE-152A,B	TI-152	153A,B,C
WCP3	LT-200	LV-200	PT-201	PI-201	TE-202A,B	TI-202	203A,B,C
WCP4	LT-250	LV-250	PT-251	PI-251	TE-252A,B	TI-252	253A,B,C
WCP5	LT-300	LV-300	PT-301	PI-301	TE-302A,B	TI-302	303A,B,C
WCP6	LT-350	LV-350	PT-351	PI-351	TE-352A,B	TI-352	353A,B,C
WCP7	LT-400	LV-400	PT-401	PI-401	TE-402A,B	TI-402	403A,B,C
WCP8	LT-500	LV-500	PT-501	PI-501	TE-502A,B	TI-502	503A,B,C
LCP1	LT-600	LV-600	PT-601	PI-601	TE-602A,B	TI-602	603A,B,C
LCP2	LT-650	LV-650	PT-651	PI-651	TE-652A,B	TI-652	653A,B,C
LCP3	LT-700	LV-700	PT-701	PI-701	TE-702A,B	TI-702	703A,B,C
LCP4	LT-800	LV-800	PT-801	PI-801	TE-802A,B	TI-802	803A,B,C



- NOTES:**
- DIMENSIONS IN () ARE IN MILLIMETERS.
 - INSTR. AND LINE NUMBERS SHOWN ARE FOR WCP1. SEE TABLE FOR INSTRUMENT TAG NUMBERS AND PIPING LINE NUMBERS FOR ALL 80K CRYOPUMPS.
 - REDUCER NOT NECESSARY ON 1 1/2" REGEN LINES (SEE TABLE).
 - REQUIRED FOR WCP3 - WCP8, LCP3 & LCP4 ONLY.

L160-D961074-02-V

PROPRIETARY AND CONFIDENTIAL THIS DOCUMENT CONTAINS PROPRIETARY INFORMATION BELONGING TO PROCESS SYSTEMS INTERNATIONAL, INC. OR ITS AFFILIATED COMPANIES AND SHALL BE USED ONLY FOR THE PURPOSE FOR WHICH IT WAS SUPPLIED. IT SHALL NOT BE COPIED, REPRODUCED OR OTHERWISE USED, NOR SHALL SUCH INFORMATION BE FURNISHED IN WHOLE OR IN PART TO OTHERS EXCEPT IN ACCORDANCE WITH THE TERMS OF ANY AGREEMENT UNDER WHICH IT WAS SUPPLIED OR WITH THE PRIOR WRITTEN CONSENT OF PROCESS SYSTEMS INTERNATIONAL, INC. AND SHALL BE RETURNED UPON REQUEST.		UNLESS OTHERWISE SPECIFIED DIMENSIONS ARE IN INCHES TOLERANCES: FRACTIONAL ± ANGULAR ±0°-30' BEND ±2° TWO PLACE DECIMAL ± 0.1 THREE PLACE DECIMAL ± 0.05 FINISHED SURFACE RMS BREAK CORNERS IN REMOVE ALL BURRS		2 REVISED FOR DEWAR PURCHASE 1 ISSUE FOR FDR 0 ISSUE FOR DESIGN 2 REVISED P1 PRELIMINARY DESIGN UPDATE		05.29.96 0188 04.26.96 0134 03.07.96 0083 01.05.96 0032 09.26.95 0003		PROCESS SYSTEMS INTERNATIONAL, INC. 20 WALKUP DR. WESTBOROUGH, MASSACHUSETTS 01581 USA PIPING & INSTRUMENTATION DIAGRAM LIGO VACUUM EQUIPMENT 80K CRYOPUMP	
V049-0-001 P & ID LEGEND DWG. NO. DESCRIPTION DWG. NO. DESCRIPTION		DO NOT SCALE THIS DRAWING USED ON NEXT ASS'Y:		REV DESCRIPTION CHKD DRWN DATE DED#		CAD FILE V0490006 SIZE D DWG. NO. V049-0-006 SCALE NONE SHEET 1 OF 1		REV. 2 Dec 04, 1995 - 105619	