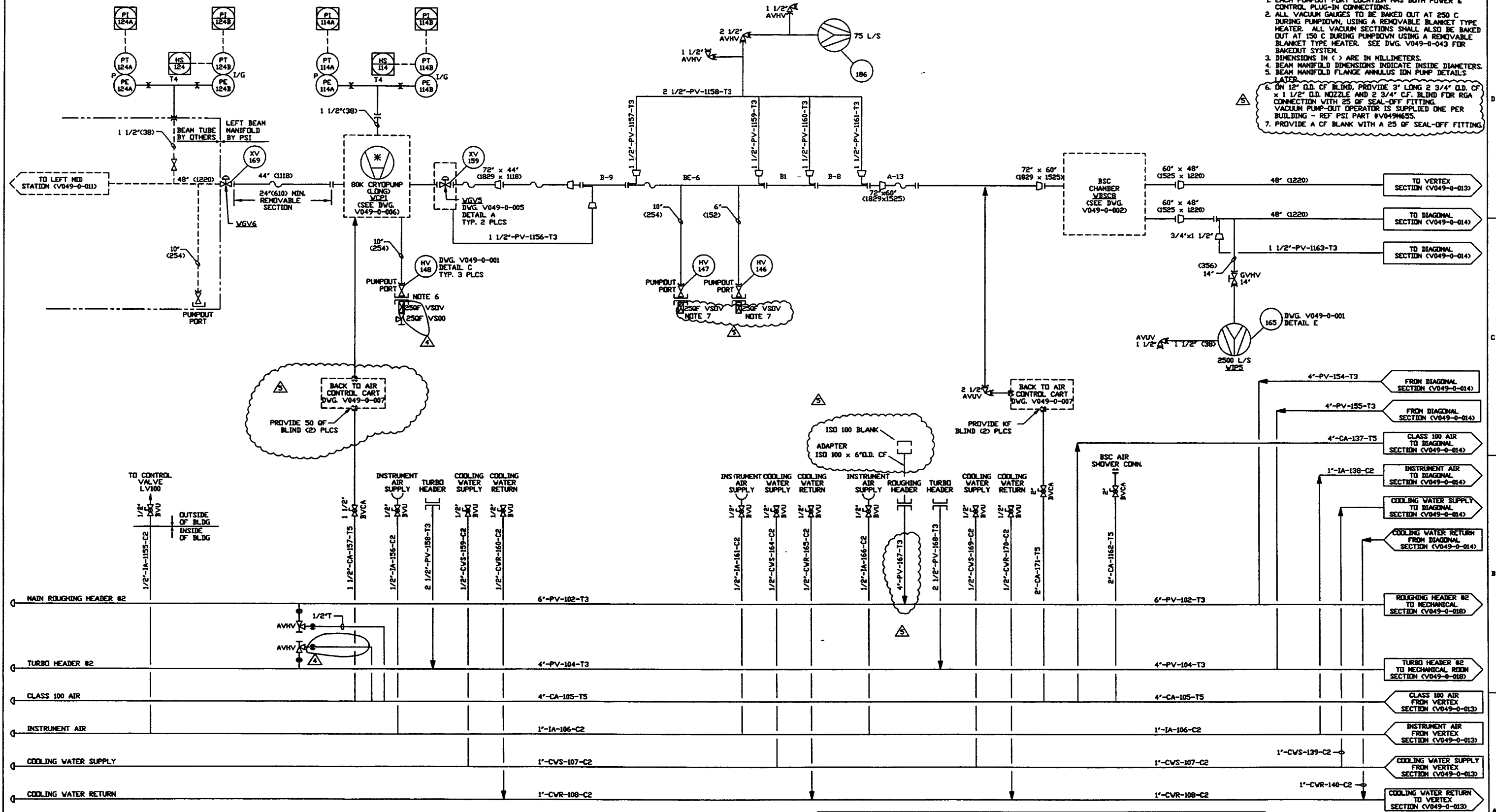


- NOTES:**
1. EACH PUMPOUT PORT LOCATION HAS BOTH POWER & CONTROL PLUG-IN CONNECTIONS.
  2. ALL VACUUM GAUGES TO BE BAKED OUT AT 250 C DURING PUMPDOWN, USING A REMOVABLE BLANKET TYPE HEATER. ALL VACUUM SECTIONS SHALL ALSO BE BAKED OUT AT 150 C DURING PUMPDOWN USING A REMOVABLE BLANKET TYPE HEATER. SEE DWG. V049-0-043 FOR BAKEDOUT SYSTEM.
  3. DIMENSIONS IN ( ) ARE IN MILLIMETERS.
  4. BEAM MANIFOLD DIMENSIONS INDICATE INSIDE DIAMETERS.
  5. BEAM MANIFOLD FLANGE ANNULUS ION PUMP DETAILS LATER.
  6. ON 12" O.D. CF BLIND, PROVIDE 3" LONG 2 3/4" O.D. CF x 1 1/2" I.D. NOZZLE AND 2 3/4" CF BLIND FOR RGA CONNECTION WITH 25 OF SEAL-OFF FITTING. VACUUM PUMPOUT OPERATOR IS SUPPLIED ONE PER BUILDING - REF PSI PART #V049M655.
  7. PROVIDE A CF BLANK WITH A 25 OF SEAL-OFF FITTING.



DWG. NO.	DESCRIPTION	DWG. NO.	DESCRIPTION				
V049-0-014	P & ID DIAGONAL SECTION						
V049-0-013	P & ID VERTEX SECTION						
V049-0-011	P & ID LEFT MID STATION						
V049-0-006	P & ID 80K CRYOPUMP						
V049-0-002	P & ID BEAM SPLITTER CHAMBER						
V049-0-001	P & ID LEGEND						
REV	DESCRIPTION	DATE	BY	CHKD	DRWN	DATE	DESN
5	REISSUED FOR FDR UPDATE	6/11/97	DA				0499
4	REVISED	02.14.97	SH	DHV	RJV		0435
3	REVISED	01.03.97	SH	DHV	RJV		0394
2	ISSUE FOR FDR UPDATE	10.25.96	TS	RT	SH	DHV	0309
1	ISSUE FOR FDR	04.26.96	REB	TS	RT	SH	0134
0	ISSUE FOR DESIGN	01.03.96	REB	TS	RT	SH	0031
P1	PRELIMINARY DESIGN UPDATE	09.26.95				AFG	0003
USED ON:	REV	DESCRIPTION	CHKD	DRWN	DATE		
NEXT ASSY:							