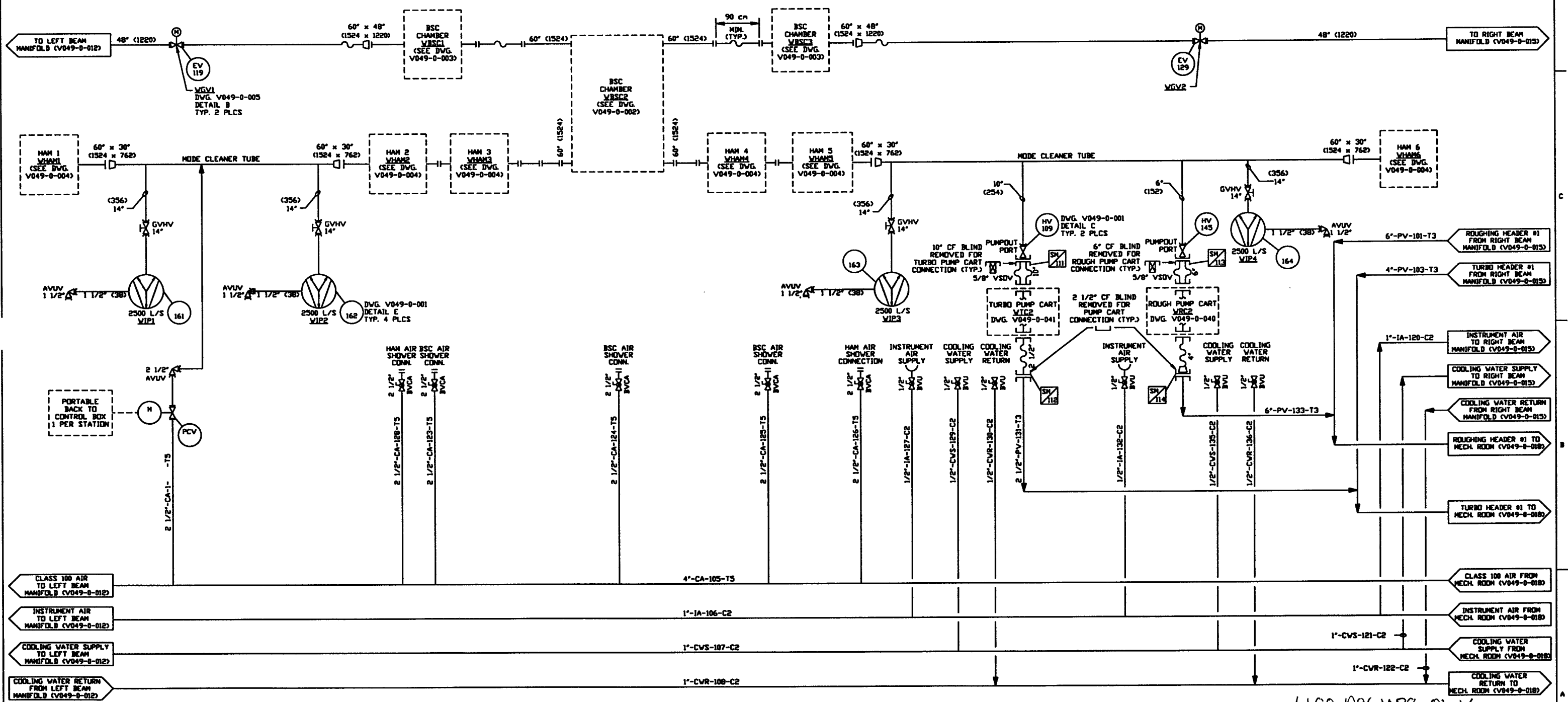


NOTES:

1. EACH PUMPOUT PORT LOCATION HAS BOTH POWER & CONTROL PLUG-IN CONNECTIONS.
2. ALL VACUUM GAUGES TO BE BAKED OUT AT 250 C DURING PUMPDOWN USING A REMOVABLE BLANKET TYPE HEATER. ALL VACUUM SECTIONS SHALL ALSO BE BAKED OUT AT 150 C DURING PUMPDOWN USING A REMOVABLE BLANKET TYPE HEATER. SEE DWG. V049-0-043 FOR BAKEDOUT SYSTEM.
3. DIMENSIONS IN () ARE IN MILLIMETERS.
4. BEAM MANIFOLD DIMENSIONS INDICATE INSIDE DIAMETERS.
5. BEAM MANIFOLD FLANGE ANNULUS IDN PUMP DETAILS LATER.



LIGO D961078-01-V

PROCESS SYSTEMS INTERNATIONAL, INC.
 20 WILSON DR. WESTBOROUGH, MASSACHUSETTS 01581 USA

PIPING & INSTRUMENTATION DIAGRAM
LIGO VACUUM EQUIPMENT
WASHINGTON SITE
VERTEX SECTION

CAD FILE: V0490013
 SHEET: D
 DWG. NO.: V049-0-013
 REV: 1

SCALE: NONE
 SHEET: 1 OF 1