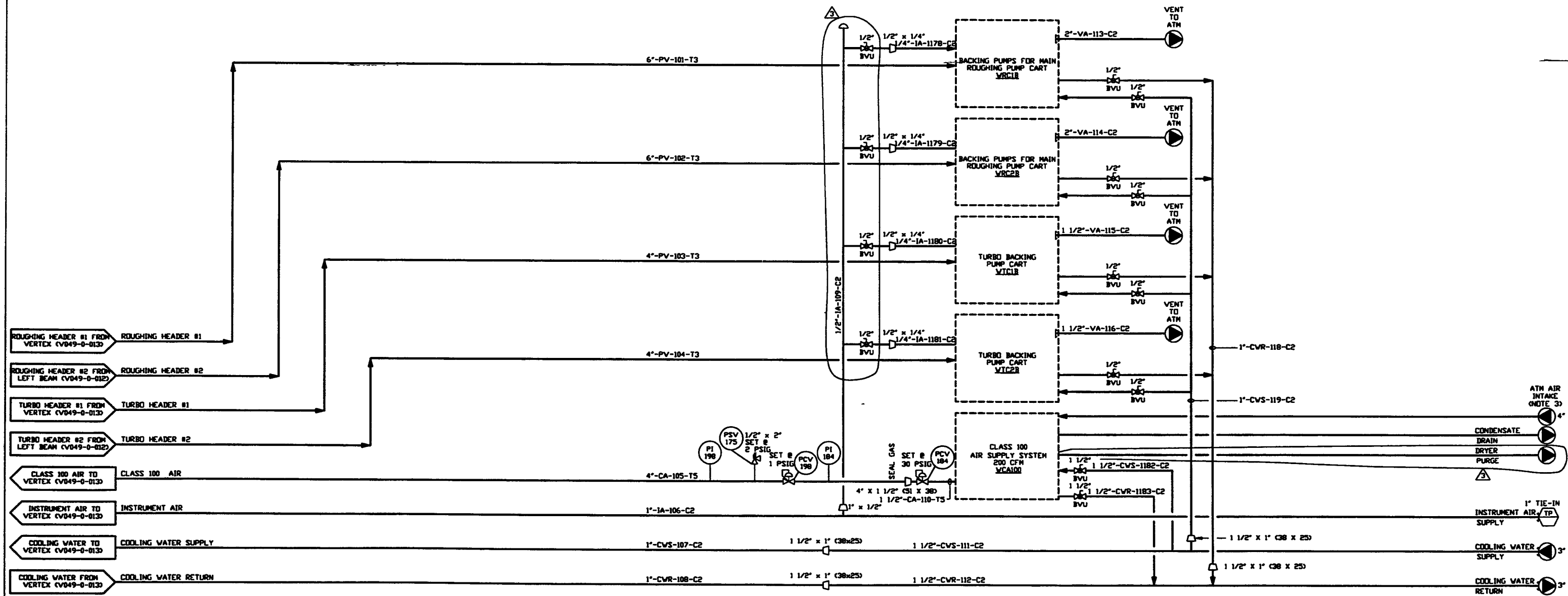


- NOTES:**
1. DIMENSIONS IN ( ) ARE IN MILLIMETERS.
  2. BEAM MANIFOLD DIMENSIONS INDICATE INSIDE DIAMETERS.
  3. ATMOSPHERIC AIR INTAKE SHALL BE LOCATED AWAY FROM SOURCES OF CONTAMINATION.



**PROPRIETARY AND CONFIDENTIAL**  
 THIS DOCUMENT CONTAINS PROPRIETARY INFORMATION BELONGING TO PROCESS SYSTEMS INTERNATIONAL, INC. OR ITS AFFILIATED COMPANIES AND SHALL BE USED ONLY FOR THE PURPOSE FOR WHICH IT WAS SUPPLIED. IT SHALL NOT BE COPIED, REPRODUCED OR OTHERWISE USED, NOR SHALL SUCH INFORMATION BE FURNISHED IN WHOLE OR IN PART TO OTHERS EXCEPT IN ACCORDANCE WITH THE TERMS OF ANY AGREEMENT UNDER WHICH IT WAS SUPPLIED OR WITH THE WRITTEN CONSENT OF PROCESS SYSTEMS INTERNATIONAL, INC. AND SHALL BE RETURNED UPON REQUEST.

REV	DATE	DESCRIPTION
3	01.02.97	REVISED
2	04.25.96	ISSUED FOR FOR UPDATE
1	04.26.96	ISSUED FOR FOR
0	01.03.96	ISSUE FOR DESIGN

REV	DATE	DESCRIPTION	CHKD	DRWN	DATE	BCDR
3	01.02.97	REVISED	SH	DNCV	R/J	0394
2	04.25.96	ISSUED FOR FOR UPDATE	SH	DNCV	R/J	0309
1	04.26.96	ISSUED FOR FOR	SH	DNCV	R/J	0134
0	01.03.96	ISSUE FOR DESIGN	SH	DNCV	R/J	0031

**PROCESS SYSTEMS INTERNATIONAL, INC.**  
 20 WALRUP DR. WESTBOROUGH, MASSACHUSETTS 01581 USA

**PIPING & INSTRUMENTATION DIAGRAM**  
**LIGO VACUUM EQUIPMENT**  
**WASHINGTON SITE**  
**CORNER STATION MECHANICAL ROOM**

CAD FILE: V0490018  
 SIZE: D  
 DWG. NO.: V049-0-018  
 REV: 3

SCALE: NONE SHEET: 1 OF 1