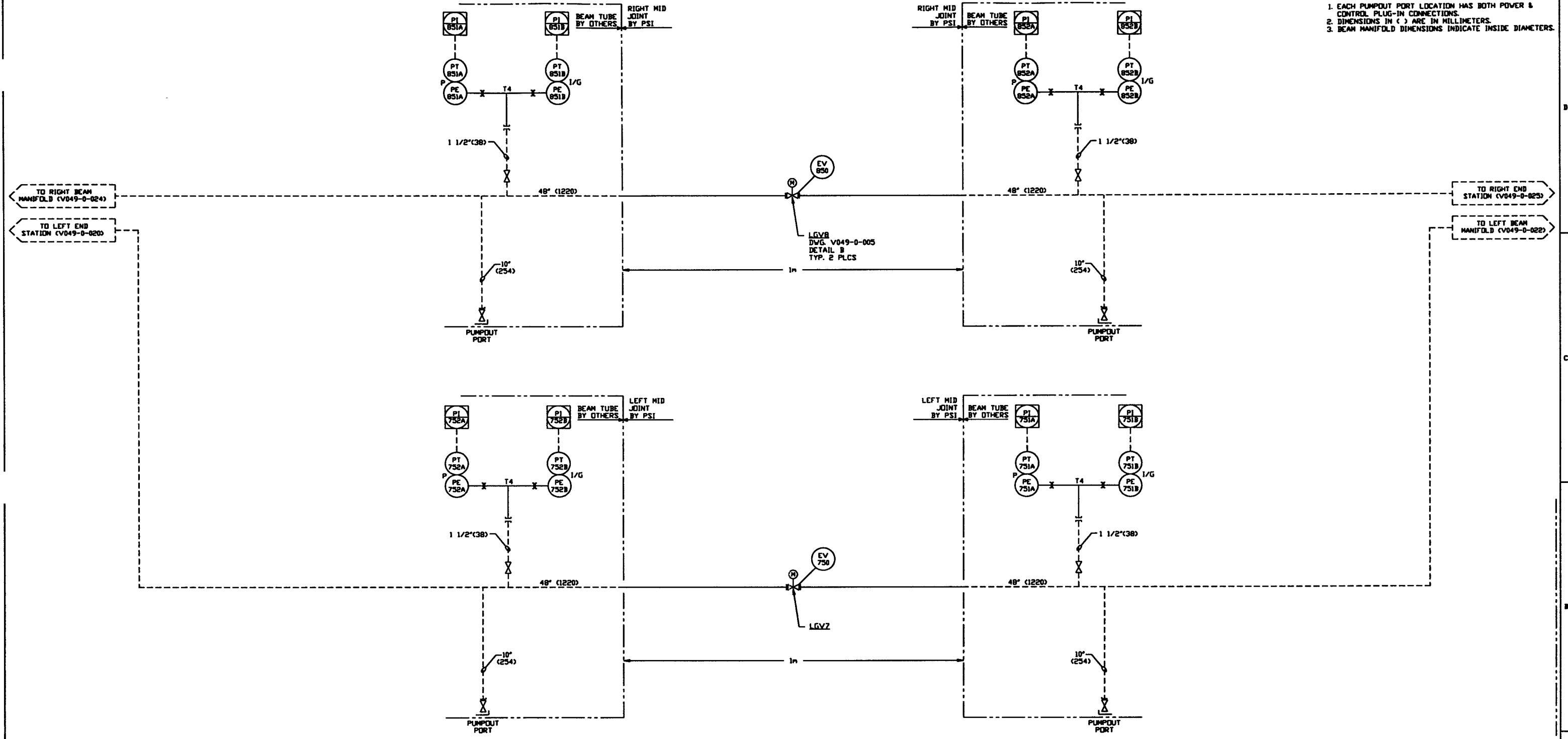


- NOTES:**
1. EACH PUMP/OUT PORT LOCATION HAS BOTH POWER & CONTROL PLUG-IN CONNECTIONS.
 2. DIMENSIONS IN () ARE IN MILLIMETERS.
 3. BEAM MANIFOLD DIMENSIONS INDICATE INSIDE DIAMETERS.



PROPRIETARY AND CONFIDENTIAL	
V049-0-025	P & ID RIGHT END STATION
V049-0-024	P & ID RIGHT BEAM MANIFOLD
V049-0-022	P & ID LEFT BEAM MANIFOLD
V049-0-020	P & ID LEFT END STATION
V049-0-001	P & ID LEGEND
DWG. NO.	DESCRIPTION
DWG. NO.	DESCRIPTION
REFERENCE DRAWINGS	

EQUIP. THIS DWG.		UNLESS OTHERWISE SPECIFIED DIMENSIONS ARE IN INCHES	
LGV7		TOLERANCES:	
LGV8		FRACTIONAL: ±	
		DECIMAL: ±	
		THREE PLACE DECIMAL: ±	
		FINISHED SURFACE AND BEAM CONDUIT BY REMOVE ALL DIMS	
		DO NOT SCALE THIS DRAWING	
USED ON:		REV	
NEXT ASS'Y:		ISSUE DESCRIPTION	

LIGO D961087-01-V

PROCESS SYSTEMS INTERNATIONAL INC.
20 WALKUP DR. WESTBOROUGH, MASSACHUSETTS 01581 USA

PIPING & INSTRUMENTATION DIAGRAM
LIGO VACUUM EQUIPMENT
LOUISIANA SITE
LEFT & RIGHT MID JOINTS

CAD FILE	SIZE	DWG. NO.	REV.
V0490021	D	V049-0-021	1

SCALE: NONE SHEET: 1 OF 1