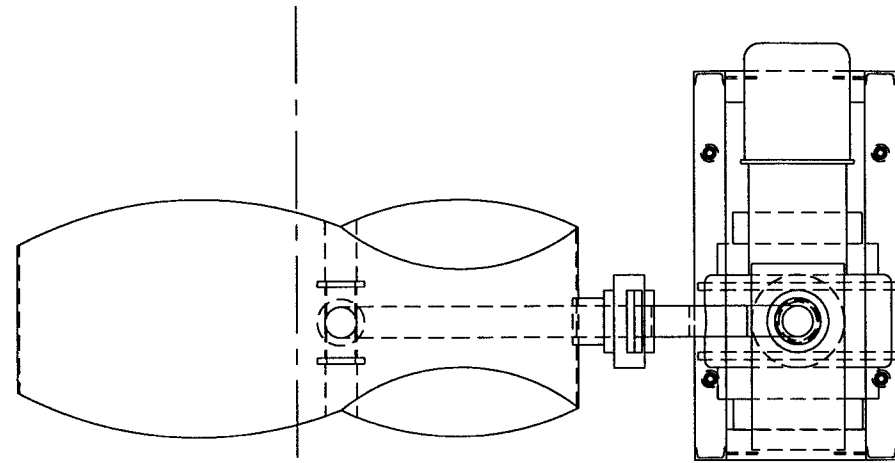
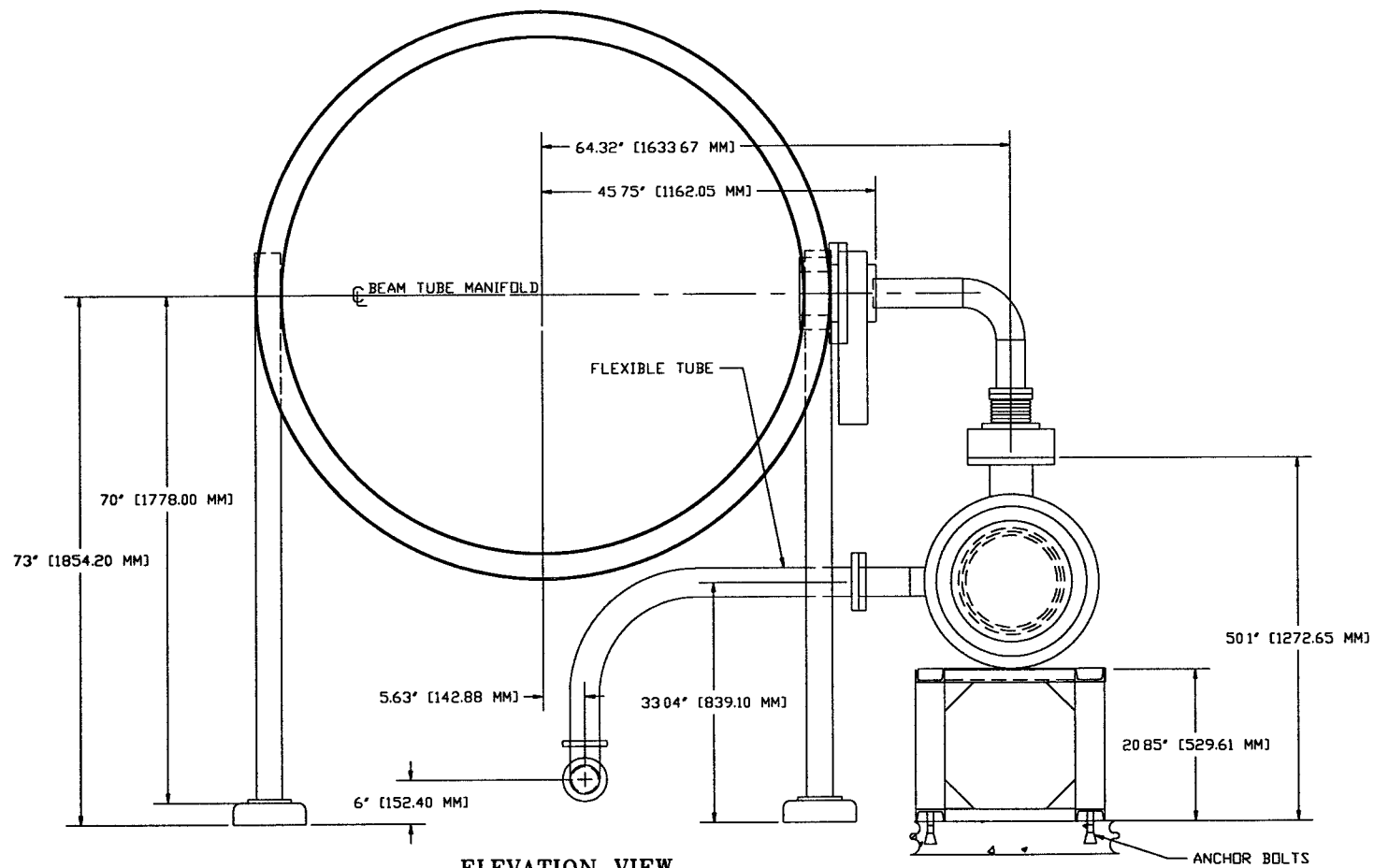


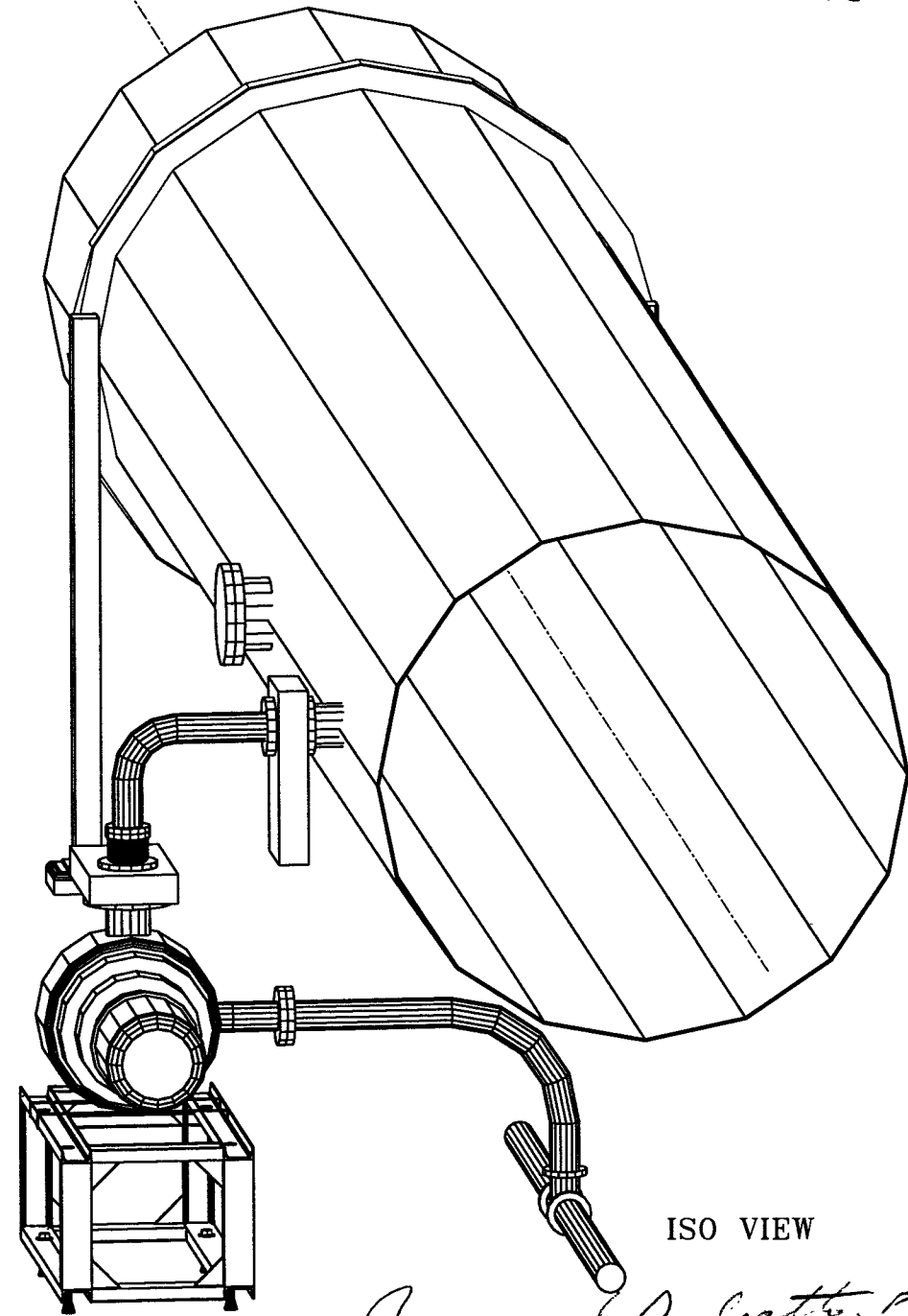
**NOT FOR  
CONSTRUCTION**



PLAN VIEW



ELEVATION VIEW



ISO VIEW

*Raymond D. Catto, PE*  
5/6/96 LUGO P961097-00-V

PROPRIETARY INFORMATION THIS DOCUMENT IS THE PROPERTY OF PROCESS SYSTEMS INTERNATIONAL, INC. OR ITS AFFILIATED COMPANIES AND SHALL BE USED ONLY FOR THE PURPOSE FOR WHICH IT WAS SUPPLIED. IT SHALL NOT BE COPIED, REPRODUCED OR OTHERWISE USED, NOR SHALL SUCH INFORMATION BE FURNISHED IN WHOLE OR IN PART TO OTHERS EXCEPT IN ACCORDANCE WITH THE TERMS OF ANY AGREEMENT UNDER WHICH IT WAS SUPPLIED OR WITH THE PRIOR WRITTEN CONSENT OF PROCESS SYSTEMS INTERNATIONAL, INC. AND SHALL BE RETURNED UPON REQUEST.		UNLESS OTHERWISE SPECIFIED DIMENSIONS ARE IN INCHES TOLERANCES: FRACTIONAL: ANGULAR: ±0.01° BEND ±2° TWO PLACE DECIMAL: ±.01 THREE PLACE DECIMAL: ±.005 FINISHED SURFACE RNS BREAK CORNERS IN OUT REMOVE ALL BURRS		DO NOT SCALE THIS DRAWING USED ON: NEXT ASS'Y:		0 ISSUED FOR FDR REV DESCRIPTION ISSUE DESCRIPTION		CHKD DRWN DATE DECN TDV 4/26/96 0150 SCALE NONE		PROCESS SYSTEMS INTERNATIONAL, INC. 20 WALKUP DR., WESTBOROUGH, MASSACHUSETTS 01581 USA ROUGHING PUMP CART ARRANGEMENT ASSEMBLY LIQD VACUUM EQUIPMENT		CAR FILE V0494010 SIZE D DWG. NO. V049-4-010 SHEET 1 OF 1		REV 0	
DWG. NO.	DESCRIPTION	DWG. NO.	DESCRIPTION	7	6	5	4	3	2	1					
REFERENCE DRAWINGS															

Dwg 07/1994 - 115227