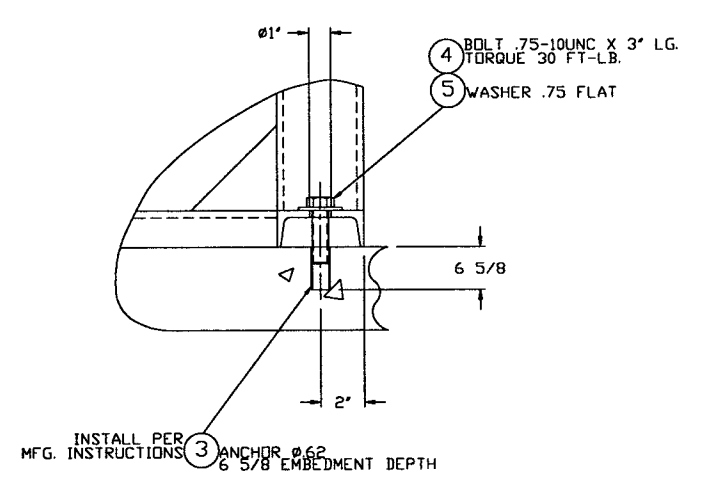
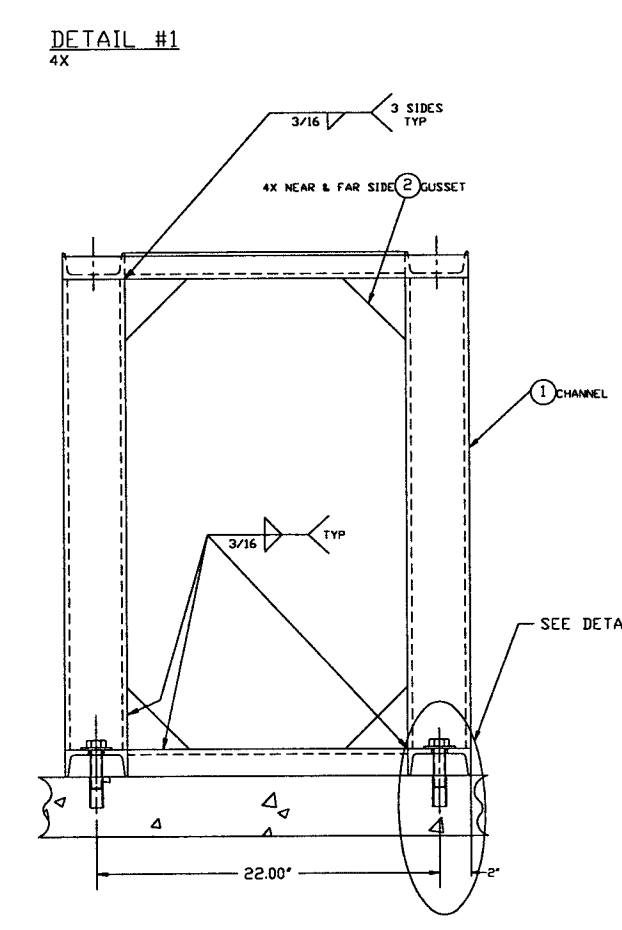
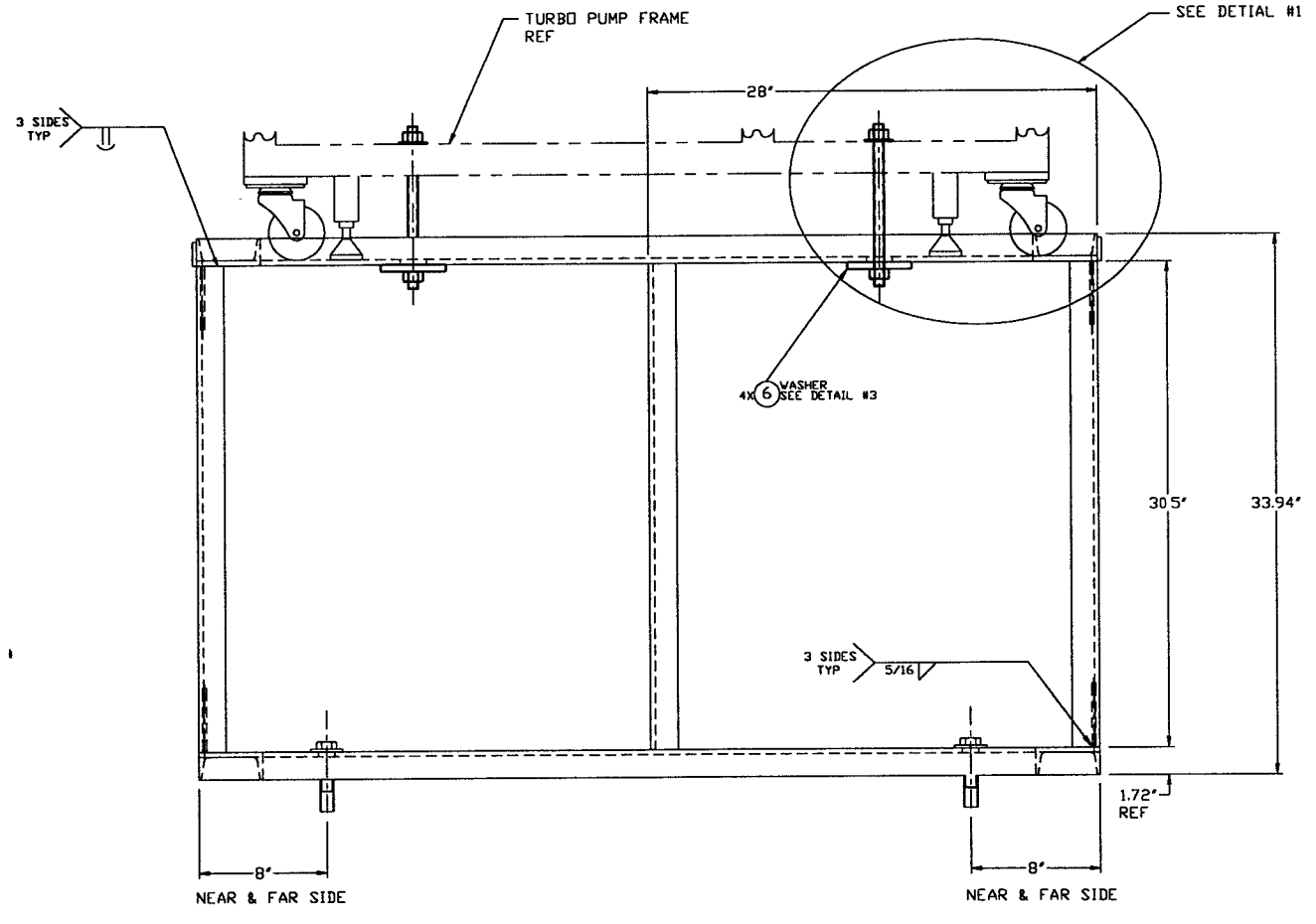
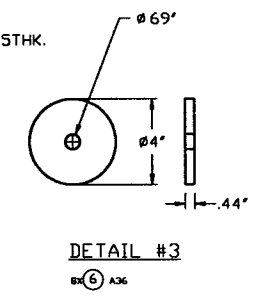
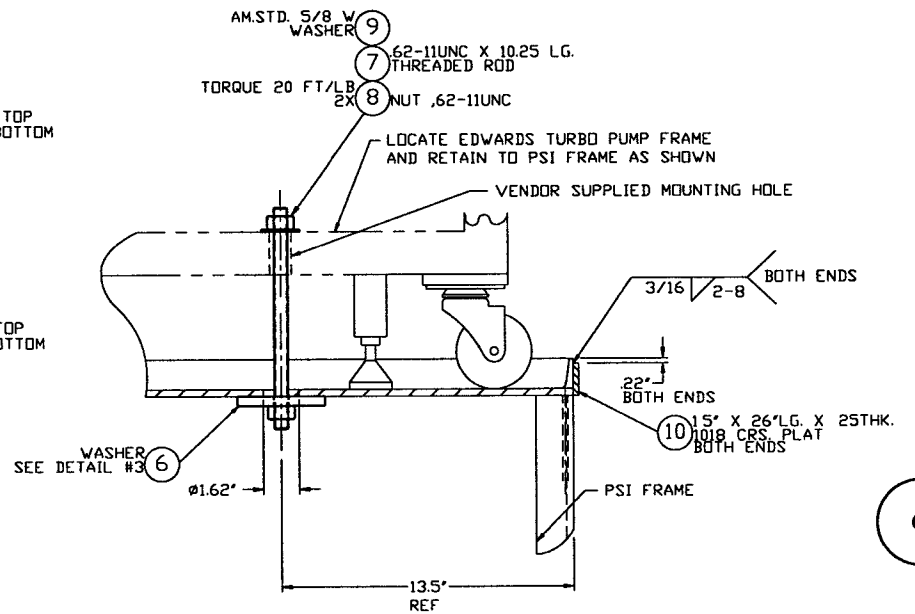
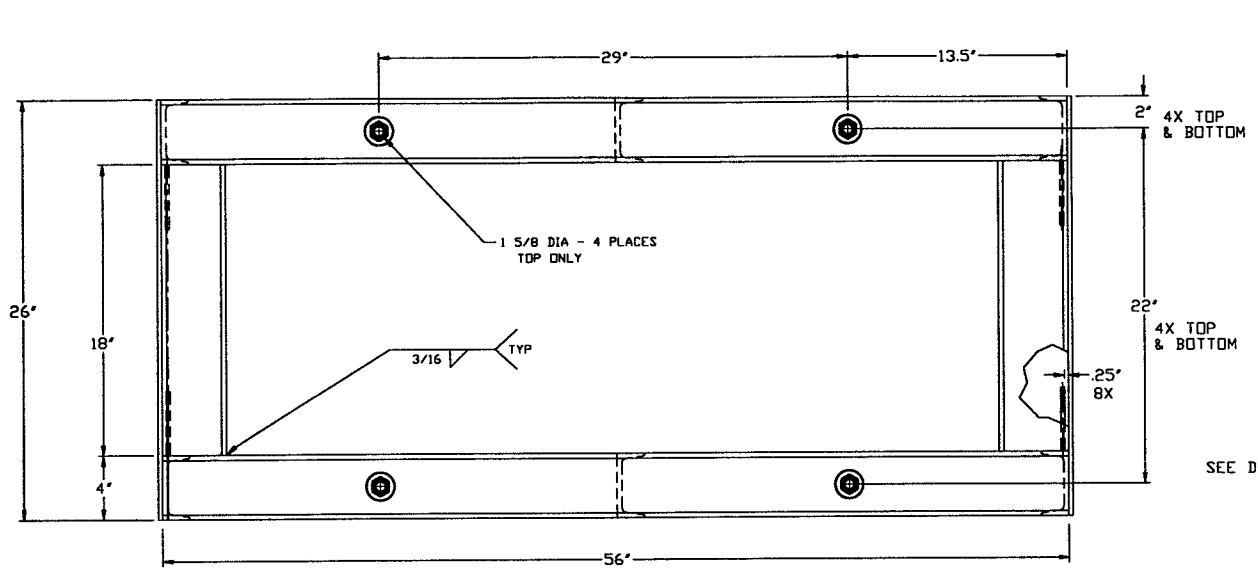


ITEM	PART NO.	SUFFIX	QTY	UN	DESCRIPTION
1			2	EA	CHANNEL, C4x7.5#/FT.x20 FT.
2			2	EA	PLATE, 1/4"x4"x8"
3		3	4		CONCRETE ANCHOR, HILTI HFA 3/4 X 6 5/8 EMBEDMENT DP.
4			4	EA	BOLT, HEX HD, 3/4"-10 x 3" LG
5			4	EA	WASHER, AM. STD. 3/4"W (WIDE)
6	DETAIL#3		3	4	WASHER, FLAT .68"ID. X 4"OD X .44 TK. A36
7			3	4	TREADED ROD, .62-11UNC X 11" LG. A36
8			3	8	NUT, HEX .62-11UNC A563 GRADE -A-
9			3	4	WASHER, 5/8 W / AM. STD. (WIDE)
10			3	2	PLAT, STOP 15" X 26" X .25 THK.



NOT FOR CONSTRUCTION
Raymond S. Gatto, PE
 5/6/96 Ligo 0961099-00-V

PROPRIETARY THIS DOCUMENT IS THE PROPERTY OF PROCESS SYSTEMS INTERNATIONAL, INC. OR ITS AFFILIATED COMPANIES AND SHALL BE USED ONLY FOR THE PURPOSE FOR WHICH IT WAS SUPPLIED. IT SHALL NOT BE COPIED, REPRODUCED OR OTHERWISE USED, NOR SHALL SUCH INFORMATION BE FURNISHED IN WHOLE OR IN PART TO OTHERS EXCEPT IN ACCORDANCE WITH THE TERMS OF ANY AGREEMENT UNDER WHICH IT WAS SUPPLIED OR WITH THE PRIOR WRITTEN CONSENT OF PROCESS SYSTEMS INTERNATIONAL, INC. AND SHALL BE RETURNED UPON REQUEST.		UNLESS OTHERWISE SPECIFIED DIMENSIONS ARE IN INCHES TOLERANCES: FRACTIONAL ± .1 ANGULAR ± .5° TWO PLACE DECIMAL ± .01 THREE PLACE DECIMAL ± .005 FINISHED SURFACE RMS BREAK CORNERS IN REMOVE ALL BURRS		DO NOT SCALE THIS DRAWING USED ON: _____ NEXT ASS'Y: _____		0 ISSUED FOR FDR REV: _____ DESCRIPTION: _____ ISSUE DESCRIPTION: _____		PROCESS SYSTEMS INTERNATIONAL, INC. 20 WALKUP DR., WESTBOROUGH, MASSACHUSETTS 01581 USA MAIN TURBO PUMP CART FRAME EXTENSION LIGO VACUUM EQUIPMENT		CAB FILE: V0494012 SIZE: D DWG NO: V049-4-012 REV: 0 SCALE: NONE SHEET: 1 OF 1	
---	--	--	--	--	--	--	--	--	--	---	--

APR 29 1996 13 4918