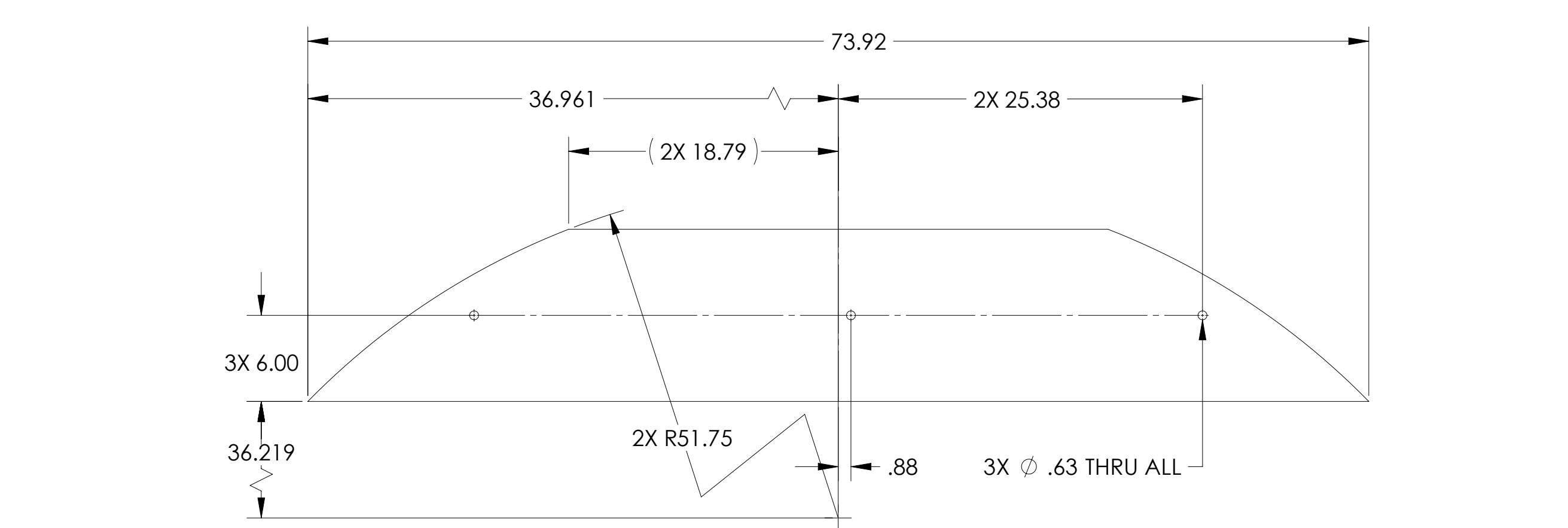
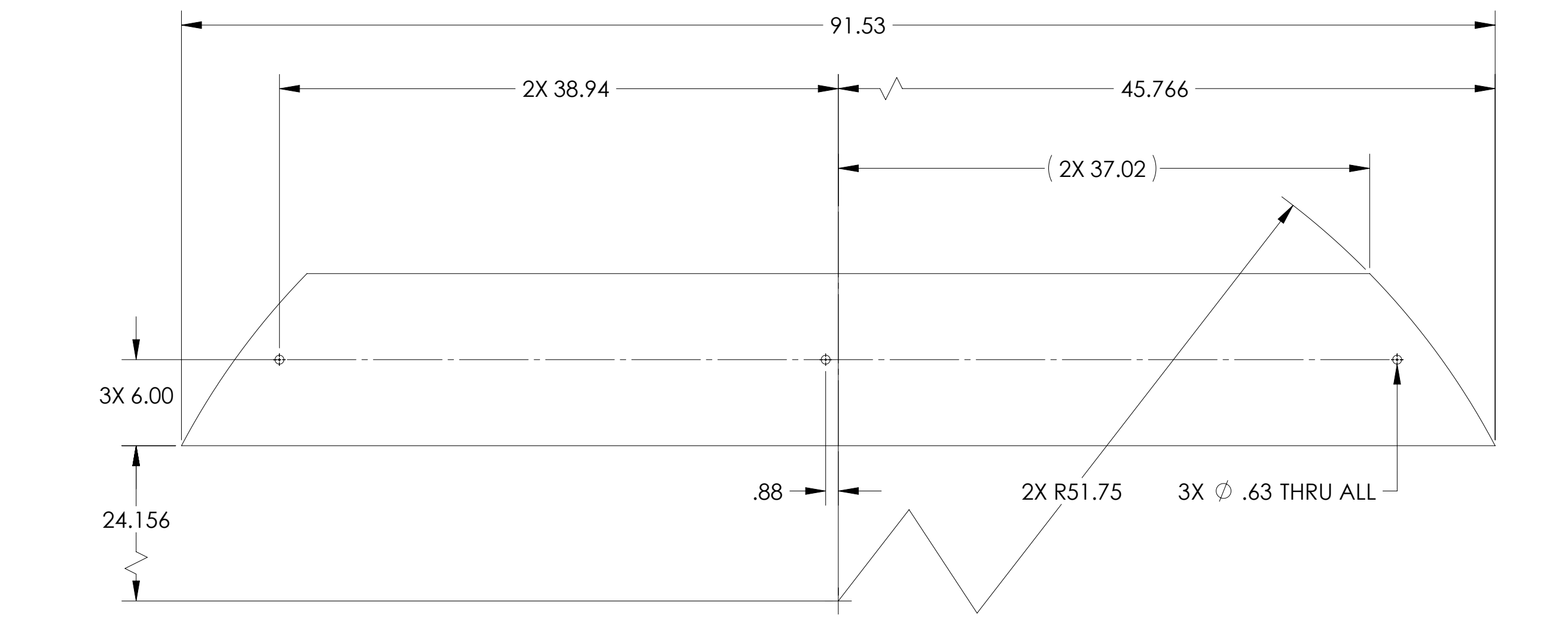


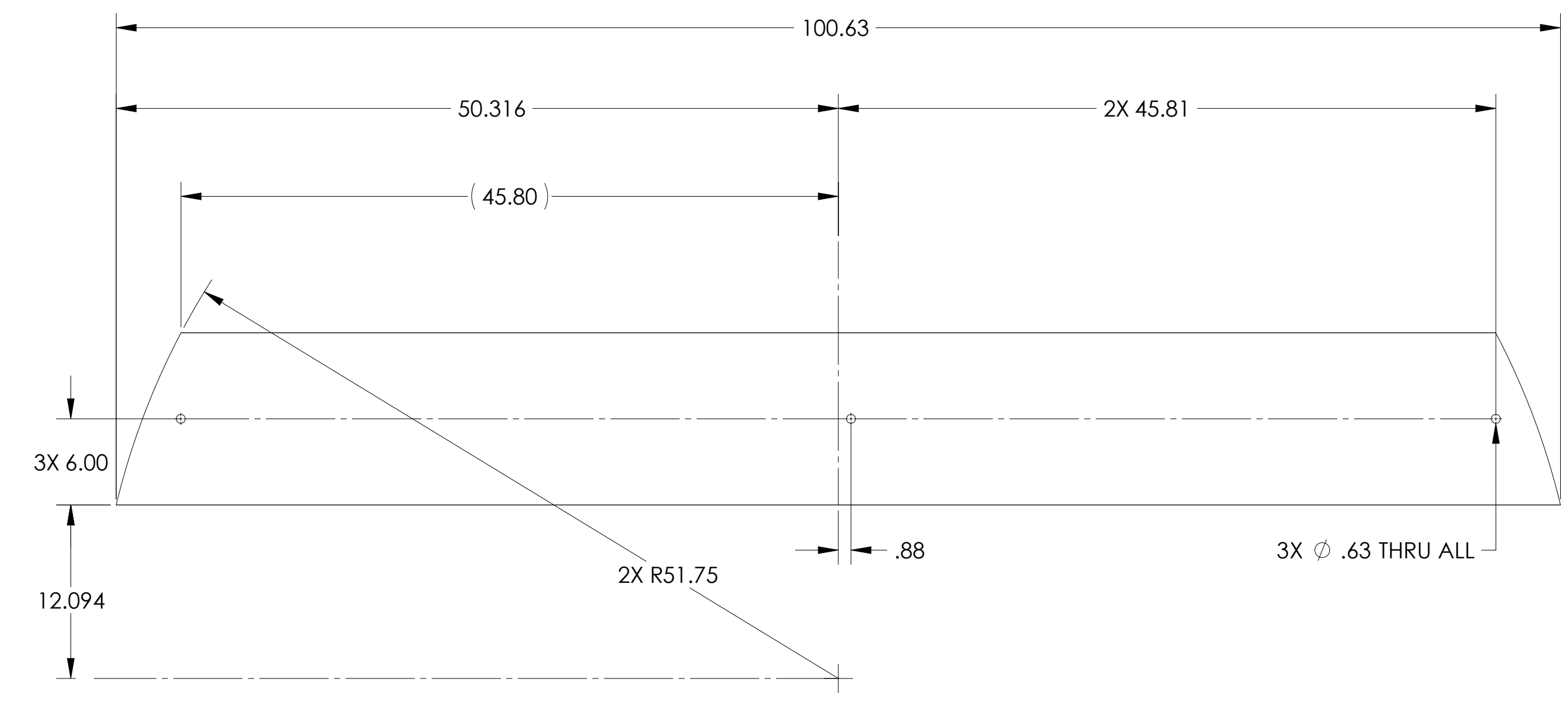
REV.	DATE	DCN #	DRAWING TREE #
v3	03 JUNE 2011	E1100505-x0	-
-	-	-	-
-	-	-	-



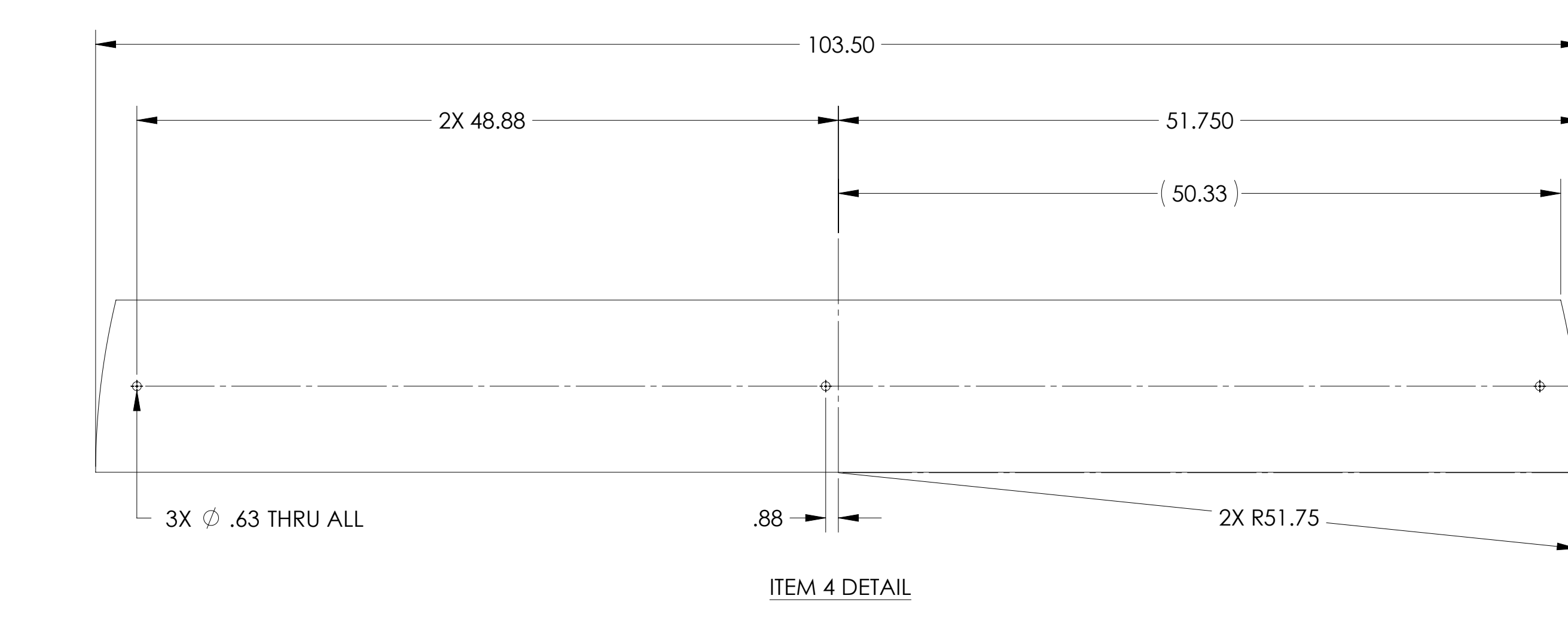
ITEM 1 DETAIL



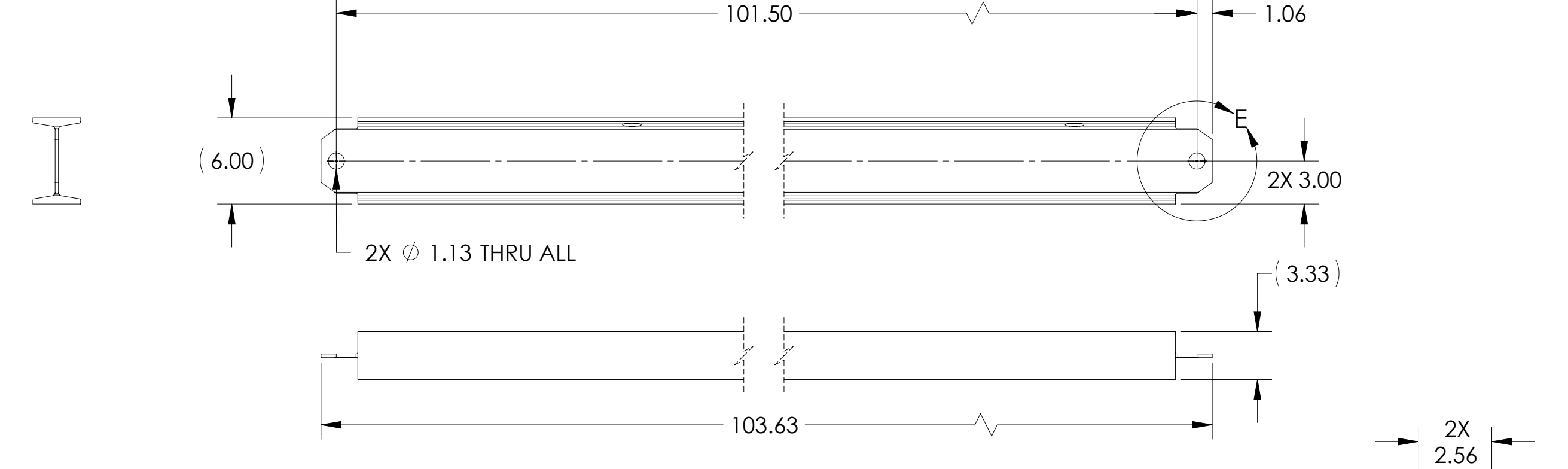
ITEM 2 DETAIL



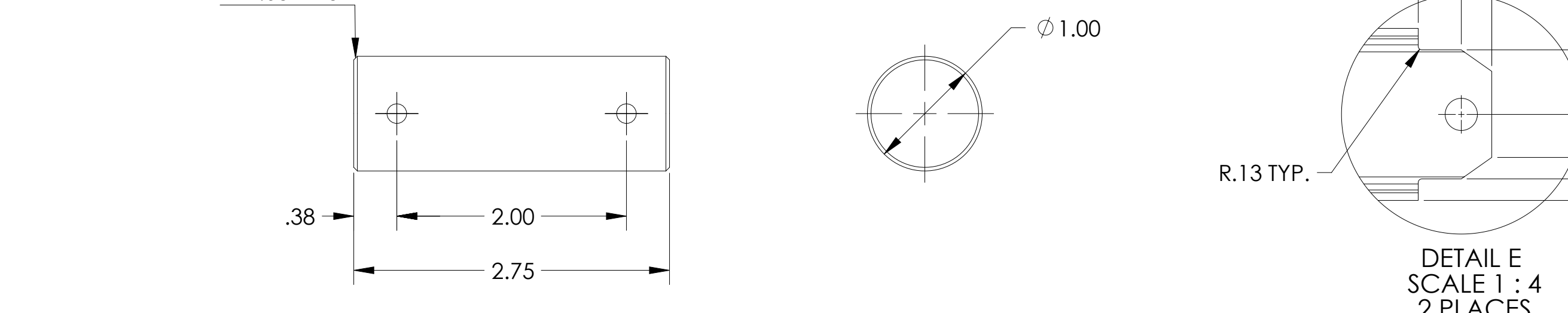
ITEM 3 DETAIL



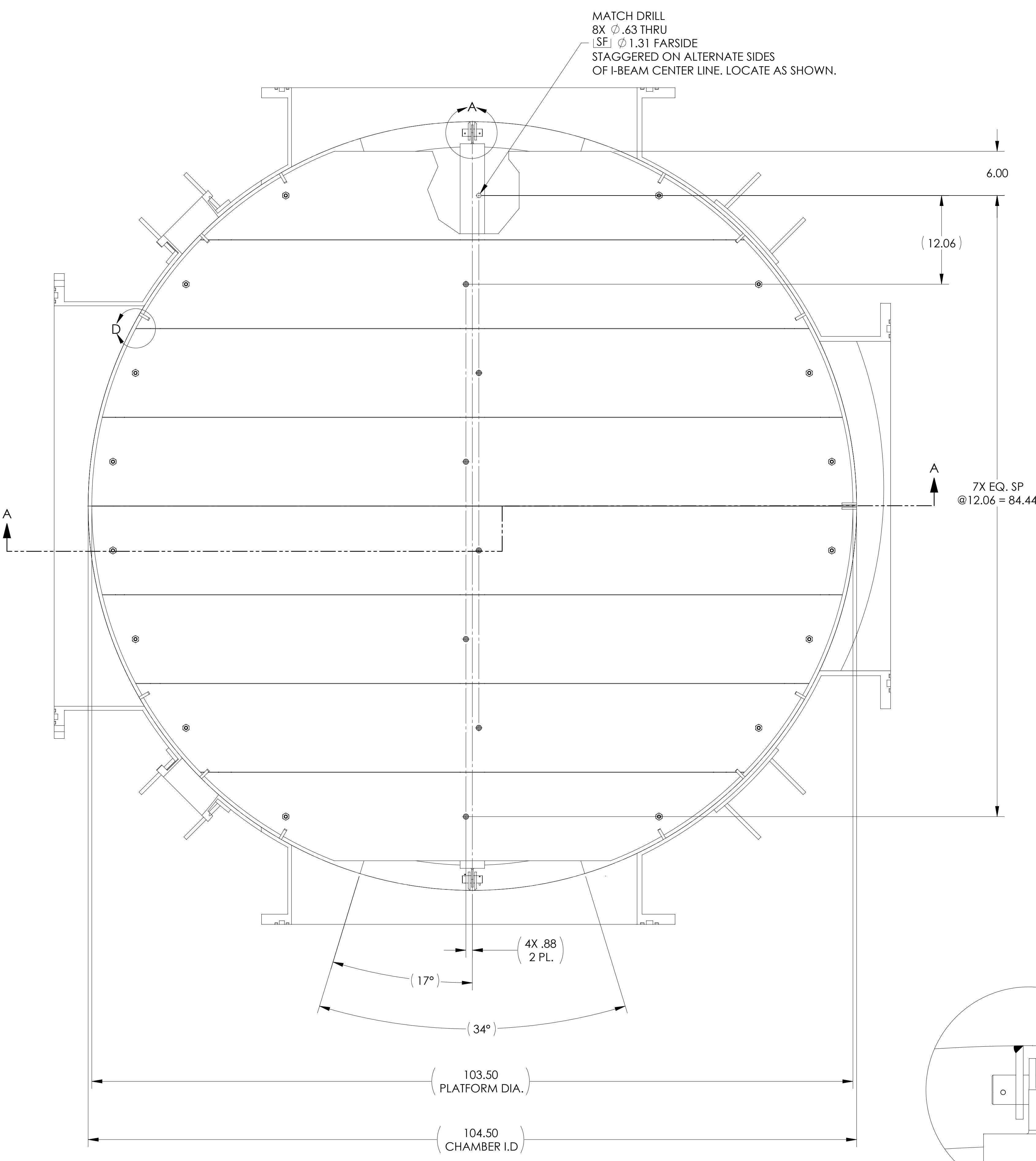
ITEM 4 DETAIL



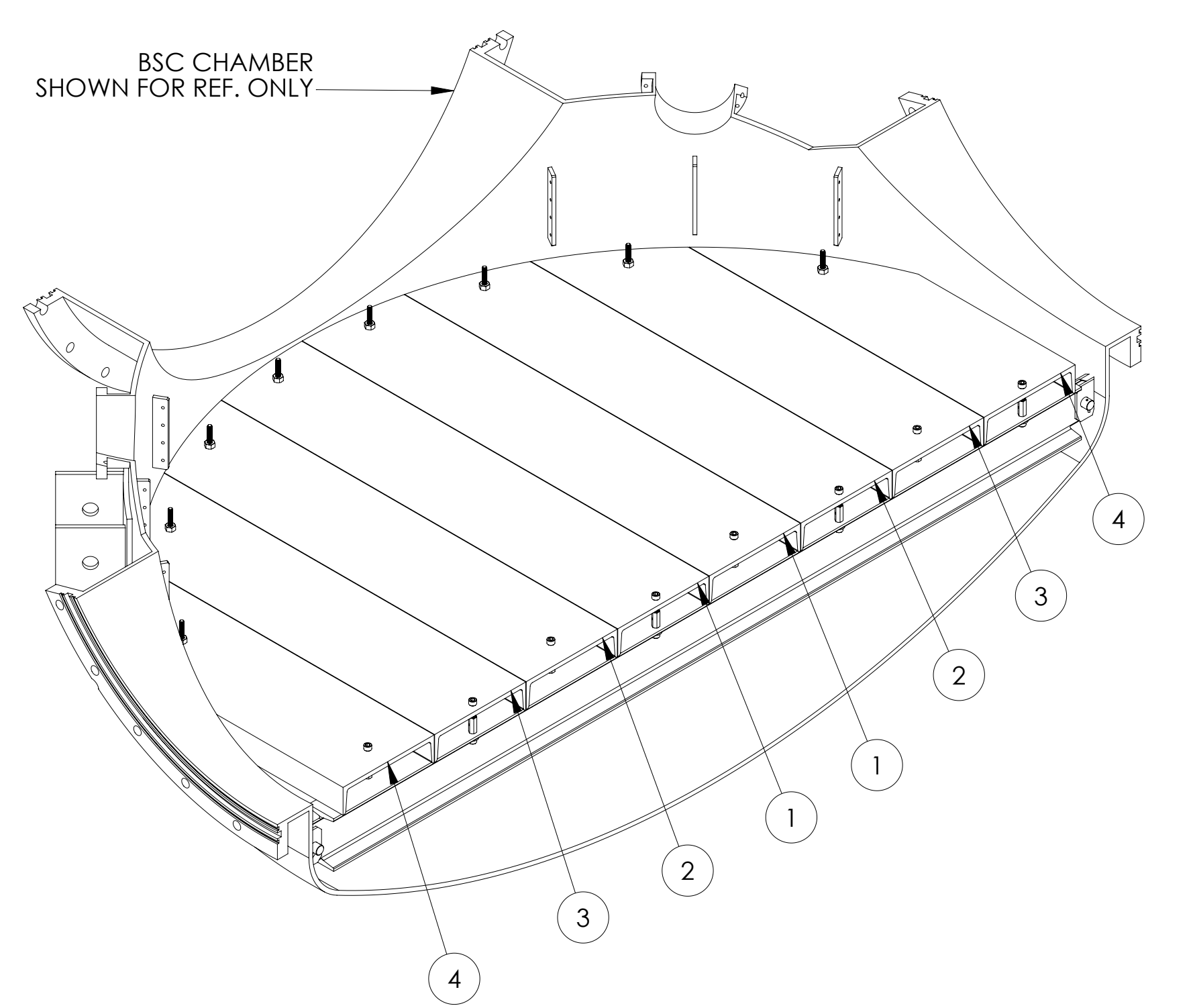
ITEM 5 DETAIL



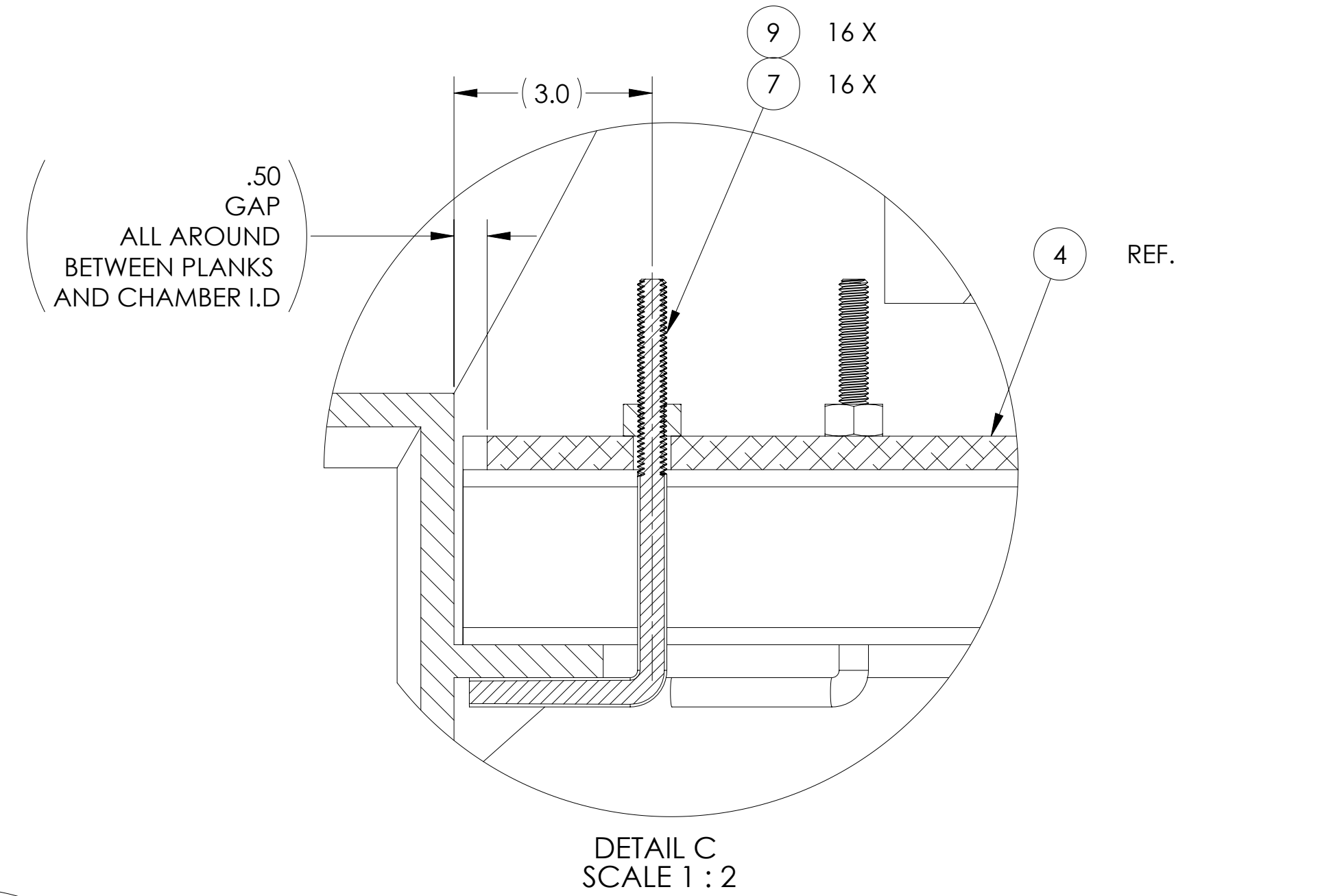
ITEM 6 DETAIL SCALE 1 : 1



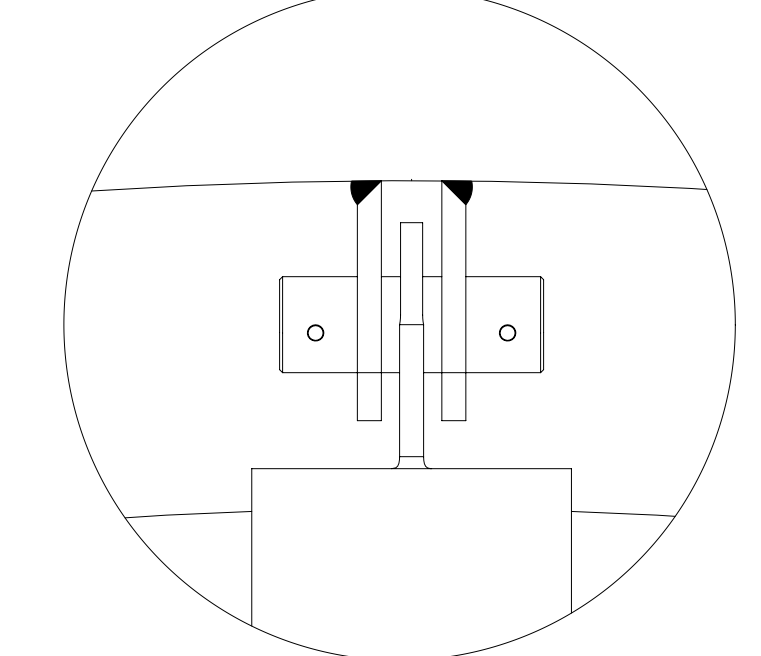
MATCH DRILL  
8X .63 THRU  
(SE) .63 THRU  
STAGGERED ON ALTERNATE SIDES  
OF I-BEAM CENTER LINE. LOCATE AS SHOWN.



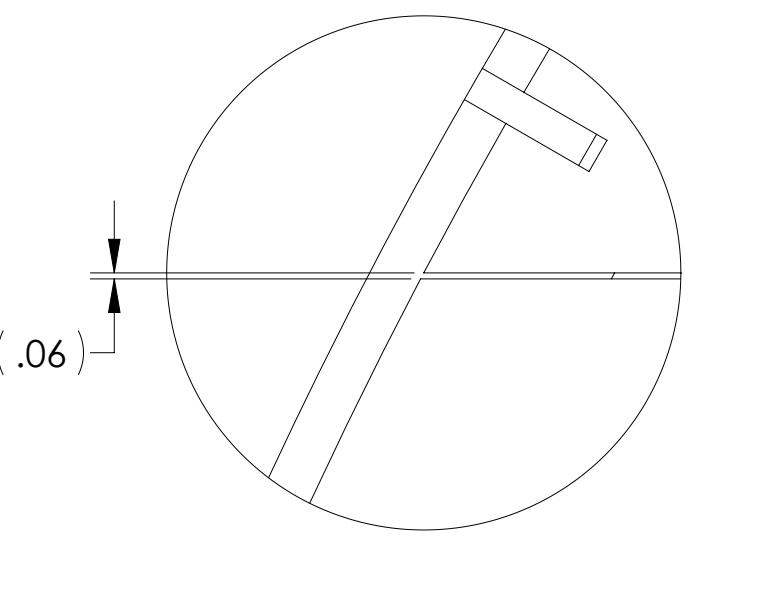
ISO-BREAK OUT SECTION  
SEE DETAIL 'B'  
FOR FLOOR PLANK / I-BEAM ATTACHMENT DETAIL



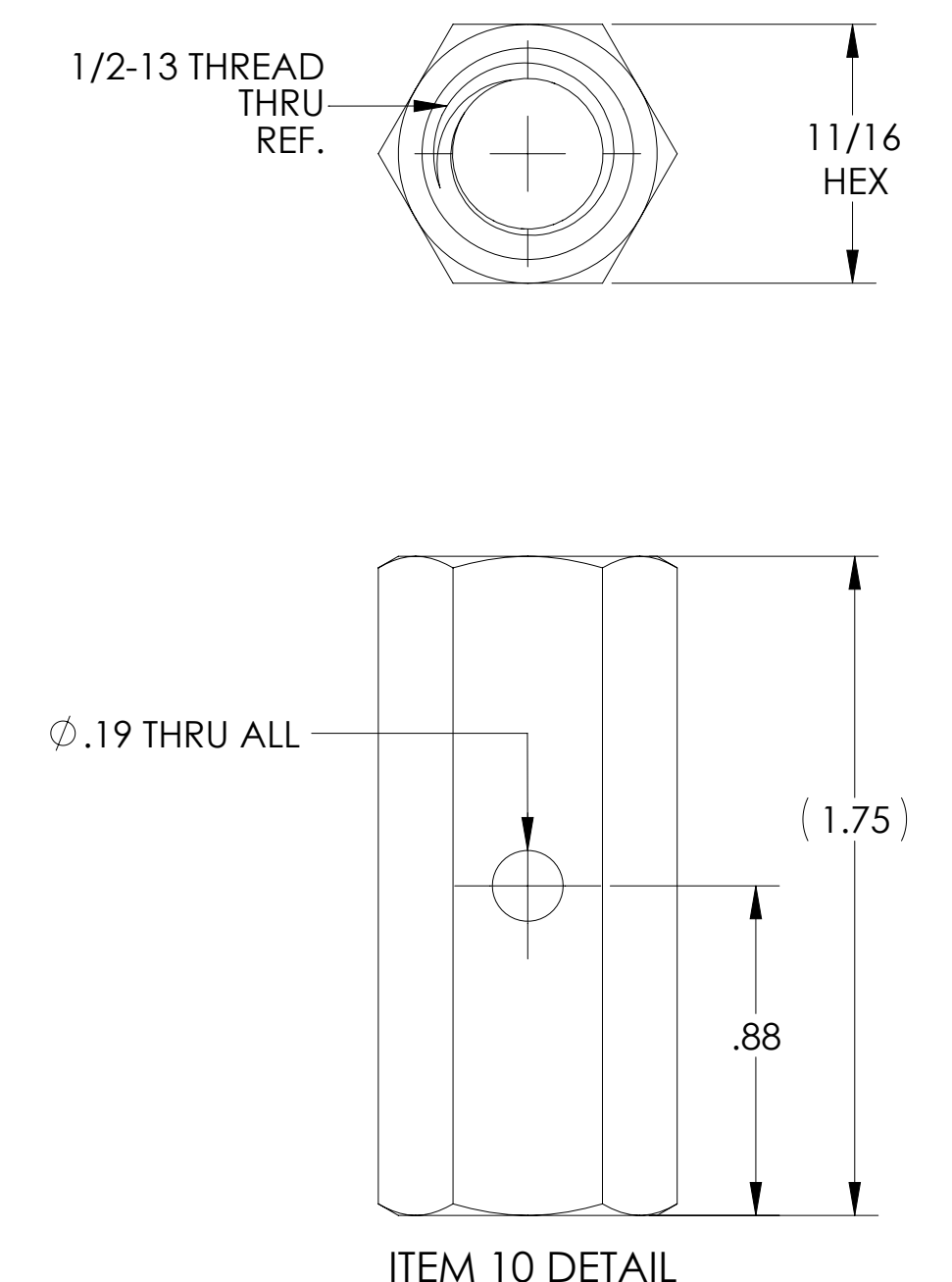
DETAIL C  
SCALE 1 : 2



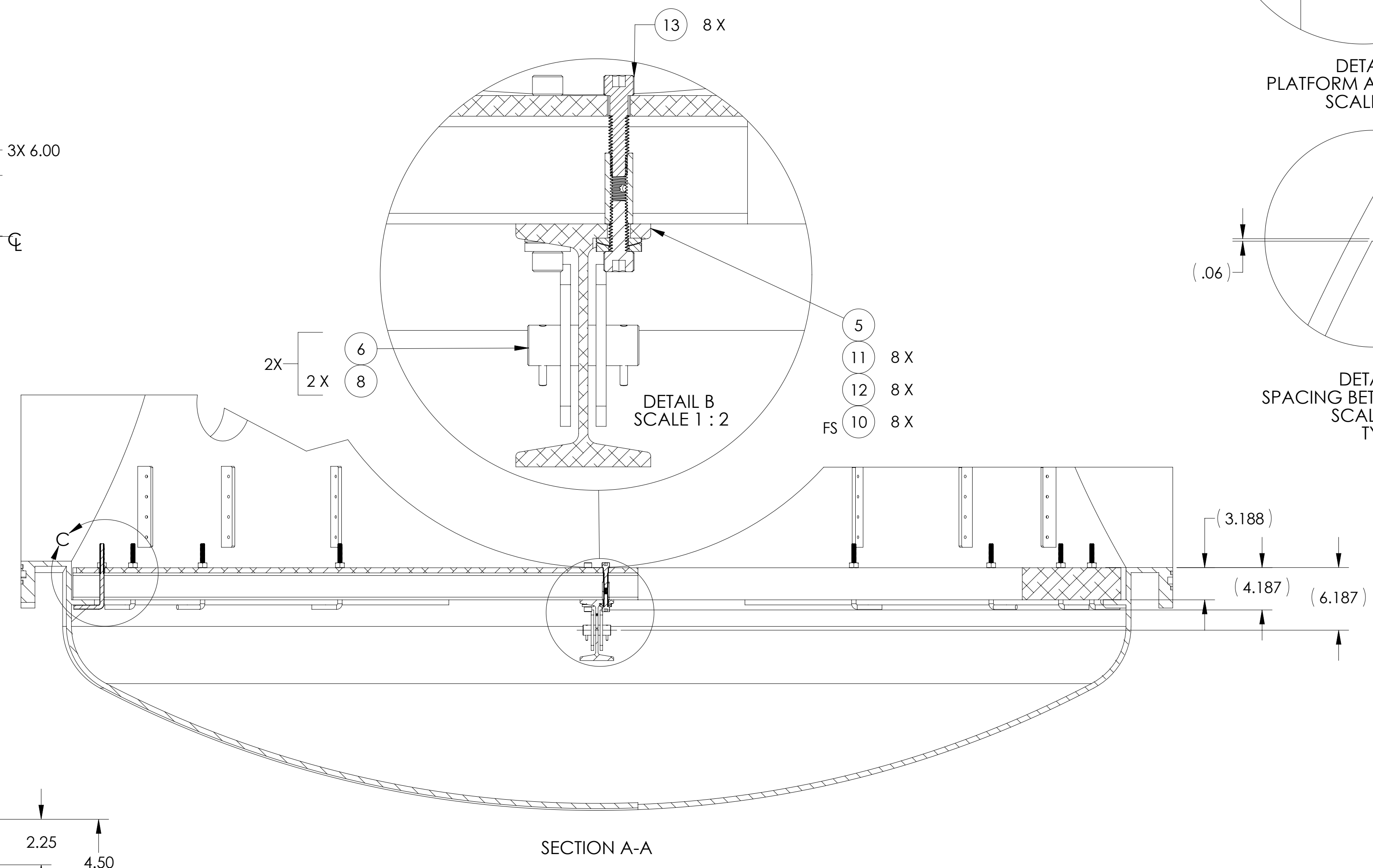
DETAIL A  
PLATFORM ATTACHMENT  
SCALE 1 : 2



DETAIL D  
SPACING BETWEEN PLANKS  
SCALE 1 : 2  
TYP.



ITEM 10 DETAIL  
SCALE 2 : 1  
MATERIAL: MAKE FROM MC.MASTER-CARR  
PART NO. 90268A125  
OR EQ.



SECTION A-A

NOTES AND TOLERANCES: (UNLESS OTHERWISE SPECIFIED)

- INTERPRET DRAWING PER ASME Y14.5-1994
- REMOVE ALL SHARP EDGES, .005-.015, FOR MACHINED PARTS. ROUND ALL EDGES APPROXIMATELY R.02 FOR SHEET METAL PARTS.
- DO NOT SCALE FROM DRAWING.
- ALL MACHINING FLUIDS MUST BE FULLY SYNTHETIC, FULLY WATER SOLUBLE AND FREE OF SULFUR, SILICONE, AND CHLORINE.

TOLERANCES:  
XX = .01  
XXX = .005

ANGULAR: 2°

MATERIAL: N/A

FINISH: N/A μinch

SYSTEM: ADVANCED LIGO

SUB-SYSTEM: SUS

NEXT ASSY: MULTIPLE

ITEM NO.	PART NUMBER	DESCRIPTION	MATERIAL	QTY.
13	C-1332-A	SCREW, SHCV, 1/2-13 X 2.0 LG., Ag PLATED	Ag-P 18-8 SSSL	8
12	C-1320-A	SCREW, SHCV, 1/2-13 X 1.25 LG., Ag PLATED	Ag-P 18-8 SSSL	8
11	91944A470	WASHER, SPHERICAL, 1/2 I.D., SELF-ALIGNING	18-8 SSSL	8
10	D96111SP7	COUPLING NUT, 1/2-13 X 1.75 LG.	18-8 SSSL OR McMASTER-CARR P/N:90268A125	8
9	N-5013-A	NUT, HEX, 1/2-13, Ag PLATED	Ag-P 18-8 SSSL	16
8	90145A514	PIN, DOWEL, 3/16 DIA. X 1.50 LG.	18-18 SSSL	4
7	V049M147 3	L-HOOK, 1/2-13 X 6.50 LG. (CUSTOM)	304 SSSL	16
6	D96111SP6	PIN, 1" DIA. X 2.75 LG.	6061-T6 (SS)	2
5	D96111SP5	I-BEAM, SUPPORT, BSC FLOORING	6061-T6 (SS)	1
4	D96111SP4	PLANK, BSC FLOORING ASSY, P4	6061-T6, C12 X 10.37	2
3	D96111SP3	PLANK, BSC FLOORING ASSY, P3	6061-T6, C12 X 10.37	2
2	D96111SP2	PLANK, BSC FLOORING ASSY, P2	6061-T6, C12 X 10.37	2
1	D96111SP1	PLANK, BSC FLOORING ASSY, P1	6061-T6, C12 X 10.37	2

DESIGNER	DRAWN	CHECKER	APPROVAL	DATE	SIZE	DWG. NO.	REV.
IPV	IPV	IPV	IPV	03 MARCH 1994	E	D961115	v3

SCALE: 1:8 PROJECTION: 1 SHEET 1 OF 1