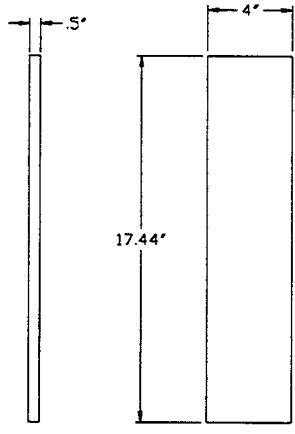
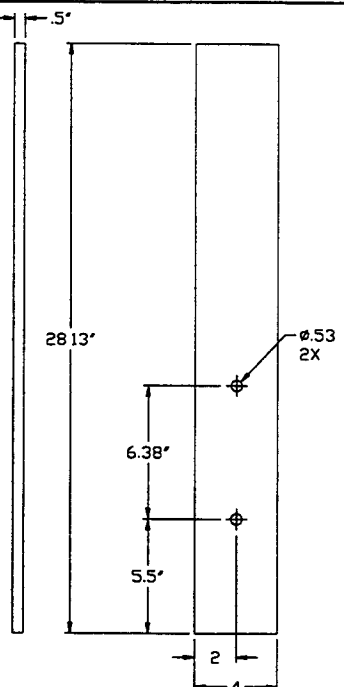


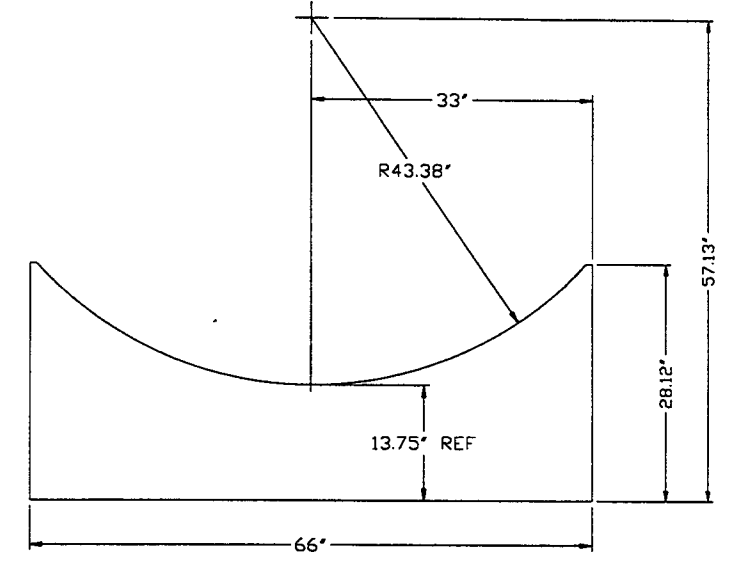
ITEM 13 - DETAIL 3
MAT'L: A36 CS
QTY: 1



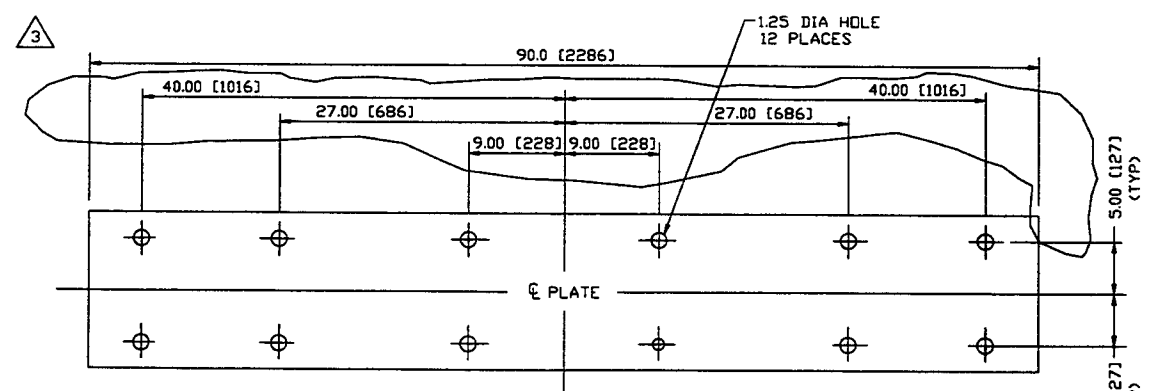
ITEM 1B - DETAIL 2
MAT'L: A36 CS
QTY: 2



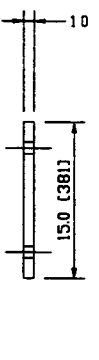
ITEM 1A - DETAIL 1
MAT'L: A36 CS
QTY: 2



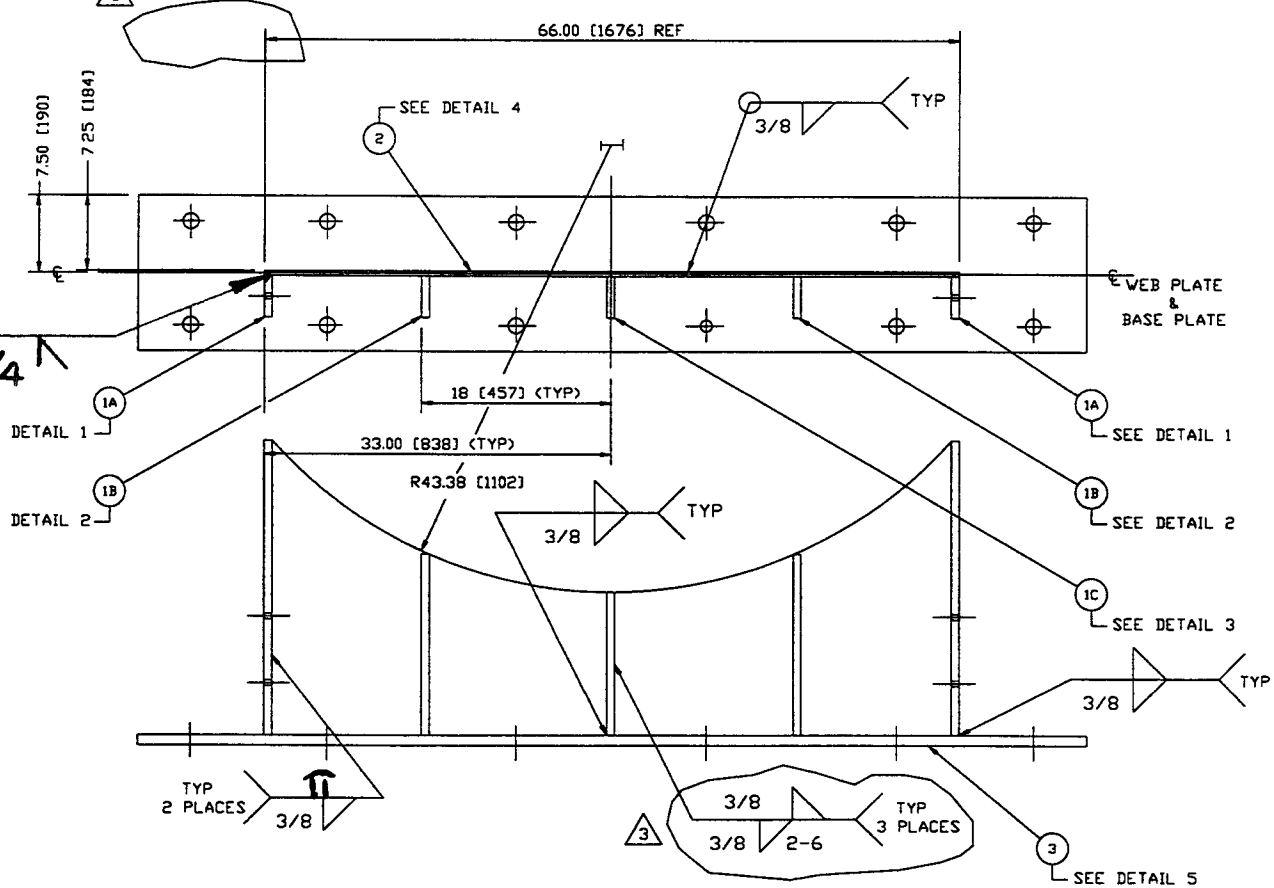
ITEM 2-DETAIL 4
MAT'L: A36 STL.



ITEM 3-DETAIL 5
MAT'L: A36 CS
SCALE: 4X
QTY: 2



TYP 1/4



WELDED BASE PLATE SUB-ASSY.
SCALE: 4X
QTY: 1

NOTE: FABRICATION & PAINTING TO BE IN ACCORDANCE WITH PSI SPEC V049-2-139

2-REQ'D PER HAM

PROPRIETARY AND CONFIDENTIAL
THIS DOCUMENT CONTAINS PROPRIETARY INFORMATION BELONGING TO PROCESS SYSTEMS INTERNATIONAL, INC. OR ITS AFFILIATED COMPANIES AND SHALL BE USED ONLY FOR THE PURPOSE FOR WHICH IT WAS SUPPLIED. IT SHALL NOT BE COPIED, REPRODUCED OR OTHERWISE USED FOR ANY OTHER PURPOSE WITHOUT THE WRITTEN CONSENT OF PROCESS SYSTEMS INTERNATIONAL, INC. AND SHALL BE RETURNED UPON REQUEST.

DWG. NO.	DESCRIPTION	DWG. NO.	DESCRIPTION
V049-4-054	HAM FLANGE & ANNULUS TUBING ASSY		
V049-4-002	HAM ASSY		

UNLESS OTHERWISE SPECIFIED DIMENSIONS ARE IN INCHES
TOLERANCES:
FRACTIONAL ± .1
ANGULAR ± .5°
HOLE ± .015
THREE PLACE DECIMAL ± .005
FURNISHED SURFACE FINISH SHALL BE AS SHOWN
BREAK CORNERS BY REMOVE ALL BURRS

DO NOT SCALE THIS DRAWING
USED ON:
NEXT ASSY: V049-4-054

REV	DESCRIPTION	CHKD	DRWN	DATE	DED
3	REVISED PER RFC #V049-022 / ISSUE FOR FABRICATION	BAR	BAR	11/22/96	0366
2	REVISE/ 1.50 DIA HOLE CHANGE TO 1.25 DIA	PEF	DRW	10/1/96	0242
1	ISSUED FOR FABRICATION / ADDED .53 HOLES	RB	PEF	8/7/96	0200
0	ISSUED FOR FDR			4/10/96	0118
PL	PRELIMINARY			03/23/96	

PROCESS SYSTEMS INTERNATIONAL, INC.
20 WALKUP DR. WESTBOROUGH, MASSACHUSETTS 01581 USA

HORIZONTAL ACCESS MODULE (HAM)
VESSEL SUPPORT
LIGO VACUUM EQUIPMENT

CAD FILE: V0494052
SIZE: D
DWG NO: V049-4-052
REV: 3

SCALE: NONE
SHEET: 1 OF 1

LIGO-D961121-03-V